

Зип Общепит

vsezip.ru

+7(812)987-08-81



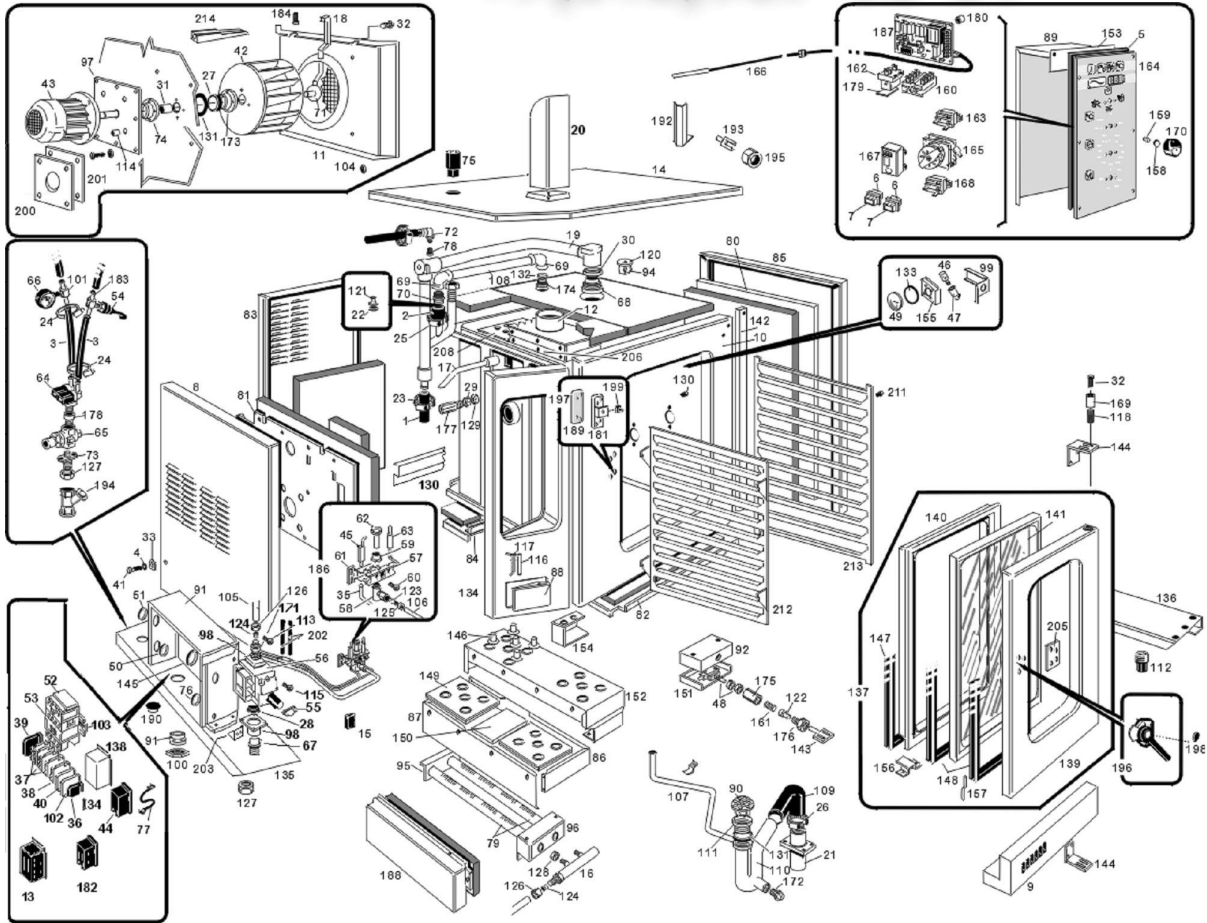
**FCV101-CSA**

**Edition 20101123-**

Зип Ощепит

vsezip.ru

+7(812)987-08-81



Pos	Code	Description	Info
001	111AA05	RUBBER HOSE Ø30 Ø20	01/03/2000-
002	131AA23	RUBBER HOSE Ø35 Ø28	01/03/2000-
003	131AA12	RUBBER HOSE Ø17 Ø10 X H <sup>2</sup> O	01/03/2000-
004	3188650	WASHER	23/11/2010-
005	137AA15	GASKET	01/03/2000-
006	170WR01	JUNCTION BOX	01/03/2000-
007	171WR01	JUNCTION BOX	01/03/2000-
008	35C3692	LH PANEL ASS.Y	01/03/2000-
009	30W3281	TRAY ASS.Y	01/03/2000-
010	30D5680	COOKING CHAMBER	01/03/2000-
011	35Y0580	CHAMBER AIR GUIDE	01/03/2000-
012	30D2673	FLUE ASS. Y	01/03/2000-
013	32V1990	TRASFORMER 20 VA	01/03/2000-
014	30G2900	OVEN COVER ASS. Y	01/03/2000-
015	32D1430	CONNECTOR	01/03/2000-
016	30Z7590	GAS MANIFOLD	01/03/2000-
017	30Z2050	PIPE AISI304 Ø12- 159X77	01/03/2000-
018	30Z2060	END PIPE, COMPLETE	01/03/2000-
019	30Z7691	STEAM DRAIN PIPE ASS.Y	01/03/2000-
020	35E0870	PIPE	01/03/2000-
021	33Q6100	LOWER DRAIN PIPE	01/03/2000-
022	36G6750	RING NUT	01/03/2000-
023	3140300	HOSE CLAMP	01/03/2000-
024	3140230	12/20 PIPE CLAMP	01/03/2000-
025	3140300	HOSE CLAMP	01/03/2000-
026	3140380	HOSE CLAMP	01/03/2000-
027	3150900	GASKET	01/03/2000-
028	3152300	O RING GASKET	01/03/2000-
029	3151441	WASHER Ø22 Ø16.2=1.5	01/03/2000-
030	3151450	CU WASHER	01/03/2000-
031	3151490	BEARING	01/03/2000-
032	3190020	SCREW M6X10	01/03/2000-
033	3170110	ACCOMODATION Ø6	01/03/2000-
034	3200110	FUSE 5X20 0,5A-250V	01/03/2000-
034	3200140	FUSE	01/03/2000-
034	3200300	FUSE 5X20 0,032A-250V	01/03/2000-
034	3200310	FUSE 5X20	01/03/2000-
035	32A2760	CABLE "HF" 1200MM	01/03/2000-
036	32D0870	TERMINAL CLAMP	01/03/2000-
037	32D0950	LIVE TERMINAL	01/03/2000-
038	32D0970	GROUND TERMINAL	01/03/2000-
039	32D0960	TERMINAL END COVER	01/03/2000-
040	32D0641	FUSE TERMINAL BOARD	01/03/2000-
041	31X0170	PIN FT Ø6	01/03/2000-
042	32M2561	FAN Ø335	01/03/2000-
043	32M3110	MOTOR 0.37KW T.71-B5	01/03/2000-
043	32M5640	MOTOR	01/03/2000-
044	32T0280	SPARK IGNITION DEVICE	01/03/2000-
046	32W0210	OVEN LAMP 25 W	01/03/2000-
046	32W2090	OVE LAMP 25 W 120V	01/03/2000-
047	32W2561	LAMP HOLDER	01/03/2000-

Pos	Code	Description	Info
048	32W3340	MICROSWITCH	01/03/2000-
049	6300645	GLASS + WASHER	04/08/2004-
050	32X0120	GROMMET Ø 21	01/03/2000-
051	32X0130	GROMMET Ø29-Ø37	01/03/2000-
052	32V1080	SWITCH RELAY 1-2.9 A	01/03/2000-
052	32V2490	SWITCH RELAY 1.6- 5 A	01/03/2000-
053	32V1060	RELAY 208-240V-50HZ	01/03/2000-
053	32V1580	RELAY 120V-50HZ	01/03/2000-
054	3041830	PRESSURESTAT	30/09/2004-
055	33A0020	COMPL. VALVE	01/03/2000-
056	33A1470	"GASVALVE 1/2""	01/03/2000-
057	33A0950	REAR BRACKET	01/03/2000-
058	33A0690	PILOT BURNER BODY Ø0,40	01/03/2000-
059	33A0970	RING NUT	01/03/2000-
060	33A0980	SCREW 3/16W. X18TE	01/03/2000-
061	33A1000	FRONT BRACKET	01/03/2000-
062	33A1081	THREE-FLAME BURNER	24/04/2008-
063	33A1410	INTERRUPTED THERMOC. M9X1X1000	01/03/2000-
064	33D2410	"SOLENOID VALVE 3/4"" 1IN-2OUT"	01/03/2000-
064	33D2420	SOLENOID VALVE 60HZ- 110/127V	01/03/2000-
065	33D1650	"PRES. REDUC. VAL. F-F Ø 1/2""	01/03/2000-
066	33D1680	MANOMETRE 0-40BAR M1/8	01/03/2000-
067	33Q4010	GAS ENTRY CONNECTOR	01/03/2000-
068	33Q5410	VALVE CONNECTOR	01/03/2000-
069	33Q5420	"ELBOW FF 3/4""	01/03/2000-
070	33Q5450	DEPRES. CONNECTOR	01/03/2000-
071	30Z0480	WATER DIFFUSER	01/03/2000-
072	33Q5592	NOZZLE SUPPORT. ELBOW	01/03/2000-
073	33Q5641	ENTRY CONNECTOR H2O	01/03/2000-
074	33Q5690	BUSHING SUPPORT	01/03/2000-
075	33Q5980	SOUND REDUC. CONNECTOR	01/03/2000-
076	32X0200	GROMMET Ø7.5-Ø11.5	01/03/2000-
077	32A2800	CABLE "HF" 150MM	01/03/2000-
078	33T3720	NOZZLE	01/03/2000-
079	34A1690	BURNER 9 KW	01/03/2000-
080	35C2670	INSULATION PANEL COVER	01/03/2000-
081	35B4760	INS. PANEL COVERING	01/03/2000-
082	35B4771	INSULATION PANEL COVER	01/03/2000-
083	35B4782	BACK PANEL	01/03/2000-
084	35B4790	"L" BRACKET	01/03/2000-
085	35C2521	RH PANEL	01/03/2000-
086	35D1810	FRONT ROOM	01/03/2000-
087	35D1820	BACK ROOM	01/03/2000-
088	35G3180	SLOT COVER	01/03/2000-
089	3AQ0101	COMPON. PROTECTION	01/03/2000-
090	3033400	FILTER	01/03/2000-
091	35Q8201	PANEL BOARD	01/03/2000-
092	35Q2380	END RUN PROTECTION	01/03/2000-
094	35S5970	GUIDE CONTERWEIGHT	01/03/2000-
095	35S6010	BACK BURNER SUPPORT	01/03/2000-
096	35S6021	FRONT BURNER	01/03/2000-

Pos	Code	Description	Info
097	35S6082	SUPPORT FLAT BRACKET	01/03/2000-
098	33Q3880	TEE	01/03/2000-
099	35V8081	LAMPHOLDER SUPPORT	01/03/2000-
100	32D0200	LOCK NUT PG16	01/03/2000-
101	33Q5921	CONNECTOR	01/03/2000-
102	32D0651	TERMINAL	01/03/2000-
103	35V5810	OMEGA BRACKET	01/03/2000-
104	3120390	WASHER	01/03/2000-
105	35X0411	PIPE	01/03/2000-
106	35X4590	PILOT BURNER PIPE	01/03/2000-
107	35X0540	DRAIN PIPE	01/03/2000-
108	35X0550	PIPE	01/03/2000-
109	35Z2620	PIPE	01/03/2000-
110	36A3390	DRAIN TRAP	01/03/2000-
111	36A3400	DRAIN	01/03/2000-
112	36D5732	FOOT	13/03/2009-
113	33A1510	"TEE""THERMOCOUPLE""	01/03/2000-
114	3120080	STEEL WASHER	01/03/2000-
115	33A1520	"PILOT BURNER" TEE	01/03/2000-
116	36G7820	PIN	01/03/2000-
117	36G7960	TORSION SPRING	01/03/2000-
118	36G5320	SPRING	01/03/2000-
120	36G5380	COUNTERWEIGHT	01/03/2000-
121	36G6740	COUNTERWEIGHT	01/03/2000-
122	36G6040	END RUN PIN	01/03/2000-
123	36Q0020	BICONE Ø 6 X 6.5	01/03/2000-
124	36Q0030	BICONE Ø12X8	01/03/2000-
125	36Q0060	CLOSING BICONE NUT Ø 6	01/03/2000-
126	36Q0050	BICONE NUT Ø 12	01/03/2000-
127	36Q1100	LOCK NUT 3/4"	01/03/2000-
128	36Q1110	LOCK NUT 3/8"	01/03/2000-
129	36Q1171	LOCKNUT M16X1.5	01/03/2000-
130	35R6220	PROTECTION	01/03/2000-
131	37Q3011	GASKET	01/03/2000-
132	3151730	GASKET	01/03/2000-
133	37Q7840	GASKET	01/03/2000-
134	30A3910	CONTROL PANEL	01/03/2000-
135	35V5212	LH FOOT HOLDER	01/03/2000-
136	30T6590	SMALL END SUPPORT	01/03/2000-
137	6300417	DOOR ASSEMBLY	01/03/2000-
138	35Q1730	EL. IGNITION PROTECTION	01/03/2000-
139	30G0401	DOOR ASS. Y	01/03/2000-
140	35G0360	OVEN COUNTER DOOR	01/03/2000-
141	37M0250	CHAMBER GLASS ASS. Y	01/03/2000-
142	35V4420	PLATE	01/03/2000-
143	36D8360	MICROSWITCH ROD	01/03/2000-
144	36M4122	DOOR HINGE	01/03/2000-
145	32X0140	GROMMET Ø13,5-Ø25	01/03/2000-
146	33Q6230	BUSHING	01/03/2000-
147	37Q0972	DOOR GASKET	01/03/2000-
148	37Q2992	GASKET	01/03/2000-

Pos	Code	Description	Info
149	35D1900	COMB. CHAMBER SCREEN	01/03/2000-
150	35D1970	INSULATING PANEL	01/03/2000-
151	35Q2360	SUPP. END RUN PROTECTION	01/03/2000-
152	35T0710	COMB. CHAMBER SUPPORT ASS.Y	01/03/2000-
153	35V0790	FLAT BRACKET	01/03/2000-
154	35V3290	SPILLAGE TRAY SUPPORT	01/03/2000-
155	35V8072	LAMP HOLDER BOX	01/03/2000-
156	35V9030	CHAMBER GLASS SUPP.	01/03/2000-
157	35X2900	DOOR DRAIN PIPE	01/03/2000-
158	3150790	THERMOSTAT PROTECT.	01/03/2000-
159	3170290	KNOB SPRING	01/03/2000-
160	32W2941	COMMUTATOR	01/03/2000-
161	36G7140	SPRING	01/03/2000-
162	32V1000	SAFETY THERMOSTAT	01/03/2000-
163	32Z5820	THERMOSTAT 50-250°C	01/03/2000-
164	37N0370	SILK-SCREEN PANEL BOARD	01/03/2000-
165	32Y0030	TIMER 0-120' 220/240V- 50HZ	01/03/2000-
165	32Y0040	TIMER 0-120 60HZ 120V	01/03/2000-
166	32Z6191	TEMP.PROBE PT100	01/03/2000-
167	32Y0060	BUZZER 50" 220V	01/03/2000-
167	32Y0070	BUZZER 120V	01/03/2000-
168	32Z5880	THERMOSTAT 30-90°C	01/03/2000-
169	36D7060	PIN	01/03/2000-
170	36M4560	ELECTRIC CONTROL KNOB	01/03/2000-
171	33Q5880	CONNECT. R1/2-M20X1.5	01/03/2000-
172	33Q3210	PLUG	01/03/2000-
173	33Q5381	RING SUPPORT	01/03/2000-
174	33Q5390	"RING 3/4""	01/03/2000-
175	33Q4120	CONNECT. M16X1.1M10	01/03/2000-
176	33Q5610	RING M16X1.5	01/03/2000-
177	33Q5630	CONNECT MF 3/8"-M16	01/03/2000-
178	33Q5650	SOCKET F3/4 M1/2 Ø30X25	01/03/2000-
179	35S6361	L" SHAPED BAR	01/03/2000-
180	36C0970	SPACER	01/03/2000-
181	36M0820	LOCK HOUSING	01/03/2000-
182	32V3540	TRASFORMER 3.2 VA	01/03/2000-
183	33Q5910	CONNECTOR Ø 0.6	01/03/2000-
184	3190040	SCREW M6X20	01/03/2000-
186	6300427	PILOT BURNER ASS. Y	01/03/2000-
187	32V3020	PCB 208-240V	01/03/2000-
187	32V3030	PCB 120 V	01/03/2000-
188	35B4990	INSULATION PANEL COVER	01/03/2000-
189	36M1570	LOCK SPACER	01/03/2000-
190	36Q0190	Cap Ø20	01/03/2000-
191	32D0190	FAIRLEAD Ø 6 Ø 16	01/03/2000-
192	35Q6360	THERMORES. PROTECTION	01/03/2000-
193	36D8492	FEELER SUPPORT	01/03/2000-
194	33Q6091	H2O FILTER 3/4"	01/03/2000-
195	36Q0550	LOCK NUT M12X1.5	01/03/2000-
196	36M6380	OVEN DOOR HANDLE	01/03/2000-
197	6300420	LOCK ASS. Y	01/03/2000-

Pos	Code	Description	Info
198	37M4040	RATING INSERT	01/03/2000-
199	3FL0197	PLASTIC INSERT LOCK	01/03/2000-
200	3152020	GASKET	01/03/2000-
201	35S2920	FLAT BRACKET	01/03/2000-
202	32A2580	CABLE 1200 MM	01/03/2000-
203	35R5350	SUPPORT SOLENOID VALVE	01/03/2000-
205	35V9050	HANDLE SHAPED BAR	01/03/2000-
206	35D4872	FLUE PANEL	01/03/2000-
207	32Q5120	EL. CABLES FCV 120 V	01/03/2000-
207	32Q5160	EL. CABLES FCV 208-240	01/03/2000-
208	37Q3880	V PIPE GASKET	01/03/2000-
209	36Q1550	CAP Ø11	01/03/2000-
211	36C3071	M6 TRAY HOLDER PIN	18/11/2004-
212	35Y1170	LEFT TRAYS GUIDE	01/03/2000-
213	30T3790	RH FRAME ASS. Y	01/03/2000-
214	35Y0570	WATER ENTRY PROFILE	01/03/2000-