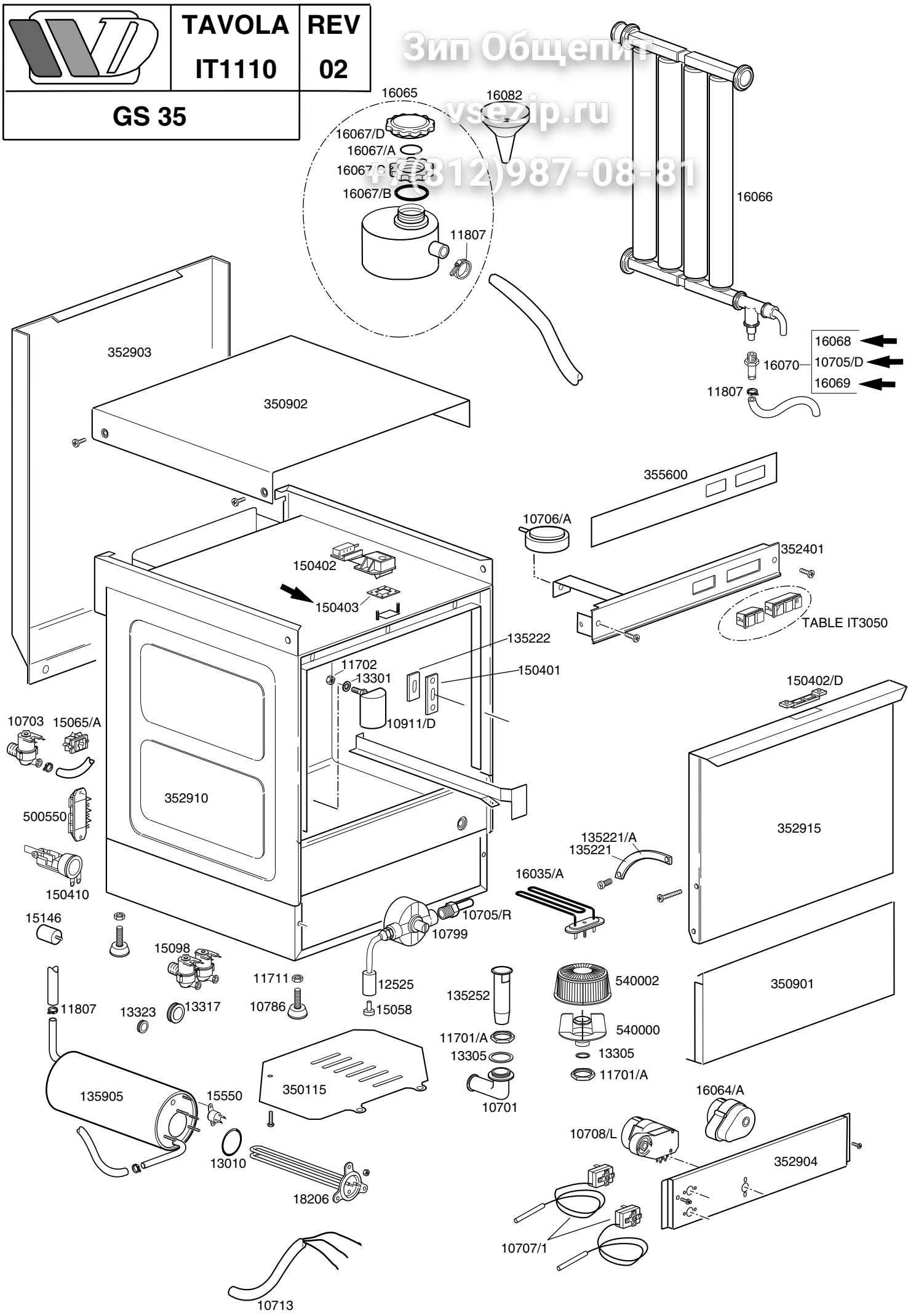


Зип Общий
vsezip.ru
(812)987-08-81



LAVASTOVIGLIE GS 35

Зип Общепит

TAVOLA

IT1110

vsezip.ru

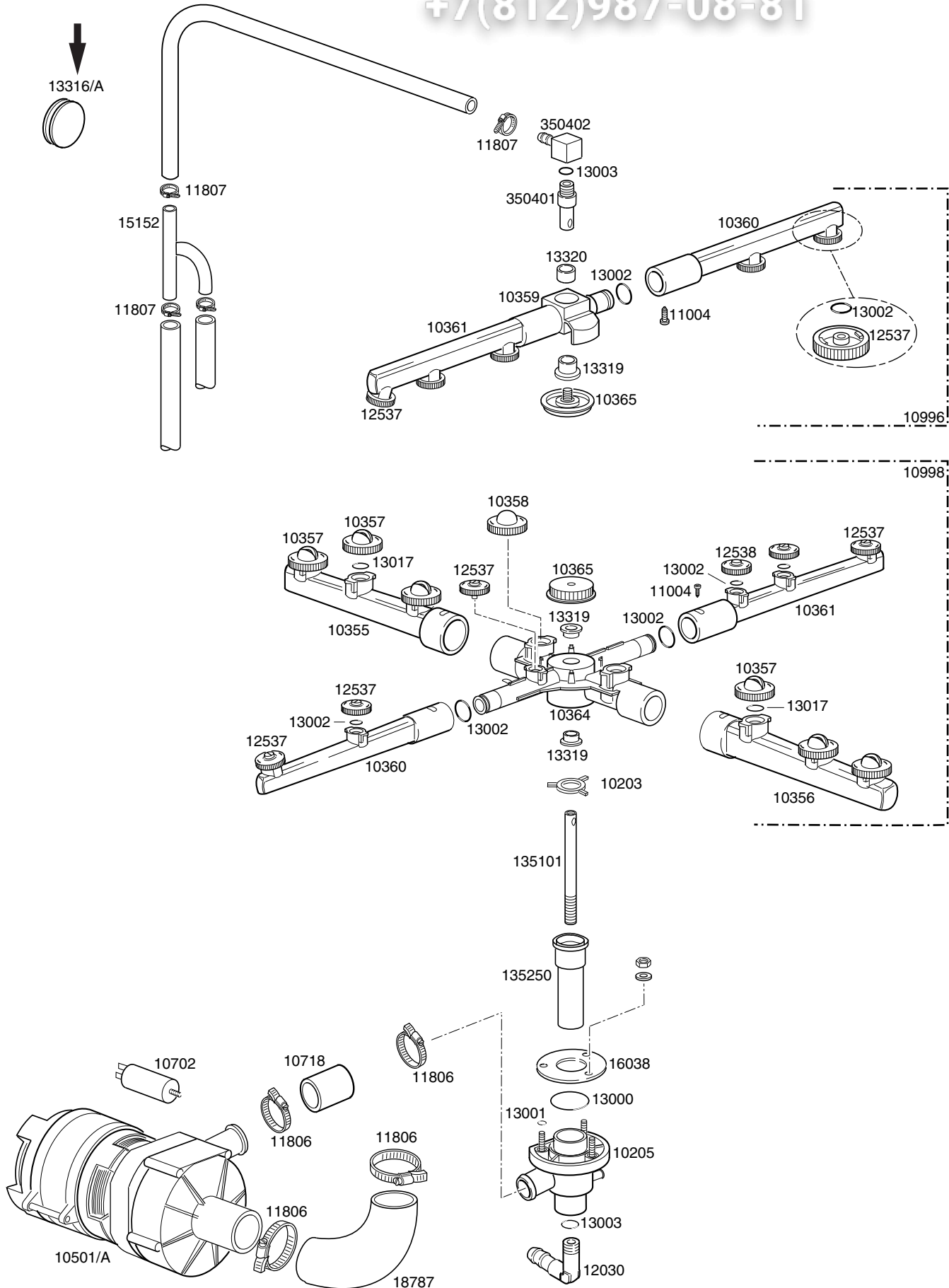
| CODE | DESCRIPTION | CODE | DESCRIPTION |
|----------|---|----------|------------------------------|
| 10701 | Gomito scarico | 150402/D | Blocchetto cricco porta |
| 10703 | Elettrovalvola singola | 16068 | Valvola non ritorno ← |
| 10713 | Cavo alimentazione 3x2,5x2500 | 16069 | Valvola siliconica piccola ← |
| 10786 | Piedino M10x25 d.40 nero | 150403 | Guarnizione ← |
| 10799 | Dosatore brillantante | 10705/D | Valvola siliconica ← |
| 11702 | Dado M8 inox | | |
| 11711 | Dado M10 zincato | | |
| 11807 | Fascetta inox 12-22 | | |
| 12525 | Contropeso per filtrino dosatore brillantante | | |
| 13010 | Guarnizione OR resistenza | | |
| 13301 | Guarnizione amianto d.14x8x1,5 | | |
| 13305 | Guarnizione gomito scarico | | |
| 13317 | Passacavo in gomma d.40 | | |
| 13323 | Passacavo in gomma d.13 | | |
| 15058 | Filtrino aspirazione brillantante | | |
| 15098 | Elettrovalvola doppia | | |
| 15146 | Filtro antidisturbo F1 | | |
| 15550 | Termostato di sicurezza a contatto | | |
| 16066 | Decalcificatore 4 elementi | | |
| 16067 | Contenitore sale | | |
| 16070 | Valvola non ritorno | | |
| 16082 | Imbuto | | |
| 18206 | Resistenza boiler 2400W | | |
| 135221 | Bretella porta dx | | |
| 135222 | Battuta cerniera porta | | |
| 135252 | Troppopieno | | |
| 135905 | Boiler completo | | |
| 150401 | Guida asta curva | | |
| 150402 | Cricco completo | | |
| 150410 | Morsettiera fissacavo | | |
| 350115 | Fondo protezione | | |
| 350901 | Pannello sottoporta | | |
| 350902 | Coperchio | | |
| 352903 | Schienale | | |
| 352401 | Supporto comandi | | |
| 352904 | Portacomponenti | | |
| 352910 | Carrozzeria completa | | |
| 352915 | Porta completa | | |
| 355600 | Mostrina serigrafata | | |
| 500550 | Morsettiera 3 poli FV110 | | |
| 540000 | Corpo per filtro portagomma/filetto | | |
| 540002 | Filtro per corpo | | |
| 10705/R | Raccordo per tubo d.8 | | |
| 10706/A | Pressostato 55-30 | | |
| 10707/1 | Termostato 0-90° TR2 senza albero | | |
| 10708/L | Timer 120" aggancio rapido | | |
| 10911/D | Assieme gabbia d'aria | | |
| 11701/A | Dado esagonale ottone 36x5 | | |
| 15065/A | Fissacavo con viti | | |
| 16035/A | Resistenza vasca 1850W | | |
| 16064/A | Timer depurazione 18' | | |
| 16067/A | Guarnizione OR per tappo boccia | | |
| 16067/B | Guarnizione boccia sale | | |
| 16067/C | Ghiera boccia sale | | |
| 16067/D | Tappo boccia sale | | |
| 135221/A | Bretella porta sx | | |

| | | |
|-----------------------------|---------------|------------|
| | TAVOLA | REV |
| | IT1130 | 01 |
| GS 35 | | |
| Dalla matricola Nr°00012244 | | |

Зип Общепит

vsezip.ru

+7(812)987-08-81



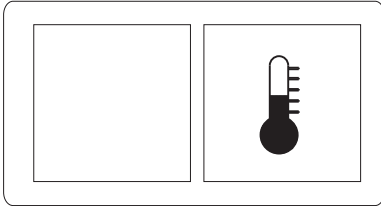
| | | |
|--|-----------------------|-----------|
|  | TAVOLA IT3050 | REV 00 |
| | TASTI SERIE GS35-GS37 | |

Зип Общепит

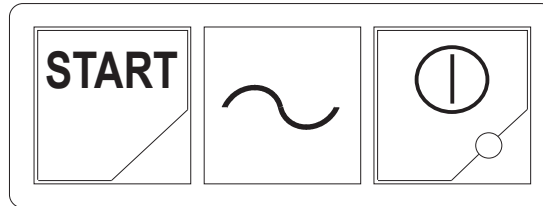
vsezip.ru

+7(812)987-08-81

SERIE GS35-GS37 DI SERIE

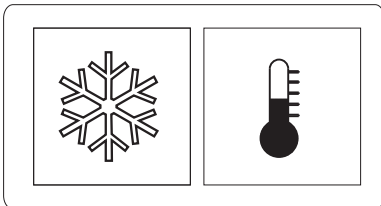


15899/A

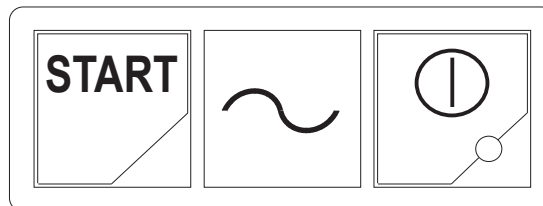


15888

SERIE GS35-GS37 RISCIACQUO SUPPLEMENTARE FREDDO

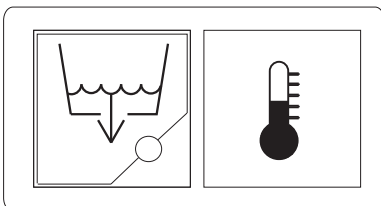


15899/B

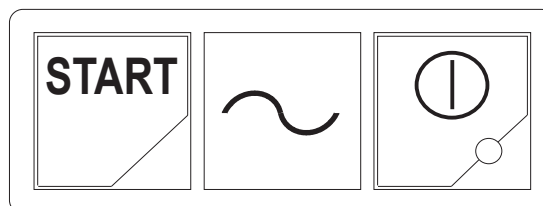


15888

SERIE GS35-GS37 POMPA DI SCARICO

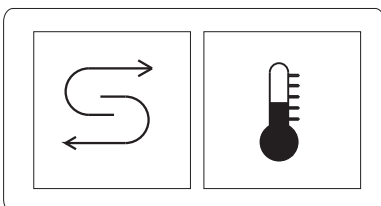


15899/C



15888

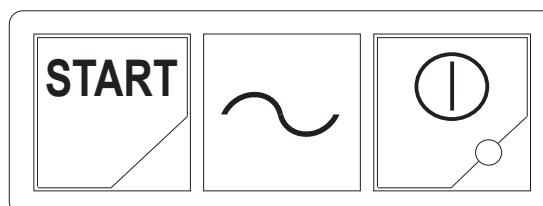
SERIE GS35-GS37 DEPURAZIONE



15899



10711/B



15891



TAVOLA
IT3051

REV
00

TASTI SERIE GS35

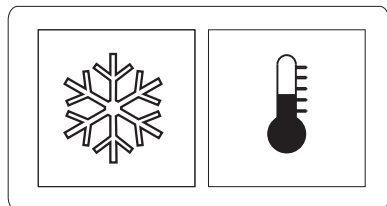
Dalla matricola 99019614

Зип Общепит

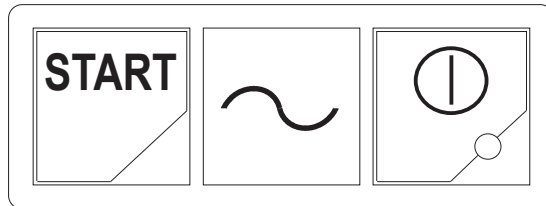
vsezip.ru

+7(812)987-08-81

SERIE GS35 CALDO FREDDO COMBINATO



15899/D



15888

