

Зип Общепит

vsezip.ru

+7(812)987-08-81

HOOD TYPE MACHINE

INSULATED HOOD
ELECTRONICAL CONTROL

TYPE: 110E

Accessories

BREAK TANK

BOOSTER PUMP

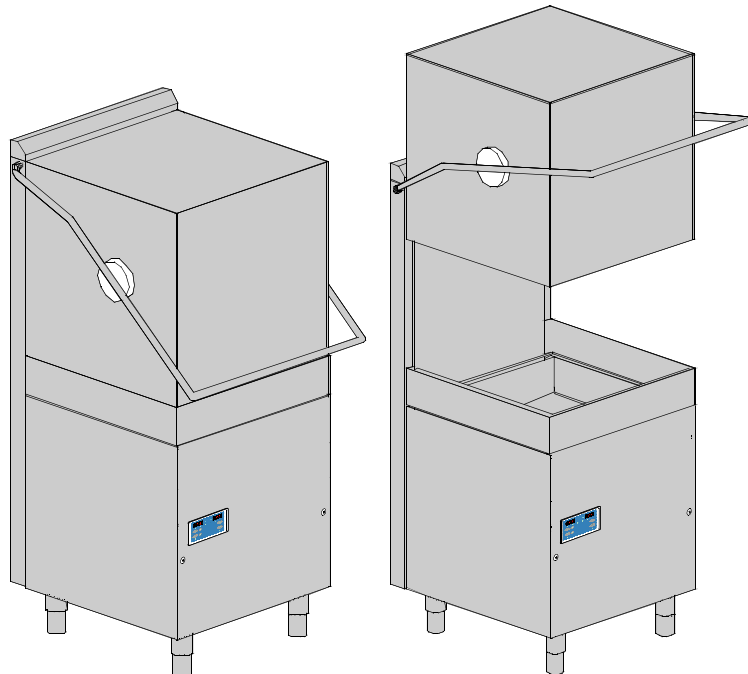
DVGW

WATER SOFTNER

DETERGENT DISPENSER

DRAIN PUMP

Spare parts manual



INFORMAZIONI GENERALI

Questo catalogo serve per richiedere con esattezza le parti di ricambio

Nelle ordinazioni indicare:

1) il numero dei codici dei particolari seguito dalla descrizione e la quantità desiderata;

2) Il codice alfa-numerico presente nella seconda colonna della tabella ;

I disegni delle parti di ricambio sono solo indicativi e non rappresentano il pezzo in oggetto.

I dati contenuti in questo catalogo sono indicativi e possono essere soggetti a modifiche senza impegno di preavviso.

ALLGEMEINE INFORMATIONEN

Dieser Ersatzteilkatalog dient zur genauen Angabe der Teile bei Ersatzteilbestellungen.

Bei Ersatzbestellung ist folgendes anzugeben:

1) Die Bestellnummer der Ersatzteile mit der entsprechenden Beschreibung genaue Menge;

2) Der alpha-numerischer Code auf der zweiten Reihe in dein Schuld;

Die Zeichnungen der Ersatzteile sind nur als Hinweise gedacht und stellen nicht das betroffene Teil dar.

Bei den im Katalog angeführten Daten handelt es sich um Anhaltsdaten, die jederzeit, ohne Vorankündigung, geändert werden können.

GENERAL INFORMATION

The present spare parts order exactly the right spare parts

When ordering specify:

1) the part's code number followed by its description and quantity needed;

2) The alpha-numeric code is in the second column in the chart;

Spare parts drawings are general and do not represent the part.

The contents of this catalogue are general and can undergo changes without prior notice.

INFORMACIONES GENERALES

El presente catálogo sirve para pedir con exactitud las partes de repuesto

En los pedidos se debe indicar:

1) el número de código de la parte y a continuación la descripción cantidad deseada;

2) El código alfanumerico presente en la segnada columna de la tabla;

Los diseños de las partes de recambio son solo indicativos y no representan la pieza en cuestión.

Los datos contenidos en el presente catálogo son indicativos y pueden modificarse sin aviso previo.

INFORMATIONS GENERALES

Ce catalogue permet de commander correctement les pièces détachées

Les commandes doivent être passées en indiquant:

1) le numero de code des pièces détachées suivi de leur description quantité désirée;

2) le code alphanumérique dans la deuxième colonne du tableau;

Les plans des pièces détachées sont fournis seulement à titre indicatif et ne représentent pas la pièce concernée.

Les données de ce catalogue sont citées seulement à titre indicatif et peuvent être l'objet de modifications sans avis préalable.

ESEMPIO EXAMPLE EXEMPLE BEISPIEL

| Rif. | Codici |
|--------------------|---------|
| MODULE:Particolari | |
| 10505 | 540903 |
| 10510 | 540908 |
| 10515 | 15065/A |
| 10520 | 540086 |
| 10525 | 540028 |



Note

Tutte le informazioni riportate si intendono aggiornate alla data di stampa. Il Produttore si riserva il diritto di apportare qualsiasi modifica richiesta dallo sviluppo evolutivo dei suddetti prodotti.

Per la sicurezza, la garanzia, l'affidabilità ed il valore della lavastoviglie usa solo ricambi originali. **Per alcuni codici, sono richieste quantità minime d'ordine.**



Attenzione

Questo libretto è parte integrante della lavastoviglie e, in caso di passaggio di proprietà, deve essere consegnato al nuovo acquirente.



Remarque

Toutes les informations contenues dans ce manuel s'entendent mises à jour à la date d'impression. En raison du développement constant de ses produits, usine se réserve le droit d'apporter à tout instant les modifications qu'elle jugera utiles.

Pour la sécurité, la garantie, la fiabilité et la valeur de votre lavevaisselles n'utilisez que des pièces de rechange d'origine. **Pour quelque référence on demande un minimum de pièces par commande**



Attention

Ce manuel doit être considéré comme partie intégrante de la lavevaisselles, en cas de transfert de propriété, doit toujours être remis au nouveau propriétaire.



Note

The information contained herein is valid at the time of going to print. The Company reserves the right to make any changes required by the future development of the above-mentioned products.

For your safety, as well as to preserve the warranty reliability and worth of your dishwashers, use original spare parts only. **For some codes a minimum quantity for order is required.**



Warning

This manual forms an integral part of the dishwashers and - if a transfer of title occurs - must always be handed over to the new owner.



Hinweis

Die Der Hersteller behält sich das Recht vor, jegliche, durch eine Weiterentwicklung der genannten Produkte bedingte Änderungen vornehmen zu können.


Verwenden Sie für Ihre Sicherheit, die Garantie, die Zuverlässigkeit und den Wert Ihrer machine originale Ersatzteile. **Für bestimmte Code nummer werden mindesten bestellungen verlangt.**



Achtung

Diese Betriebsanleitung ist Bestandteil des machine und muss bei seinem Weiterverkauf dem neuen Besitzer ausgehändigt werden.

vsezip.ru
+7(812)987-08-81




Code DW 999XXYYYY **CL/Part**

Model DESCRIPTION

S/N DW A 1015770 Type

400V 3N 50HZ 8A
3500W 500W

IPX3  16A

Pressione Dinamica alimentazione idrica **200-500 kPa**

Pression dynamique arrivée d'eau

Dynamic pressure water supply

Dynamischer Druck asserreinlauf


Pressione dinamica vapore saturo

Pression dynamique vapore satueèè

Dymanischer Druck gesattigter Dampf

Pression Dinamica Vapor Saturado

TECHICAL SPECIFICATION




MADE IN ITALY


Temperatura massima acqua in ingresso **60°C**

Temperature max eau a l'entre

Maximale Temperatur Wasseranschlü

Maximum Water temperature in-feeding

Model 

S/N 



Spare parts

Зип Общепит

vsezip.ru

+7(812)987-08-81

vsezip.ru

+7(812)987-08-81

1. Spare parts

| | |
|-----------------------------------|----|
| General body parts..... | 9 |
| Closing panelig..... | 11 |
| Hood insulation..... | 13 |
| Control panel and switches..... | 15 |
| Electronic control HACCP | 17 |
| Electric control components | 19 |
| Solenoid valve group | 21 |
| Solenoid valve group | 23 |
| Break Tank | 25 |
| Booster pump..... | 27 |
| DVGW | 29 |
| Water softner group..... | 31 |
| Rinse aid dispenser group..... | 33 |
| Rinse aid dispenser group..... | 35 |
| Boiler group | 37 |
| 3 ways connection | 39 |

Wash pump group..... 41

Wash pump group..... 43

Dosing detergent group..... 45

Drain pump group..... 47

Pressure switch group with air trap ... 49

Turret group with rotating arms 51

Turret group with rotating arms 53

Turret group with rotating arms 57

1.1 Voltage codes

| Volt | Voltage code |
|------|-------------------------|
| A | 3/N/PE~380-400V 50-60Hz |
| D | 3/PE~200-210V 50-60Hz |
| F | 2/PE~220-240V 50-60Hz |
| G | 3/N/PE~415V 50-60Hz |
| H | 3/PE~220-230V 50-60Hz |
| K | 3/PE~380-400V 50-60Hz |
| L | 3/PE~415V 50-60Hz |
| M | 3/PE~440V 60Hz |
| P | 1/N/PE~220-230V 50-60Hz |
| R | 2/PE~220-240V 50-60Hz |
| U | 1/N/PE~240V 50-60Hz |
| V | 3/PE~240V 50-60Hz |
| W | 1/N/PE~100-110V 50-60Hz |

1.2 Product codes

| Product code | Full name |
|-----------------|----------------------|
| Model codes | |
| i | INSULATED HOOD |
| e | ELECTRONICAL CONTROL |
| Type codes | |
| 110E | 110E |
| Accessory codes | |
| bt | BREAK TANK |
| bp | BOOSTER PUMP |
| dvgw | DVGW |
| ws | WATER SOFTNER |
| dd | DETERGENT DISPENSER |
| dp | DRAIN PUMP |

| ID | P-code | SN from | SN to | Mod. | Acces. | Volt | Description |
|----------------------------------|----------|---------|-------|------|--------|------|--|
| Module:General body parts | | | | | | | |
| 42490 | 11600055 | | - | | | | Right/left slide bearing |
| 42495 | 11600001 | | - | | | | Rack frame |
| 42500 | 11600621 | | - | | | | Left guide rail support |
| 42505 | 13324 | | - | | | | Cable screw cap |
| 42510 | 15065/A | | - | | | | Cable-fastener with screw |
| 42515 | 15116 | | - | | | | Foot |
| 42520 | 500606 | | - | | | | Right side scrap tray |
| 42525 | 150047 | | - | | | | 2,7/2,94KW 230/240V heating element |
| 42530 | 76000 | | - | | | | Frame assembly |
| 42535 | 11600018 | | - | | | | Basket support holder pin M6 |
| 42540 | 11600907 | | - | | | | Strainer plate |
| 42545 | 11600620 | | - | | | | Right guide rail support |
| 42555 | 70305 | | - | | | | Hood switch |
| 42560 | 11600630 | | - | | | | Back panel |
| 42565 | 10600923 | | - | | | | Guide rail |
| 42570 | 500615 | | - | | | | Ferrule with filter |
| 42575 | 500616 | | - | | | | Suction filter |
| 42580 | 13021 | | - | | | | DEM 40 O-ring |
| 42585 | 500619 | | - | | | | Overflow pipe |
| 42590 | 80208 | | - | | | | 95x75x3 O-ring |
| 42595 | 76007 | | - | | | | Sleeper holder-filter |
| 42596 | 500600 | | - | | | | Interior filter with rack |
| 42597 | 500607 | | - | | | | Ferrule with filter |
| 42598 | 10700 | | - | | | | Spring |
| 42599 | 11600059 | | - | | | | Support for the security system assembly |
| 42600 | 76252 | | - | | | | Security system cord |
| 42601 | 11600058 | | - | | | | Passage ring for the security cord |

i=INSULATED HOOD, e=ELECTRONICAL CONTROL

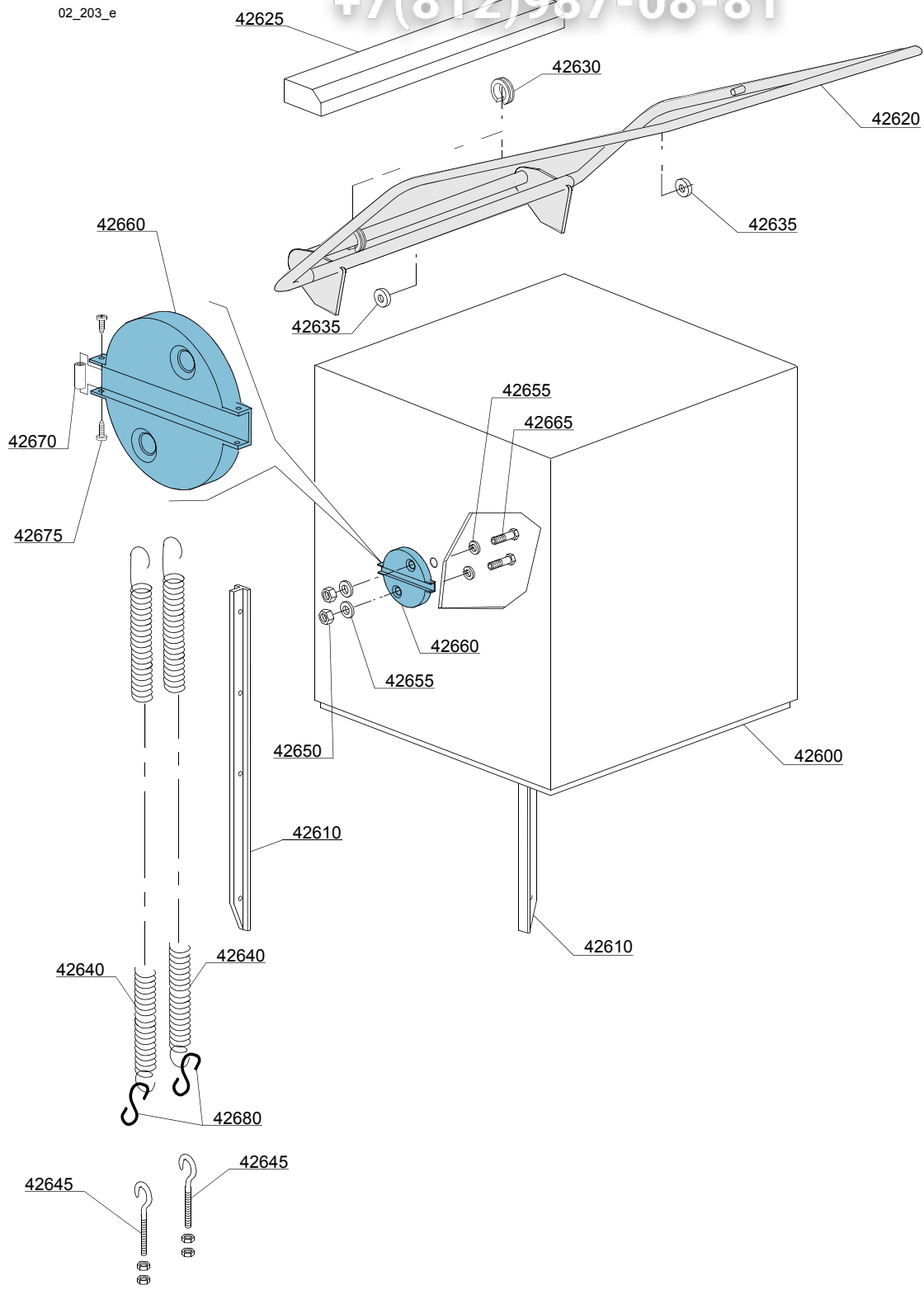
110E=110E

bt=BREAK TANK, bp=BOOSTER PUMP, dvgw=DVGW, ws=WATER SOFTNER, dd=DETERGENT DISPENSER, dp=DRAIN PUMP

A=3/N/PE~380-400V 50-60Hz, D=3/PE~200-210V 50-60Hz, F=2/PE~220-240V 50-60Hz, G=3/N/PE~415V 50-60Hz, H=3/PE~220-230V 50-60Hz, K=3/PE~380-400V 50-60Hz, L=3/PE~415V 50-60Hz, M=3/PE~440V 60Hz, P=1/N/PE~220-230V 50-60Hz, R=2/PE~220-240V 50-60Hz, U=1/N/PE~240V 50-60Hz, V=3/PE~240V 50-60Hz, W=1/N/PE~100-110V 50-60Hz

vsezip.ru

+7(812)987-08-81



vsezip.ru

| ID | P-code | SN from | SN to | Mod. | Acces. | Volt | Description |
|--------------------------------|----------|---------|-------|------|--------|------|-------------------------------------|
| Module: Closing panelig | | | | | | | |
| 42600 | 76001 | | - | | | | Hood, complete |
| 42610 | 76080 | | - | | | | Guide |
| 42620 | 76075 | | - | | | | Handle |
| 42625 | 11600913 | | - | | | | Spoiler |
| 42630 | 70306 | | - | | | | Spring hook joint |
| 42635 | 89919 | | - | | | | Bearing |
| 42640 | 75303 | | - | | | | Hood spring |
| 42645 | 10800210 | | - | | | | Hook screw |
| 42650 | 11718 | | - | | | | M8 stainless steel self-locking nut |
| 42655 | 13301 | | - | | | | Gasket 14x8x1,5 |
| 42660 | 11600036 | | - | | | | Bearing holder (grey) |
| 42665 | 11216 | | - | | | | Inox screw M8x20 TE |
| 42670 | 76251 | | - | | | | Spacer |
| 42675 | 11121 | | - | | | | M4x10 TCB Inox screw |
| 42680 | 76253 | | - | | | | "S"Hook D6x65 |

i=INSULATED HOOD, e=ELECTRONICAL CONTROL

110E=110E

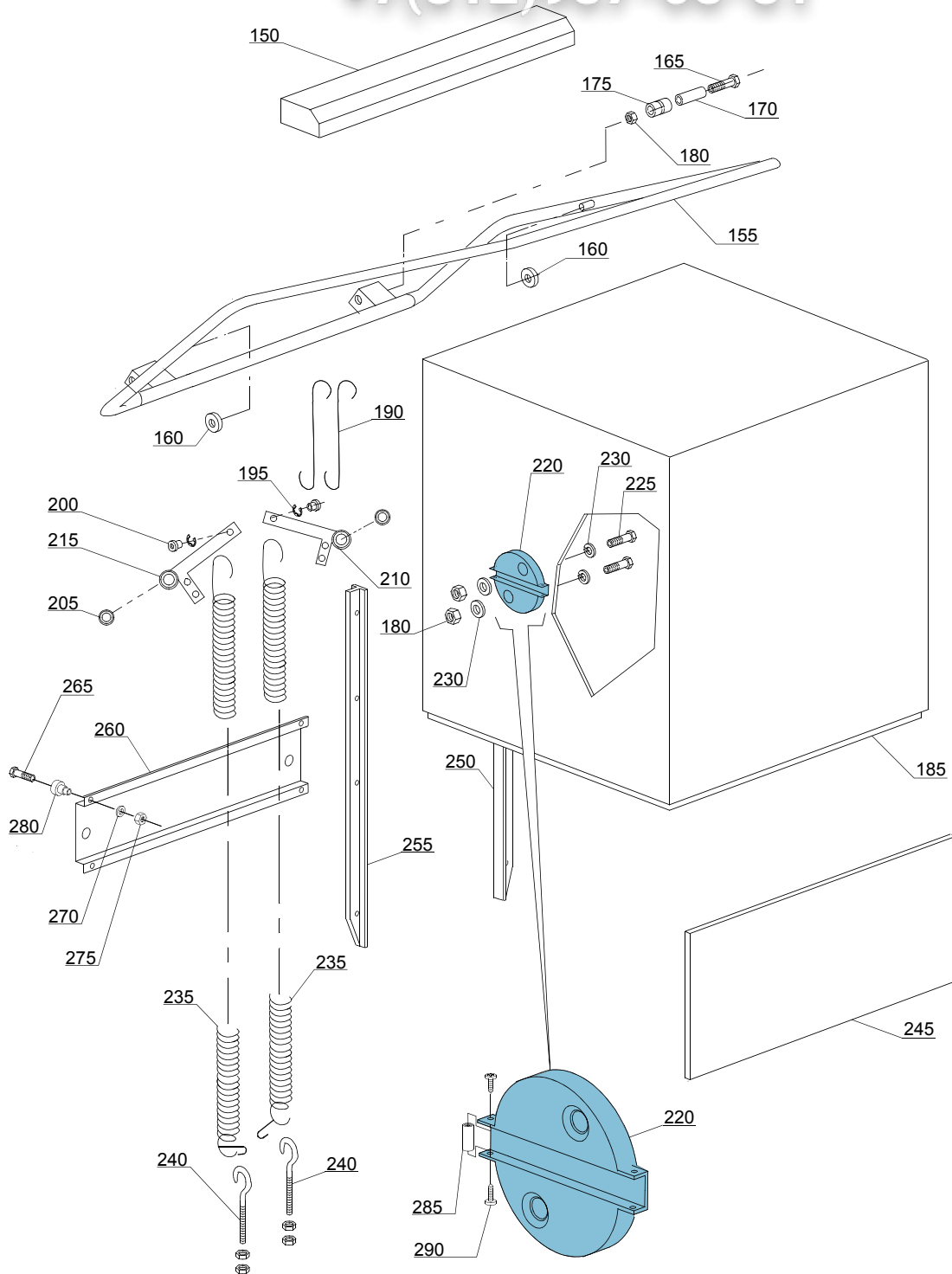
bt=BREAK TANK, bp=BOOSTER PUMP, dvgw=DVGW, ws=WATER SOFTNER, dd=DETERGENT DISPENSER, dp=DRAIN PUMP

A=3/N/PE~380-400V 50-60Hz, D=3/PE~200-210V 50-60Hz, F=2/PE~220-240V 50-60Hz, G=3/N/PE~415V 50-60Hz, H=3/PE~220-230V 50-60Hz, K=3/PE~380-400V 50-60Hz, L=3/PE~415V 50-60Hz, M=3/PE~440V 60Hz, P=1/N/PE~220-230V 50-60Hz, R=2/PE~220-240V 50-60Hz, U=1/N/PE~240V 50-60Hz, V=3/PE~240V 50-60Hz, W=1/N/PE~100-110V 50-60Hz

vsezip.ru

+7(812)987-08-81

02_202_e



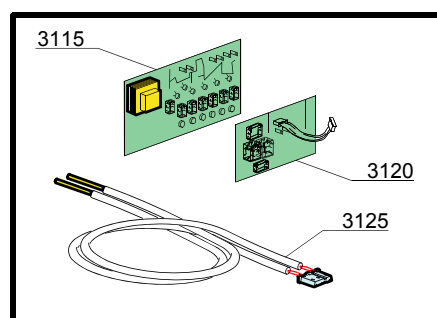
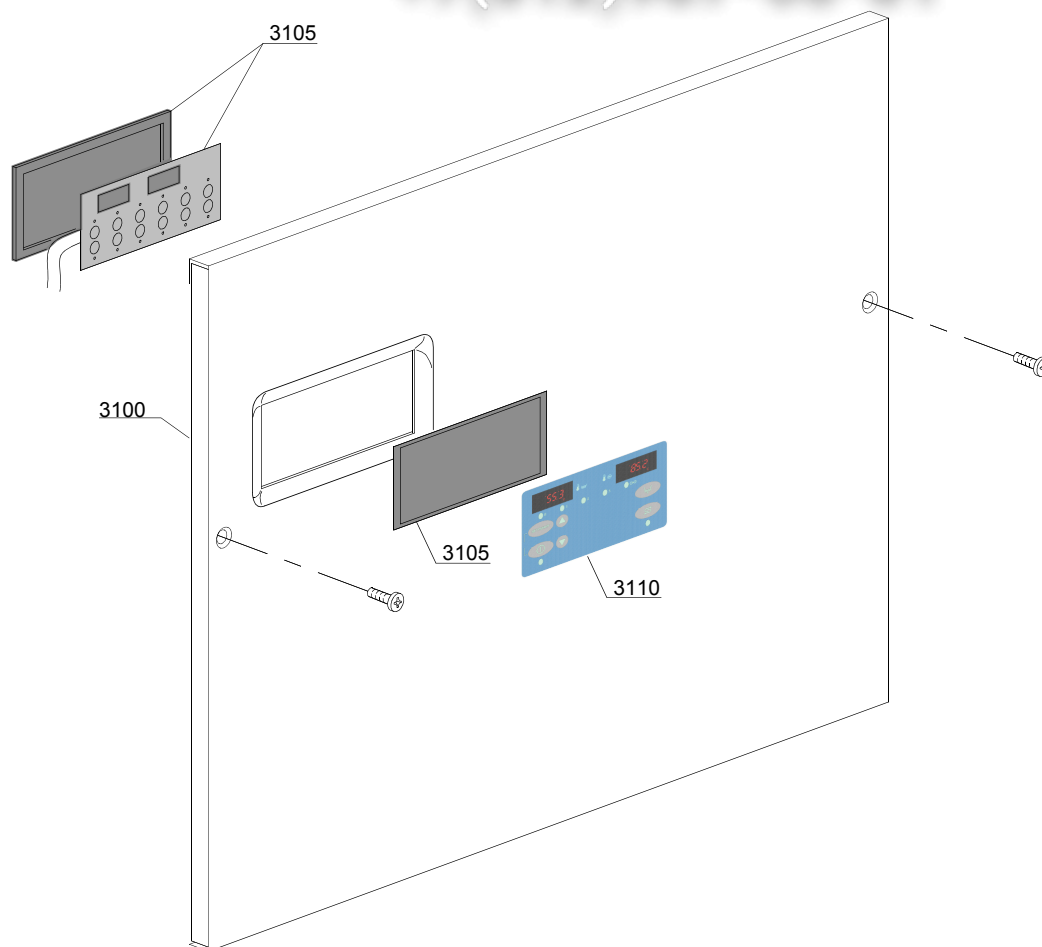
| ID | P-code | SN from | SN to | Mod. | Acces. | Volt | Description |
|-------------------------------|----------|---------|-------|------|--------|------|-------------------------------------|
| Module:Hood insulation | | | | | | | |
| 150 | 11600913 | | - | | | | Guide |
| 155 | 11600910 | | - | | | | Handle |
| 160 | 89919 | | - | | | | Bearing |
| 165 | 11214 | | - | | | | Screw |
| 170 | 11600015 | | - | | | | Filter |
| 175 | 11600014 | | - | | | | Roller |
| 180 | 11718 | | - | | | | M8 stainless steel self-locking nut |
| 185 | 11600902 | | - | | | | Hood, complete |
| 190 | 11600013 | | - | | | | Hook |
| 195 | 11823 | | - | | | | Ø10 stainless steel snap ring |
| 200 | 11600038 | | - | | | | Spring bush |
| 205 | 10800010 | | - | | | | Bearing |
| 210 | 11600026 | | - | | | | Elbow, right |
| 215 | 11600027 | | - | | | | Elbow, left |
| 220 | 11600030 | | - | | | | Bearing holder |
| 225 | 11110 | | - | | | | Screw |
| 230 | 13301 | | - | | | | Gasket |
| 235 | 70302 | | - | | | | Hood spring |
| 240 | 10800210 | | - | | | | Hook screw |
| 250 | 11600028 | | - | | | | Guide, right |
| 255 | 11600029 | | - | | | | Guide, left |
| 260 | 11600624 | | - | | | | Leavers bearing for hood |
| 265 | 11134 | | - | | | | M10x35 TE Stainless steel screw |
| 270 | 11192 | | - | | | | M10 Stainless steel spring washer |
| 275 | 11719 | | - | | | | M10 inox nut |
| 280 | 10800115 | | - | | | | Lifting rod pin |
| 285 | 76251 | | - | | | | Spacer |
| 290 | 11121 | | - | | | | M4x10 TCB Inox screw |

i=INSULATED HOOD, e=ELECTRONICAL CONTROL

110E=110E

bt=BREAK TANK, bp=BOOSTER PUMP, dvgw=DVGW, ws=WATER SOFTNER, dd=DETERGENT DISPENSER, dp=DRAIN PUMP

A=3/N/PE~380-400V 50-60Hz, D=3/PE~200-210V 50-60Hz, F=2/PE~220-240V 50-60Hz, G=3/N/PE~415V 50-60Hz, H=3/PE~220-230V 50-60Hz, K=3/PE~380-400V 50-60Hz, L=3/PE~415V 50-60Hz, M=3/PE~440V 60Hz, P=1/N/PE~220-230V 50-60Hz, R=2/PE~220-240V 50-60Hz, U=1/N/PE~240V 50-60Hz, V=3/PE~240V 50-60Hz, W=1/N/PE~100-110V 50-60Hz



vsezip.ru

| ID | P-code | SN from | SN to | Mod. | Acces. | Volt | Description |
|---|----------|---------|-------|------|--------|------|--|
| Module: Control panel and switches | | | | | | | |
| 3100 | 11600959 | | - | | | | Control panel |
| 3105 | 50570 | | - | | | | Compleat membrane push button-driver |
| 3110 | 50599 | | - | | dp,ws | | Silkscreen processed grill membrane push button-driver dp+ws [F] |
| 3110 | 50575 | | - | | dp,ws | | Neutral silkscreen processed grill membrane push button-driver dp+ws [N] |
| 3110 | 50578 | | - | | dp,ws | | Silkscreen processed grill membrane push button-driver dp+ws [K] |
| 3115 | 50569 | | - | | | | Electronic card without chip |
| 3120 | 50559 | | - | | dp | | Circuit board Exp-Ps |
| 3120 | 50568 | | - | | ws | | Circuit board Exp-Dep |
| 3125 | 50562 | | - | | | | Sensor |

i=INSULATED HOOD, e=ELECTRONICAL CONTROL

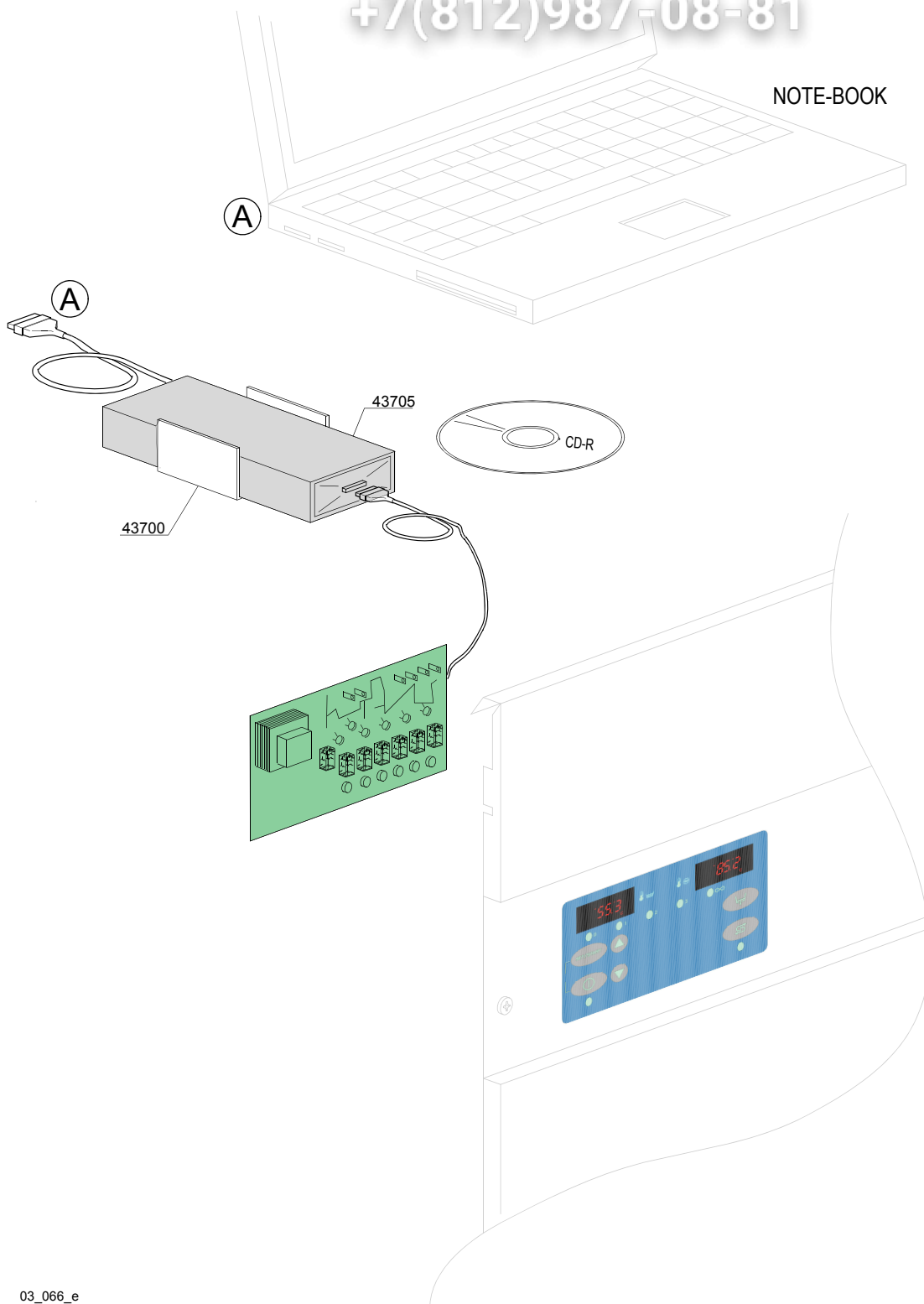
110E=110E

bt=BREAK TANK, bp=BOOSTER PUMP, dvgw=DVGW, ws=WATER SOFTNER, dd=DETERGENT DISPENSER, dp=DRAIN PUMP

A=3/N/PE~380-400V 50-60Hz, D=3/PE~200-210V 50-60Hz, F=2/PE~220-240V 50-60Hz, G=3/N/PE~415V 50-60Hz, H=3/PE~220-230V 50-60Hz, K=3/PE~380-400V 50-60Hz, L=3/PE~415V 50-60Hz, M=3/PE~440V 60Hz, P=1/N/PE~220-230V 50-60Hz, R=2/PE~220-240V 50-60Hz, U=1/N/PE~240V 50-60Hz, V=3/PE~240V 50-60Hz, W=1/N/PE~100-110V 50-60Hz

vsezip.ru

+7(812)987-08-81



03_066_e

vsezip.ru

| ID | P-code | SN from | SN to | Mod. | Acces. | Volt | Description |
|--|----------|---------|-------|------|--------|------|--------------------------|
| Module:Electronic control HACCP | | | | | | | |
| 43700 | 3060200 | | - | e | | | Support DATA-LOGGER |
| 43705 | 99910217 | | - | e | | | Kit remote control HACCP |

i=INSULATED HOOD, e=ELECTRONICAL CONTROL

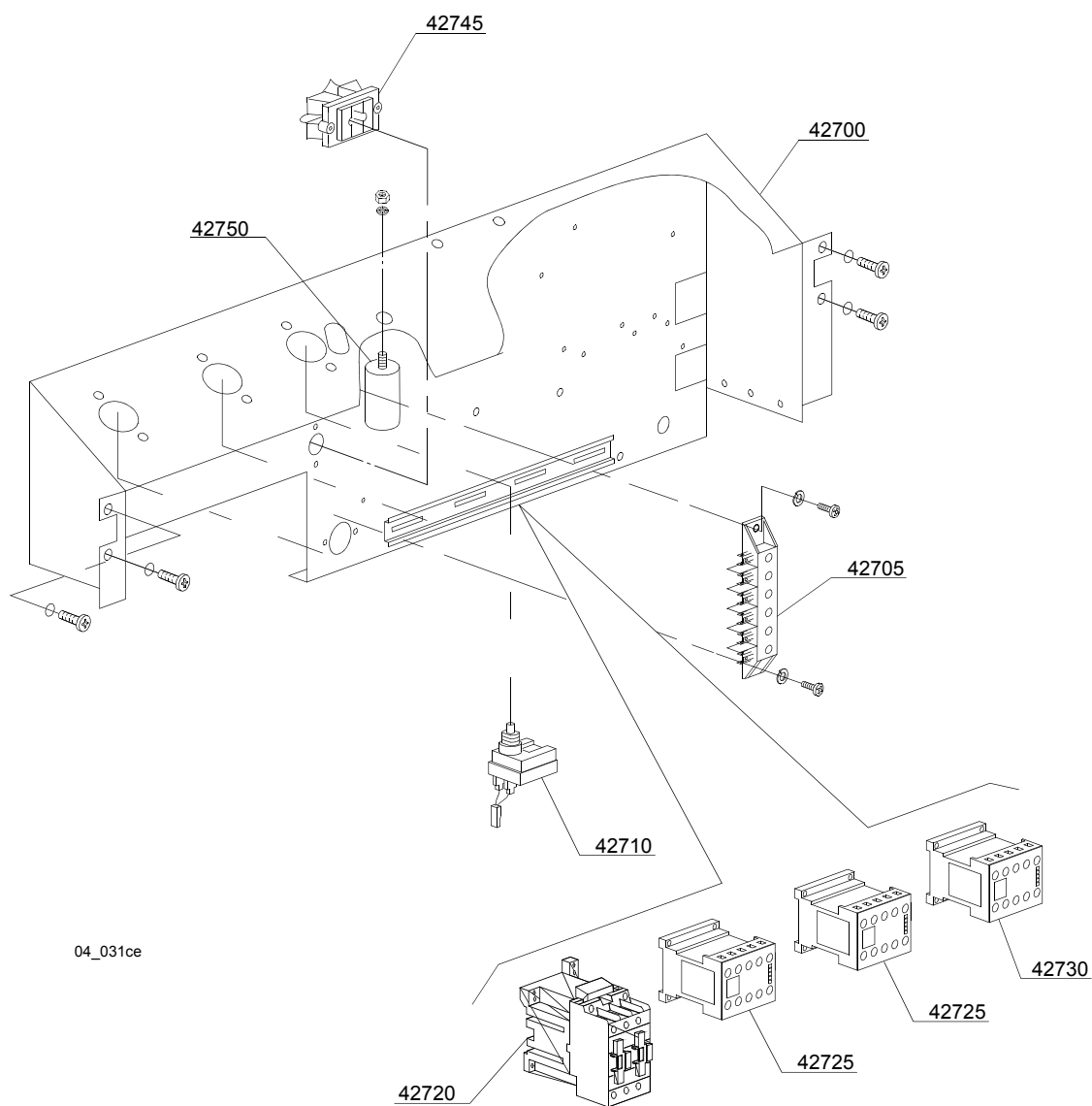
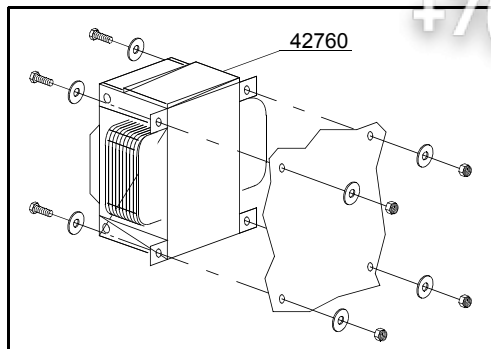
110E=110E

bt=BREAK TANK, bp=BOOSTER PUMP, dvgw=DVGW, ws=WATER SOFTNER, dd=DETERGENT DISPENSER, dp=DRAIN PUMP

A=3/N/PE~380-400V 50-60Hz, D=3/PE~200-210V 50-60Hz, F=2/PE~220-240V 50-60Hz, G=3/N/PE~415V 50-60Hz, H=3/PE~220-230V 50-60Hz, K=3/PE~380-400V 50-60Hz, L=3/PE~415V 50-60Hz, M=3/PE~440V 60Hz, P=1/N/PE~220-230V 50-60Hz, R=2/PE~220-240V 50-60Hz, U=1/N/PE~240V 50-60Hz, V=3/PE~240V 50-60Hz, W=1/N/PE~100-110V 50-60Hz

vsezip.ru

+7(812)987-08-81



vsezip.ru

| ID | P-code | SN from | SN to | Mod | Acces. | Volt | Description |
|--|----------|---------|-------|-----|--------|------|--|
| Module: Electric control components | | | | | | | |
| 42700 | 76002 | | - | | | | Electric component panel |
| 42705 | 500551 | | - | | | | 6 poles terminal board |
| 42710 | 2000430 | | - | | | | Safety thermostat |
| 42720 | 10300050 | | - | | | | 25A/12A contactor - 230V 50/60HZ |
| 42720 | 10300052 | | - | | | | 36A/20A contactor - 230V 50/60HZ |
| 42720 | 10300054 | | - | | | | 25A/16A contactor - 230V 50/60HZ |
| 42725 | 15086 | | - | | | | Contactor 230V 50/60Hz 4C |
| 42725 | 15086/B | | - | | | | Contactor 240V 50Hz |
| 42730 | 10300391 | | - | | | | 3NA/1NC contactor 230V 50/60HZ |
| 42730 | 10300392 | | - | | | | 3NA/1NC contactor - 240Vac 50Hz |
| 42745 | 15065/A | | - | | | | Cable-fastener with screw |
| 42750 | 15149 | | - | | | | Low noise filter |
| 42760 | 15381 | | - | | | | 0-230 160/230/400/415/440 VA Transformer |

i=INSULATED HOOD, e=ELECTRONICAL CONTROL

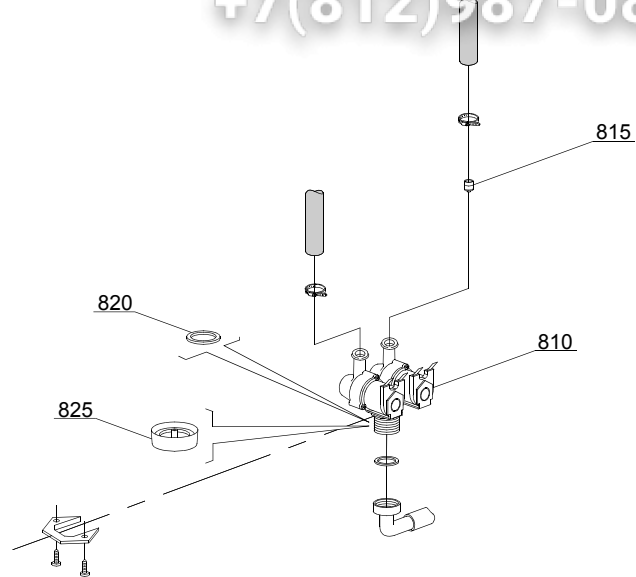
110E=110E

bt=BREAK TANK, bp=BOOSTER PUMP, dvgw=DVGW, ws=WATER SOFTNER, dd=DETERGENT DISPENSER, dp=DRAIN PUMP

A=3/N/PE~380-400V 50-60Hz, D=3/PE~200-210V 50-60Hz, F=2/PE~220-240V 50-60Hz, G=3/N/PE~415V 50-60Hz, H=3/PE~220-230V 50-60Hz, K=3/PE~380-400V 50-60Hz, L=3/PE~415V 50-60Hz, M=3/PE~440V 60Hz, P=1/N/PE~220-230V 50-60Hz, R=2/PE~220-240V 50-60Hz, U=1/N/PE~240V 50-60Hz, V=3/PE~240V 50-60Hz, W=1/N/PE~100-110V 50-60Hz

vsezip.ru

+7(812)987-08-81



05_003_e

vsezip.ru

| ID | P-code | SN from | SN to | Mod. | Acces. | Volt | Description |
|------------------------------------|--------|---------|-------|------|--------|------|-------------------------------|
| Module:Solenoid valve group | | | | | | | |
| 810 | 15098 | | - | i | ws | | Double solenoid valve - Ø10 |
| 815 | 15115 | | - | i | ws | | Green pression solenoid valve |
| 820 | N.C. | | - | i | ws | | Pression reducing valve |

i=INSULATED HOOD, e=ELECTRONICAL CONTROL

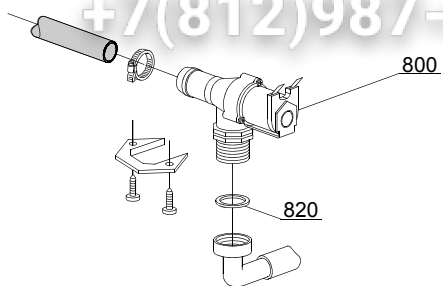
110E=110E

bt=BREAK TANK, bp=BOOSTER PUMP, dvgw=DVGW, ws=WATER SOFTNER, dd=DETERGENT DISPENSER, dp=DRAIN PUMP

A=3/N/PE~380-400V 50-60Hz, D=3/PE~200-210V 50-60Hz, F=2/PE~220-240V 50-60Hz, G=3/N/PE~415V 50-60Hz, H=3/PE~220-230V 50-60Hz, K=3/PE~380-400V 50-60Hz, L=3/PE~415V 50-60Hz, M=3/PE~440V 60Hz, P=1/N/PE~220-230V 50-60Hz, R=2/PE~220-240V 50-60Hz, U=1/N/PE~240V 50-60Hz, V=3/PE~240V 50-60Hz, W=1/N/PE~100-110V 50-60Hz

vsezip.ru

+7(812)987-08-81



05_005_e

| ID | P-code | SN from | SN to | Mod | Acces. | Volt | Description |
|------------------------------------|----------|---------|-------|-----|--------|------|-------------------------|
| Module:Solenoid valve group | | | | | | | |
| 800 | 30001000 | | - | i | | | Solenoid valve |
| 820 | N.C. | | - | i | | | Pression reducing valve |

i=INSULATED HOOD, e=ELECTRONICAL CONTROL

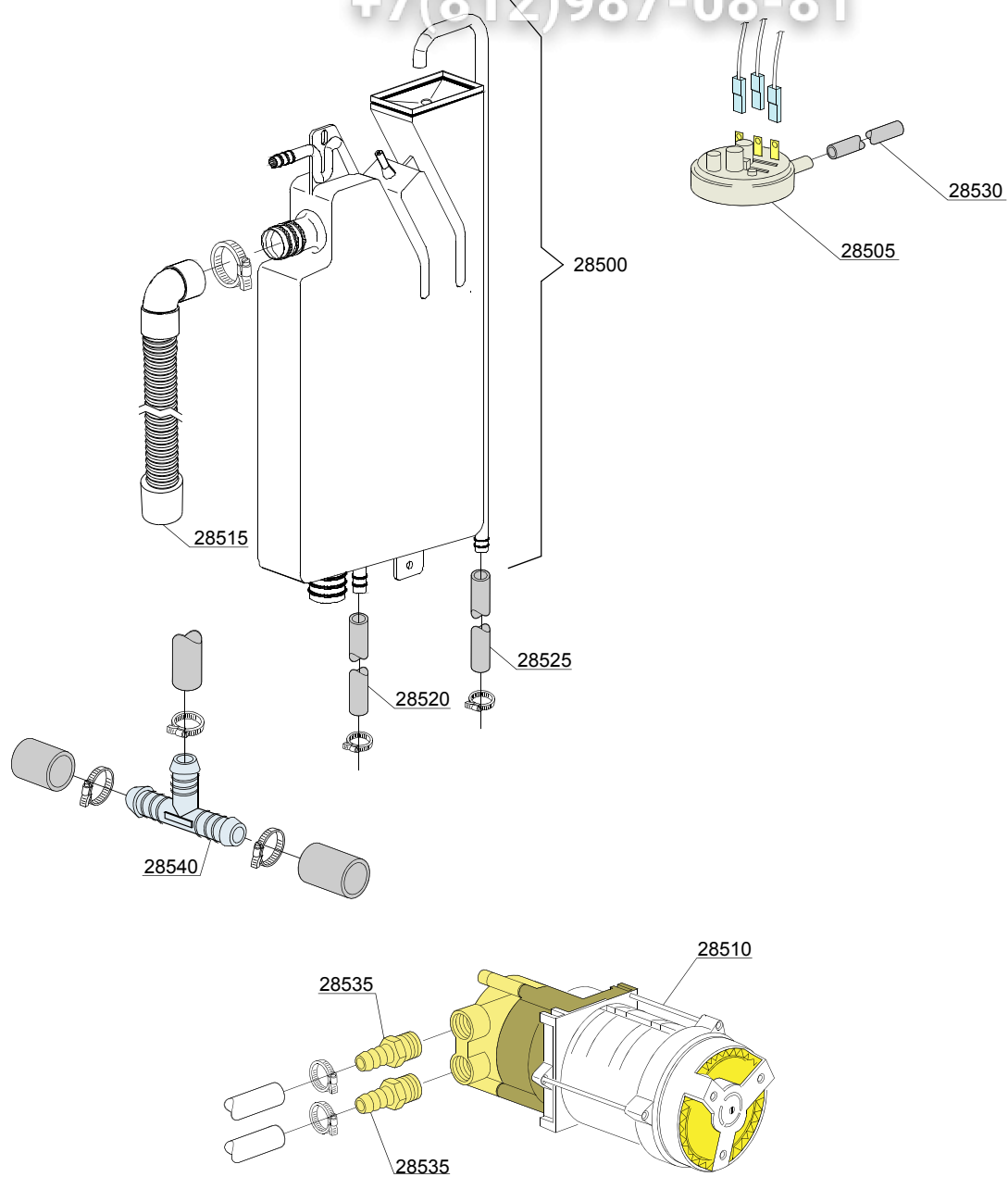
110E=110E

bt=BREAK TANK, bp=BOOSTER PUMP, dvgw=DVGW, ws=WATER SOFTNER, dd=DETERGENT DISPENSER, dp=DRAIN PUMP

A=3/N/PE~380-400V 50-60Hz, D=3/PE~200-210V 50-60Hz, F=2/PE~220-240V 50-60Hz, G=3/N/PE~415V 50-60Hz, H=3/PE~220-230V 50-60Hz, K=3/PE~380-400V 50-60Hz, L=3/PE~415V 50-60Hz, M=3/PE~440V 60Hz, P=1/N/PE~220-230V 50-60Hz, R=2/PE~220-240V 50-60Hz, U=1/N/PE~240V 50-60Hz, V=3/PE~240V 50-60Hz, W=1/N/PE~100-110V 50-60Hz

vsezip.ru

+7(812)987-08-81



06_004pe

vsezip.ru

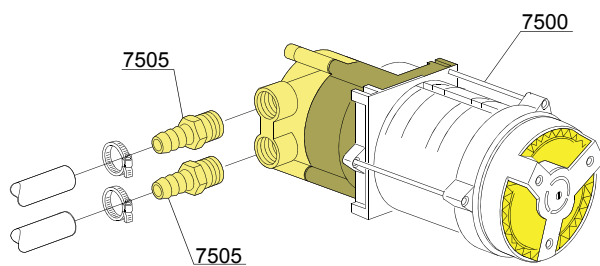
| ID | P-code | SN from | SN to | Mod | Acces. | Volt | Description |
|--------------------------|----------|---------|-------|-----|--------|------|---|
| Module:Break Tank | | | | | | | |
| 28505 | 10706/A | | - | e,i | bt | | 47-27 pressure switch |
| 28510 | 15100/D | | - | e,i | bt | | Booster pump 220/240V - body pumps in brass |
| 28515 | 15722 | | - | e,i | bt | | BT middle pipe L=920 |
| 28520 | 2907350 | | - | e,i | bt | | 12x20 EPDM rubber hose |
| 28525 | 2907352 | | - | e,i | bt | | PVC WRAS rubber hose |
| 28530 | 14508 | | - | e,i | bt | | 4,5x9 EPDM rubber hose (minimum 2 mt) |
| 28535 | 10221311 | | - | e,i | bt | | Rubber holder Ø 12 3/8G |
| 28540 | 540098 | | | e,i | bt | | 3 ways D25 |

i=INSULATED HOOD, e=ELECTRONICAL CONTROL

110E=110E

bt=BREAK TANK, bp=BOOSTER PUMP, dvgw=DVGW, ws=WATER SOFTNER, dd=DETERGENT DISPENSER, dp=DRAIN PUMP

A=3/N/PE~380-400V 50-60Hz, D=3/PE~200-210V 50-60Hz, F=2/PE~220-240V 50-60Hz, G=3/N/PE~415V 50-60Hz, H=3/PE~220-230V 50-60Hz, K=3/PE~380-400V 50-60Hz, L=3/PE~415V 50-60Hz, M=3/PE~440V 60Hz, P=1/N/PE~220-230V 50-60Hz, R=2/PE~220-240V 50-60Hz, U=1/N/PE~240V 50-60Hz, V=3/PE~240V 50-60Hz, W=1/N/PE~100-110V 50-60Hz



VERSIONE STANDARD / VERSIONE POMPA AUM. PRESSIONE
STANDARD VERSION / BOOSTER PUMP VERSION
VERSION STANDARD / VERSION POMPE AUGMENT. PRESSION

vsezip.ru

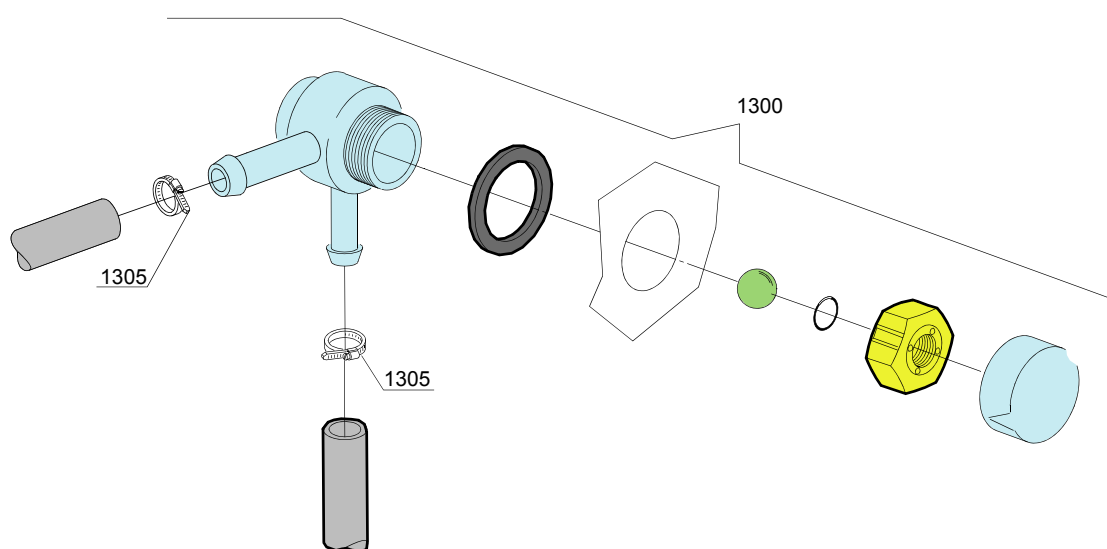
| ID | P-code | SN from | SN to | Mod. | Acces. | Volt | Description |
|----------------------------|----------|---------|-------|-------|--------|------|---|
| Module:Booster pump | | | | | | | |
| 7500 | 15100/D | | - | e,i,i | bp | | Booster pump 220/240V - body pumps in brass |
| 7505 | 10221311 | | - | e,i,i | bp | | Rubber holder Ø 12 3/8G |

i=INSULATED HOOD, e=ELECTRONICAL CONTROL

110E=110E

bt=BREAK TANK, bp=BOOSTER PUMP, dvgw=DVGW, ws=WATER SOFTNER, dd=DETERGENT DISPENSER, dp=DRAIN PUMP

A=3/N/PE~380-400V 50-60Hz, D=3/PE~200-210V 50-60Hz, F=2/PE~220-240V 50-60Hz, G=3/N/PE~415V 50-60Hz, H=3/PE~220-230V 50-60Hz, K=3/PE~380-400V 50-60Hz, L=3/PE~415V 50-60Hz, M=3/PE~440V 60Hz, P=1/N/PE~220-230V 50-60Hz, R=2/PE~220-240V 50-60Hz, U=1/N/PE~240V 50-60Hz, V=3/PE~240V 50-60Hz, W=1/N/PE~100-110V 50-60Hz



vsezip.ru

| ID | P-code | SN from | SN to | Mod | Acces. | Volt | Description |
|---------------------|---------|---------|-------|-----|--------|------|---------------|
| Module: DVGW | | | | | | | |
| 1300 | 9814351 | | - | | dvgw | | DVGW assembly |
| 1305 | 11807 | | - | | dvgw | | Clamp 12/22 |

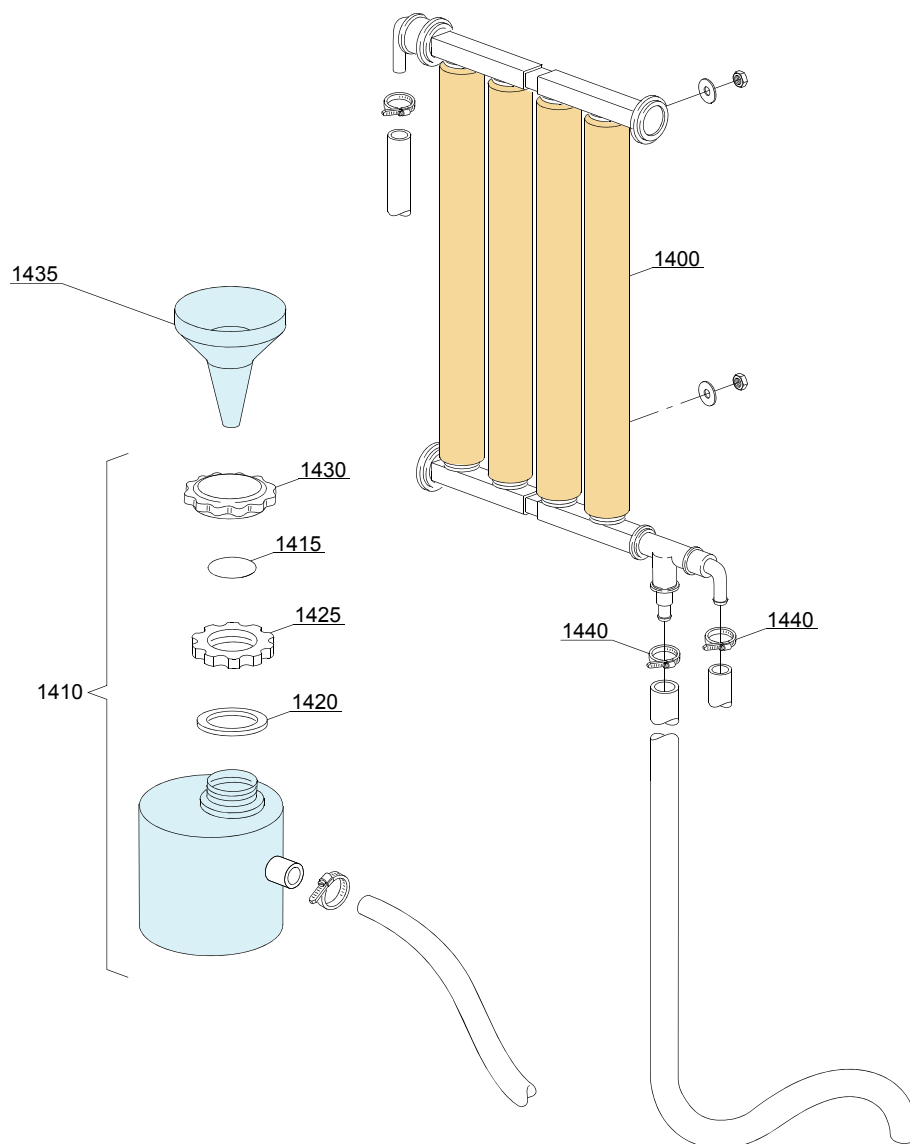
i=INSULATED HOOD, e=ELECTRONICAL CONTROL

110E=110E

bt=BREAK TANK, bp=BOOSTER PUMP, dvgw=DVGW, ws=WATER SOFTNER, dd=DETERGENT DISPENSER, dp=DRAIN PUMP

A=3/N/PE~380-400V 50-60Hz, D=3/PE~200-210V 50-60Hz, F=2/PE~220-240V 50-60Hz, G=3/N/PE~415V 50-60Hz, H=3/PE~220-230V 50-60Hz, K=3/PE~380-400V 50-60Hz, L=3/PE~415V 50-60Hz, M=3/PE~440V 60Hz, P=1/N/PE~220-230V 50-60Hz, R=2/PE~220-240V 50-60Hz, U=1/N/PE~240V 50-60Hz, V=3/PE~240V 50-60Hz, W=1/N/PE~100-110V 50-60Hz

09_001_e



vsezip.ru

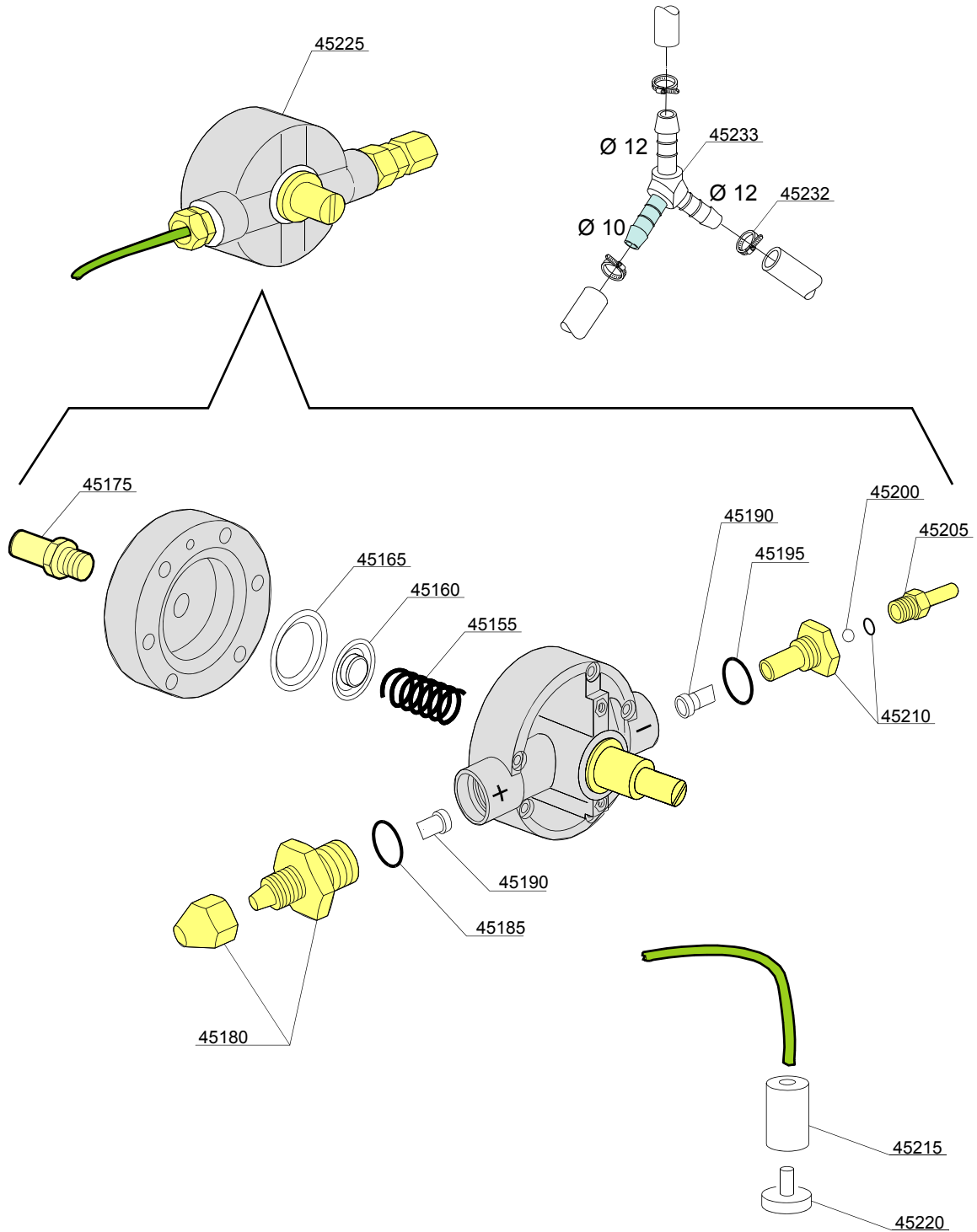
| ID | P-code | SN from | SN to | Mod | Acces. | Volt | Description |
|------------------------------------|---------|---------|-------|-----|--------|------|--------------------------|
| Module: Water softner group | | | | | | | |
| 1400 | 16066 | | - | | ws | | 4 elements water softner |
| 1405 | 16070 | | - | | ws | | Nonreturn valve |
| 1410 | 16065 | | - | | ws | | Salt container |
| 1415 | 16067/A | | - | | ws | | OR O-ring |
| 1420 | 16067/B | | - | | ws | | O-ring |
| 1425 | 16067/C | | - | | ws | | Ring nut |
| 1430 | 16067/D | | - | | ws | | Plug |
| 1435 | 16082 | | - | | ws | | Funnel |

i=INSULATED HOOD, e=ELECTRONICAL CONTROL

110E=110E

bt=BREAK TANK, bp=BOOSTER PUMP, dvgw=DVGW, ws=WATER SOFTNER, dd=DETERGENT DISPENSER, dp=DRAIN PUMP

A=3/N/PE~380-400V 50-60Hz, D=3/PE~200-210V 50-60Hz, F=2/PE~220-240V 50-60Hz, G=3/N/PE~415V 50-60Hz, H=3/PE~220-230V 50-60Hz, K=3/PE~380-400V 50-60Hz, L=3/PE~415V 50-60Hz, M=3/PE~440V 60Hz, P=1/N/PE~220-230V 50-60Hz, R=2/PE~220-240V 50-60Hz, U=1/N/PE~240V 50-60Hz, V=3/PE~240V 50-60Hz, W=1/N/PE~100-110V 50-60Hz



| ID | P-code | SN from | SN to | Mod. | Acces. | Volt | Description |
|--|---------|---------|-------|------|--------|------|--------------------------------------|
| Module: Rinse aid dispenser group | | | | | | | |
| 45155 | 10705/M | | - | e | | | Spring |
| 45160 | 10705/N | | - | e | | | Disc to membrane |
| 45165 | 10705/O | | - | e | | | Membrane |
| 45175 | 12506 | | - | e | | | Rubber-holder Ø 10mm |
| 45180 | 10705/G | | - | e | | | Pipe fitting |
| 45185 | 10705/C | | - | e | | | OR-gasket |
| 45190 | 10705/D | | - | e | | | Silicone valve |
| 45195 | 10705/C | | - | e | | | OR-gasket |
| 45200 | 10705/T | | - | e | | | Sphere made of Teflon |
| 45205 | 10705/R | | - | e | | | Brass pipe fitting |
| 45210 | 10705/E | | - | e | | | OR-gasket Guide valve |
| 45215 | 12525 | | - | e | | | Ballast |
| 45220 | 15058 | | - | e | | | Small filter (minimum 3 pieces) |
| 45225 | 10799/G | | - | e | | | GERMAC rinse aid dispenser |
| 45232 | 11807 | | - | e | | | Clamp 12/22 (min. 3 pz) |
| 45233 | 540105 | | - | e | | | Plastic 3 ways connection Ø 12-10-12 |

i=INSULATED HOOD, e=ELECTRONICAL CONTROL

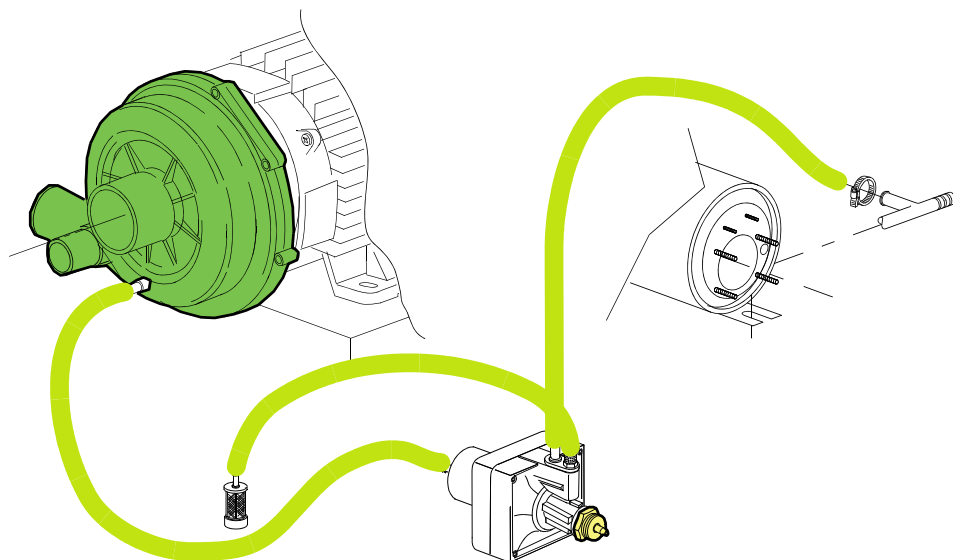
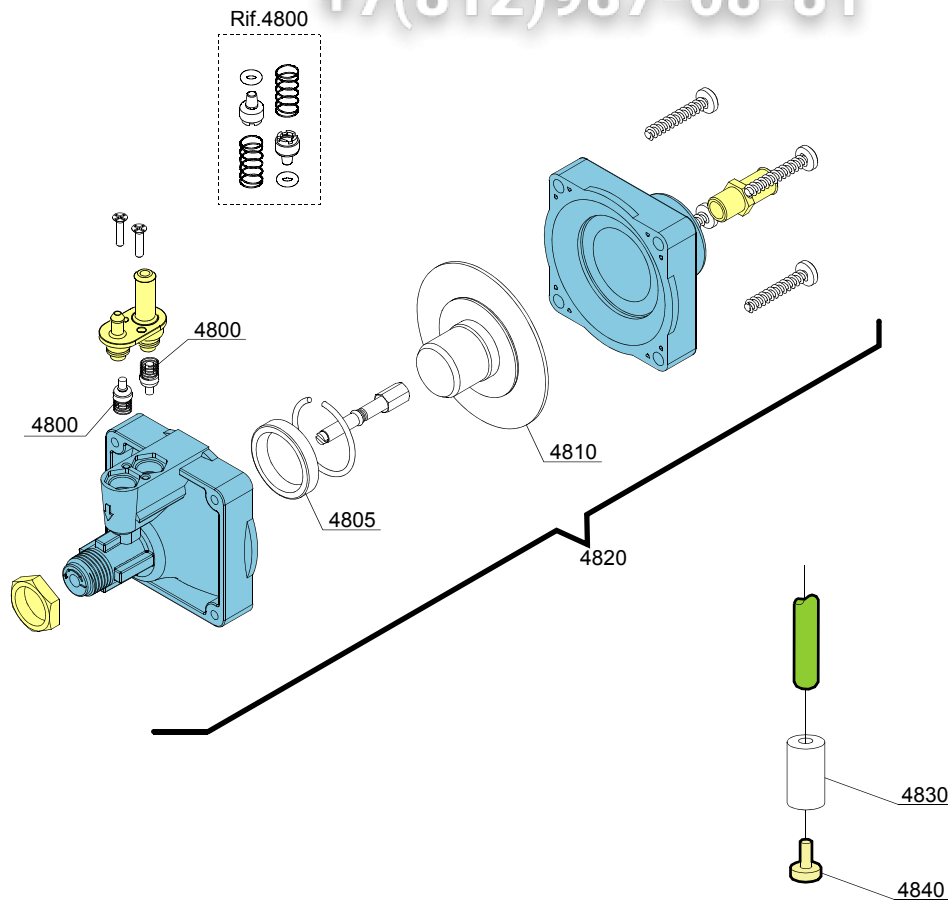
110E=110E

bt=BREAK TANK, bp=BOOSTER PUMP, dvgw=DVGW, ws=WATER SOFTNER, dd=DETERGENT DISPENSER, dp=DRAIN PUMP

A=3/N/PE~380-400V 50-60Hz, D=3/PE~200-210V 50-60Hz, F=2/PE~220-240V 50-60Hz, G=3/N/PE~415V 50-60Hz, H=3/PE~220-230V 50-60Hz, K=3/PE~380-400V 50-60Hz, L=3/PE~415V 50-60Hz, M=3/PE~440V 60Hz, P=1/N/PE~220-230V 50-60Hz, R=2/PE~220-240V 50-60Hz, U=1/N/PE~240V 50-60Hz, V=3/PE~240V 50-60Hz, W=1/N/PE~100-110V 50-60Hz

vsezip.ru

+7(812)987-08-81



| ID | P-code | SN from | SN to | Mod | Acces. | Volt | Description |
|--|--------|---------|-------|-----|--------|------|---------------------------|
| Module: Rinse aid dispenser group | | | | | | | |
| 4800 | 10805 | | - | i | | | Tecnopro non return valve |
| 4805 | 10806 | | - | i | | | Ø22 O-ring |
| 4810 | 10807 | | - | i | | | Membrane |
| 4820 | 10799 | | - | i | | | Rinse aid dispenser |
| 4830 | 12525 | | - | i | | | Counter-weight |
| 4840 | 15058 | | - | i | | | Small filter |

i=INSULATED HOOD, e=ELECTRONICAL CONTROL

110E=110E

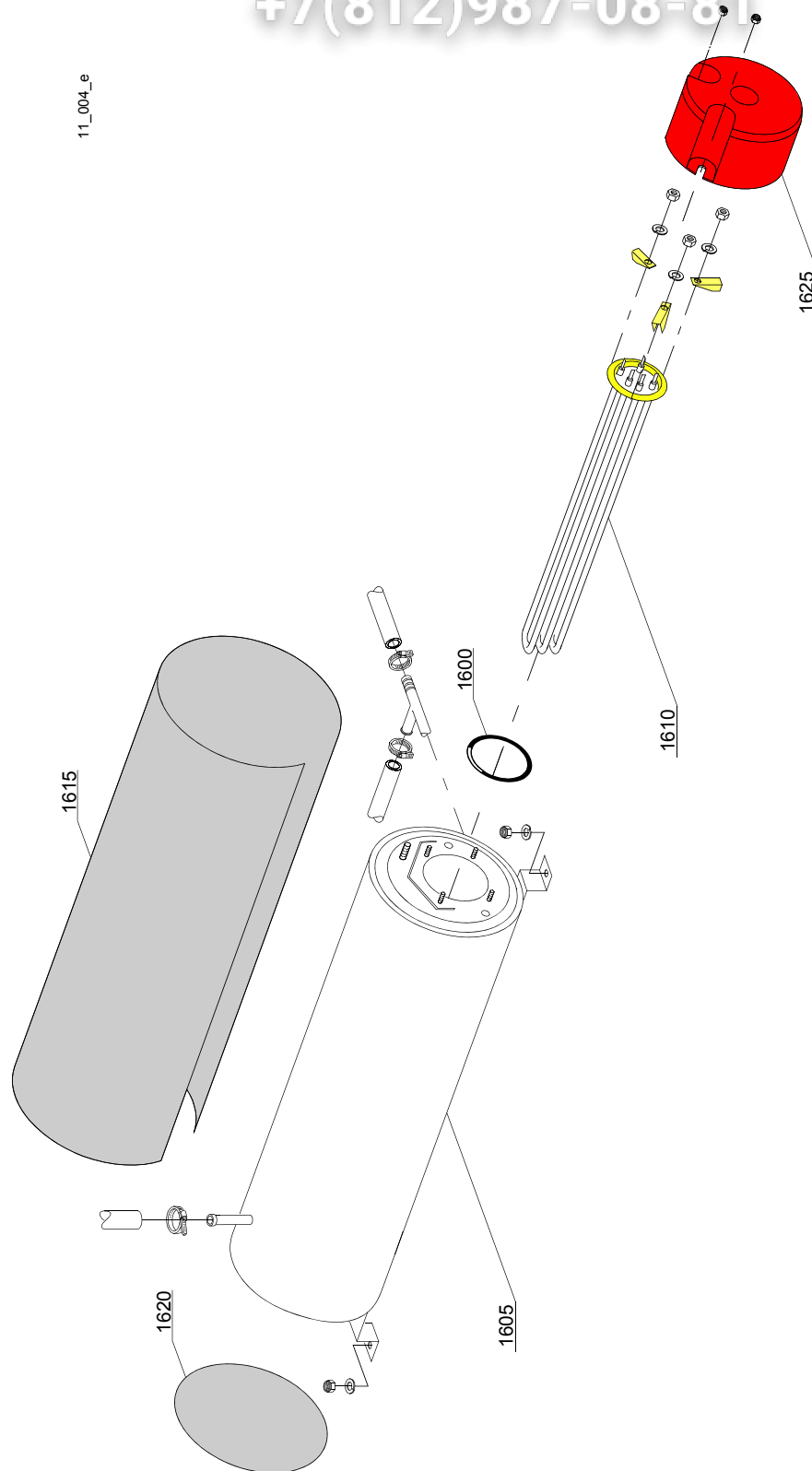
bt=BREAK TANK, bp=BOOSTER PUMP, dvgw=DVGW, ws=WATER SOFTNER, dd=DETERGENT DISPENSER, dp=DRAIN PUMP

A=3/N/PE~380-400V 50-60Hz, D=3/PE~200-210V 50-60Hz, F=2/PE~220-240V 50-60Hz, G=3/N/PE~415V 50-60Hz, H=3/PE~220-230V 50-60Hz, K=3/PE~380-400V 50-60Hz, L=3/PE~415V 50-60Hz, M=3/PE~440V 60Hz, P=1/N/PE~220-230V 50-60Hz, R=2/PE~220-240V 50-60Hz, U=1/N/PE~240V 50-60Hz, V=3/PE~240V 50-60Hz, W=1/N/PE~100-110V 50-60Hz

vsezip.ru

+7(812)987-08-81

11_004_e



| ID | P-code | SN from | SN to | Mod. | Acces. | Volt | Description |
|----------------------------|------------|---------|-------|------|--------|------|---------------------------------------|
| Module:Boiler group | | | | | | | |
| 1600 | 13015 | | - | | | | O-ring |
| 1605 | 22002 | | - | | | | Boiler |
| 1605 | 75927 | | - | | | | AISI 316 boiler |
| 1610 | 30001010 | | - | | | | 6/6,53KW 230/240/3 heating element |
| 1610 | 30001011 | | - | | | | Element 9kW |
| 1610 | 30001011/A | | - | | | | 12/13,07KW 230/240V 3 heating element |
| 1615 | 30002030 | | - | | | | Insulation boiler |
| 1620 | 75205 | | - | | | | Ø160 end piece |
| 1625 | 75311 | | - | | | | Heating element cover |

i=INSULATED HOOD, e=ELECTRONICAL CONTROL

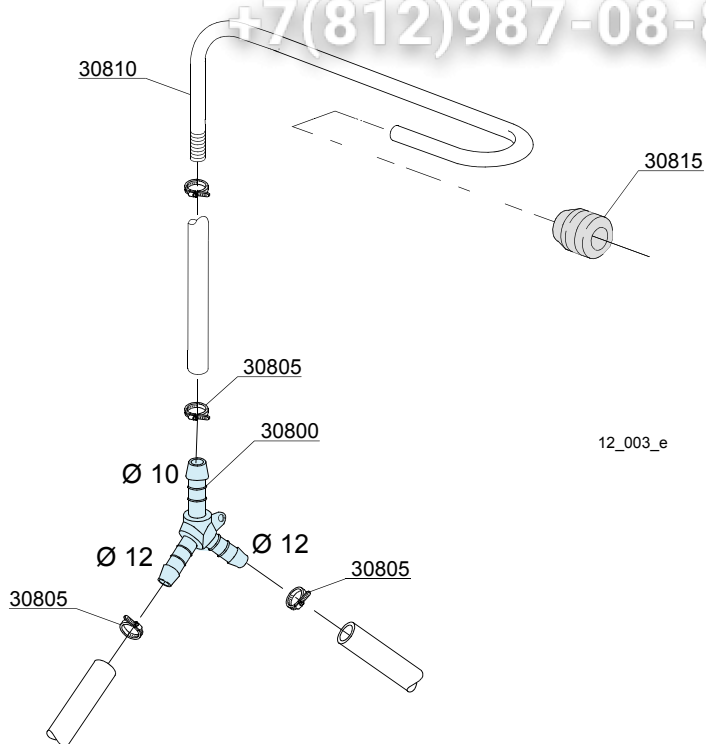
110E=110E

bt=BREAK TANK, bp=BOOSTER PUMP, dvgw=DVGW, ws=WATER SOFTNER, dd=DETERGENT DISPENSER, dp=DRAIN PUMP

A=3/N/PE~380-400V 50-60Hz, D=3/PE~200-210V 50-60Hz, F=2/PE~220-240V 50-60Hz, G=3/N/PE~415V 50-60Hz, H=3/PE~220-230V 50-60Hz, K=3/PE~380-400V 50-60Hz, L=3/PE~415V 50-60Hz, M=3/PE~440V 60Hz, P=1/N/PE~220-230V 50-60Hz, R=2/PE~220-240V 50-60Hz, U=1/N/PE~240V 50-60Hz, V=3/PE~240V 50-60Hz, W=1/N/PE~100-110V 50-60Hz

vsezip.ru

+7(812)987-08-81



vsezip.ru

| ID | P-code | SN from | SN to | Mod | Acces. | Volt | Description |
|---------------------------------|--------|---------|-------|-----|--------|------|--|
| Module:3 ways connection | | | | | | | |
| 30800 | 540104 | | - | i | | | Ø10-12-12 mm plastic 3 ways connection |
| 30805 | 11807 | | - | i | | | Clamp |
| 30810 | 76082 | | - | i | | | Rinse pipe |
| 30815 | 13304 | | - | i | | | Pipe |

i=INSULATED HOOD, e=ELECTRONICAL CONTROL

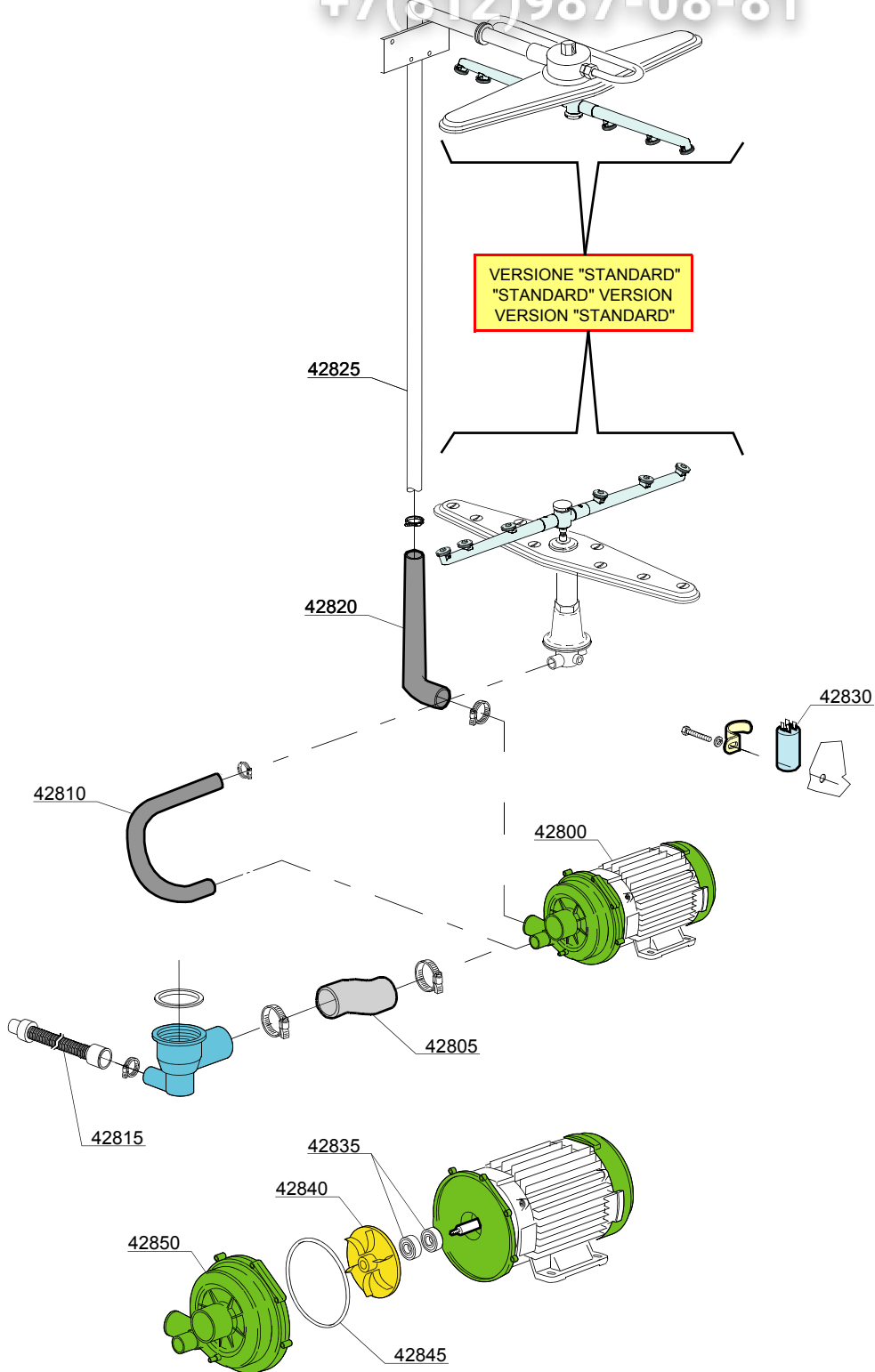
110E=110E

bt=BREAK TANK, bp=BOOSTER PUMP, dvgw=DVGW, ws=WATER SOFTNER, dd=DETERGENT DISPENSER, dp=DRAIN PUMP

A=3/N/PE~380-400V 50-60Hz, D=3/PE~200-210V 50-60Hz, F=2/PE~220-240V 50-60Hz, G=3/N/PE~415V 50-60Hz, H=3/PE~220-230V 50-60Hz, K=3/PE~380-400V 50-60Hz, L=3/PE~415V 50-60Hz, M=3/PE~440V 60Hz, P=1/N/PE~220-230V 50-60Hz, R=2/PE~220-240V 50-60Hz, U=1/N/PE~240V 50-60Hz, V=3/PE~240V 50-60Hz, W=1/N/PE~100-110V 50-60Hz

vsezip.ru

+7(812)987-08-81



13_124ce

vsezip.ru

| ID | P-code | SN from | SN to | Mod. | Acces. | Volt | Description |
|--------------------------------|----------|---------|-------|------|--------|------|----------------------------------|
| Module: Wash pump group | | | | | | | |
| 42800 | 22009 | | - | | | A | pump 1,5Hp/1,1kW 50Hz |
| 42800 | 22041 | | - | | | | pump 1,5Hp/1,1kW - 380/3Vac 50Hz |
| 42805 | 25032 | | - | | | | Suction pipe coupling |
| 42810 | 15033/A | | - | | | | Lower delivery wash pipe |
| 42815 | 10727 | | - | | | | Drain pipe |
| 42820 | 76078 | | - | | | | Top delivery pipe |
| 42825 | 11600103 | | - | | | | Wash ramp |
| 42830 | 15081/A | | - | | | | Condenser 16 uF |
| 42835 | 15080/E | | - | | | | Rotating seals |
| 42840 | 22009/A | | - | | | | Pump rotor |
| 42845 | 15080/A | | - | | | | O-ring |
| 42850 | 15078 | | - | | | | Scroll |

i=INSULATED HOOD, e=ELECTRONICAL CONTROL

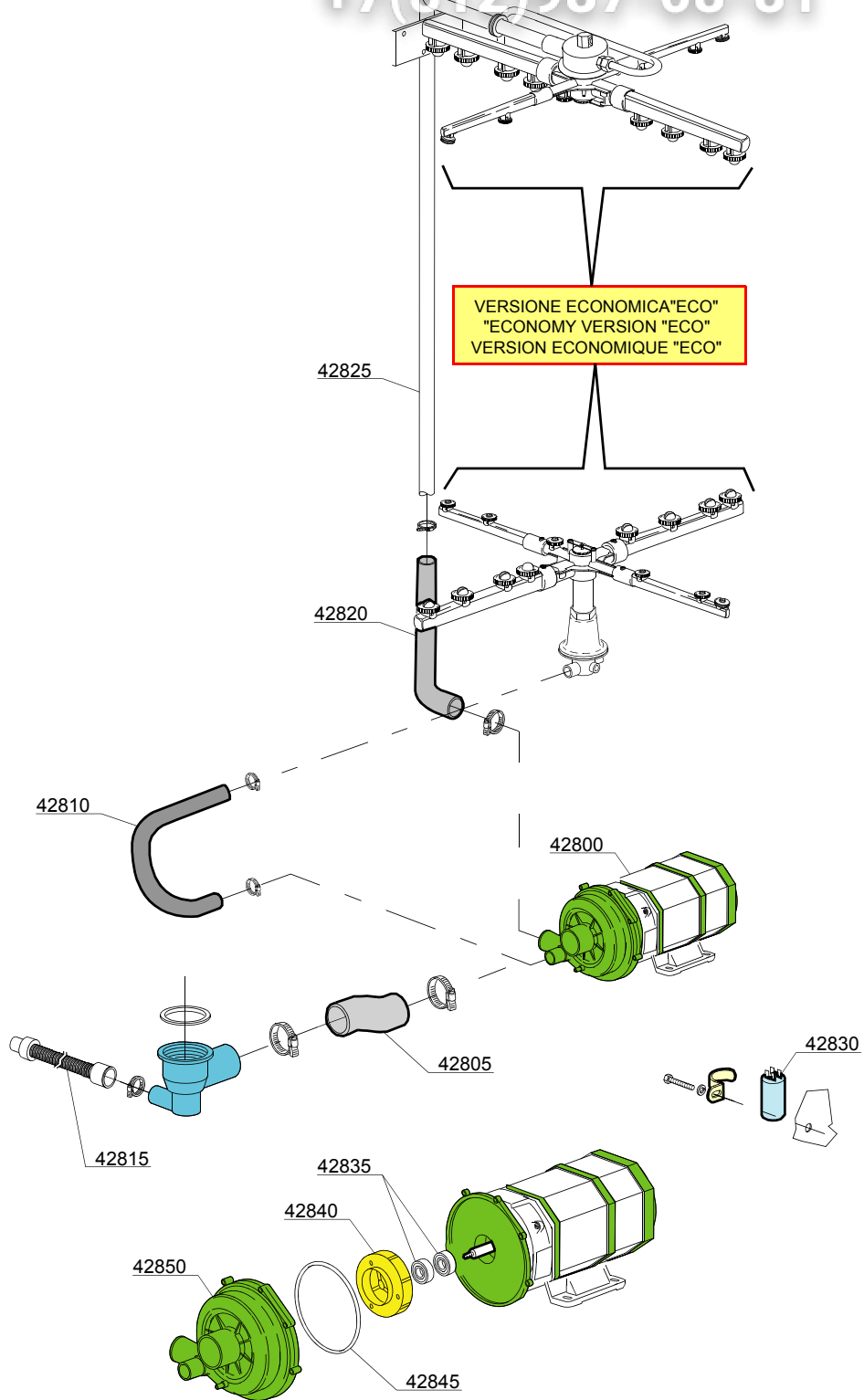
110E=110E

bt=BREAK TANK, bp=BOOSTER PUMP, dvgw=DVGW, ws=WATER SOFTNER, dd=DETERGENT DISPENSER, dp=DRAIN PUMP

A=3/N/PE~380-400V 50-60Hz, D=3/PE~200-210V 50-60Hz, F=2/PE~220-240V 50-60Hz, G=3/N/PE~415V 50-60Hz, H=3/PE~220-230V 50-60Hz, K=3/PE~380-400V 50-60Hz, L=3/PE~415V 50-60Hz, M=3/PE~440V 60Hz, P=1/N/PE~220-230V 50-60Hz, R=2/PE~220-240V 50-60Hz, U=1/N/PE~240V 50-60Hz, V=3/PE~240V 50-60Hz, W=1/N/PE~100-110V 50-60Hz

vsezip.ru

+7(812)987-08-81



13_124ae

vsezip.ru

| ID | P-code | SN from | SN to | Mod. | Acces. | Volt | Description |
|--------------------------------|----------|---------|-------|------|--------|------|----------------------------|
| Module: Wash pump group | | | | | | | |
| 42800 | 15913 | | - | | | | wash pump 1,2Hp/0,9kW 50Hz |
| 42805 | 25032 | | - | | | | Suction pipe coupling |
| 42810 | 15033/A | | - | | | | Lower delivery wash pipe |
| 42815 | 10727 | | - | | | | Drain pipe |
| 42820 | 76078 | | - | | | | Top delivery pipe |
| 42825 | 11600103 | | - | | | | Wash ramp |
| 42830 | 15081/A | | - | | | | Condenser 16 uF |
| 42835 | 15080/E | | - | | | | Rotating seals |
| 42840 | 15079/C | | - | | | | Closed Ø 110 Pump rotor |
| 42845 | 15080/A | | - | | | | O-ring |
| 42850 | 15078 | | - | | | | Scroll |

i=INSULATED HOOD, e=ELECTRONICAL CONTROL

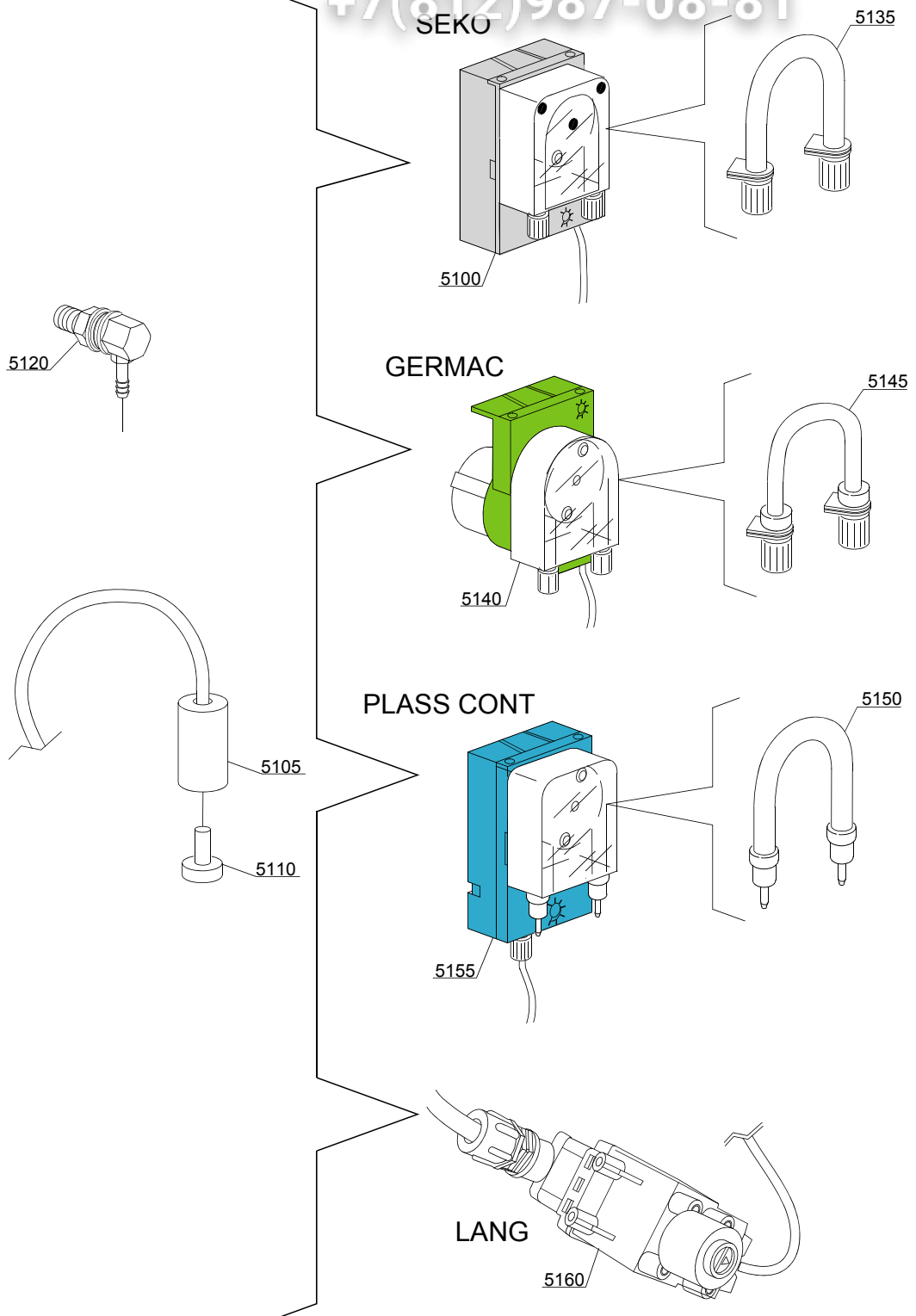
110E=110E

bt=BREAK TANK, bp=BOOSTER PUMP, dvgw=DVGW, ws=WATER SOFTNER, dd=DETERGENT DISPENSER, dp=DRAIN PUMP

A=3/N/PE~380-400V 50-60Hz, D=3/PE~200-210V 50-60Hz, F=2/PE~220-240V 50-60Hz, G=3/N/PE~415V 50-60Hz, H=3/PE~220-230V 50-60Hz, K=3/PE~380-400V 50-60Hz, L=3/PE~415V 50-60Hz, M=3/PE~440V 60Hz, P=1/N/PE~220-230V 50-60Hz, R=2/PE~220-240V 50-60Hz, U=1/N/PE~240V 50-60Hz, V=3/PE~240V 50-60Hz, W=1/N/PE~100-110V 50-60Hz

vsezip.ru

+7(812)987-08-81



14_004_e

| ID | P-code | SN from | SN to | Mod. | Acces. | Volt | Description |
|--------------------------------------|----------|---------|-------|------|--------|------|-----------------------------------|
| Module:Dosing detergent group | | | | | | | |
| 5100 | 15985 | | - | i | dd | | Seko detergent pump |
| 5105 | 12525 | | - | i | dd | | Counter-weight |
| 5110 | 15058 | | - | i | dd | | Small filter |
| 5120 | 15123 | | - | i | dd | | Complet Steel injector |
| 5125 | 15159 | | - | i | dd | | OR O-ring |
| 5130 | 10200205 | | - | i | dd | | M12x1 stainless steel nut |
| 5135 | 15185 | | - | i | dd | | Seko thermoplastic pipe Ø 10 |
| 5140 | 15985 | | - | i | dd | | Germac detergent pump |
| 5145 | 15108/E | | - | i | dd | | Germac thermoplastic pipe Ø 8 |
| 5150 | 15985/A | | - | i | dd | | Ø 10 PLAS CONT thermoplastic pipe |
| 5155 | 15985 | | - | i | dd | | PLAS CONT detergent pump |
| 5160 | 15108/L | | - | i | dd | | LANG detergent pump |

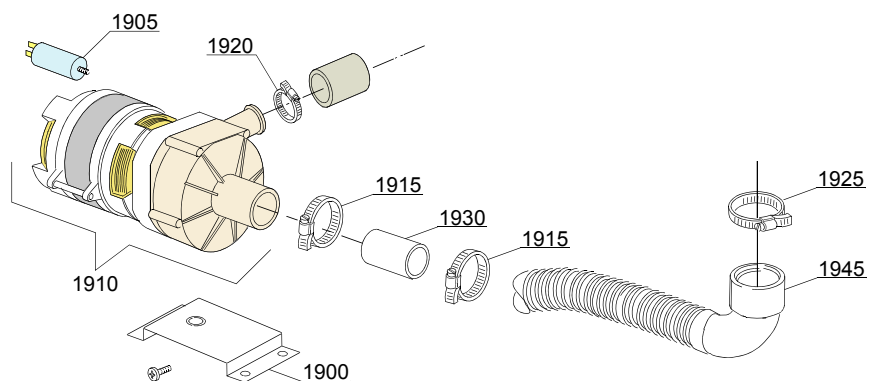
i=INSULATED HOOD, e=ELECTRONICAL CONTROL

110E=110E

bt=BREAK TANK, bp=BOOSTER PUMP, dvgw=DVGW, ws=WATER SOFTNER, dd=DETERGENT DISPENSER, dp=DRAIN PUMP

A=3/N/PE~380-400V 50-60Hz, D=3/PE~200-210V 50-60Hz, F=2/PE~220-240V 50-60Hz, G=3/N/PE~415V 50-60Hz, H=3/PE~220-230V 50-60Hz, K=3/PE~380-400V 50-60Hz, L=3/PE~415V 50-60Hz, M=3/PE~440V 60Hz, P=1/N/PE~220-230V 50-60Hz, R=2/PE~220-240V 50-60Hz, U=1/N/PE~240V 50-60Hz, V=3/PE~240V 50-60Hz, W=1/N/PE~100-110V 50-60Hz

15_003pe



vsezip.ru

| ID | P-code | SN from | SN to | Mod. | Acces. | Volt | Description |
|---------------------------------|---------|---------|-------|------|--------|------|------------------------------|
| Module: Drain pump group | | | | | | | |
| 1900 | 440122 | | - | | dp | | Pump support |
| 1905 | 10702 | | - | | dp | | 5 uF condenser |
| 1910 | 10501/A | | - | | dp | | Drain pump (extra equipment) |
| 1910 | 10501/D | | - | | dp | | Drain pump 80W 220V 60Hz |
| 1915 | 11806 | | - | | dp | | 25/40 clamp |
| 1920 | 11836 | | - | | dp | | 20/32 clamp |
| 1950 | 18044 | | - | | dp | | Ø 28 Top pipe |

i=INSULATED HOOD, e=ELECTRONICAL CONTROL

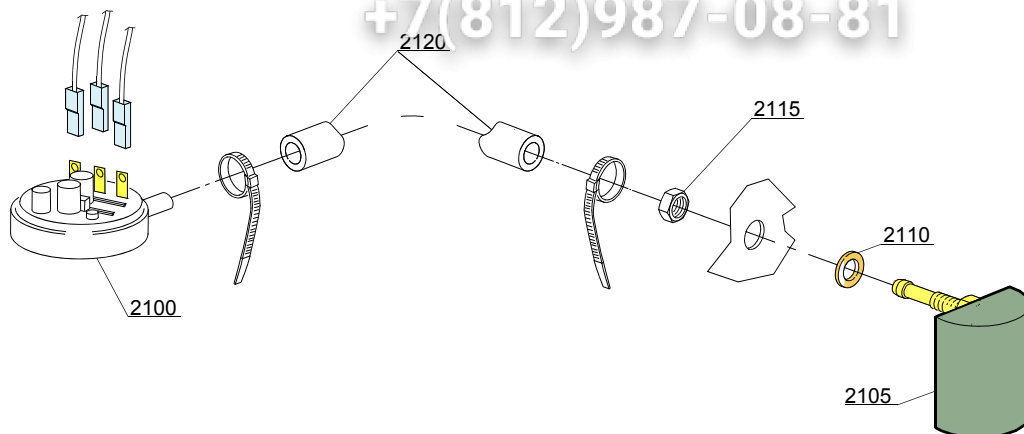
110E=110E

bt=BREAK TANK, bp=BOOSTER PUMP, dvgw=DVGW, ws=WATER SOFTNER, dd=DETERGENT DISPENSER, dp=DRAIN PUMP

A=3/N/PE~380-400V 50-60Hz, D=3/PE~200-210V 50-60Hz, F=2/PE~220-240V 50-60Hz, G=3/N/PE~415V 50-60Hz, H=3/PE~220-230V 50-60Hz, K=3/PE~380-400V 50-60Hz, L=3/PE~415V 50-60Hz, M=3/PE~440V 60Hz, P=1/N/PE~220-230V 50-60Hz, R=2/PE~220-240V 50-60Hz, U=1/N/PE~240V 50-60Hz, V=3/PE~240V 50-60Hz, W=1/N/PE~100-110V 50-60Hz

vsezip.ru

+7(812)987-08-81



16_001_e

| ID | P-code | SN from | SN to | Mod | Acces. | Volt | Description |
|--|----------|---------|-------|-----|--------|------|-----------------------|
| Module: Pressure switch group with air trap | | | | | | | |
| 2100 | 10706/A | | - | | | | Pressure switch 47-27 |
| 2100 | 75950 | | - | | | | Pressure switch PR |
| 2105 | 135911/B | | - | | | | Air trap |
| 2110 | 13301 | | - | i | | | Gasket |
| 2115 | 11702 | | - | i | | | Nut |

i=INSULATED HOOD, e=ELECTRONICAL CONTROL

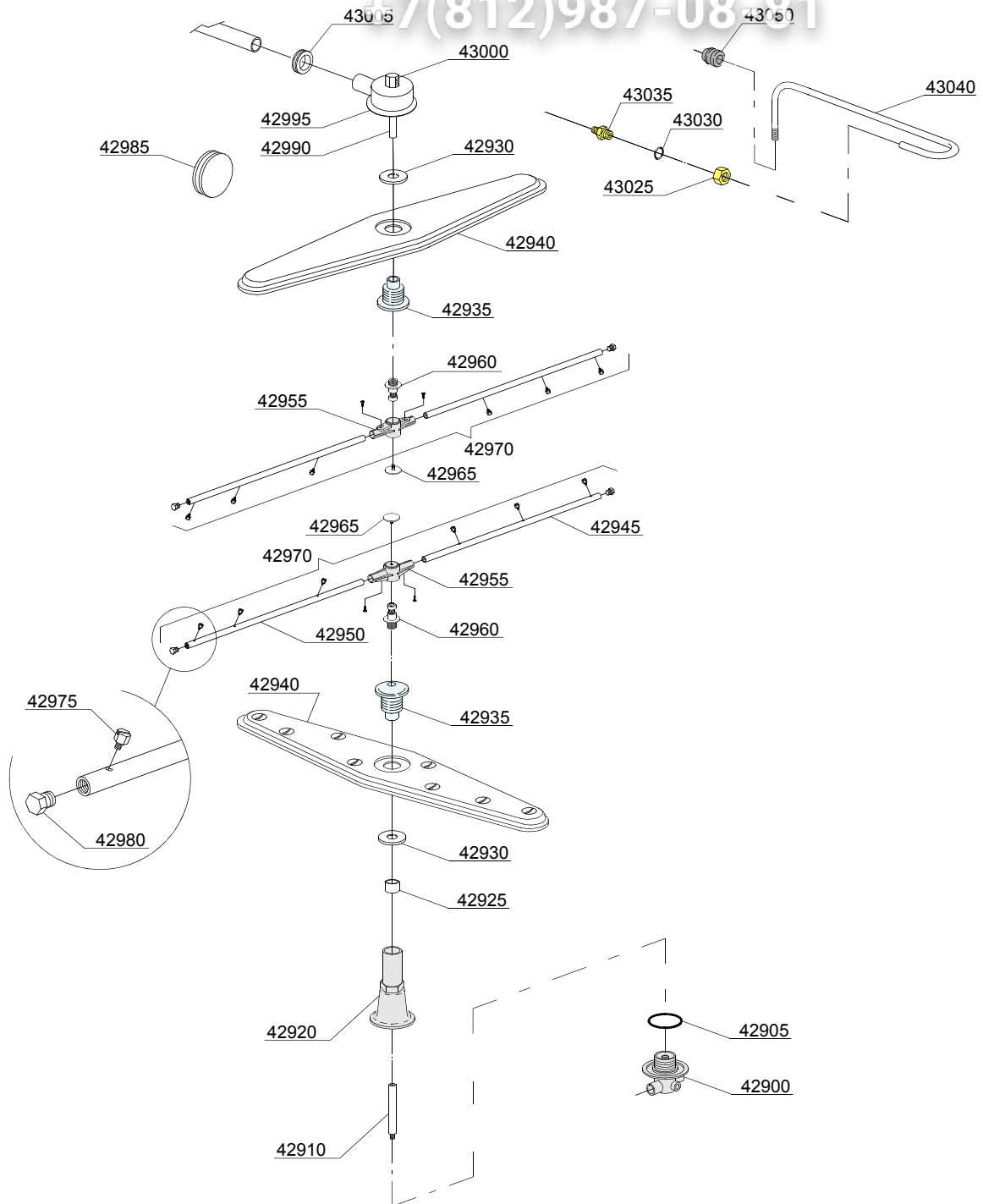
110E=110E

bt=BREAK TANK, bp=BOOSTER PUMP, dvgw=DVGW, ws=WATER SOFTNER, dd=DETERGENT DISPENSER, dp=DRAIN PUMP

A=3/N/PE~380-400V 50-60Hz, D=3/PE~200-210V 50-60Hz, F=2/PE~220-240V 50-60Hz, G=3/N/PE~415V 50-60Hz, H=3/PE~220-230V 50-60Hz, K=3/PE~380-400V 50-60Hz, L=3/PE~415V 50-60Hz, M=3/PE~440V 60Hz, P=1/N/PE~220-230V 50-60Hz, R=2/PE~220-240V 50-60Hz, U=1/N/PE~240V 50-60Hz, V=3/PE~240V 50-60Hz, W=1/N/PE~100-110V 50-60Hz

vsezip.ru

+7(812)987-08-81



17_129_e

| ID | P-code | SN from | SN to | Mod. | Acces. | Volt | Description |
|--|---------|---------|-------|------|--------|------|---|
| Module: Turret group with rotating arms | | | | | | | |
| 42900 | 500612 | | - | | | | Top/lower turret |
| 42905 | 13015 | | - | | | | 6225 OR 160 NBR O-ring |
| 42910 | 76079 | | - | | | | Rinse axle |
| 42920 | 76077 | | - | | | | Lower pipe coupling |
| 42925 | 75321 | | - | | | | Spacer for hub |
| 42930 | 75317 | | - | | | | Nut for wash arm bearing |
| 42935 | 75320 | | - | | | | Wash arm bearing |
| 42940 | 75915 | | - | | | | Stainless steel wash rotor |
| 42945 | 10657 | | - | | | | Right rinse arm - stainless steel nozzle |
| 42950 | 10658 | | - | | | | Left rinse arm - stainless steel nozzle |
| 42955 | 10650 | | - | | | | Rinse arm |
| 42960 | 10651 | | - | | | | Rinse axle |
| 42965 | 10652 | | - | | | | Rinse arm screw |
| 42970 | 75918 | | - | | | | Top/lower rinse arm complete |
| 42975 | 560018 | | - | | | | Stainless steel rinse nozzle |
| 42980 | 560017 | | - | | | | Rinse arm plug |
| 42985 | 13316/A | | - | | | | DVGW hole O-ring |
| 42990 | 75322 | | - | | | | Top rinse axle |
| 42995 | 75067 | | - | | | | Stainless steel turret |
| 43000 | 75319 | | - | | | | Rinse elbow |
| 43005 | 76081 | | - | | | | Pipe-pass O-ring 51x34x14 |
| 43025 | 12006/A | | - | | | | Ø10 pipe fitting 3/8x3,5 nut 19 hexagonal |
| 43030 | 13003 | | - | | | | OR 112 NBR O-ring |
| 43035 | 12006 | | - | | | | Ø10 rinse pipe fitting |
| 43040 | 76082 | | - | | | | Top rinse pipe |
| 43050 | 13304 | | - | | | | Pipe-pass O-ring |

i=INSULATED HOOD, e=ELECTRONICAL CONTROL

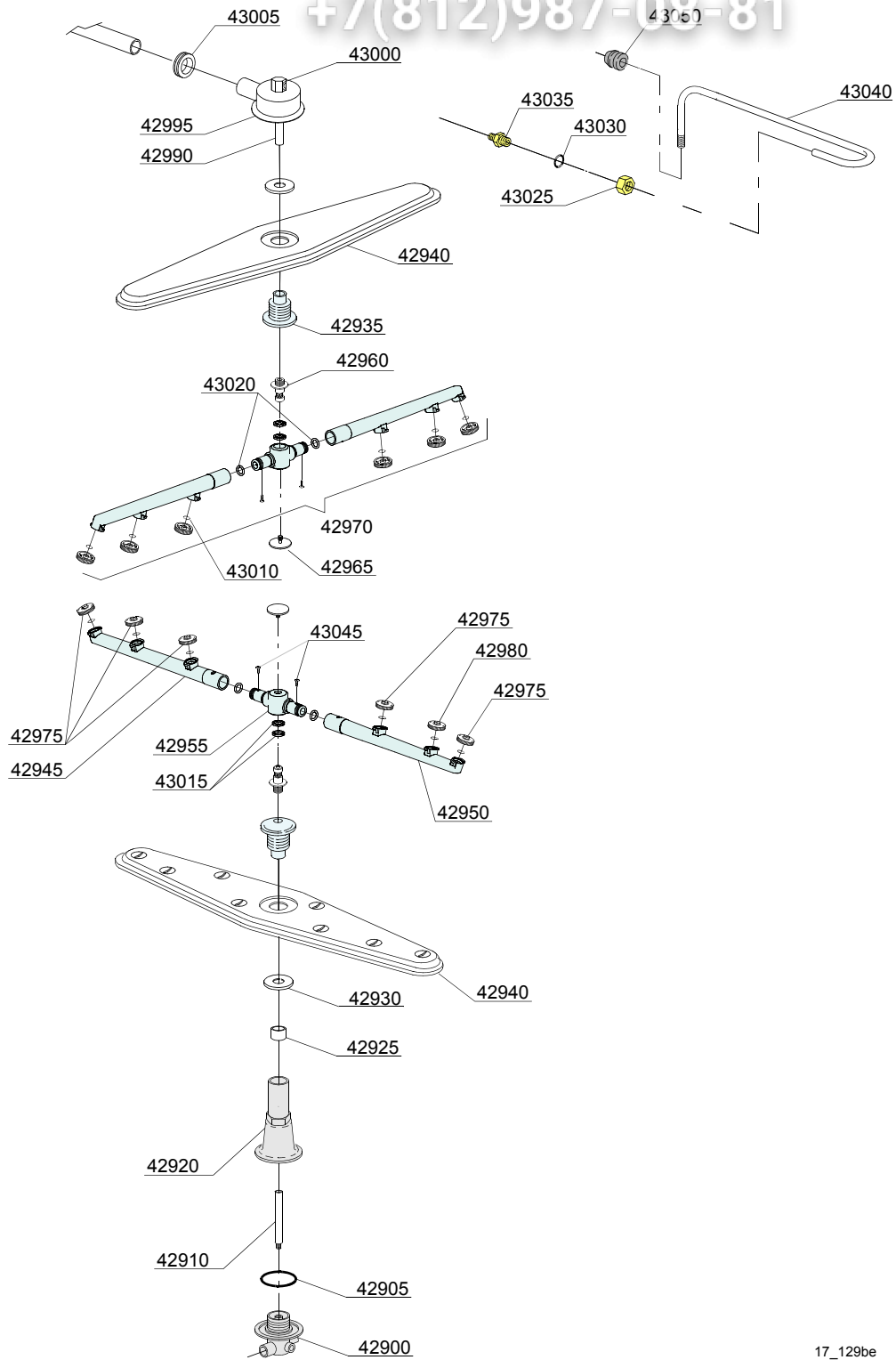
110E=110E

bt=BREAK TANK, bp=BOOSTER PUMP, dvgw=DVGW, ws=WATER SOFTNER, dd=DETERGENT DISPENSER, dp=DRAIN PUMP

A=3/N/PE~380-400V 50-60Hz, D=3/PE~200-210V 50-60Hz, F=2/PE~220-240V 50-60Hz, G=3/N/PE~415V 50-60Hz, H=3/PE~220-230V 50-60Hz, K=3/PE~380-400V 50-60Hz, L=3/PE~415V 50-60Hz, M=3/PE~440V 60Hz, P=1/N/PE~220-230V 50-60Hz, R=2/PE~220-240V 50-60Hz, U=1/N/PE~240V 50-60Hz, V=3/PE~240V 50-60Hz, W=1/N/PE~100-110V 50-60Hz

vsezip.ru

+7(812)987-08-81



17_129be

| ID | P-code | SN from | SN to | Mod. | Acces. | Volt | Description |
|---|---------|---------|-------|------|--------|------|---|
| Module:Turret group with rotating arms | | | | | | | |
| 42900 | 500612 | | - | | | | Top/lower turret |
| 42905 | 13015 | | - | | | | 6225 OR 160 NBR O-ring |
| 42910 | 76079 | | - | | | | Rinse axle |
| 42920 | 76077 | | - | | | | Lower pipe coupling |
| 42925 | 75321 | | - | | | | Spacer for hub |
| 42930 | 75317 | | - | | | | Nut for wash arm bearing |
| 42935 | 75320 | | - | | | | Wash arm bearing |
| 42940 | 75915 | | - | | | | Stainless steel wash rotor |
| 42945 | 75920/D | | - | | | | Right rinse arm - stainless steel nozzle |
| 42950 | 75920/S | | - | | | | Left rinse arm - stainless steel nozzle |
| 42955 | 75920/A | | - | | | | Rinse arm |
| 42960 | 10651 | | - | | | | Rinse axle |
| 42965 | 10652 | | - | | | | Rinse arm screw |
| 42970 | 75920 | | - | | | | Top/lower rinse arm complete |
| 42975 | 10371 | | - | | | | Open rinse nozzle |
| 42980 | 10372 | | - | | | | Closed rinse nozzle |
| 42990 | 75322 | | - | | | | Top rinse axle |
| 42995 | 75067 | | - | | | | Stainless steel turret |
| 43000 | 75319 | | - | | | | Rinse elbow |
| 43005 | 76081 | | - | | | | Pipe-pass O-ring 51x34x14 |
| 43010 | 13002 | | - | | | | OR R6 NBR O-ring (minimum 10 pieces) |
| 43015 | 75920/B | | - | | | | O ring for hub (rinse arm) |
| 43020 | 13002 | | - | | | | OR R6 NBR O-ring (minimum 10 pieces) |
| 43025 | 12006/A | | - | | | | Ø10 pipe fitting 3/8x3,5 nut 19 hexagonal |
| 43030 | 13003 | | - | | | | OR 112 NBR O-ring |
| 43035 | 12006 | | - | | | | Ø10 rinse pipe fitting |
| 43040 | 76082 | | - | | | | Top rinse pipe |
| 43045 | 11004 | | - | | | | 4x10 TCB Ø8 spax toothed screw |

i=INSULATED HOOD, e=ELECTRONICAL CONTROL

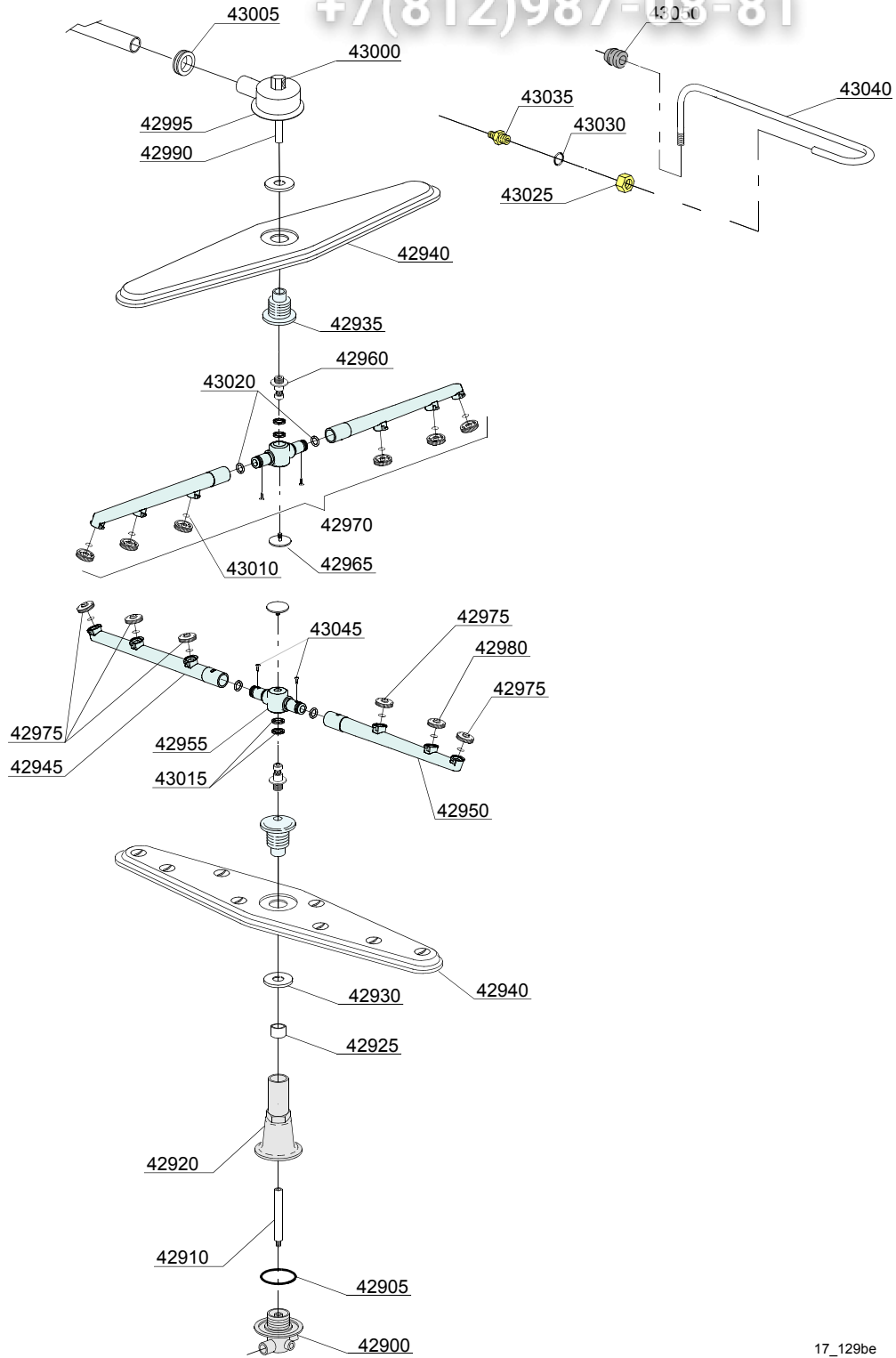
110E=110E

bt=BREAK TANK, bp=BOOSTER PUMP, dvgw=DVGW, ws=WATER SOFTNER, dd=DETERGENT DISPENSER, dp=DRAIN PUMP

A=3/N/PE~380-400V 50-60Hz, D=3/PE~200-210V 50-60Hz, F=2/PE~220-240V 50-60Hz, G=3/N/PE~415V 50-60Hz, H=3/PE~220-230V 50-60Hz, K=3/PE~380-400V 50-60Hz, L=3/PE~415V 50-60Hz, M=3/PE~440V 60Hz, P=1/N/PE~220-230V 50-60Hz, R=2/PE~220-240V 50-60Hz, U=1/N/PE~240V 50-60Hz, V=3/PE~240V 50-60Hz, W=1/N/PE~100-110V 50-60Hz

vsezip.ru

+7(812)987-08-81



17_129be

vsezip.ru

| ID | P-code | SN from | SN to | Mod. | Acces | Volt | Description |
|---|--------|---------|-------|------|-------|------|------------------|
| Module:Turret group with rotating arms | | | | | | | |
| 43050 | 13304 | | - | | | | Pipe-pass O-ring |

i=INSULATED HOOD, e=ELECTRONICAL CONTROL

110E=110E

bt=BREAK TANK, bp=BOOSTER PUMP, dvgw=DVGW, ws=WATER SOFTNER, dd=DETERGENT DISPENSER, dp=DRAIN PUMP

A=3/N/PE~380-400V 50-60Hz, D=3/PE~200-210V 50-60Hz, F=2/PE~220-240V 50-60Hz, G=3/N/PE~415V 50-60Hz, H=3/PE~220-230V 50-60Hz, K=3/PE~380-400V 50-60Hz, L=3/PE~415V 50-60Hz, M=3/PE~440V 60Hz, P=1/N/PE~220-230V 50-60Hz, R=2/PE~220-240V 50-60Hz, U=1/N/PE~240V 50-60Hz, V=3/PE~240V 50-60Hz, W=1/N/PE~100-110V 50-60Hz

| ID | P-code | SN from | SN to | Mod | Acces. | Volt | Description |
|---|---------|---------|-------|-----|--------|------|--|
| Module:Turret group with rotating arms | | | | | | | |
| 47250 | 500612 | | - | e | | | Top/lower turret |
| 47255 | 13015 | | - | e | | | 6225 OR 160 NBR O-ring |
| 47260 | 76084 | | - | e | | | Inferior rinse axle |
| 47265 | 15300 | | - | e | | | Ø10x51 lower/top rinse axle |
| 47266 | 76085 | | - | e | | | Top rinse axle |
| 47270 | 76077 | | - | e | | | Lower pipe coupling |
| 47275 | 76083 | | - | e | | | Stainless steel turret |
| 47280 | 75319 | | - | e | | | Rinse elbow |
| 47285 | 13304 | | - | e | | | Pipe-pass O-ring |
| 47290 | 12006 | | - | e | | | Ø10 rinse pipe fitting |
| 47295 | 13003 | | - | e | | | OR 112 NBR O-ring |
| 47300 | 12006/A | | - | e | | | Ø10 pipe fitting 3/8x3,5 nut 19 hexagonal |
| 47305 | 76082 | | - | e | | | Top rinse pipe |
| 47310 | 13316/A | | - | e | | | DVGW hole O-ring |
| 47315 | 13319 | | - | e | | | Sliding washer (minimum 4 pieces) |
| 47320 | 11101/I | | - | e | | | Stainless steel group fixing screw |
| 47325 | 10260 | | - | e | | | Blocking ring nut rotor plaque (minimum 10 pieces) |
| 47330 | 11004 | | - | e | | | 4x10 TCB Ø8 spax toothed screw |
| 47335 | 50755 | | - | e | | | Under / upper turret wash rotor |
| 47340 | 11004 | | - | e | | | 4x10 TCB Ø8 spax toothed screw |
| 47345 | 500751 | | - | e | | | Right rinse arm |
| 47350 | 500752 | | - | e | | | Left rinse arm |
| 47355 | 500753 | | - | e | | | Right wash pipe |
| 47360 | 500754 | | - | e | | | Left wash pipe |
| 47365 | 13002 | | - | e | | | OR R6 NBR O-ring (minimum 10 pieces) |
| 47370 | 13025 | | - | e | | | OR 2081 O-ring (minimum 10 pieces) |
| 47375 | 13009 | | - | e | | | OR 2050 NBR O-ring (minimum 10 pieces) |
| 47380 | 10369 | | - | e | | | Opened wash nozzle (minimum 2 pieces) |

i=INSULATED HOOD, e=ELECTRONICAL CONTROL

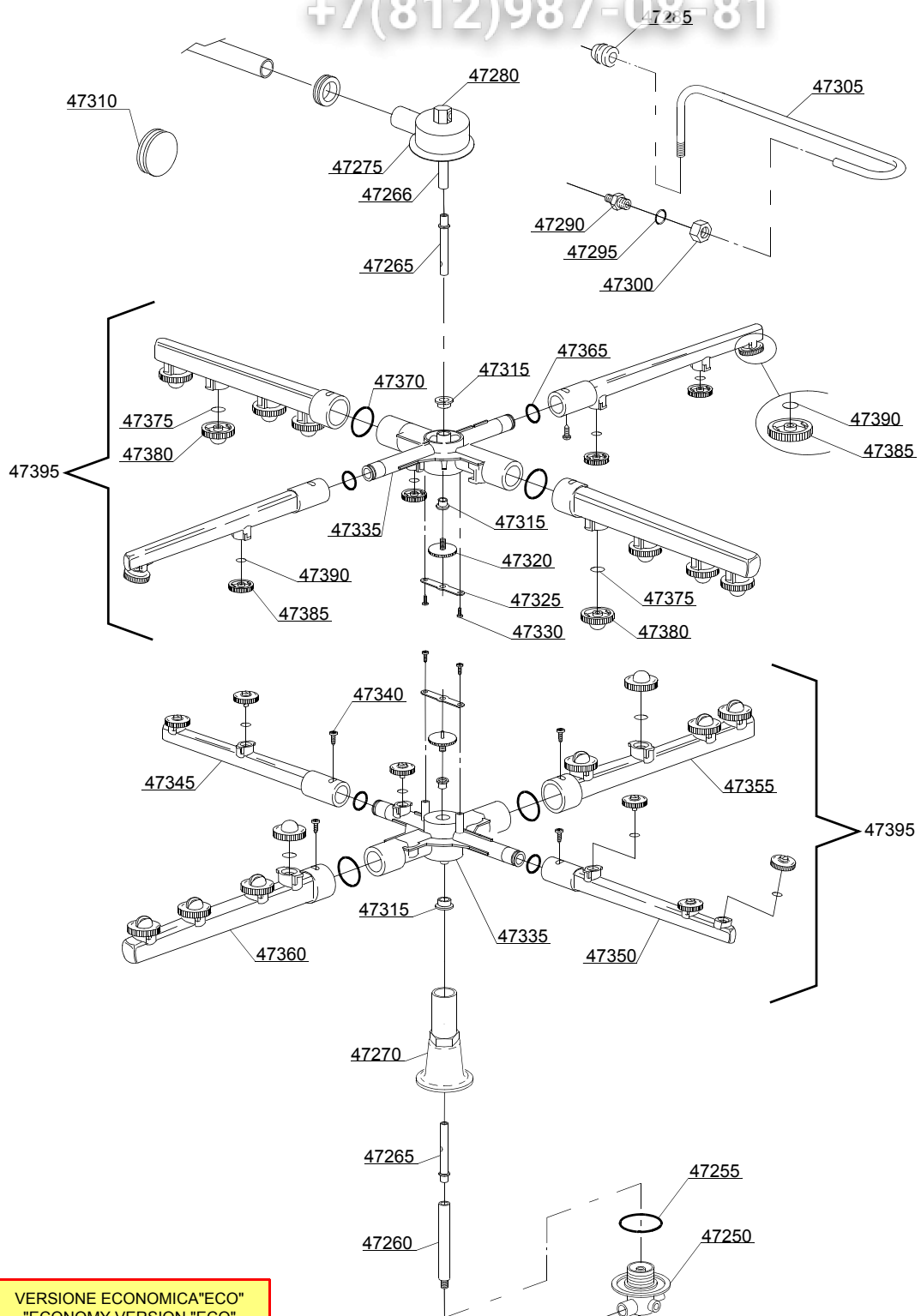
110E=110E

bt=BREAK TANK, bp=BOOSTER PUMP, dvgw=DVGW, ws=WATER SOFTNER, dd=DETERGENT DISPENSER, dp=DRAIN PUMP

A=3/N/PE~380-400V 50-60Hz, D=3/PE~200-210V 50-60Hz, F=2/PE~220-240V 50-60Hz, G=3/N/PE~415V 50-60Hz, H=3/PE~220-230V 50-60Hz, K=3/PE~380-400V 50-60Hz, L=3/PE~415V 50-60Hz, M=3/PE~440V 60Hz, P=1/N/PE~220-230V 50-60Hz, R=2/PE~220-240V 50-60Hz, U=1/N/PE~240V 50-60Hz, V=3/PE~240V 50-60Hz, W=1/N/PE~100-110V 50-60Hz

vsezip.ru

+7(812)987-08-81



vsezip.ru

| ID | P-code | SN from | SN to | Mod. | Acces. | Volt | Description |
|---|--------|---------|-------|------|--------|------|---|
| Module:Turret group with rotating arms | | | | | | | |
| 47385 | 10371 | | - | e | | | Rinse nozzle |
| 47390 | 13002 | | - | e | | | OR R6 NBR O-ring (minimum 10 pieces) |
| 47395 | 500750 | | - | e | | | Grey wash/rinse lower/upper distributor |

i=INSULATED HOOD, e=ELECTRONICAL CONTROL

110E=110E

bt=BREAK TANK, bp=BOOSTER PUMP, dvgw=DVGW, ws=WATER SOFTNER, dd=DETERGENT DISPENSER, dp=DRAIN PUMP

A=3/N/PE~380-400V 50-60Hz, D=3/PE~200-210V 50-60Hz, F=2/PE~220-240V 50-60Hz, G=3/N/PE~415V 50-60Hz, H=3/PE~220-230V 50-60Hz, K=3/PE~380-400V 50-60Hz, L=3/PE~415V 50-60Hz, M=3/PE~440V 60Hz, P=1/N/PE~220-230V 50-60Hz, R=2/PE~220-240V 50-60Hz, U=1/N/PE~240V 50-60Hz, V=3/PE~240V 50-60Hz, W=1/N/PE~100-110V 50-60Hz