

Зип Ощепит

vsezip.ru

+7(812)987-08-81

HOOD TYPE MACHINE

INSULATED HOOD
ELECTROMECHANICAL SWITCHES

TYPE: 110H

Accessories

BREAK TANK

BOOSTER PUMP

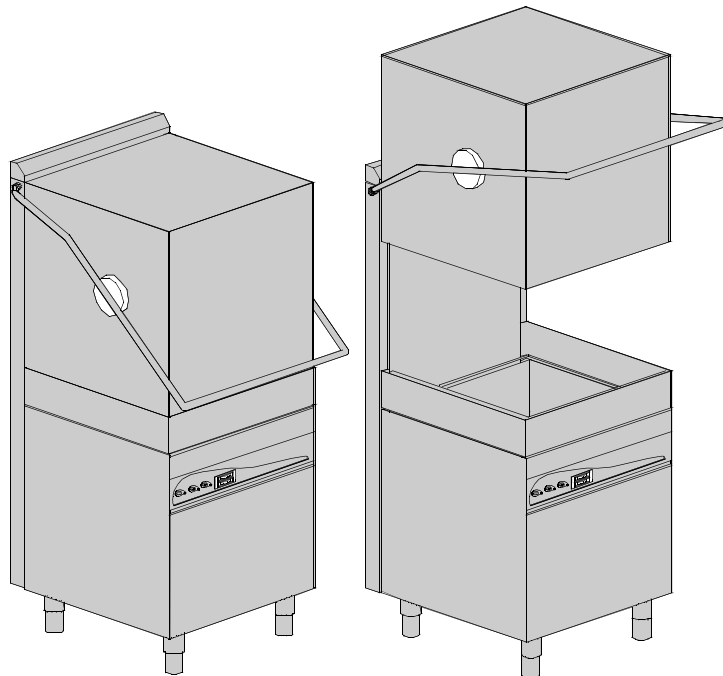
DVGW

WATER SOFTNER

DETERGENT DISPENSER

DRAIN PUMP

Spare parts manual



INFORMAZIONI GENERALI

Questo catalogo serve per richiedere con esattezza le parti di ricambio

Nelle ordinazioni indicare:

1) il numero dei codici dei particolari seguito dalla descrizione e la quantità desiderata;

2) Il codice alfa-numerico presente nella seconda colonna della tabella ;

I disegni delle parti di ricambio sono solo indicativi e non rappresentano il pezzo in oggetto.

I dati contenuti in questo catalogo sono indicativi e possono essere soggetti a modifiche senza impegno di preavviso.

ALLGEMEINE INFORMATIONEN

Dieser Ersatzteilkatalog dient zur genauen Angabe der Teile bei Ersatzteilbestellungen.

Bei Ersatzbestellung ist folgendes anzugeben:

1) Die Bestellnummer der Ersatzteile mit der entsprechenden Beschreibung genaue Menge;

2) Der alpha-numerischer Code auf der zweiten Reihe in dein S clud;

Die Zeichnungen der Ersatzteile sind nur als Hinweise gedacht und stellen nicht das betroffene Teil dar.

Bei den im Katalog angeführten Daten handelt es sich um Anhaltsdaten, die jederzeit, ohne Vorankündigung, geändert werden können.

GENERAL INFORMATION

The present spare parts order exactly the right spare parts

When ordering specify:

1) the part's code number followed by its description and quantity needed;

2) The alpha-numeric code is in the second column in the chart;

Spare parts drawings are general and do not represent the part.

The contents of this catalogue are general and can undergo changes without prior notice.

INFORMACIONES GENERALES

El presente catálogo sirve para pedir con exactitud las partes de repuesto

En los pedidos se debe indicar:

1) el número de código de la parte y a continuación la descripción cantidad deseada;

2) El código alfanumerico presente en la segnada columna de la tabla;

Los diseños de las partes de recambio son solo indicativos y no representan la pieza en cuestión.

Los datos contenidos en el presente catálogo son indicativos y pueden modificarse sin aviso previo.

INFORMATIONS GENERALES

Ce catalogue permet de commander correctement les pièces détachées

Les commandes doivent être passés en indiquant:

1) le numero de code des pièces détachés suivi de leur description quantité;

2) le code alphanumérique dans la deuxième colonne du tableau;

Les plans des pièces détachées sont fournis seulement à titre indicatif et ne représentent pas la pièce concernée.

Les données de ce catalogue sont citées seulement à titre indicatif et peuvent être l'objet de modifications sans avis préalable.

ESEMPIO
EXAMPLE
EXEMPLE
BEISPIEL

| Rif. | Codici |
|--------------------|---------|
| MODULE:Particolari | |
| 10505 | 540903 |
| 10510 | 540908 |
| 10515 | 15065/A |
| 10520 | 540086 |
| 10525 | 540028 |

 Note

Tutte le informazioni riportate si intendono aggiornate alla data di stampa. Il Produttore si riserva il diritto di apportare qualsiasi modifica richiesta dallo sviluppo evolutivo dei suddetti prodotti.

Per la sicurezza, la garanzia, l'affidabilità ed il valore della lavastoviglie usa solo ricambi originali.

 Attenzione

Questo libretto è parte integrante della lavastoviglie e, in caso di passaggio di proprietà, deve essere consegnato al nuovo acquirente.

 Note

The information contained herein is valid at the time of going to print. The Company reserves the right to make any changes required by the future development of the above-mentioned products.

For your safety, as well as to preserve the warranty reliability and worth of your dishwashers, use original spare parts only.

 Warning

This manual forms an integral part of the dishwashers and - if a transfer of title occurs - must always be handed over to the new owner.

 Remarque

Toutes les informations contenues dans ce manuel s'entendent mises à jour à la date d'impression. En raison du développement constant de ses produits, usine se réserve le droit d'apporter à tout instant les modifications qu'elle jugera utiles.

Pour la sécurité, la garantie, la fiabilité et la valeur de votre lavevaisselles n'utilisez que des pièces de rechange d'origine.

 Attention

Ce manuel doit être considéré comme partie intégrante de la lavevaisselles, en cas de transfert de propriété, doit toujours être remis au nouveau propriétaire.

 Hinweis

Die Der Hersteller behält sich das Recht vor, jegliche, durch eine Weiterentwicklung der genannten Produkte bedingte Änderungen vornehmen zu können.

Verwenden Sie für Ihre Sicherheit, die Garantie, die Zuverlässigkeit und den Wert Ihrer machine originale Ersatzteile.

 Achtung

Diese Betriebsanleitung ist Bestandteil des machine und muss bei seinem Weiterverkauf dem neuen Besitzer ausgehändigt werden.

vsezip.ru

+7(812)987-08-81

1. Spare parts

| | |
|----------------------------------|----|
| General body parts..... | 7 |
| Closing panelig..... | 9 |
| Hood insulation..... | 11 |
| Control panel and switches..... | 13 |
| Control panel and switches..... | 15 |
| Electric control components..... | 17 |
| Solenoid valve group | 19 |
| Solenoid valve group | 21 |
| Break Tank | 23 |
| Booster pump..... | 25 |
| DVGW | 27 |
| Water softner group..... | 29 |
| Rinse aid dispenser group..... | 31 |
| Boiler group | 33 |
| 3 ways connection | 35 |
| Connection group | 37 |

Wash pump group.....39

Dosing detergent group.....41

Dosing detergent group..... 43

Drain pump group..... 45

Pressure switch group with air trap ...47

Turret group with rotating arms 49

1.1 Voltage codes

| Voltage code | Voltage |
|--------------|----------------------|
| A | 3/N/PE~400/230V 50Hz |
| B | ~250V 16A 50Hz |
| C | 3/N/PE~380/220V 50Hz |
| D | 3/PE~200V 50-60Hz |
| F | 2/PE 220-240V 50Hz |
| G | 3/N/PE~415/240V 50Hz |
| H | 3/PE~230V 50Hz |
| I | 3/PE~220V 60Hz |
| J | 3/PE~380 50Hz |
| K | 3/PE~400V 50Hz |
| L | 3/PE~415V 50Hz |
| M | 3/PE~440V 60Hz |
| N | 3/PE~460V 60Hz |
| O | 3/PE~480V 60Hz |
| P | 1/N/PE~220-240V 50Hz |
| R | 2/PE~220-230V 60Hz |
| S | 3/N/PE~400/230V 50Hz |
| T | 3/PE~230V 60Hz |

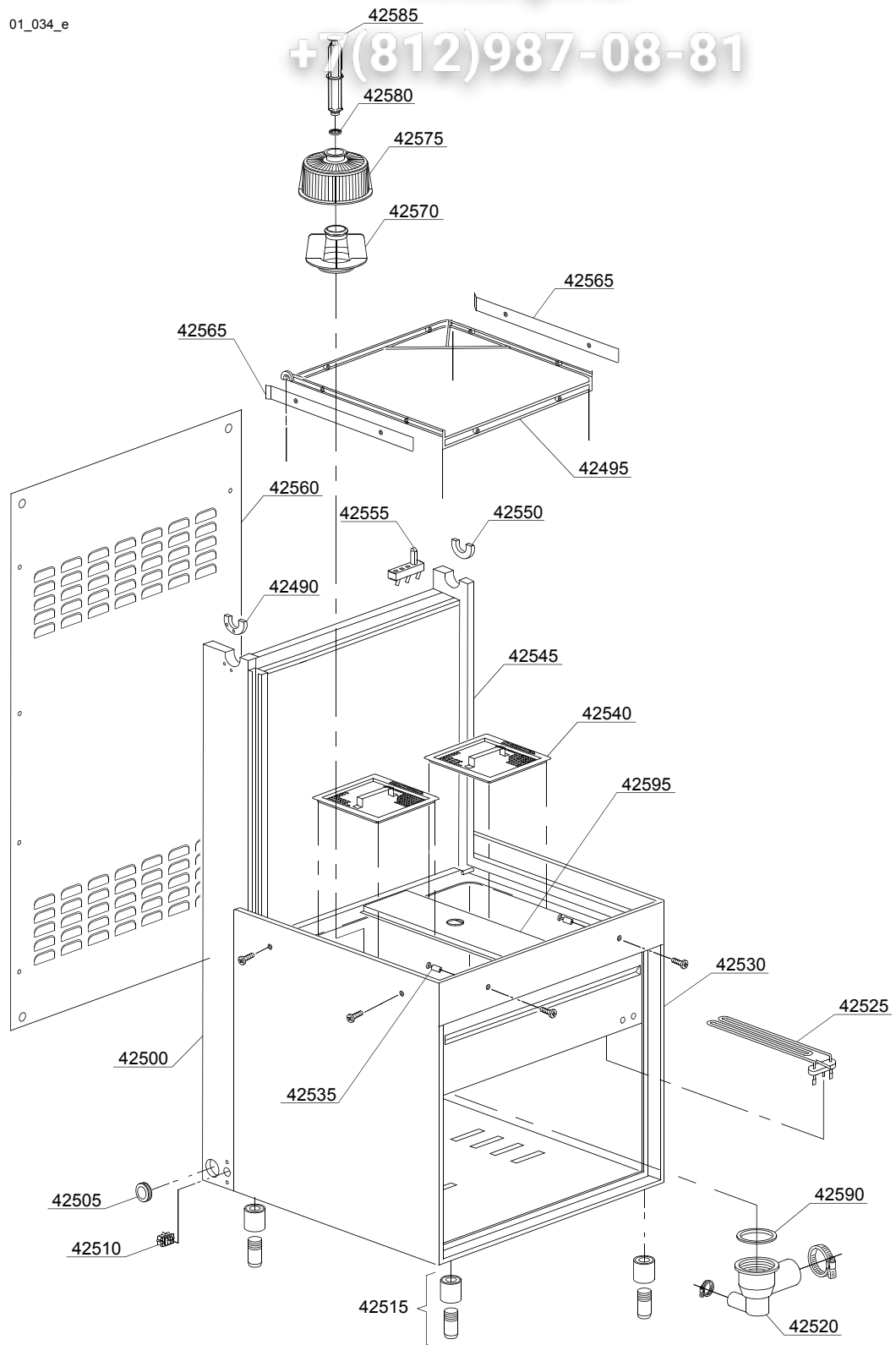
1.2 Product codes

| Product code | Full name |
|-----------------|----------------------------|
| Model codes | |
| is | INSULATED HOOD |
| em | ELECTROMECHANICAL SWITCHES |
| Type codes | |
| 110H | 110H |
| Accessory codes | |
| bt | BREAK TANK |
| pap | BOOSTER PUMP |
| dvgw | DVGW |
| d | WATER SOFTNER |
| dde | DETERGENT DISPENSER |
| ps | DRAIN PUMP |

vsezip.ru

+7(812)987-08-81

01_034_e



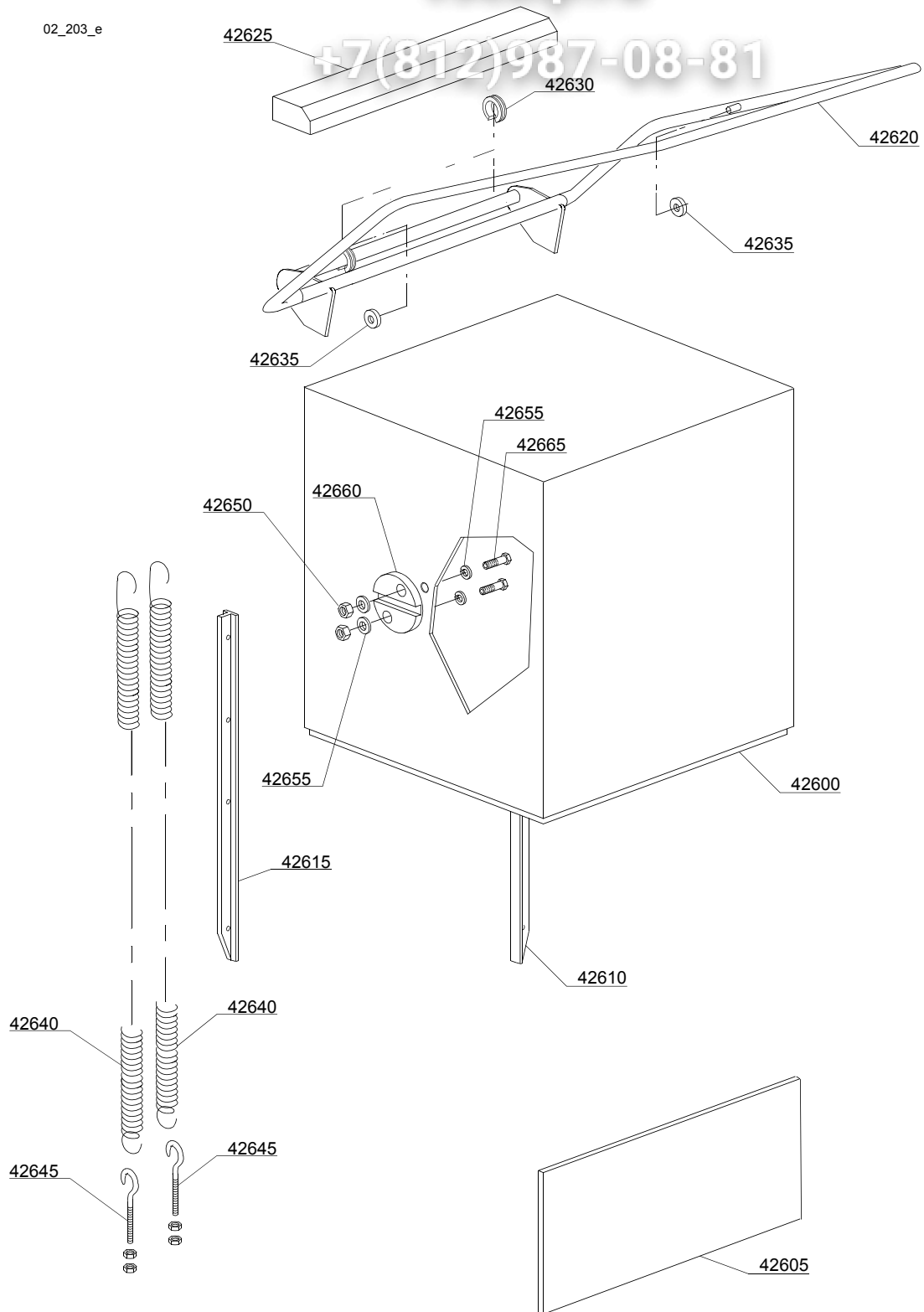
vsezip.ru

| ID | P-code | Model | Type | Accessory | Voltage | Description |
|---------------------------|----------|-------|------|-----------|---------|-------------------------------------|
| MODULE:General body parts | | | | | | |
| 42490 | 11600055 | | 110H | | | Right/left slide bearing |
| 42495 | 11600001 | | 110H | | | Rack frame |
| 42500 | 11600621 | | 110H | | | Left guide rail support |
| 42505 | 13324 | | 110H | | | Cable screw cap |
| 42510 | 15065/A | | 110H | | | Cable-fastener with screw |
| 42515 | 15116 | | 110H | | | Foot |
| 42520 | 500606 | | 110H | | | Right side scrap tray |
| 42525 | 150047 | | 110H | | | 2,7/2,94KW 230/240V heating element |
| 42530 | 76000 | | 110H | | | Frame assembly |
| 42535 | 11600018 | | 110H | | | Basket support holder pin |
| 42540 | 11600907 | | 110H | | | Strainer plate |
| 42545 | 11600620 | | 110H | | | Right guide rail support |
| 42550 | 11600055 | | 110H | | | Right/left slide bearing |
| 42555 | 70305 | | 110H | | | Hood switch |
| 42560 | 11600630 | | 110H | | | Back panel |
| 42565 | 10600923 | | 110H | | | Guide rail |
| 42570 | 500615 | | 110H | | | Ferrule with filter |
| 42575 | 500616 | | 110H | | | Suction filter |
| 42580 | 13021 | | 110H | | | DEM 40 O-ring |
| 42585 | 500619 | | 110H | | | Overflow pipe |
| 42590 | 80208 | | 110H | | | 95x75x3 O-ring |
| 42595 | 76007 | | 110H | | | Sleeper holder-filter |
| | | | | | | |
| | | | | | | |
| | | | | | | |
| | | | | | | |

vsezip.ru

+7(812)987-08-81

02_203_e



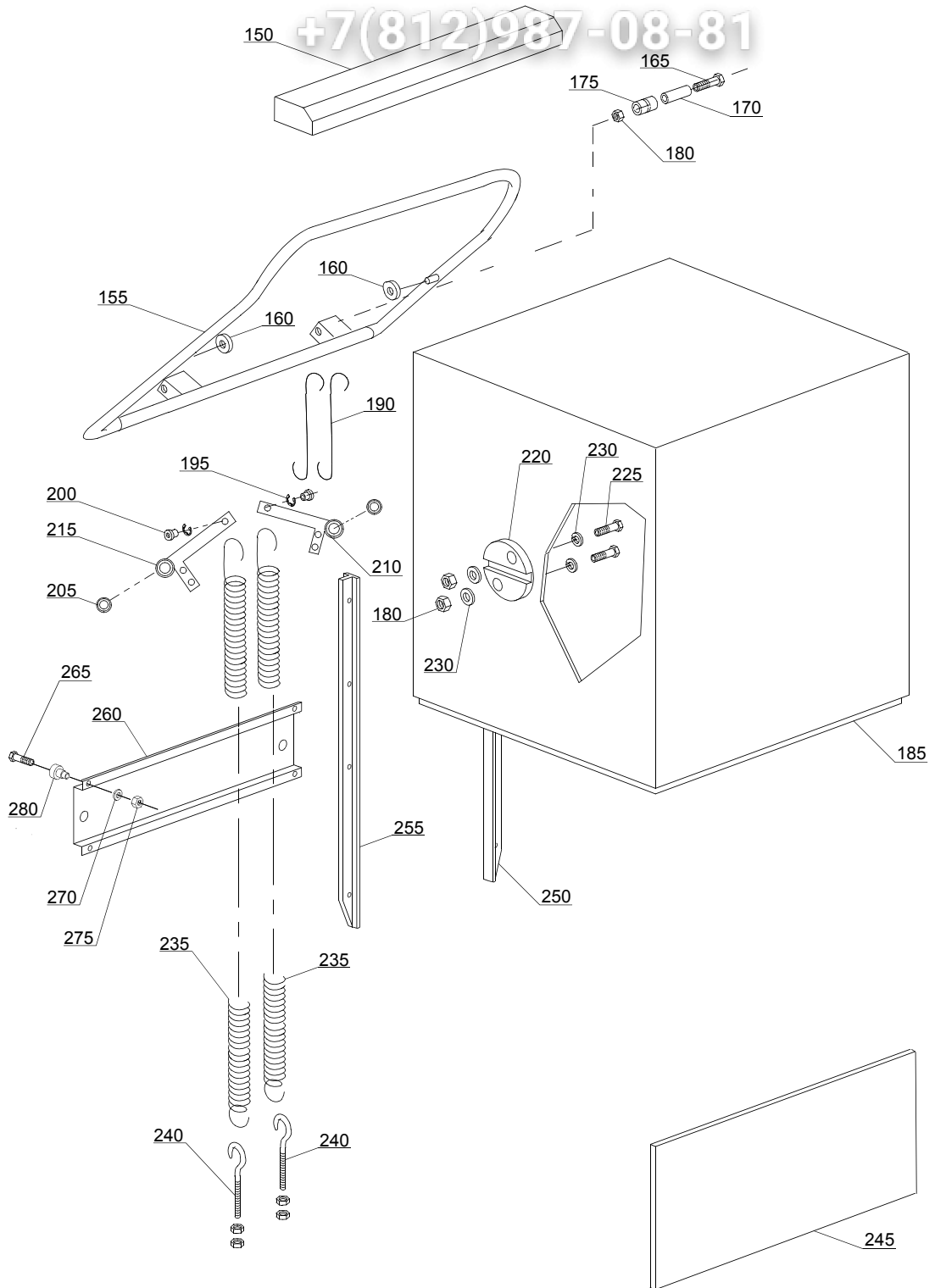
vsezip.ru

| ID | P-code | Model | Type | Accessory | Voltage | Description |
|------------------------|----------|-------|------|-----------|---------|-------------------------------------|
| MODULE:Closing panelig | | | | | | |
| 42600 | 76001 | | 110H | | | Hood, complete |
| 42605 | 76003 | | 110H | | | Front plate |
| 42610 | 76080 | | 110H | | | Guide |
| 42615 | 76080 | | 110H | | | Guide |
| 42620 | 76075 | | 110H | | | Handle |
| 42625 | 11600913 | | 110H | | | Guide |
| 42630 | 70306 | | 110H | | | Spring hook joint |
| 42635 | 89919 | | 110H | | | Bearing |
| 42640 | 75303 | | 110H | | | Hood spring |
| 42645 | 10800210 | | 110H | | | Hook screw |
| 42650 | 11718 | | 110H | | | M8 stainless steel self-locking nut |
| 42655 | 13301 | | 110H | | | Gasket |
| 42660 | 11600036 | | 110H | | | Bearing holder |
| 42665 | 11216 | | 110H | | | Inox screw M8x35 TE |

vsezip.ru

+7(812)987-08-81

02_202_e

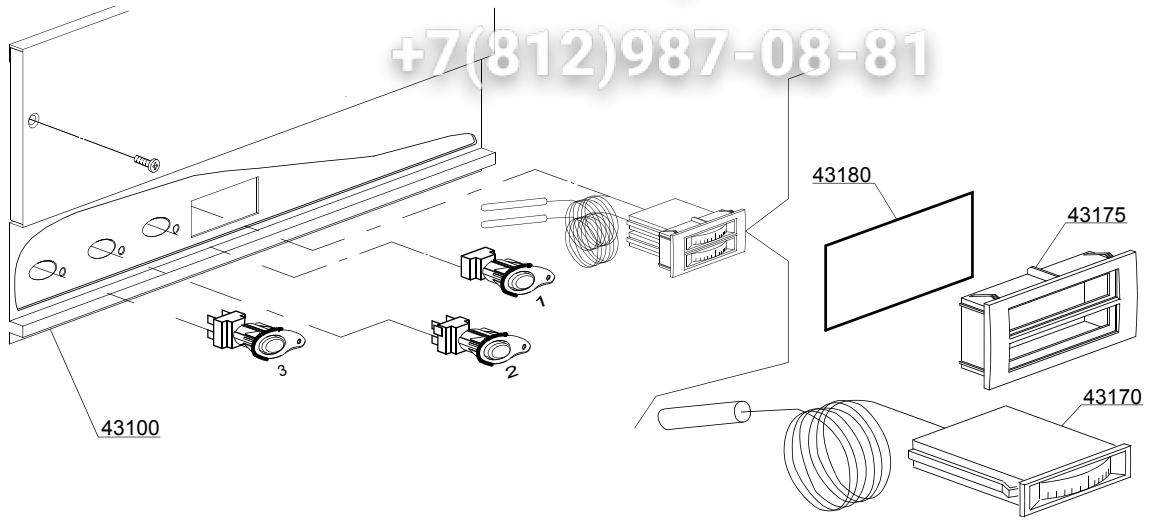


vsezip.ru

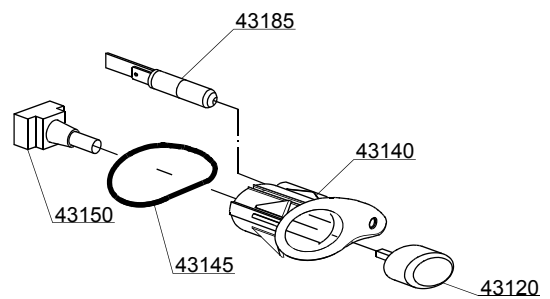
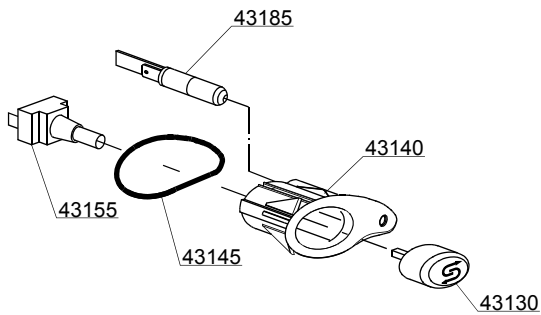
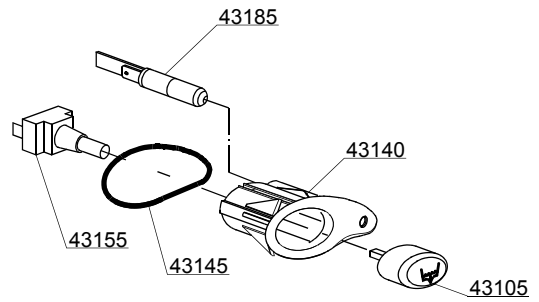
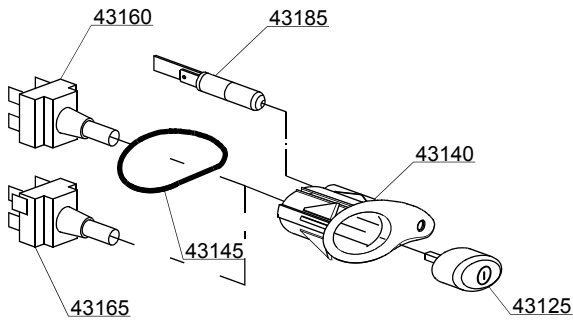
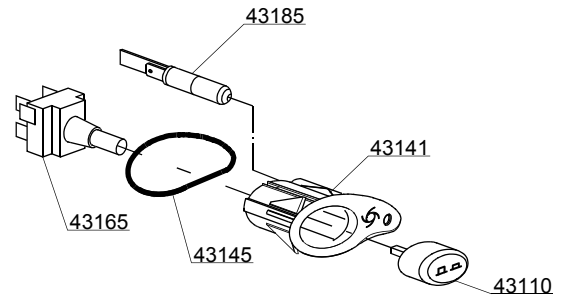
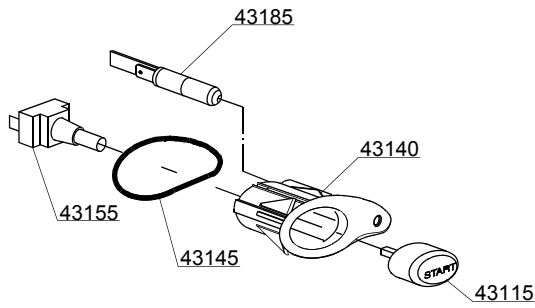
| ID | P-code | Model | Type | Accessory | Voltage | Description |
|------------------------|----------|-------|------|-----------|---------|-------------------------------------|
| MODULE:Hood insulation | | | | | | |
| 150 | 11600913 | | 110H | | | Guide |
| 155 | 11600910 | | 110H | | | Handle |
| 160 | 89919 | | 110H | | | Bearing |
| 165 | 11214 | | 110H | | | Screw |
| 170 | 11600015 | | 110H | | | Filter |
| 175 | 11600014 | | 110H | | | Roller |
| 180 | 11718 | | 110H | | | M8 stainless steel self-locking nut |
| 185 | 11600902 | | 110H | | | Hood, complete |
| 190 | 11600013 | | 110H | | | Hook |
| 195 | 11823 | | 110H | | | Ø10 stainless steel snap ring |
| 200 | 11600038 | | 110H | | | Spring bush |
| 205 | 10800010 | | 110H | | | Bearing |
| 210 | 11600026 | | 110H | | | Elbow, right |
| 215 | 11600027 | | 110H | | | Elbow, left |
| 220 | 11600030 | | 110H | | | Bearing holder |
| 225 | 11110 | | 110H | | | Screw |
| 230 | 13301 | | 110H | | | Gasket |
| 235 | 70302 | | 110H | | | Hood spring |
| 240 | 10800210 | | 110H | | | Hook screw |
| 245 | 76003 | | 110H | | | Lower front panel |
| 250 | 11600028 | | 110H | | | Guide, right |
| 255 | 11600029 | | 110H | | | Guide, left |
| 260 | 11600624 | | 110H | | | Leavers bearing for hood |
| 265 | 11134 | | 110H | | | M10x35 TE Stainless steel screw |
| 270 | 11192 | | 110H | | | M10 Stainless steel spring washer |
| 275 | 11719 | | 110H | | | M10 inox nut |
| 280 | 10800115 | | 110H | | | Lifting rod pin |
| | | | | | | |
| | | | | | | |
| | | | | | | |
| | | | | | | |

vsezip.ru

+7(812)987-08-81

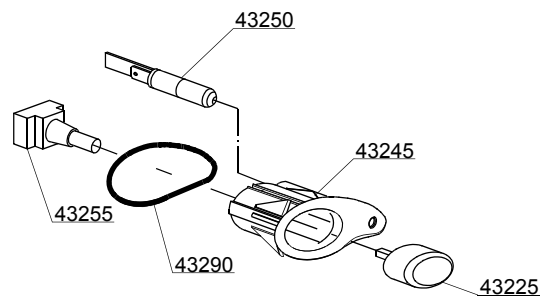
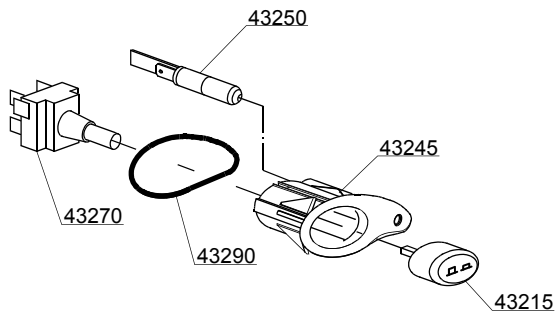
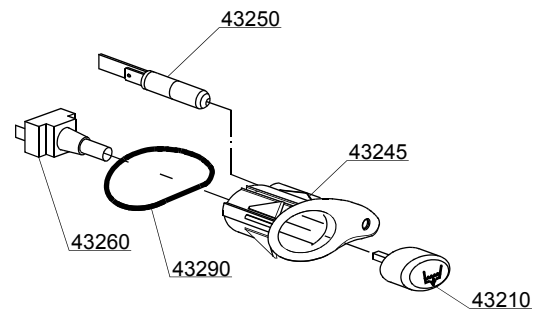
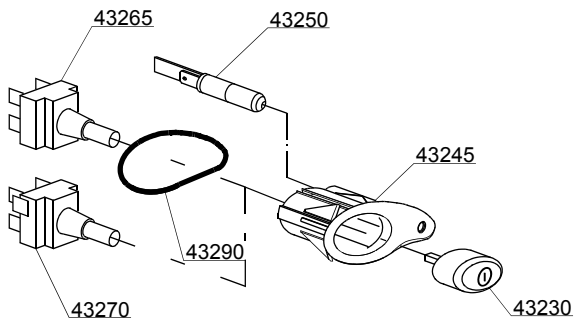
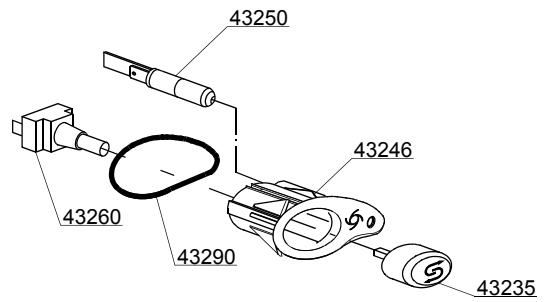
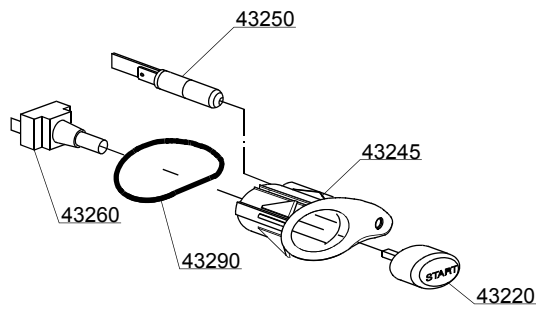
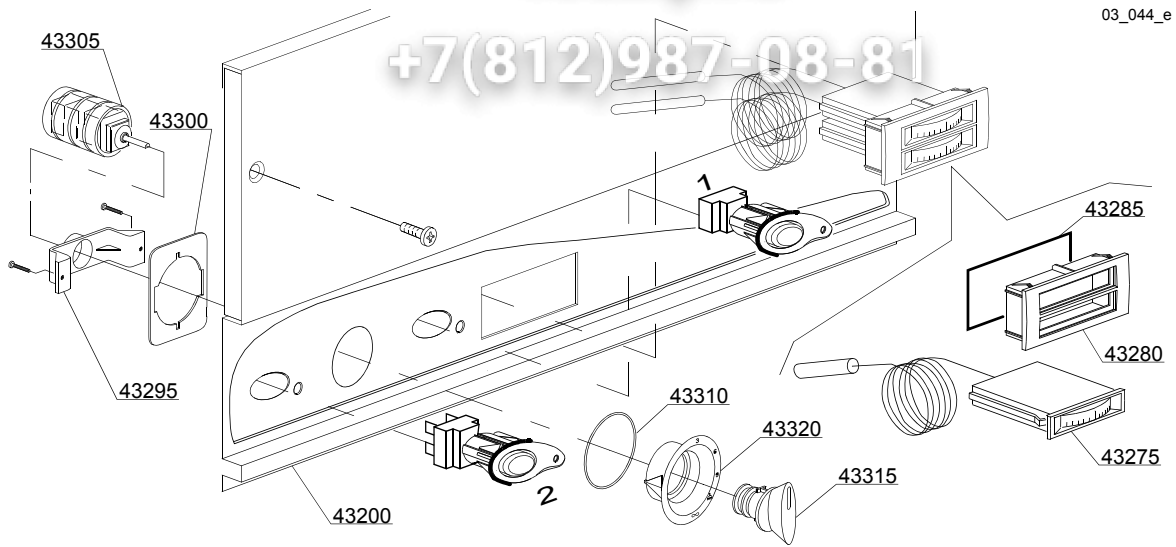


03_043_e



vsezip.ru

| ID | P-code | Model | Type | Accessory | Voltage | Description |
|-----------------------------------|----------|-------|------|-----------|---------|-------------------------------------|
| MODULE:Control panel and switches | | | | | | |
| 43100 | 76005 | | 110H | | | Control panel |
| 43105 | 89343 | | 110H | dp | | Drain pump push button (OPTIONAL) |
| 43110 | 89342 | | 110H | | | Time selector switch push button |
| 43115 | 89341 | | 110H | | | Start push button |
| 43120 | 89348 | | 110H | | | Blind push button |
| 43125 | 89340 | | 110H | | | ON-OFF push button |
| 43130 | 89345 | | 110H | ws | | Regeneration push button (OPTIONAL) |
| 43141 | 86001 | | 110H | | | Cycle push button support |
| 43140 | 86003 | | 110H | | | Push button support |
| 43145 | 86006 | | 110H | | | OR O-ring |
| 43150 | 15844 | | 110H | | | Push button support |
| 43155 | 15813 | | 110H | | | 16A unipolar switch |
| 43160 | 15812 | | 110H | | | 16A bipolar switch |
| 43160 | 15800 | | 110H | | | 16A switch |
| 43165 | 15811 | | 110H | | | 16A bipolar switch |
| 43165 | 15811/A | | 110H | | | 16A bipolar switch |
| 43170 | 10500011 | | 110H | | | Thermometer |
| 43175 | 89306 | | 110H | | | Double thermometer support |
| 43180 | 89331 | | 110H | | | OR O-ring |
| 43185 | 15826 | | 110H | | | Pilot lamp |

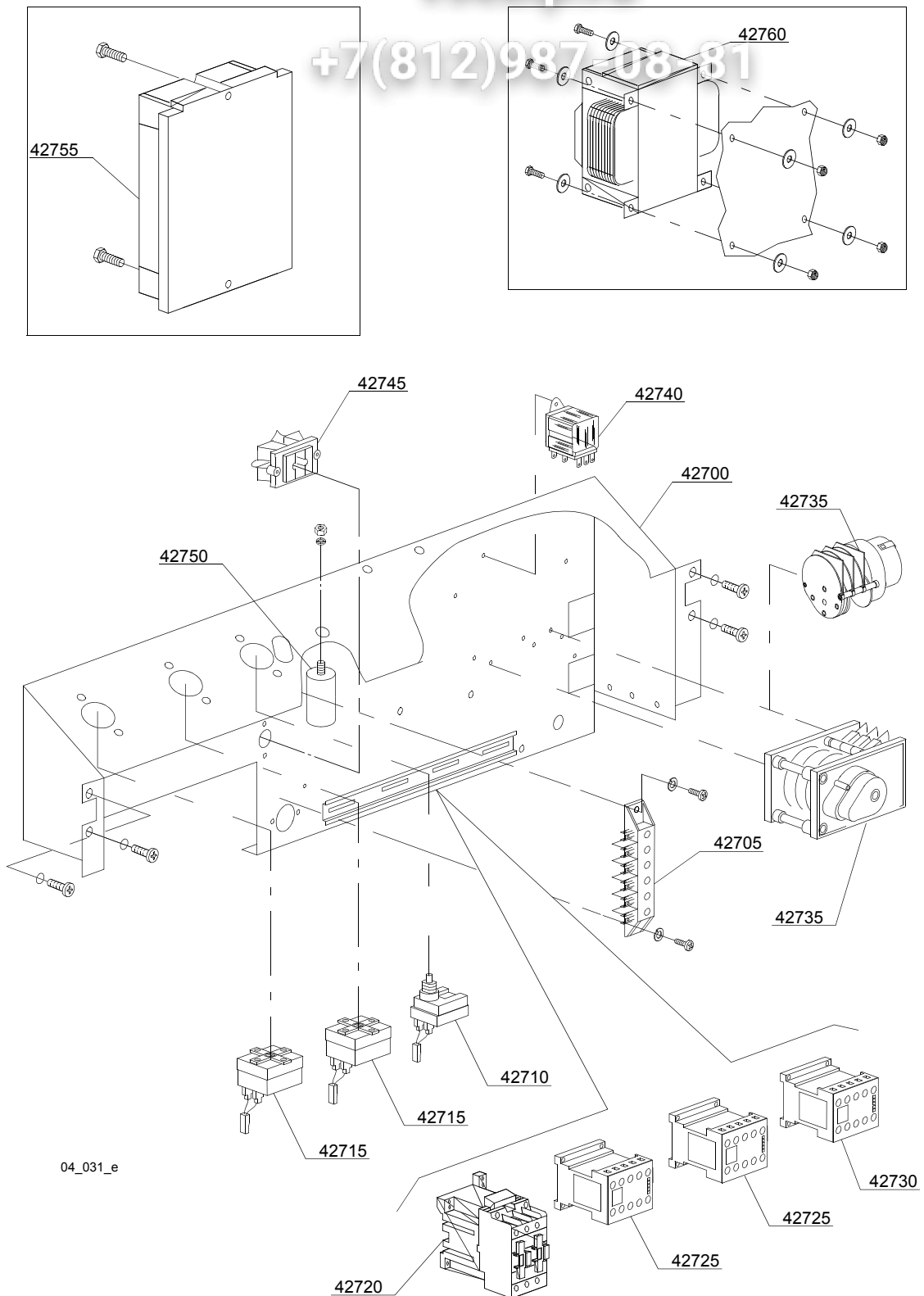


vsezip.ru

| ID | P-code | Model | Type | Accessory | Voltage | Description |
|-----------------------------------|----------|-------|------|-----------|---------|--|
| MODULE:Control panel and switches | | | | | | |
| 43200 | 76011 | | 110H | | | Control panel |
| 43210 | 89343 | | 110H | | | Drain pump push button |
| 43215 | 89342 | | 110H | | | Time selector switch push button |
| 43220 | 89341 | | 110H | | | Start push button (optional) |
| 43225 | 89348 | | 110H | | | Blind push button |
| 43230 | 89340 | | 110H | ws | | ON-OFF push button |
| 43235 | 89345 | | 110H | | | Regeneration push button |
| 43245 | 86001 | | 110H | | | Cycle push button support |
| 43245 | 86003 | | 110H | | | Push button support |
| 43245 | 86002 | | 110H | | | Temperature push button support |
| 43250 | 15826 | | 110H | | | Pilot lamp |
| 43255 | 15844 | | 110H | | | Push button support |
| 43260 | 15813 | | 110H | | | 16A unipolar switch |
| 43265 | 15800 | | 110H | | | 16A bipolar switch |
| 43265 | 15812 | | 110H | | | 16A switch |
| 43270 | 15811 | | 110H | | | 16A bipolar switch |
| 43270 | 15811/A | | 110H | | | 16A bipolar switch |
| 43275 | 10500011 | | 110H | | | Thermometer |
| 43280 | 89306 | | 110H | | | Double thermometer support |
| 43285 | 89331 | | 110H | | | OR O-ring |
| 43290 | 86006 | | 110H | | | OR O-ring |
| 43295 | 89322 | | 110H | | | Selector switch screw retainer support |
| 43300 | 89323 | | 110H | | | Screw retainer |
| 43305 | 10300208 | | 110H | | | Timer selector |
| 43310 | 89332 | | 110H | | | OR O-ring |
| 43315 | 89321 | | 110H | | | Selector switch handle control |
| 43320 | 89349 | | 110H | | | Selector switch support |
| | | | | | | |
| | | | | | | |
| | | | | | | |
| | | | | | | |
| | | | | | | |

vsezip.ru

+7(812)987-08-81



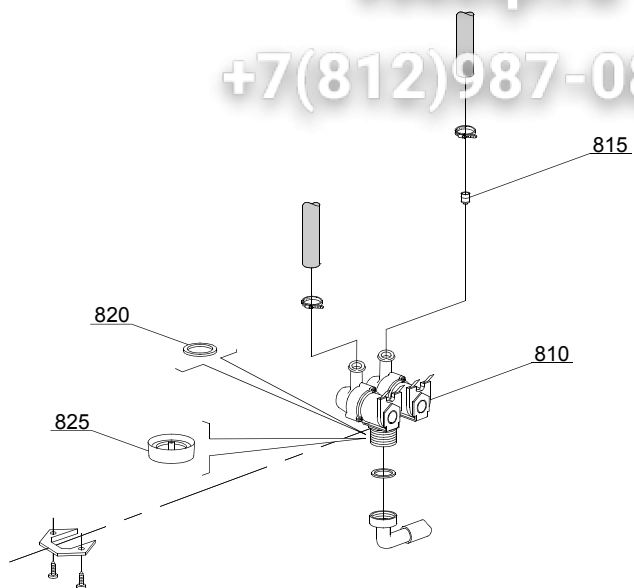
04_031_e

vsezip.ru

| ID | P-code | Model | Type | Accessory | Voltage | Description |
|------------------------------------|----------|-------|------|-----------|---------|--|
| MODULE:Electric control components | | | | | | |
| 42700 | 76002 | | 110H | | | Electric component panel |
| 42705 | 500551 | | 110H | | | 6 poles terminal board |
| 42710 | 2000430 | | 110H | | | Safety thermostat |
| 42715 | 10707/1 | | 110H | | | 0-90°C thermostat |
| 42720 | 10300050 | | 110H | | | 25A/12A contactor - 230V 50/60HZ |
| 42720 | 10300052 | | 110H | | | 36A/20A contactor - 230V 50/60HZ |
| 42720 | 10300054 | | 110H | | | 25A/16A contactor - 230V 50/60HZ |
| 42725 | 15086/B | | 110H | | | Contactor 240V 50Hz |
| 42730 | 10300391 | | 110H | | | 3NA/1NC contactor 230V 50/60HZ |
| 42730 | 10300392 | | 110H | | | 3NA/1NC contactor - 240Vac 50Hz |
| 42735 | 10300118 | | 110H | | | 60/90/120" timer - 60Hz |
| 42735 | 10708/N | | 110H | | | 90" timer with thermostop |
| 42735 | 10708/T | | 110H | | | 120" timer with thermostop |
| 42735 | 10300121 | | 110H | | | 60/120/180" timer |
| 42740 | 15620 | | 110H | | | Bipolar relay in deviation |
| 42745 | 15065/A | | 110H | | | Cable-fastener with screw |
| 42750 | 15149 | | 110H | | | Low noise filter |
| 42755 | 50553 | | 110H | | | 3 times electronic timer with regeneration |
| 42760 | 15381 | | 110H | | | 160Va transformer |
| | | | | | | |
| | | | | | | |

vsezip.ru

+7(812)987-08-81



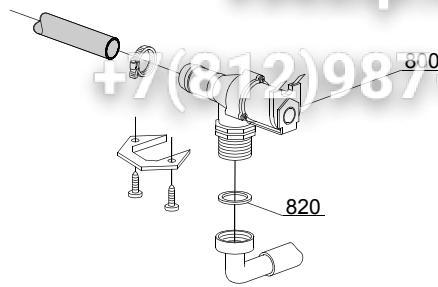
05_003_e

vsezip.ru

| ID | P-code | Model | Type | Accessory | Voltage | Description |
|------------------------------|--------|-------|------|-----------|---------|-------------------------------|
| MODULE: Solenoid valve group | | | | | | |
| 810 | 15098 | | 110H | cr,ws | | Double solenoid valve - Ø10 |
| 815 | 15115 | | 110H | cr,ws | | Green pression solenoid valve |
| 820 | N.C. | | 110H | cr,ws | | Pression reducing valve |

vsezip.ru

+7(812)987-08-81



05_005_e

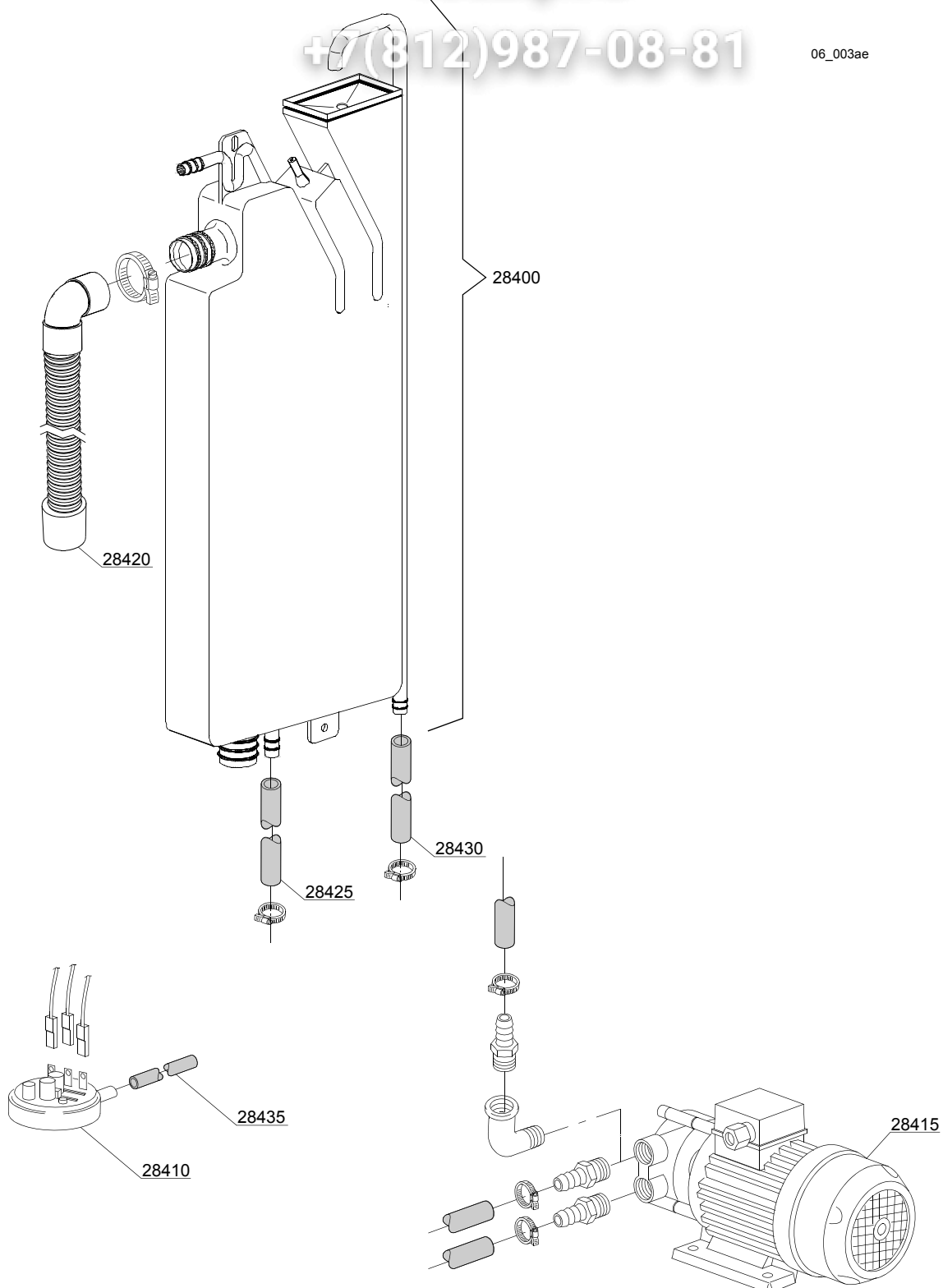
vsezip.ru

| ID | P-code | Model | Type | Accessory | Voltage | Description |
|------------------------------|----------|-------|------|-----------|---------|-------------------------|
| MODULE: Solenoid valve group | | | | | | |
| 800 | 30001000 | | 110H | | | Solenoid valve |
| 820 | N.C. | | 110H | | | Pression reducing valve |
| | | | | | | |
| | | | | | | |

vsezip.ru

+7(812)987-08-81

06_003ae



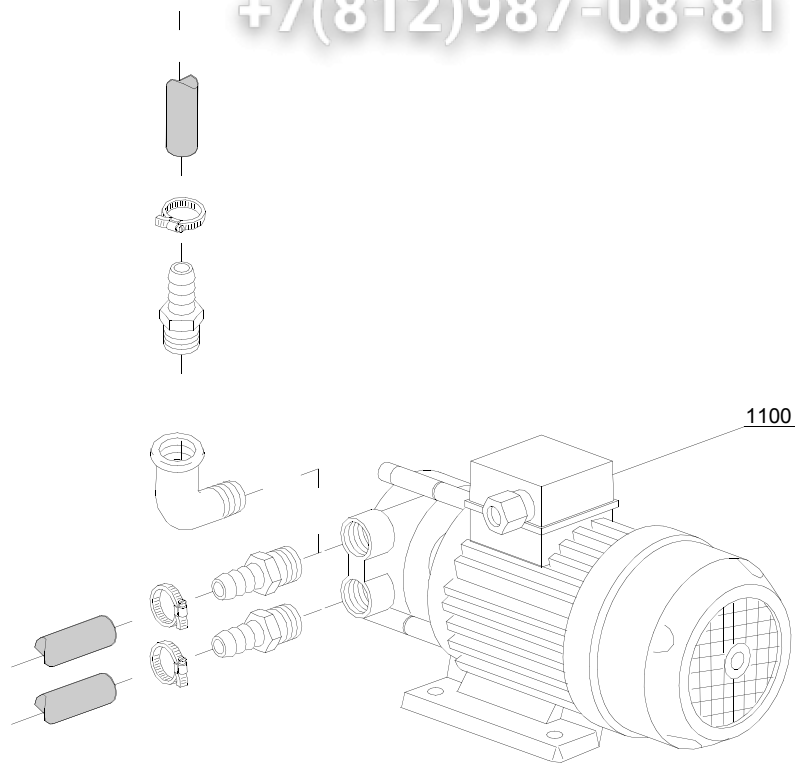
vsezip.ru

| ID | P-code | Model | Type | Accessory | Voltage | Description |
|-------------------|---------|-------|------|-----------|---------|-----------------------------|
| MODULE:Break Tank | | | | | | |
| 28400 | 15720 | | 110H | bt | | Break tank assembly |
| 28410 | 10706/A | | 110H | bt | | 47-27 pressure switch |
| 28415 | 15100 | | 110H | bt | | Booster pump 0,5HP 220/240V |
| 28415 | 15100/D | | 110H | bt | | Booster pump 0,5HP 220/240V |
| 28420 | 15721 | | 110H | bt | | BT long pipe L=1070 |
| 28420 | 15722 | | 110H | bt | | BT middle pipe L=920 |
| 28420 | 15723 | | 110H | bt | | BT small pipe L=920 |
| 28425 | 2907350 | | 110H | bt | | 12x20 EPDM rubber hose |
| 28430 | 2907352 | | 110H | bt | | PVC WRAS rubber hose |
| 28435 | 14508 | | 110H | bt | | 4,5x9 EPDM rubber hose |
| | | | | | | |
| | | | | | | |

vsezip.ru

07_002_e

+7(812)987-08-81

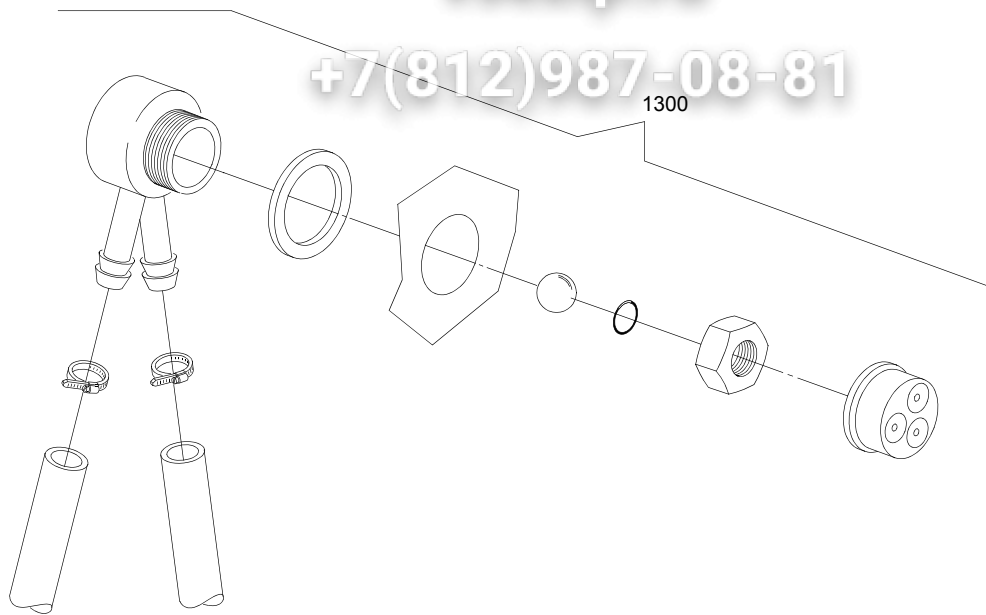


vsezip.ru

| ID | P-code | Model | Type | Accessory | Voltage | Description |
|---------------------|---------|-------|------|-----------|---------|-----------------------------|
| MODULE:Booster pump | | | | | | |
| 1100 | 15100 | | 110H | bp | | Booster pump 0,5HP 220/240V |
| 1100 | 15100/A | | 110H | bp | | Booster pump - 0,5HP 60Hz |
| | | | | | | |
| | | | | | | |

vsezip.ru

+7(812)987-08-81

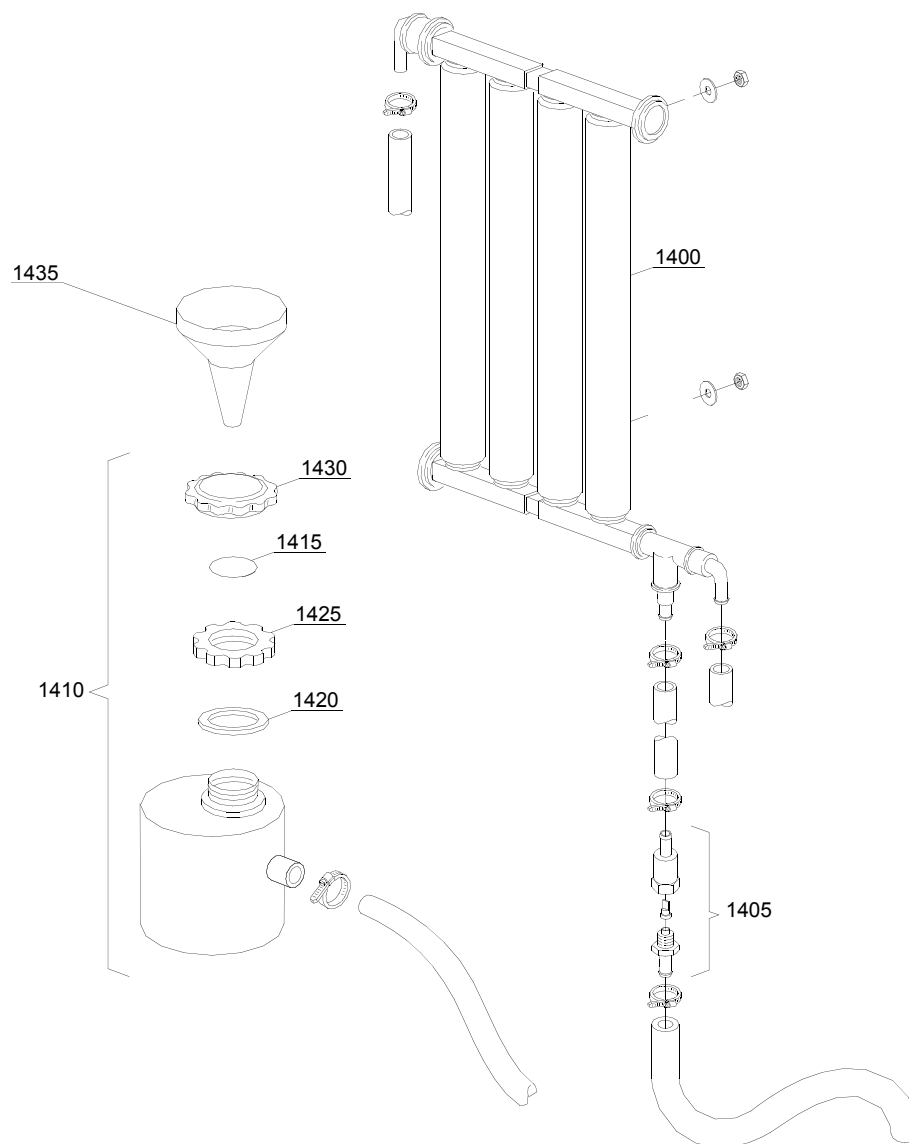


08_005_e

vsezip.ru

| ID | P-code | Model | Type | Accessory | Voltage | Description |
|-------------|-----------|-------|------|-----------|---------|---------------|
| MODULE:DVGW | | | | | | |
| 1300 | 999900006 | | 110H | dvgw | | DVGW assembly |
| | | | | | | |

09_001_e

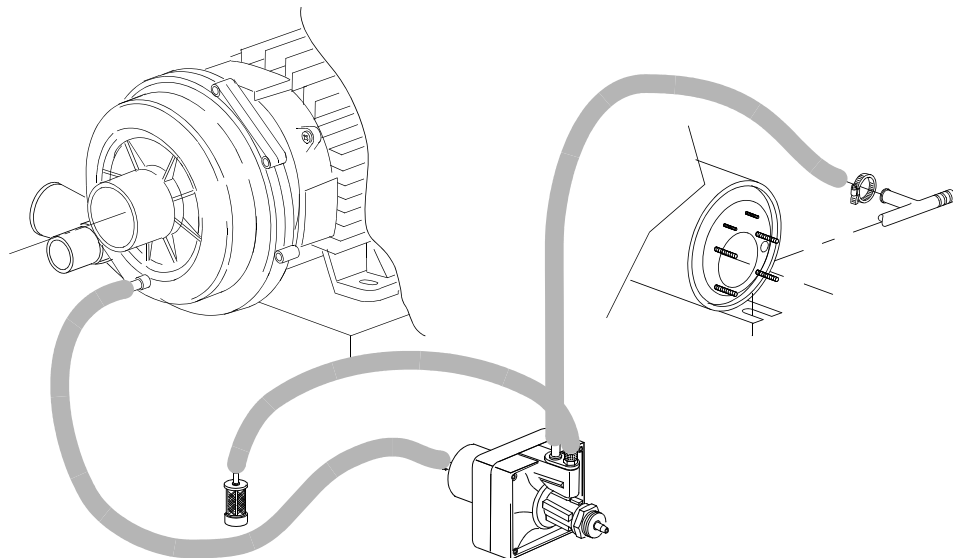
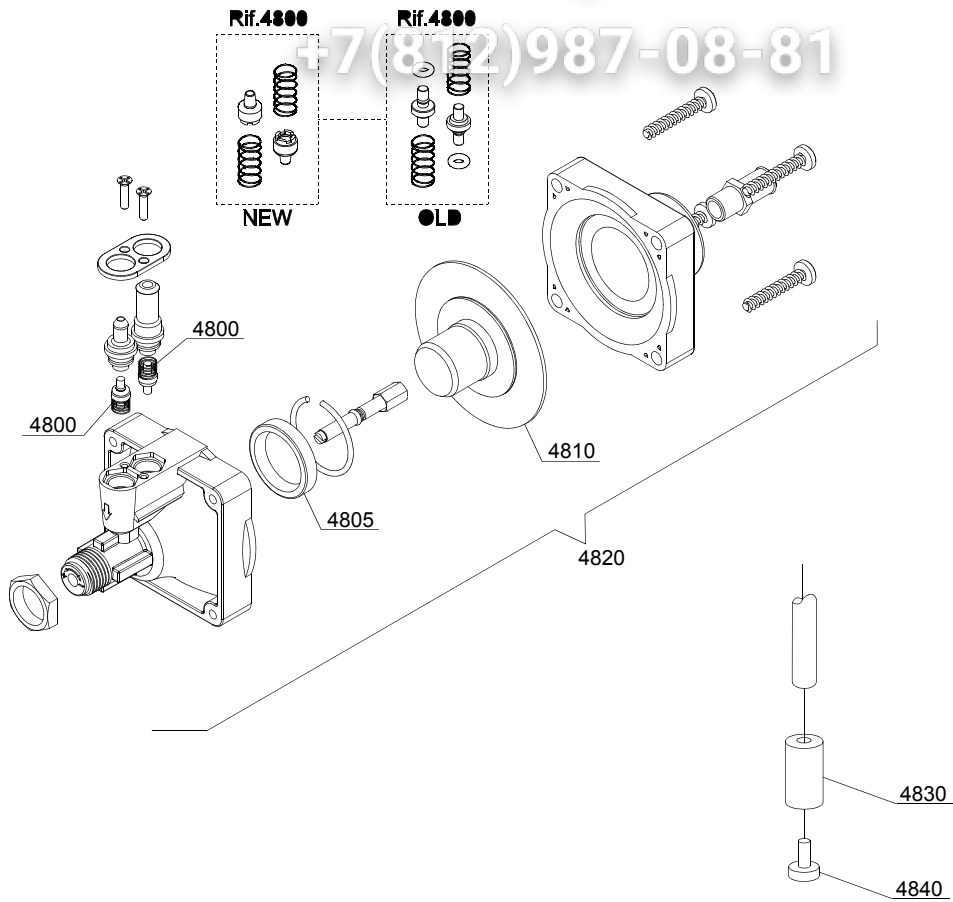


vsezip.ru

| ID | P-code | Model | Type | Accessory | Voltage | Description |
|----------------------------|---------|-------|------|-----------|---------|--------------------------|
| MODULE:Water softner group | | | | | | |
| 1400 | 16066 | | 110H | ws | | 4 elements water softner |
| 1405 | 16070 | | 110H | ws | | Nonreturn valve |
| 1410 | 16065 | | 110H | ws | | Salt container |
| 1415 | 16067/A | | 110H | ws | | OR O-ring |
| 1420 | 16067/B | | 110H | ws | | O-ring |
| 1425 | 16067/C | | 110H | ws | | Ring nut |
| 1430 | 16067/D | | 110H | ws | | Plug |
| 1435 | 16082 | | 110H | ws | | Funnel |
| | | | | | | |
| | | | | | | |
| | | | | | | |

vsezip.ru

+7(812)987-08-81



10_004ae

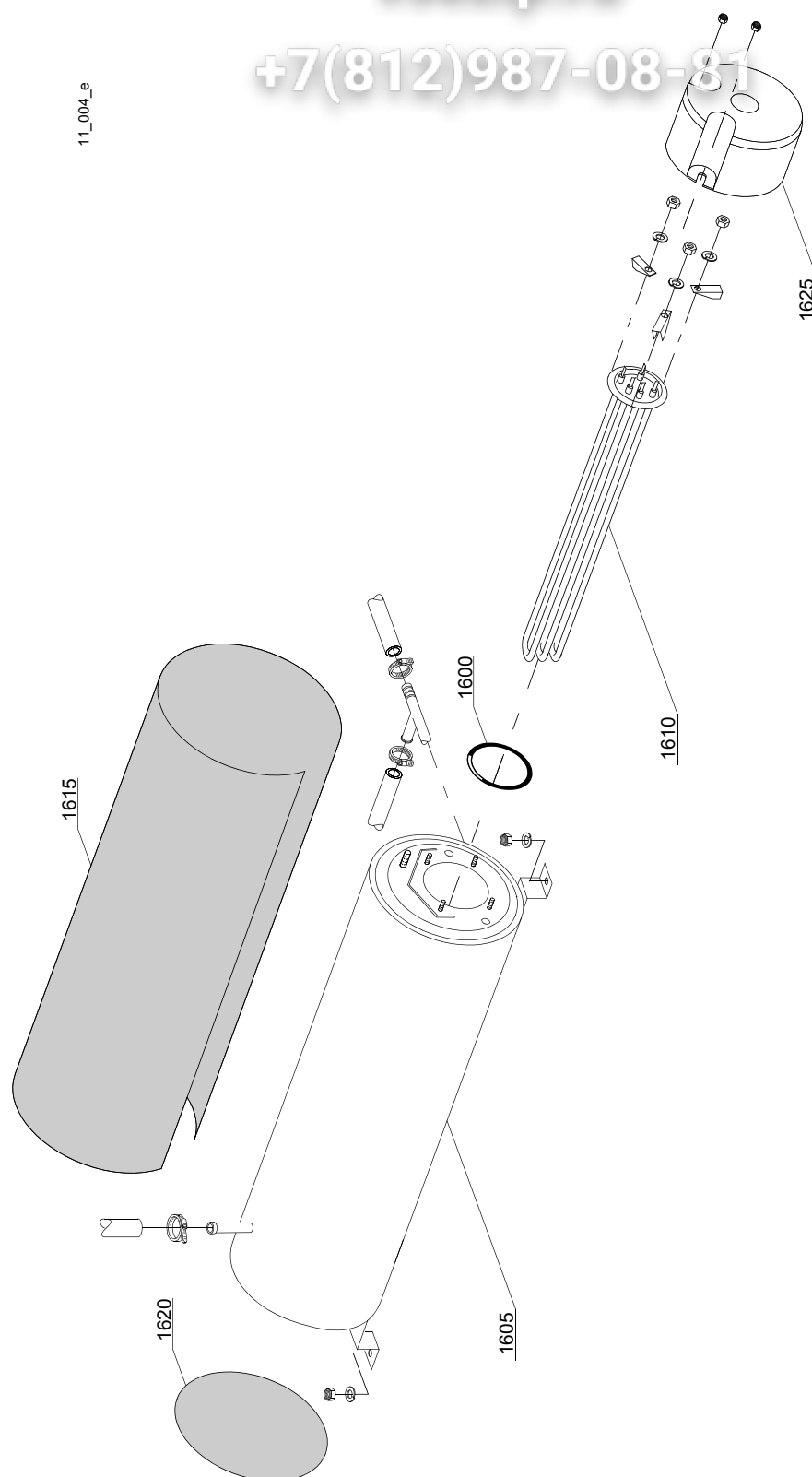
vsezip.ru

| ID | P-code | Model | Type | Accessory | Voltage | Description |
|-----------------------------------|--------|-------|------|-----------|---------|---------------------------|
| MODULE: Rinse aid dispenser group | | | | | | |
| 4800 | 10805 | | 110H | | | Tecnopro non return valve |
| 4805 | 10806 | | 110H | | | Ø22 O-ring |
| 4810 | 10807 | | 110H | | | Membrane |
| 4820 | 10799 | | 110H | | | Rinse aid dispenser |
| 4830 | 12525 | | 110H | | | Counter-weight |
| 4840 | 15058 | | 110H | | | Small filter |
| | | | | | | |

vsezip.ru

+7(812)987-08-81

11_004_e

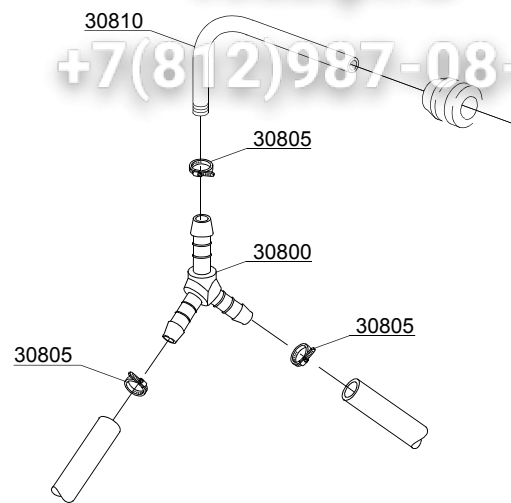


vsezip.ru

| ID | P-code | Model | Type | Accessory | Voltage | Description |
|---------------------|------------|-------|------|-----------|---------|---------------------------------------|
| MODULE:Boiler group | | | | | | |
| 1600 | 13015 | | 110H | | | O-ring |
| 1605 | 22002 | | 110H | | | Boiler |
| 1605 | 75927 | | 110H | | | AISI 314 boiler |
| 1610 | 30001010 | | 110H | | | 6/6,53KW 230/240/3 heating element |
| 1610 | 30001011 | | 110H | | | Element 9kW |
| 1610 | 30001011/A | | 110H | | | 12/13,07KW 230/240V 3 heating element |
| 1615 | 30002030 | | 110H | | | Insulation boiler |
| 1620 | 75205 | | 110H | | | Ø160 end piece |
| 1625 | 75311 | | 110H | | | Heating element cover |
| | | | | | | |

vsezip.ru

+7(812)987-08-81



12_003_e

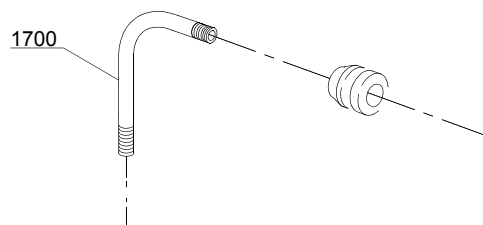
vsezip.ru

| ID | P-code | Model | Type | Accessory | Voltage | Description |
|--------------------------|--------|-------|------|-----------|---------|----------------------------------|
| MODULE:3 ways connection | | | | | | |
| 30800 | 540091 | | 110H | | | Ø12 mm plastic 3 ways connection |
| 30805 | 11807 | | 110H | | | Clamp |
| | | | | | | |
| | | | | | | |

vsezip.ru

12_007ae

+7(812)987-08-81

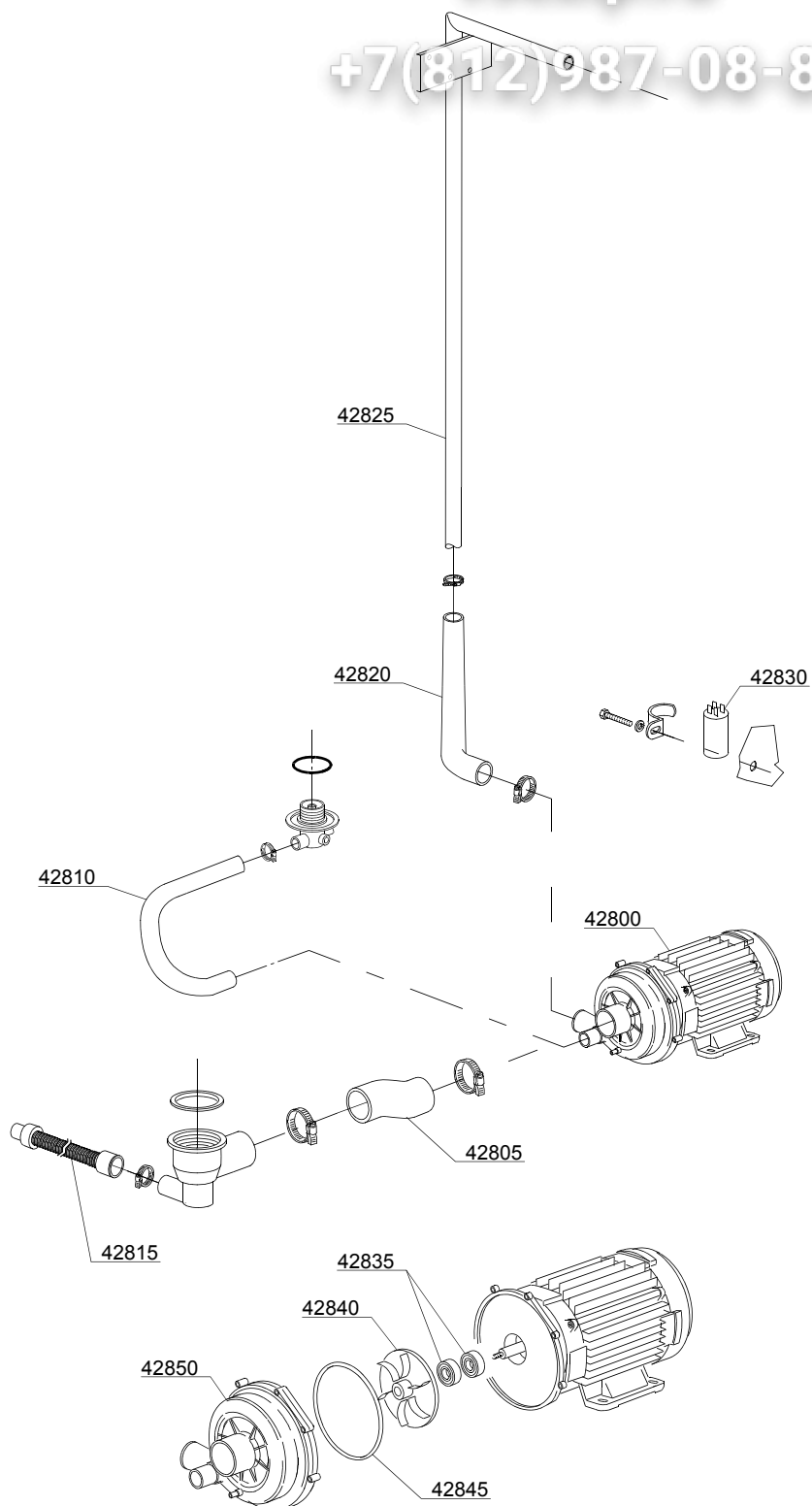


vsezip.ru

| ID | P-code | Model | Type | Accessory | Voltage | Description |
|-------------------------|--------|-------|------|-----------|---------|-------------------|
| MODULE:Connection group | | | | | | |
| 1700 | 15168 | | 110H | | | 2 ways connection |
| | | | | | | |
| | | | | | | |

vsezip.ru

+7(812)987-08-81



13_124_e

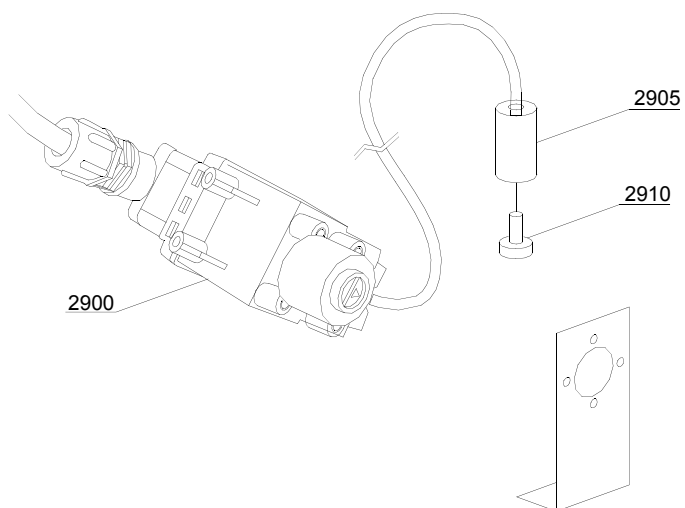
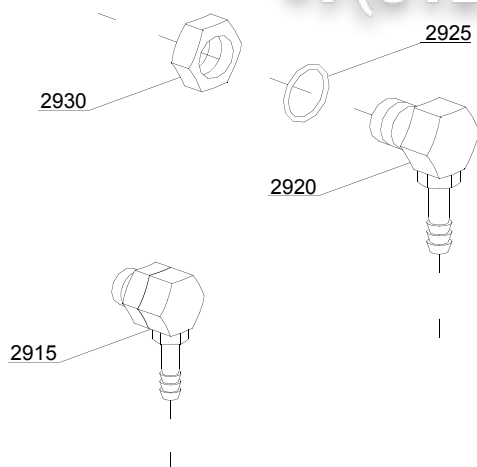
vsezip.ru

| ID | P-code | Model | Type | Accessory | Voltage | Description |
|------------------------|----------|-------|------|-----------|---------|----------------------------|
| MODULE:Wash pump group | | | | | | |
| 42800 | 22009 | | 110H | | A | 1,5Hp pump |
| 42800 | 22036 | | 110H | | I | 1,5Hp - 60Hz pump |
| 42800 | 22041 | | 110H | | | 1,5Hp pump - 380/3Vac 50Hz |
| 42800 | 15913 | | 110H | | | 1,2Hp pump - 230V- 50Hz |
| 42800 | 15913/B | | 110H | | | 1,2Hp pump - 240V- 50Hz |
| 42800 | 15913/C | | 110H | | | 1,2Hp pump - 220V- 60Hz |
| 42805 | 25032 | | 110H | | | Suction pipe coupling |
| 42810 | 15033/A | | 110H | | | Lower delivery wash pipe |
| 42815 | 10727 | | 110H | | | Drain pipe |
| 42820 | 76078 | | 110H | | | Top delivery pipe |
| 42825 | 11600103 | | 110H | | | Wash ramp |
| 42830 | 15081/A | | 110H | | | Condenser 16 uF |
| 42835 | 15080/E | | 110H | | | Rotating seals |
| 42840 | 22009/A | | 110H | | | Pump rotor |
| 42845 | 15080/A | | 110H | | | O-ring |
| 42850 | 15078 | | 110H | | | Scroll |

vsezip.ru

+7(812)987-08-81

14_002_e

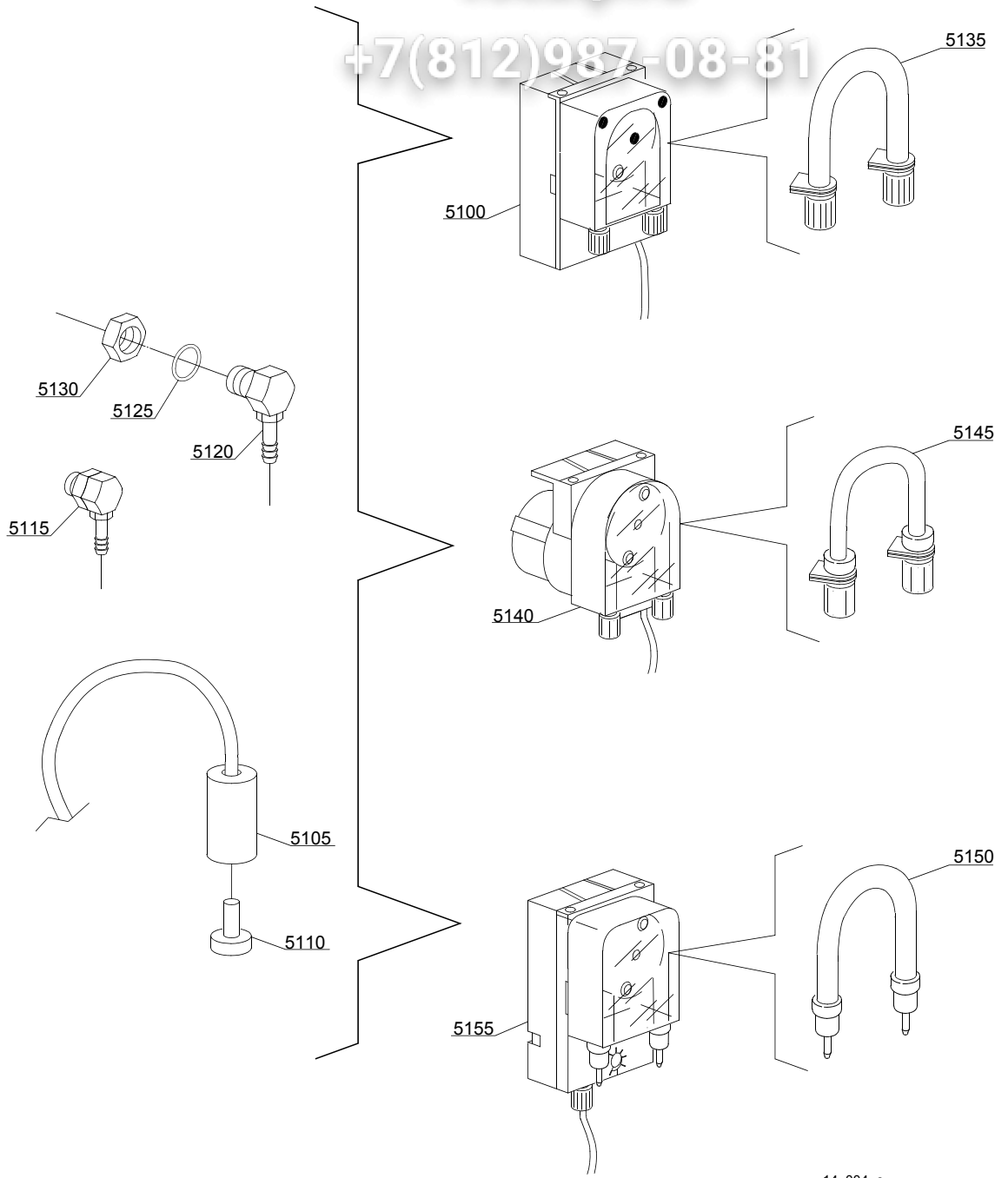


vsezip.ru

| ID | P-code | Model | Type | Accessory | Voltage | Description |
|-------------------------------|----------|-------|------|-----------|---------|---------------------------|
| MODULE:Dosing detergent group | | | | | | |
| 2900 | 15108/L | | 110H | dd | | Lang detergent pump |
| 2905 | 12525 | | 110H | dd | | Counter-weight |
| 2910 | 15058 | | 110H | dd | | Small filter |
| 2915 | 15123 | | 110H | dd | | Compleat plastic injector |
| 2920 | 15148 | | 110H | dd | | Steel injector |
| 2925 | 15159 | | 110H | dd | | OR O-ring |
| 2930 | 10200205 | | 110H | dd | | M12x1 stainless steel nut |
| | | | | | | |

vsezip.ru

+7(812)987-08-81



14_004_e

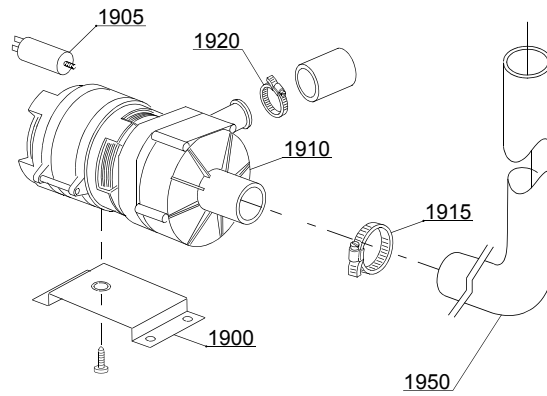
vsezip.ru

| ID | P-code | Model | Type | Accessory | Voltage | Description |
|-------------------------------|----------|-------|------|-----------|---------|------------------------------|
| MODULE:Dosing detergent group | | | | | | |
| 5100 | 15985 | | 110H | dd | | Seko detergent pump |
| 5105 | 12525 | | 110H | dd | | Counter-weight |
| 5110 | 15058 | | 110H | dd | | Small filter |
| 5115 | 15123 | | 110H | dd | | Complet plastic injector |
| 5120 | 15148 | | 110H | dd | | Steel injector |
| 5125 | 15159 | | 110H | dd | | OR O-ring |
| 5130 | 10200205 | | 110H | dd | | M12x1 stainless steel nut |
| 5135 | 15185 | | 110H | dd | | Seko thermoplastic pipe |
| 5140 | 15985 | | 110H | dd | | Germac detergent pump |
| 5145 | 15108/E | | 110H | dd | | Germac thermoplastic pipe |
| 5150 | 15985/A | | 110H | dd | | PLAS CONT thermoplastic pipe |
| 5155 | 15985 | | 110H | dd | | PLAS CONT detergent pump |

vsezip.ru

+7(812)987-08-81

15_003ce

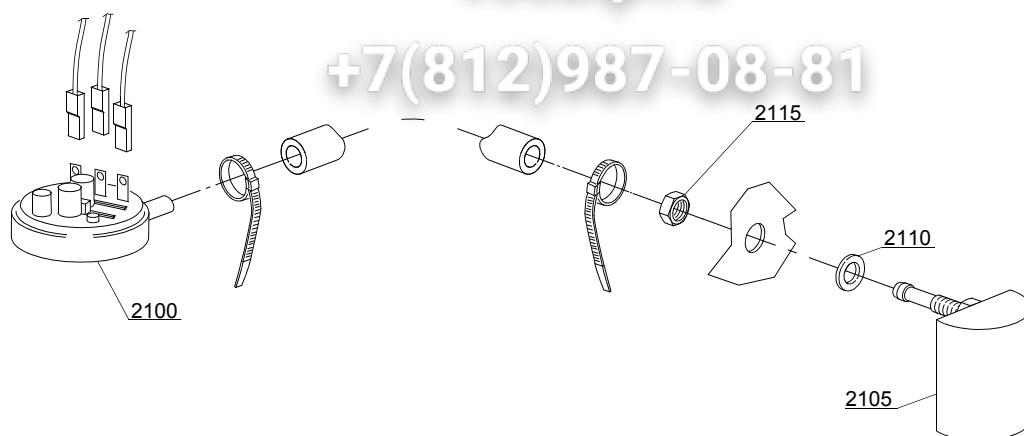


vsezip.ru

| ID | P-code | Model | Type | Accessory | Voltage | Description |
|--------------------------|---------|-------|------|-----------|---------|------------------------------|
| MODULE: Drain pump group | | | | | | |
| 1900 | 440122 | | 110H | dp | | Pump support |
| 1905 | 10702 | | 110H | dp | | 5 uF condenser |
| 1910 | 10501/D | | 110H | dp | | Drain pump (extra equipment) |
| 1915 | 11806 | | 110H | dp | | 25/40 clamp |
| 1920 | 11836 | | 110H | dp | | 20/32 clamp |
| 1950 | 18044 | | 110H | dp | | Ø 28 Top pipe |
| | | | | | | |
| | | | | | | |

vsezip.ru

+7(812)987-08-81

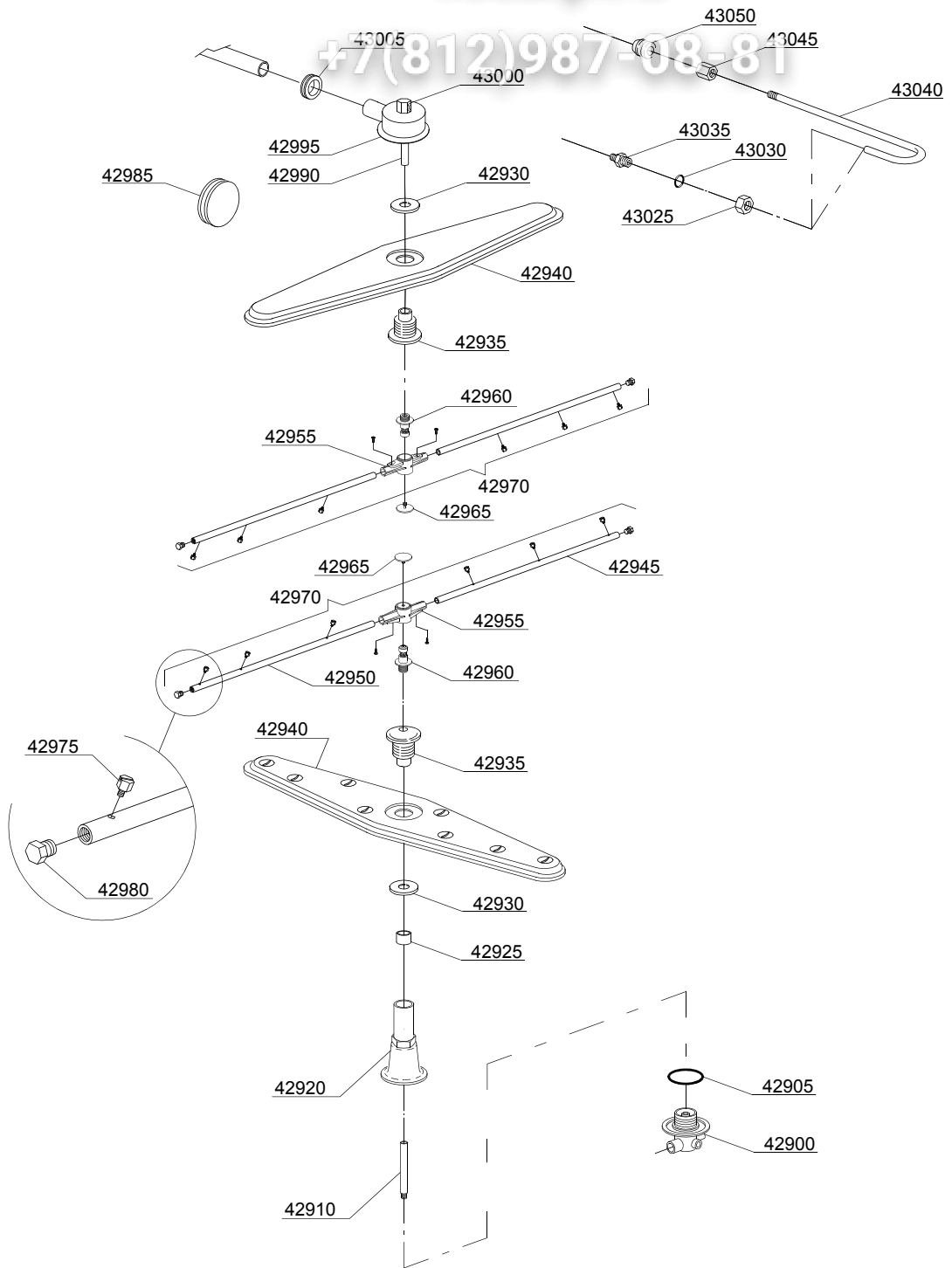


16_001_e

vsezip.ru

| ID | P-code | Model | Type | Accessory | Voltage | Description |
|--|----------|-------|------|-----------|---------|-----------------------|
| MODULE:Pressure switch group with air trap | | | | | | |
| 2100 | 10706/A | | 110H | | | Pressure switch 47-27 |
| 2100 | 75950 | | 110H | | | Pressure switch PR |
| 2105 | 135911/B | | 110H | | | Air trap |
| 2110 | 13301 | | 110H | | | Gasket |
| 2115 | 11702 | | 110H | | | Nut |
| | | | | | | |
| | | | | | | |
| | | | | | | |

vsezip.ru



17_129_e

vsezip.ru

| ID | P-code | Model | Type | Accessory | Voltage | Description |
|--|---------|-------|------|-----------|---------|---|
| MODULE:Turret group with rotating arms | | | | | | |
| 42900 | 500612 | | 110H | | | Top/lower turret |
| 42905 | 13015 | | 110H | | | 6225 OR 160 NBR O-ring |
| 42910 | 76079 | | 110H | | | Rinse axle |
| 42920 | 76077 | | 110H | | | Lower pipe coupling |
| 42925 | 75321 | | 110H | | | Spacer for hub |
| 42930 | 75317 | | 110H | | | Nut for wash arm bearing |
| 42935 | 75320 | | 110H | | | Wash arm bearing |
| 42940 | 75915 | | 110H | | | Stainless steel wash rotor |
| 42945 | 10657 | | 110H | | | Right rinse arm - stainless steel nozzle |
| 42950 | 10658 | | 110H | | | Left rinse arm - stainless steel nozzle |
| 42955 | 10650 | | 110H | | | Rinse arm |
| 42960 | 10651 | | 110H | | | Rinse axle |
| 42965 | 10652 | | 110H | | | Rinse arm screw |
| 42970 | 75918 | | 110H | | | Top/lower rinse arm complete |
| 42975 | 560018 | | 110H | | | Stainless steel rinse nozzle |
| 42980 | 560017 | | 110H | | | Rinse arm plug |
| 42985 | 13316/A | | 110H | | | DVGW hole O-ring |
| 42990 | 75322 | | 110H | | | Top rinse axle |
| 42995 | 75067 | | 110H | | | Stainless steel turret |
| 43000 | 75319 | | 110H | | | Rinse elbow |
| 43005 | 76081 | | 110H | | | Pipe-pass O-ring 51x34x14 |
| 43025 | 12006/A | | 110H | | | Ø10 pipe fitting 3/8x3,5 nut 19 hexagonal |
| 43030 | 13003 | | 110H | | | OR 112 NBR O-ring |
| 43035 | 12006 | | 110H | | | Ø10 rinse pipe fitting |
| 43040 | 75066 | | 110H | | | Top rinse pipe |
| 43045 | 12526 | | 110H | | | Stainless steel nut coupling |
| 43050 | 13304 | | 110H | | | Pipe-pass O-ring |