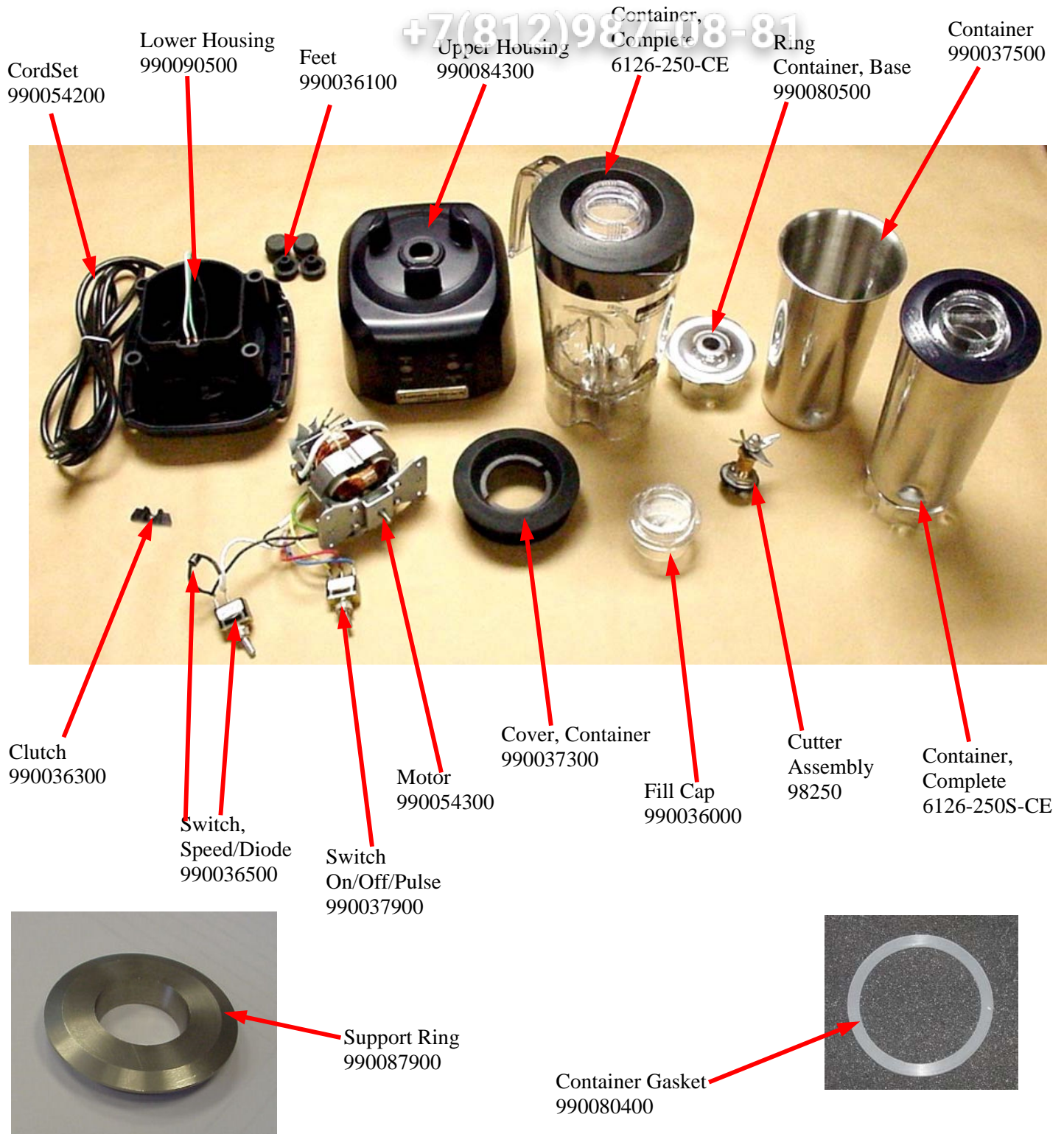



Replacement Parts Diagram Model HBB250S-CE (Series A-F)

PROPRIETARY RIGHTS NOTICE This document and all information contained within it is the property of Hamilton Beach Brands, Inc. (HBB). It is confidential and proprietary and has been provided to you for a limited purpose. It must be returned or destroyed upon request. Disclosure, reproduction or use of this document and any information contained within it, in full or in part, for any purpose is forbidden without the prior written consent of HBB. No photographs may be taken of any article fabricated or assembled from this document without the prior written consent of HBB.



 4421 Waterfront Drive Glen Allen, VA 23060	Revision Description:		Added Jar Sensor and part number									
	Request Number:		HQE-8982		Revision Date:		1/27/10		Approved by:		HQE-8982	
	Issue Code(s):		CS, SP		Page:	1 of 4	Document #:		510020300		Rev:	H

Replacement Parts Diagram Model HBB250S-CE (Series A-F)

PROPRIETARY RIGHTS NOTICE This document and all information contained within it is the property of Hamilton Beach Brands, Inc. (HBB). It is confidential and proprietary and has been provided to you for a limited purpose. It must be returned or destroyed upon request. Disclosure, reproduction or use of this document and any information contained within it, in full or in part, for any purpose is forbidden without the prior written consent of HBB. No photographs may be taken of any article fabricated or assembled from this document without the prior written consent of HBB.

+7(812)987-08-81

Jar Sensor (Only)
Qty of 1
990084400



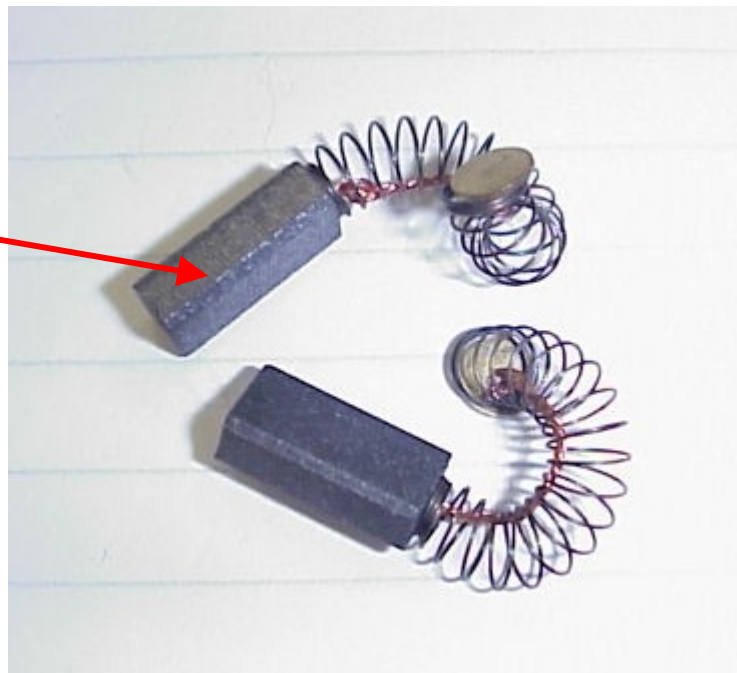
RFI Board with Sensor
990064600

Cordset Socket
990064800



Hamilton Beach
Commercial Badge
990092700

Brush Motor Kit
990075100



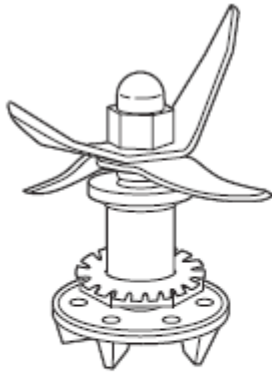
Hamilton Beach 4421 Waterfront Drive Glen Allen, VA 23060	Revision Description:	Added Jar Sensor and part number					
	Request Number:	HQE-8982	Revision Date:	1/27/10	Approved by:	HQE-8982	
	Issue Code(s):	CS, SP	Page:	2 of 4	Document #:	510020300	Rev: H

Replacement Parts Diagram Model HBB250S-CE (Series A-F)

PROPRIETARY RIGHTS NOTICE This document and all information contained within it is the property of Hamilton Beach Brands, Inc. (HBB). It is confidential and proprietary and has been provided to you for a limited purpose. It must be returned or destroyed upon request. Disclosure, reproduction or use of this document and any information contained within it, in full or in part, for any purpose is forbidden without the prior written consent of HBB. No photographs may be taken of any article fabricated or assembled from this document without the prior written consent of HBB.

Cutter Assembly Replacement Instructions

+7(812)987-08-81



Cutter Repair Kit
for Rio Blenders



⚠ WARNING



Cut Hazard
Handle cutter
assembly with
care.
Failure to follow
these instructions
can result in cuts
or other injuries.

Removing the old cutter assembly



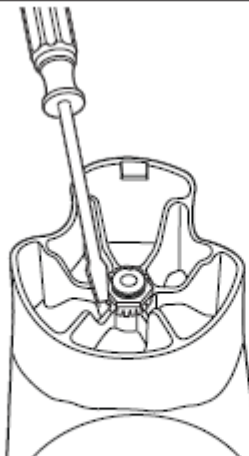
Hold the blades with a
cloth. Unscrew the clutch
counterclockwise.



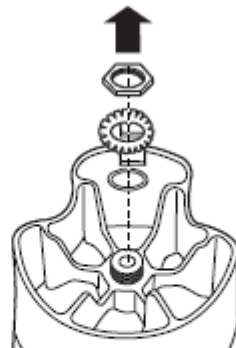
Remove the clutch and
felt washer.



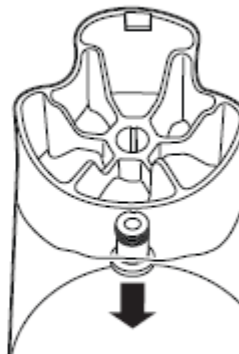
Remove the shaft and
blade assembly




Use a flathead screw-
driver to flatten the tabs
on the tab washer.



Remove the nut by
turning counterclockwise
by hand. Then remove
the tab washer and
pressure washer.

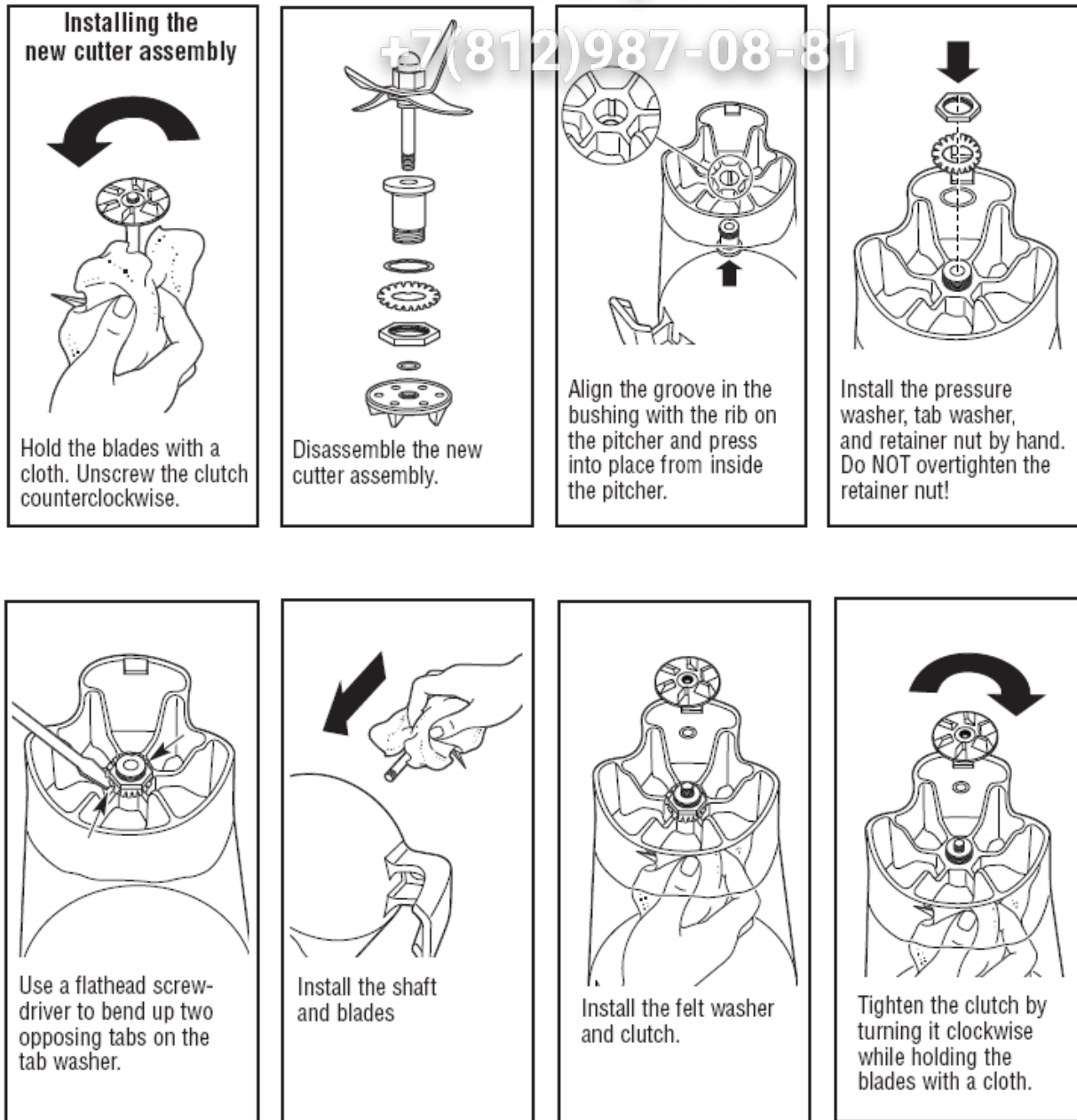



Remove bushing.

 4421 Waterfront Drive Glen Allen, VA 23060	Revision Description:		Added Jar Sensor and part number					
	Request Number:	HQE-8982	Revision Date:	1/27/10	Approved by:	HQE-8982		
	Issue Code(s):	CS, SP	Page:	3 of 4	Document #:	510020300	Rev:	H

Replacement Parts Diagram Model HBB250S-CE (Series A-F)

PROPRIETARY RIGHTS NOTICE This document and all information contained within it is the property of Hamilton Beach Brands, Inc. (HBB). It is confidential and proprietary and has been provided to you for a limited purpose. It must be returned or destroyed upon request. Disclosure, reproduction or use of this document and any information contained within it, in full or in part, for any purpose is forbidden without the prior written consent of HBB. No photographs may be taken of any article fabricated or assembled from this document without the prior written consent of HBB.



 4421 Waterfront Drive Glen Allen, VA 23060	Revision Description:		Added Jar Sensor and part number									
	Request Number:		HQE-8982		Revision Date:		1/27/10		Approved by:		HQE-8982	
	Issue Code(s):		CS, SP		Page:	4 of 4	Document #:		510020300		Rev:	H