

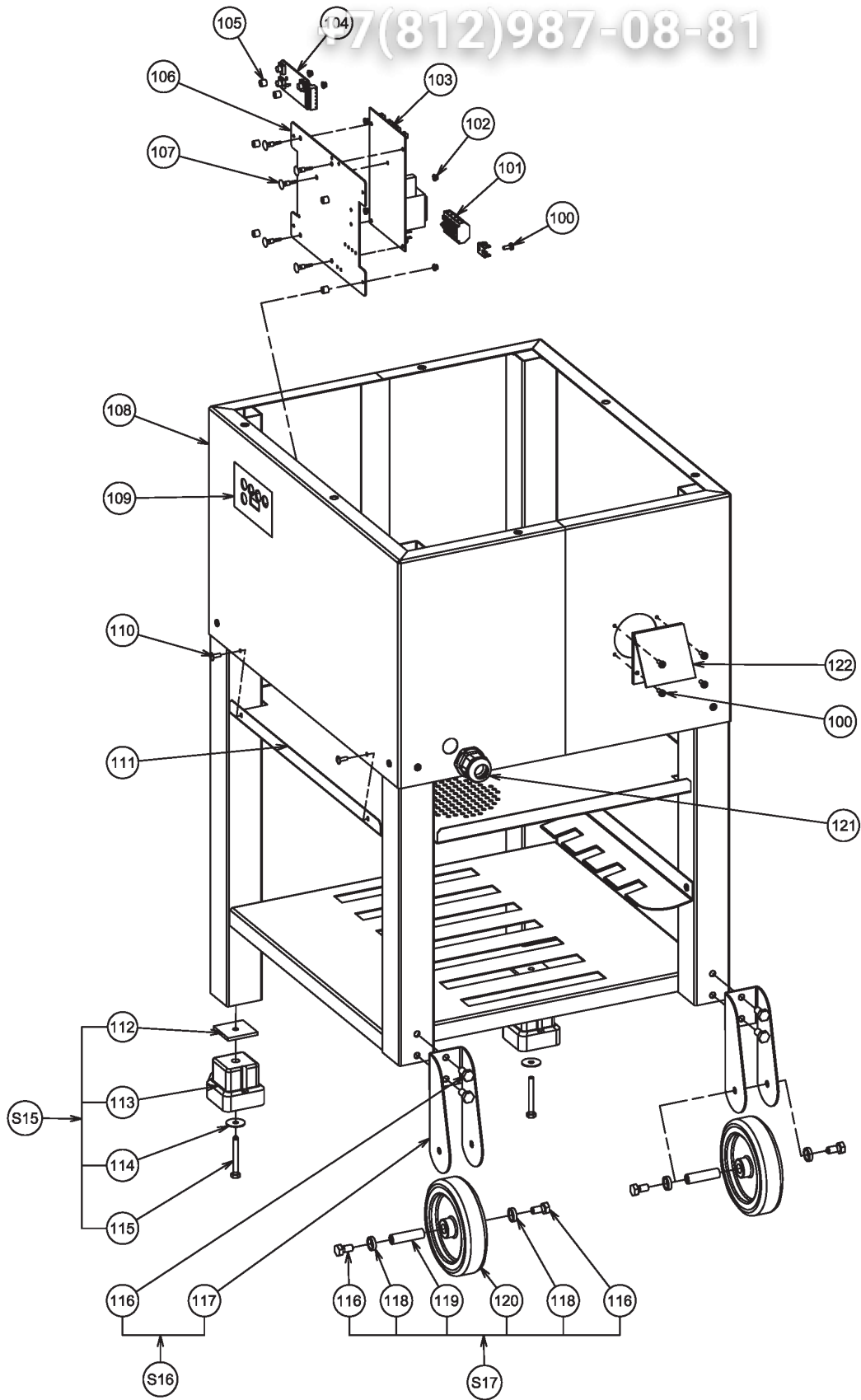
Зип Общепит

| Pos. | Spare Part | Alias Code | Repl. by | S | Info | Kit | Techn. Bulletin | Description | Notes |
|-------|--|------------|----------|---|------|-----|-----------------|---|--------|
| Model | All | | | | | | | | |
| Table | SPTR300 Page 2 Exploded view -Body/Mechanism | | | | | | | | |
| 0001 | 000000 | | | | | | | | See S1 |
| 0002 | 0D3732 | | | | D | | | NICKEL-ED PIVCT TR300 803 | |
| 0003 | 0D2331 | | | | D | | | SCREW H M12X45 SET X5 | |
| 0004 | 0KQ697 | | | | | | | PIN | |
| 0005 | 000000 | | | | | | | | See S2 |
| 0006 | 0HD007 | | | | | | | CHAVETA 5X5X36 TR-300; 5 PCS | |
| 0007 | 0D6442 | | | | | | | WASHER; 54X25X2,5 TR300 | |
| 0008 | 0HD030 | | | | | | | JUNTA ESTANQUEIDAD 70X8 TR-300 | |
| 0009 | 0KQ210 | | | S | A | | | PEG | |
| 0010 | 0D1520 | | | | | | | TR300 BEARING REF.32005 | |
| 0011 | 000000 | | | | | | | | See S3 |
| 0012 | 0D6573 | | | | | | | SPANNER; 4X4X22 H9 (JEU X5) | |
| 0013 | 0D1006 | | | | | | | JOINT LEVRE 25X33X6 TR300 X5 | |
| 0014 | 0D0004 | | | S | | | | BEARING; 6008 2RS | |
| 0015 | 0D3737 | | | | | | | STOP TR300 | |
| 0016 | 0D5187 | | | | D | | | BODY;WITH PACKING- TR300 | |
| 0017 | 0D0547 | | | | | | | ROD; 6 PCS | |
| 0017 | 0D0642 | | | | | | | NUT; 10 PCS | |
| 0017 | 0D2263 | | | | D | | | TOOTHED WASHER 8 GALVANISED STL SET X10 | |
| 0018 | 000000 | | | | | | | | See S4 |
| 0019 | 0KJ057 | | | | A | | | SPRING | |
| 0020 | 0U0652 | | | | D | | | WASHER; 10 PCS | |
| 0021 | 0D0499 | | | | | | | SCREW; SET 10PCS; M6X16 INOX | |
| 0022 | 000000 | | | | | | | | See S4 |
| 0023 | 0KQ524 | | | | | | | WASHER; 10 PCS BMX60 | |
| 0024 | 0D2344 | | | | | | | SCREW CHC 8X45 BM10 SET X10 | |
| 0025 | 000000 | | | | | | | | See S4 |
| 0026 | 000000 | | | | | | | | See S4 |
| 0027 | 0D1123 | | 0D7113 | | | | | S3/ST25 6201Z BEARING | |
| 0028 | 0D0513 | | | | | | | WASHER; 10 PCS | |
| 0029 | 0D0617 | | | | | | | SCREW CHC 6X15 | |
| 0030 | 0D0560 | | | | | | | SCREW | |
| 0031 | 0D0626 | | | | | | | WASHER; 10 PCS | |
| 0032 | 0D3730 | | | | D | | | MOTOR SUPPORT TR300 | |
| 0033 | 000000 | | | | | | | | |
| 0034 | 000000 | | | | | | | | |

| Pos. | Spare Part | Alias Code | Repl. by | S | Info | Kit | Techn. Bulletin | Description | Notes |
|-------|--|------------|----------|---|------|-----|-----------------|-----------------------------------|--------|
| Model | All | | | | | | | | |
| Table | SPTR300 Page 2 Exploded view -Body/Mechanism | | | | | | | | |
| 0035 | 0D0781 | | | | D | | | PSR50 DRIVE PULLEY (60 CYCLES) | |
| 0035 | 0KQ232 | | | | | | | GEAR | |
| 0036 | 0D3790 | | | | D | | | MOTOR; 3 230/400 50 ASSY TR300 | |
| 0037 | 033986 | | | | | + | | SCREW; 10 PCS | |
| 0037 | 033987 | | | | | + | | SCREW; 10 PCS | |
| 0037 | 0KQ511 | | | | | | | SCREW; 10 PCS | |
| 0038 | 000000 | | | | | | | | See S5 |
| 0039 | 0KQ281 | | 0D5191 | | A | | | SENSOR | |
| 0040 | 0D0614 | | | | D | | | SCREW TC 5X12 | |
| 0040 | 0KQ491 | | | | | | | WASHER; 10 PCS | |
| 0041 | 0HD044 | | | S | | | | BEARING; TR-300 | |
| 0042 | 0D1513 | | | | | | | TR300 WHEEL (38 TEETH) | |
| 0043 | 0HD046 | | | S | | | | BEARING; TR-300 | |
| 0044 | 0D0440 | | | | | | | B40 PLANETARY CROWN GEAR | |
| 0045 | 0D2248 | | | | | | | SCREW CHC M6X25 STL80 B40 SET X10 | |
| 0046 | 0D1517 | | 0D3470 | | | | | POULIE PLANETAIRE DEG TR300 | |
| 0047 | 0D5042 | | | | | | | WASHER; MB5 | |
| 0048 | 0D0002 | | | | | | | NUT | |
| 0049 | 0D1398 | | | S | A | | | BELT; TR300 | |
| 0050 | 0KJ007 | | | S | A | | | BALL BEARING; 6203 2 RS | |
| 0051 | 0D1514 | | | | | | | ARBRE PLANETAIRE TR300 | |
| 0052 | 0D0513 | | | | | | | WASHER; 10 PCS | |
| 0052 | 0D0615 | | | | | | | VIS C M6X16 INOX JEU X10 | |
| 0053 | 0D1515 | | | S | | | | TR300 PLANET. GEAR 15TEETH NM | |
| 0054 | 0D0627 | | | | | | | WASHER; 10 PCS | |
| 0054 | 0KQ494 | | | | | | | SCREW; 10 PCS | |
| 0055 | 0D1397 | | | | D | | | VIS 19 FILETS TR300 253A | |
| 0056 | 0KQ579 | | | | | | | SEAL 24X40X7, INOUT SHAFT; 5 PCS | |
| 0057 | 0D3728 | | | | D | | | SPACER 17X24X14 TR300 | |
| 0058 | 000000 | | | | | | | | See S7 |
| 0059 | 0D3216 | | | | | | | SCREW HM5X25 STLESS STL SET X10 | |
| 0059 | 0KQ491 | | | | | | | WASHER; 10 PCS | |
| 0060 | 0KJ007 | | | S | A | | | BALL BEARING; 6203 2 RS | |
| 0061 | 0KQ489 | | | | | | | KEY; 5 PCS, 5X5X18.5 MM | |
| 0062 | 000000 | | | | | | | | See S6 |
| 0063 | 0HD001 | | | | | | | ANILLO CIERRE 40I S4/S8(PAK10) | |

| Pos. | Spare Part | Alias Code | Repl. by | S | Info | Kit | Techn. Bulletin | Description | Notes |
|-------|--|------------|----------|---|------|-----|-----------------|---|---------|
| Model | All | | | | | | | | |
| Table | SPTR300 Page 2 Exploded view -Body/Mechanism | | | | | | | | |
| 0064 | 0D3729 | | | | D | | | DRIVE PULLEY TR300 | |
| 0065 | 0U0280 | | | | | | | INDEX PIN | |
| 0066 | 0KQ494 | | | | | | | SCREW; 10 PCS | |
| 0067 | 0D0627 | | | | | | | WASHER; 10 PCS | |
| 0068 | 0D1396 | | | | D | | | ROUE 18D TR300 | |
| 0069 | 0D3728 | | | | D | | | SPACER 17X24X14 TR300 | |
| 0070 | 0HD001 | | | | | | | ANILLO CIERRE 40I S4/S8(PAK10) | |
| 0071 | 0KJ007 | | | S | A | | | BALL BEARING; 6203 2 RS | |
| 0072 | 000000 | | | | | | | | See S8 |
| 0073 | 0U0282 | | | | D | | | BEARING | |
| 0074 | 0KQ489 | | | | | | | KEY; 5 PCS, 5X5X18.5 MM | |
| 0075 | 0D1395 | | | | D | | | ARBRE ACCOUPLEMENT TR300 | |
| 0076 | 000000 | | | | | | | | See S8 |
| 0077 | 0U0659 | | | | | | | SCREW; 4 PCS | |
| 0078 | 0KQ578 | | | | | | | SEALING; SET 5PCS | |
| 0079 | 0D0642 | | | | | | | NUT; 10 PCS | |
| 0079 | 0D1731 | | | | | | | CENTRING DEVICE | |
| 0079 | 0D2263 | | | | D | | | TOOTHED WASHER 8 GALVANISED STL SET X10 | |
| 0080 | 000000 | | | | | | | | See S9 |
| 0081 | 0D2328 | | | | | + | | SCREW; SET 10PCS; M8X16 | |
| 0082 | 0D1733 | | | | | | | FINGER | |
| 0083 | 0KQ483 | | | | | | | PEG; 10 PCS | |
| 0084 | 0D2711 | | | | D | | | HANDLE ASSY TR300 | |
| 0085 | 0D1145 | | | | | | | RING BP25 C10X14X16 | |
| 0086 | 000000 | | | | | | | | See S10 |
| 0087 | 000000 | | | | | | | | See S10 |
| 0088 | 000000 | | | | | | | | See S10 |
| 0089 | 0D0667 | | | | | | | BP25 PIN G01 3X26 CAN | |
| 0090 | 000000 | | | | | | | | See S10 |
| 0091 | 0D1400 | | | | | | | TR300 LOCKDOWN KNOB | |
| 0092 | 0D7372 | | | | | | | GAS SPRING; WITH SWIVEL JOINT | |
| 0093 | 0D0642 | | | | | | | NUT; 10 PCS | |
| 00S1 | 0D1399 | | | | D | | | TR300 LID ASSEMBLY. | |
| 00S2 | 0HD011 | | | S | | | | CONJ. EJE CENTRAL TR-300 | |
| 00S3 | 0HD031 | | | S | | | | KIT MANTTO.TR-300 | |
| 00S4 | 0D1278 | | | | D | | | ST25/BE20/TR300 TAKE UP ROLLER | |

| Pos. | Spare Part | Alias Code | Repl. by | S | Info | Kit | Techn. Bulletin | Description | Notes |
|------|------------|------------|----------|---|------|-----|-----------------|-----------------------------|-------|
| 00S5 | 0D6735 | | | | D | | | RELAY; STATIQUE NM EQ TR300 | |
| 00S6 | 0D6440 | | | | D | | | SHAFT ENTRAINEMENT EQ TR300 | |
| 00S7 | 0D1512 | | | | | | | TR300 COMPLETE SLEEVE | |
| 00S8 | 0D3866 | | | | | | | HUB ASSY TR300 | |
| 00S9 | 0D1676 | | | | D | | | STIRRUP; ASS. | |
| 0S10 | 0D1743 | | | | | | | KNOB | |
| 0S11 | 0D6443 | | | | D | | | CORPS; EQUIPE TR300 | |
| 0S12 | 0D0248 | | | | D | | | TR300 CENTRAL SUB ASSEMBLY | |



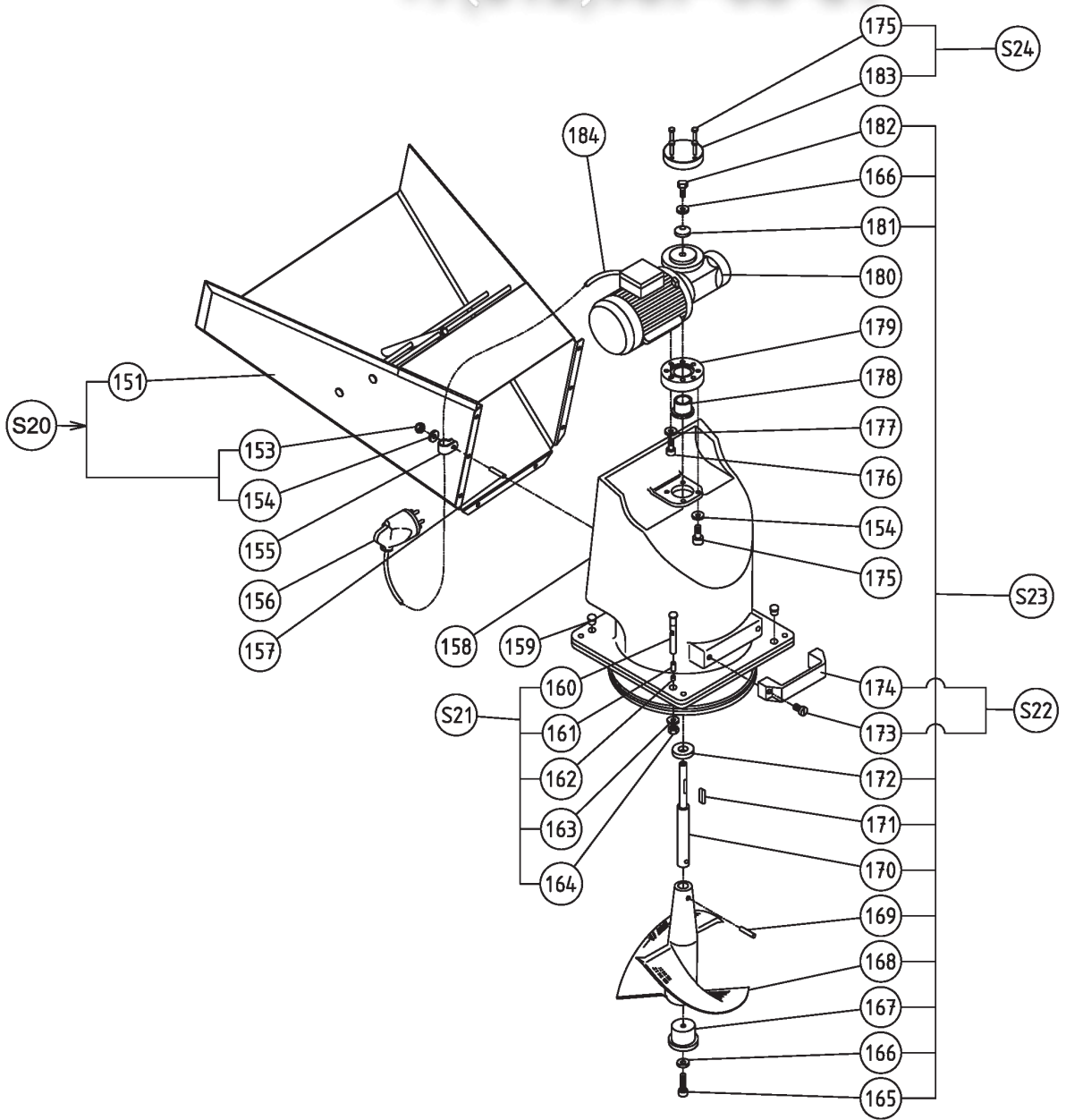
| Pos. | Spare Part | Alias Code | Repl. by | S | Info | Kit | Techn. Bulletin | Description | Notes |
|------|------------|------------|----------|---|------|-----|-----------------|--|---------|
| 0100 | 0D6724 | | | | | + | | SCREW; SET 10PCS; M4X10 | |
| 0101 | 0D5135 | | | | | | | TERMINAL; 5 PCS | |
| 0102 | 0D7383 | | | | | | | NUT; SET 10PCS; M3 | |
| 0103 | 0D7532 | | | | A | | | POWER BOARD | |
| 0104 | 0D7531 | | | | | | | CONTROLS PCB | |
| 0105 | 0D5633 | | | | D | | | SPACER; CI (JEU X10) | |
| 0106 | 000000 | | | | | | | | |
| 0107 | 0D2848 | | | | | | | PRINTED CIRCUIT FIXING SPACER (SET X6) | |
| 0108 | 000000 | | | | | | | | |
| 0109 | 0D7040 | | | | D | | | PLAQUE; MARQUE TR300 STD | |
| 0109 | 0D7126 | | | | D | | | FRONT PANEL; TR300 | |
| 0110 | 0KQ527 | | | | | | | SCREW; 10 PCS | |
| 0111 | 0D7530 | | | | D | | | BASE PLATE ASSEMBLY | |
| 0112 | 0D0541 | | | | | | | NUT; 10 PCS | |
| 0113 | 0U0566 | | | | | | | RUBBER FOOT(2")1&5/8"FITTING | |
| 0114 | 0KQ506 | | | | | | | WASHER; 10 PCS | |
| 0115 | 0D0598 | | | | D | | | SCREW; 10 PCS | |
| 0116 | 0D1709 | | | | | | | SCREW; 10 PCS | |
| 0117 | 000000 | | | | | | | | See S16 |
| 0118 | 0D2699 | | | | D | | | WHEEL SPACER TBX130 (SET X2) | |
| 0119 | 0D5919 | | | | | | | AXIS; ROUE TR250 | |
| 0120 | 0D5920 | | | | D | | | WHEEL; D125 PJO | |
| 0121 | 0D2073 | | | | | | | STUFFING BOX ASSY PL-CD4/8/13 | |
| 0122 | 0D1518 | | | | | | | SOCLE 20A 3P+T LEGRAND 903 41 | |
| 0S15 | 0D7373 | | | | | | | SLIDING SHOE; TR300 | |
| 0S16 | 0D7529 | | | | D | | | WHEEL SUPPORT | |
| 0S17 | 0D0152 | | | | | | | CASTOR; DIA.125/30; TBS120-140 | |

Зип Общепит

Vue éclatée Trémie automatique/Exploded view automatic hopper/ Explosionszeichnung Automatischer Selbstfütterer

zip.ru

+7(812)987-08-81



| Pos. | Spare Part | Alias Code | Repl. by | S | Info | Kit | Techn. Bulletin | Description | Notes |
|-------|--|------------|----------|---|------|-----|-----------------|--------------------------------|---------|
| Model | All | | | | | | | | |
| Table | SPTR300 Page 18 Exploded view automatic hopper | | | | | | | | |
| 0151 | 000000 | | | | | | | | See S20 |
| 0153 | 0D0583 | | | | | | | SET OF 10 PCS BLIND NUTS M6 | |
| 0154 | 0D0624 | | | | | + | | WASHER; SET 10PCS | |
| 0155 | 0D1177 | | | | | | | TR300 CABLE GRIP | |
| 0156 | 0D1519 | | | | | | | FICHE 20A 3P+T LEGRAND 556 35 | |
| 0157 | 0U0671 | | | | | | | SCREW; 10 PCS | |
| 0158 | 0D6449 | | | | D | | | ENTONNOIR EMBALLE; TR300 | |
| 0159 | 0D3601 | | | | | | | PLUG GPN 300 F9 DIAM.60MM | |
| 0160 | 0D3733 | | | | D | | | MAGNET PIN TR300 | |
| 0161 | 0KI586 | | | S | A | + | | MAGNET | |
| 0162 | 0KJ059 | | 0D3548 | | | | | PLUNGER | |
| 0163 | 0KQ490 | | | | D | | | WASHER; 10 PCS | |
| 0164 | 0KQ554 | | | | D | | | NUT; 10 PCS | |
| 0165 | 0D2329 | | | | | | | SCREW H M8X30 SET X10 | |
| 0166 | 0KQ524 | | | | | | | WASHER; 10 PCS BMX60 | |
| 0167 | 0HD028 | | | | | | | GUIA INFERIOR TR300 | |
| 0168 | 000000 | | | | | | | | See S23 |
| 0169 | 0D0675 | | | | | | | PIN G01 8X45 INOX; 2 PCS | |
| 0170 | 000000 | | | | | | | | See S23 |
| 0171 | 0KQ486 | | | | | | | KEY; 10 PCS, 6X6X30 MM | |
| 0172 | 0D3861 | | | | D | | | THRUST WASHER STLESS STL TR300 | |
| 0173 | 0D6448 | | | | D | | | SCREW; C M8X20 INOX (JEU X10) | |
| 0174 | 0D1443 | | | | | | | BLACK HANDLE M443140 | |
| 0175 | 0D0595 | | | | | | | SCREW; 10 PCS | |
| 0176 | 0D0657 | | | | D | | | SCREW; 10 PCS | |
| 0177 | 0D2876 | | | | | | | WASHER W6 SET X10 | |
| 0178 | 0D1401 | | | | | | | COUSSINET COL 28X33X22 BP25 | |
| 0179 | 0D1742 | | | | | | | FLANGE | |
| 0180 | 0D1441 | | | | | | | TR300 AUTOMATIC HOPPER MOTOR | |
| 0181 | 0D1620 | | | | | | | WASHER | |
| 0182 | 0D0507 | | | | | | | SCREW; 10 PCS | |
| 0183 | 000000 | | | | | | | | See S24 |
| 0184 | 0D3936 | | | | D | | | SHEATH; W/CABLE | |
| 0S20 | 0D0860 | | | | D | | | TR300 WEIR ASSEMBLY | |
| 0S21 | 0D1446 | | | | | | | TR300 EQUIPPED MAGNET | |
| 0S22 | 0D3791 | | | | | | | COMPLETE HANDLE TR300 | |

Зип Общепит

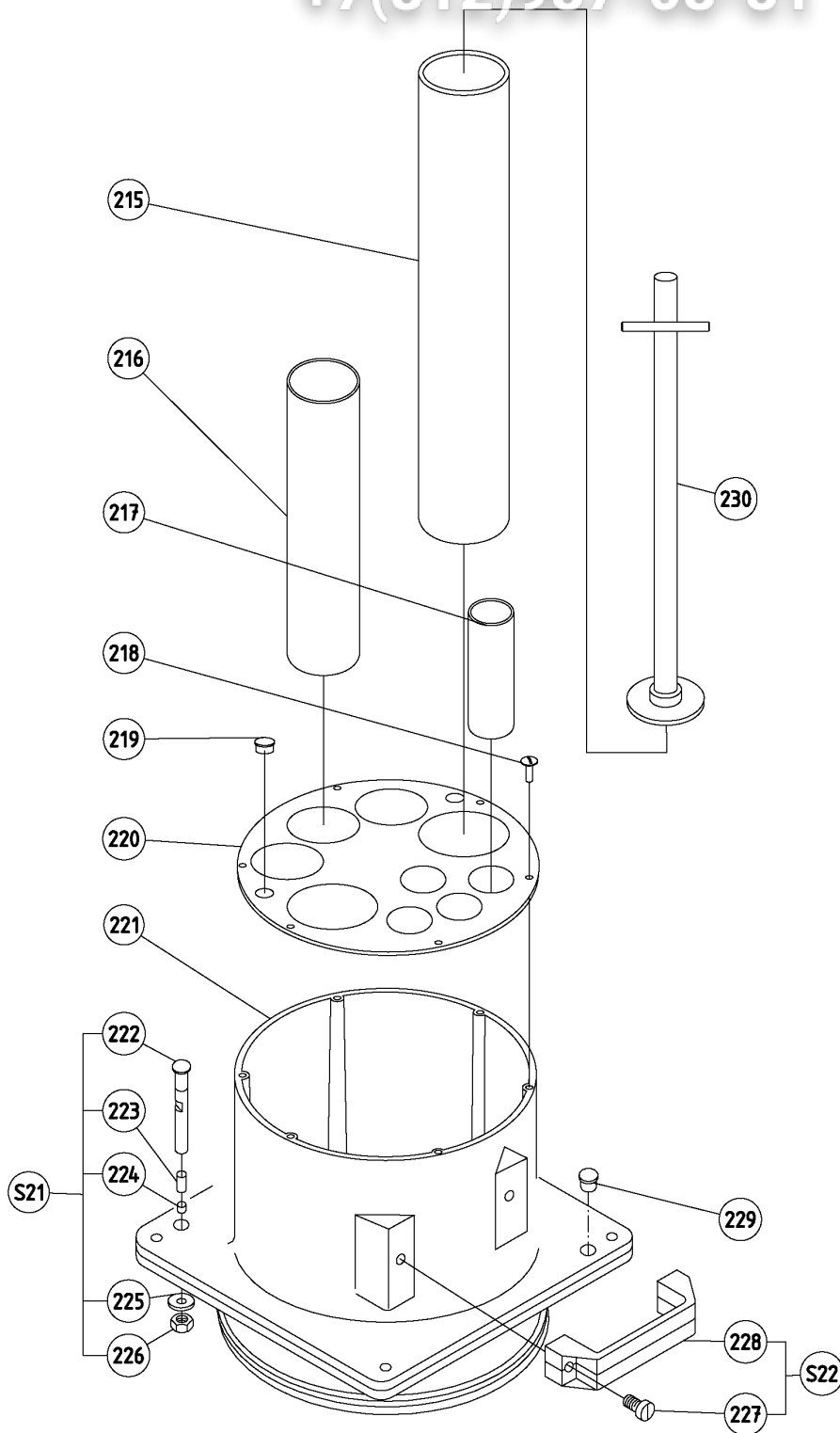
Model All
Table SPTR300 Page 18 Exploded view automatic hopper

| Pos. | Spare Part | Alias Code | Repl. by | S | Info | Kit | Techn. Bulletin | Description | Notes |
|------|------------|------------|----------|---|------|-----|-----------------|------------------|-------|
| 0S23 | 0D1511 | | | | | | | HELICE NM TR300 | |
| 0S24 | 0D6147 | | | | D | | | CHAPEAU EQ TR300 | |

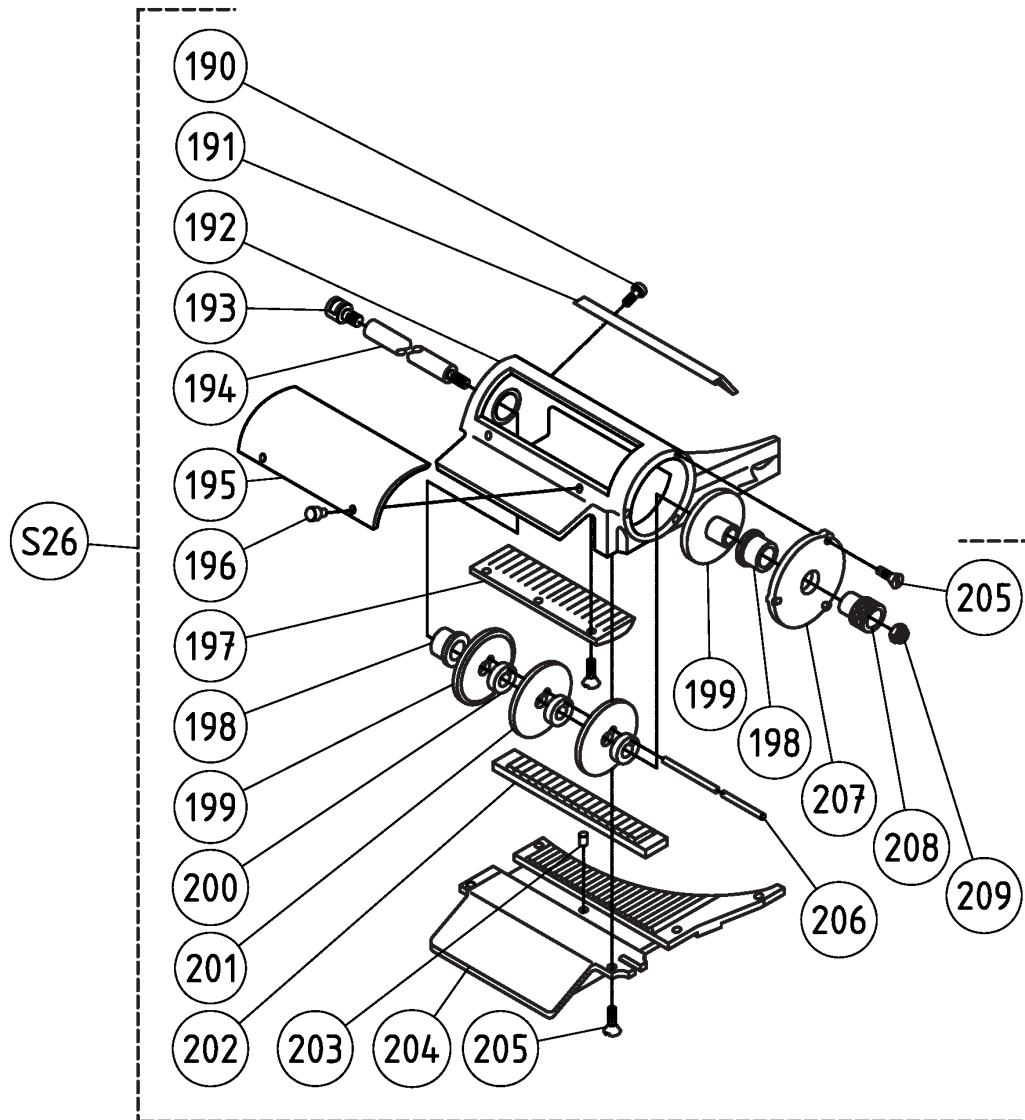
+7(812)987-08-81

Vue éclatée Trémie Légumes longs/Exploded view Long Vegetable Hopper/ Explosionszeichnung Fütterer Langes Gemüse/ Nomenclatura Tramoggia Verdure Lunghe/ Nomenclatura Tolva Hortalizas Alargadas/ Sprängskiss Matare För Långa Grönsaker

+7(812)987-08-81



| Pos. | Spare Part | Alias Code | Repl. by | S | Info | Kit | Techn. Bulletin | Description | Notes |
|------|------------|------------|----------|---|------|-----|-----------------|-------------------------------|---------|
| 0215 | 000000 | | | | | | | | See S28 |
| 0216 | 000000 | | | | | | | | See S28 |
| 0217 | 000000 | | | | | | | | See S28 |
| 0218 | 0D0523 | | | | | | | SCREW; 10 PCS | |
| 0219 | 0U0298 | | | | | | | BUNG | |
| 0220 | 000000 | | | | | | | | See S28 |
| 0221 | 000000 | | | | | | | | See S28 |
| 0222 | 0D3733 | | | | D | | | MAGNET PIN TR300 | |
| 0223 | 0K1586 | | | S | A | + | | MAGNET | |
| 0224 | 0KJ059 | | 0D3548 | | | | | PLUNGER | |
| 0225 | 0KQ490 | | | | D | | | WASHER; 10 PCS | |
| 0226 | 0KQ554 | | | | D | | | NUT; 10 PCS | |
| 0227 | 0D6448 | | | | D | | | SCREW; C M8X20 INOX (JEU X10) | |
| 0228 | 0D1443 | | | | | | | BLACK HANDLE M443140 | |
| 0229 | 0D3601 | | | | | | | PLUG GPN 300 F9 DIAM.60MM | |
| 0230 | 0D1867 | | | | D | | | LONG HOPPER PUSHER TR300 | |
| 0S21 | 0D1446 | | | | | | | TR300 EQUIPPED MAGNET | |
| 0S22 | 0D3791 | | | | | | | COMPLETE HANDLE TR300 | |



| Pos. | Spare Part | Alias Code | Repl. by | S | Info | Kit | Techn. Bulletin | Description | Notes |
|------|------------|------------|----------|---|------|-----|-----------------|--|---------|
| 0190 | 0D2894 | | | | D | | | METAL SCREW 5X8 STLESS STL (SET X10) | |
| 0191 | 000000 | | | | | | | | See S26 |
| 0192 | 000000 | | | | | | | | See S26 |
| 0193 | 0D1587 | | | | | | | AXIS | |
| 0194 | 0D1588 | | | | | | | SHAFT | |
| 0195 | 000000 | | | | | | | | See S26 |
| 0196 | 000000 | | | | | | | | See S26 |
| 0197 | 0D1444 | | | | D | | | PEIGNE 10 EQ F310 TR300 | |
| 0197 | 0D1445 | | | | D | | | PEIGNE 8 EQ F308 TR300 | |
| 0197 | 0D6451 | | | | D | | | PEIGNE; 6 EQ F306 TR300 | |
| 0197 | 0KQ558 | | | | | | | SCREW; 10 PCS | |
| 0198 | 0D1401 | | | | | | | COUSSINET COL 28X33X22 BP25 | |
| 0199 | 0D1402 | | | | D | | | FLASQUE DISQUE TR300 | |
| 0200 | 0D3938 | | | | | | | WEDGE | |
| 0200 | 0D6452 | | | | D | | | THICKNESS; CALE TR300 6MM | |
| 0200 | 0D6463 | | | | D | | | COLUMN; TABLE XBM-XBE-XBB20 | |
| 0201 | 0D1403 | | | | | | | DISQUE TR300 | |
| 0202 | 0D1589 | | | | | | | GUIDE | |
| 0202 | 0D3736 | | | | D | | | GUIDE SLIPPER TR300 10MM | |
| 0202 | 0D6454 | | | | D | | | SEMELLE GUIDE; TR300 6MM | |
| 0203 | 0D3422 | | | | | | | PIN GO5 4X10 STLESS STL SET X10 | |
| 0204 | 000000 | | | | | | | | See S26 |
| 0205 | 0D2228 | | | | | | | SCREW FB M5X12 STLESS STL MV50 SET X10 | |
| 0206 | 0D3939 | | | | | | | STEM | |
| 0207 | 0D3735 | | | | D | | | SHOTBLASTED FR FRIES ACCSSRY FLANGE TR30 | |
| 0208 | 0D1404 | | | | | | | ECROU MOLETE TR300 | |
| 0209 | 0U0651 | | | | | | | SELF-LOCK NUT; M10, 10 PCS | |
| 0S26 | 653069 | | | | | | | CHIP EQUIPMENT 10X10 MM | |
| 0S26 | 653074 | | | | | | | CHIP EQUIPMENT 8X8 MM | |
| 0S26 | 653076 | | | | | | | CHIP EQUIPMENT 6X6 MM | |