

Зип Общепит 
Wexiödisk
vsezip.ru

+7(812)987-08-81
**HOOD TYPE DISHWASHER
WD-7**

(translation of the original documentation)

Spare parts manual



WD67r1

| | |
|--|----------|
| 1. Spare parts | 1 |
| 1.1 External details | 2 |
| 1.2 Hood lift | 4 |
| 1.3 Tank details | 6 |
| 1.4 Wash and rinse system | 8 |
| 1.5 Water connections booster heater | 10 |
| 1.6 Booster heater 400V 9kW | 12 |
| 1.7 Booster heater (option) | 14 |
| 1.8 Booster heater (option) | 18 |
| 1.9 Electric cubicle | 22 |
| 1.10 Booster pump (option) | 24 |
| 1.11 Valve packet 301773 | 26 |
| 1.12 Valve packet 301783 | 28 |
| 1.13 Emptying pump (option) | 30 |
| 1.14 Breaktank (option) | 32 |
| 1.15 Backflow prevention device (option) | 34 |
| 1.16 Support for bakery plates (option) | 36 |
| 1.17 Rebuilding kit 460 basket (option) | 38 |
| 1.18 Heat recovery by the exhausted steam (option) | 40 |
| 1.19 Heat recovery by the drain water (option) | 42 |
| 1.20 Pump 1225 | 44 |
| 1.21 Pump 2HM4T/A | 46 |

vsezip.ru

+7(812)987-08-81

1. Spare parts



Switch off the machine immediately in the event of a fault or malfunction. The machine must only be serviced by trained engineers. The machine must be serviced by a person authorised to do so by the manufacturer. Use original spare parts. Contact an authorised service company to draw up a programme of preventative maintenance. Dangerous situations may arise if the instructions above are not followed.

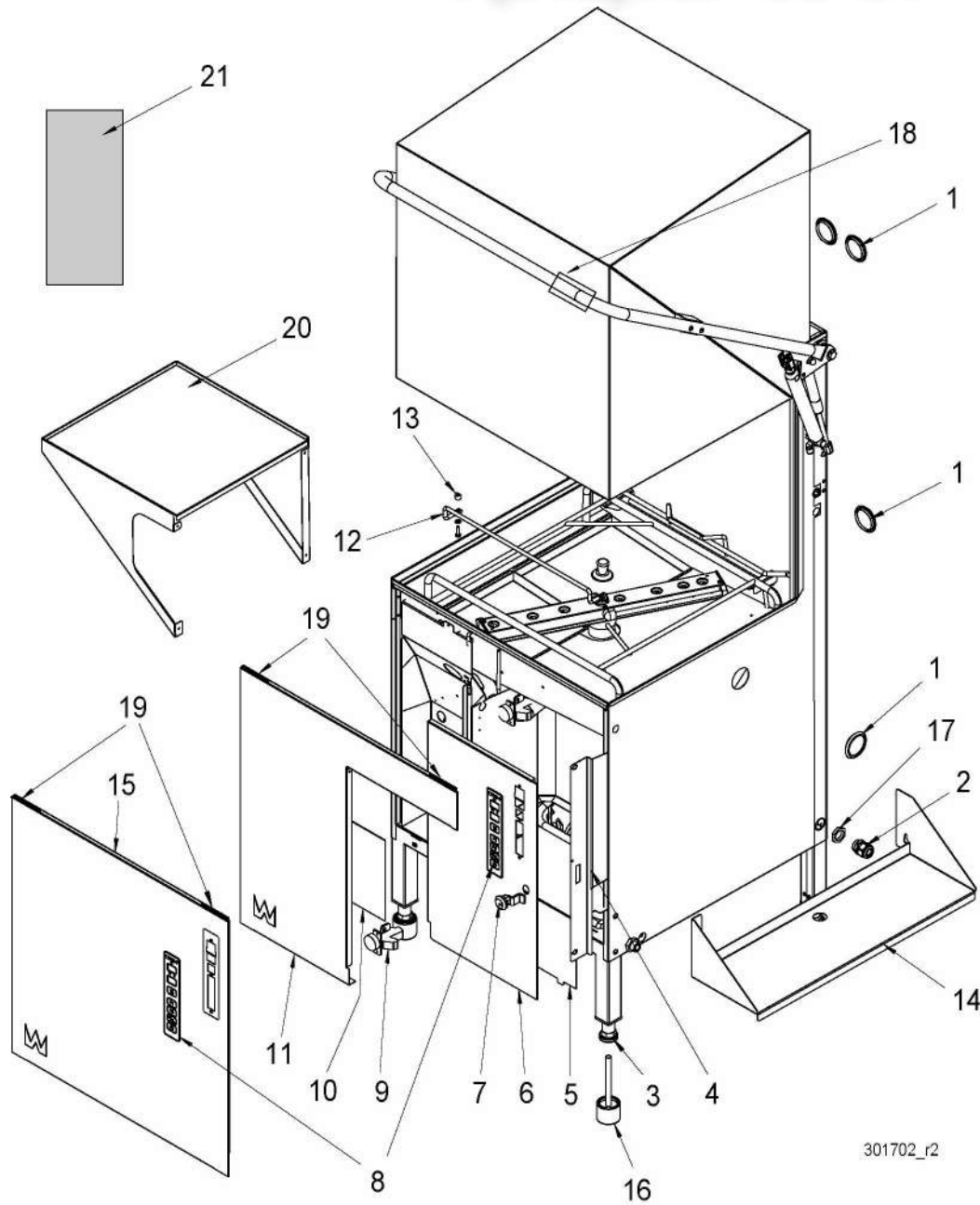
When a position does not have item numbers, it has its own section in the spare parts manual.

Positions that have a * in front of the name is included in a complete article but can also be purchased separately.

1.1 External details

vsezip.ru

+7(812)987-08-81



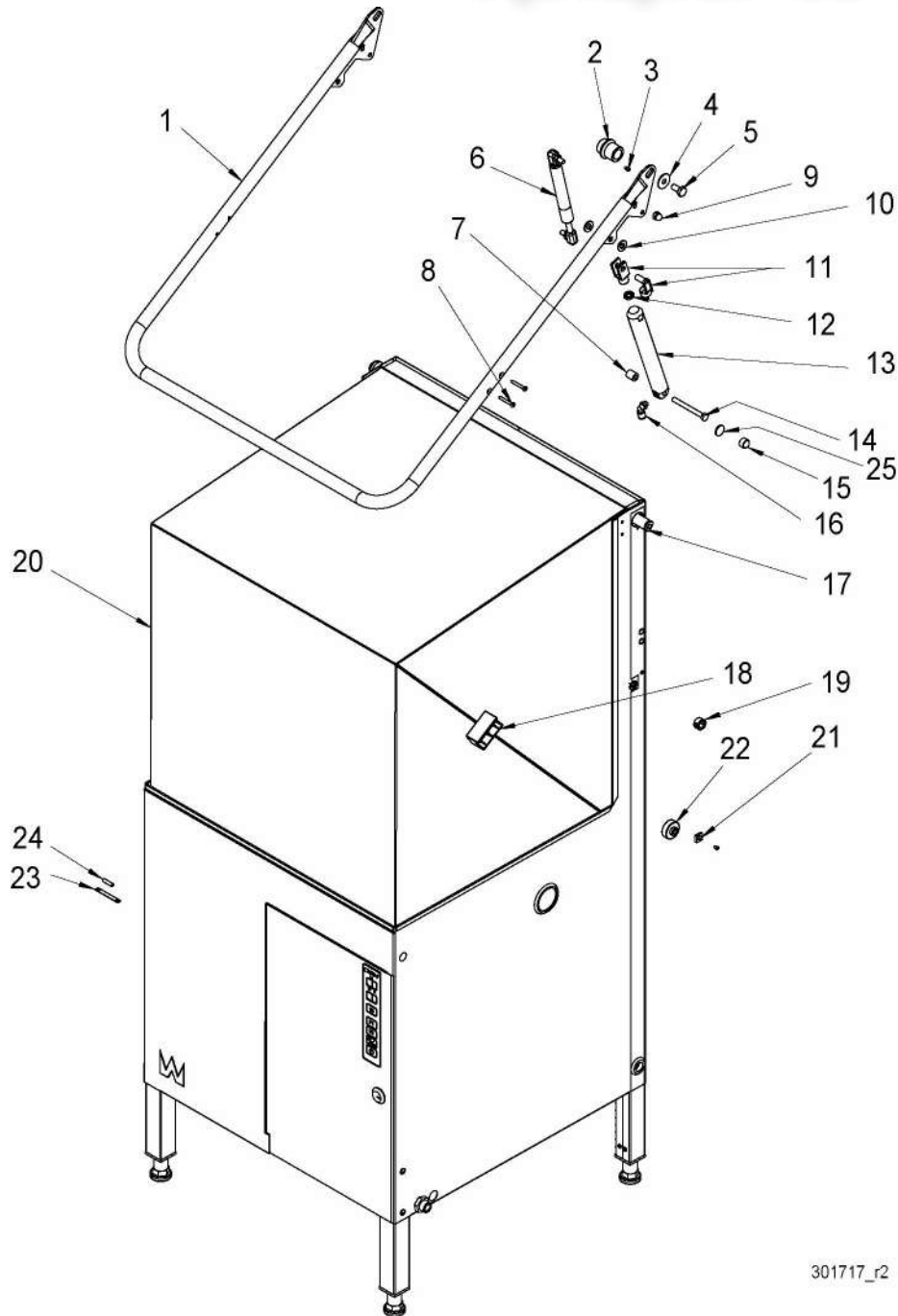
301702_r2

| External details | | |
|------------------|-------------|---|
| Pos | WD no | Description |
| 1 | WD718.1050 | Plug |
| 2 | WD51476114 | Cable screw cap 25 polyamid |
| 3 | WD718.0305 | Foot grey 40x40 adjustable |
| 3 | WD42820.31 | Foot blade (Option) |
| 4 | WD300684.31 | Cabinet (Option) |
| 5 | WD300958.31 | Base-cabinet (Option) |
| 6 | WD26923.31 | Panel plate (Option) |
| 7 | WD792.0220 | Cylinder lock (Option) |
| 8 | WD301060.03 | Panel sign WD7 |
| 8 | WD301736.01 | Panel sign WD-7 Metos |
| 8 | WD301060.04 | Panel sign WD-7 hoodautomaticity (Option) |
| 8 | WD301736.02 | Panel sign WD-7 Metos hoodautomaticity (Option) |
| 9 | WD790.0301 | Hinge door (Option) |
| 10 | WD724.0502 | Plastic case A4 |
| 11 | WD26991.31 | Front plate (Option) |
| 12 | WD44880.31 | Side support O494 |
| 13 | WD44930.31 | Distance basket frame rail |
| 14 | WD27316.31 | Shelf left side (Option) |
| 14 | WD27316.32 | Shelf right side (Option) |
| 15 | WD26920.01 | Front plate right with bumping |
| 15 | WD26920.02 | Front plate left without bumping (Option) |
| 15 | WD26920.03 | Front plate right without bumping |
| 16 | WD46202.01 | Extension leg (Option) |
| 17 | WD51476534 | Locking nut 25 polyamid |
| 18 | WD45941.31 | Model sign WD |
| 18 | WD42868.31 | Model sign Metos |
| 18 | WD42998.31 | Model sign Rhima |
| 18 | WD46094.31 | Model sign Ravimo / Shark |
| 19 | WD719.0512 | Sealing strip 8x2mm |
| 20 | WD27362.31 | Sideboard |
| 21 | WD724.6006 | Quick reference WD-6/WD-7 without hood lift |
| 21 | WD724.6005 | Quick reference WD-6/WD-7 with hood lift (Option) |
| 21 | WD724.6024 | Quick guide to WD-6/WD-7 without hood lift and with drain pump (optional) |
| 21 | WD724.6025 | Quick guide to WD-6/WD-7 with hood lift and with drain pump (optional) |

1.2 Hood lift

vsezip.ru

+7(812)987-08-81



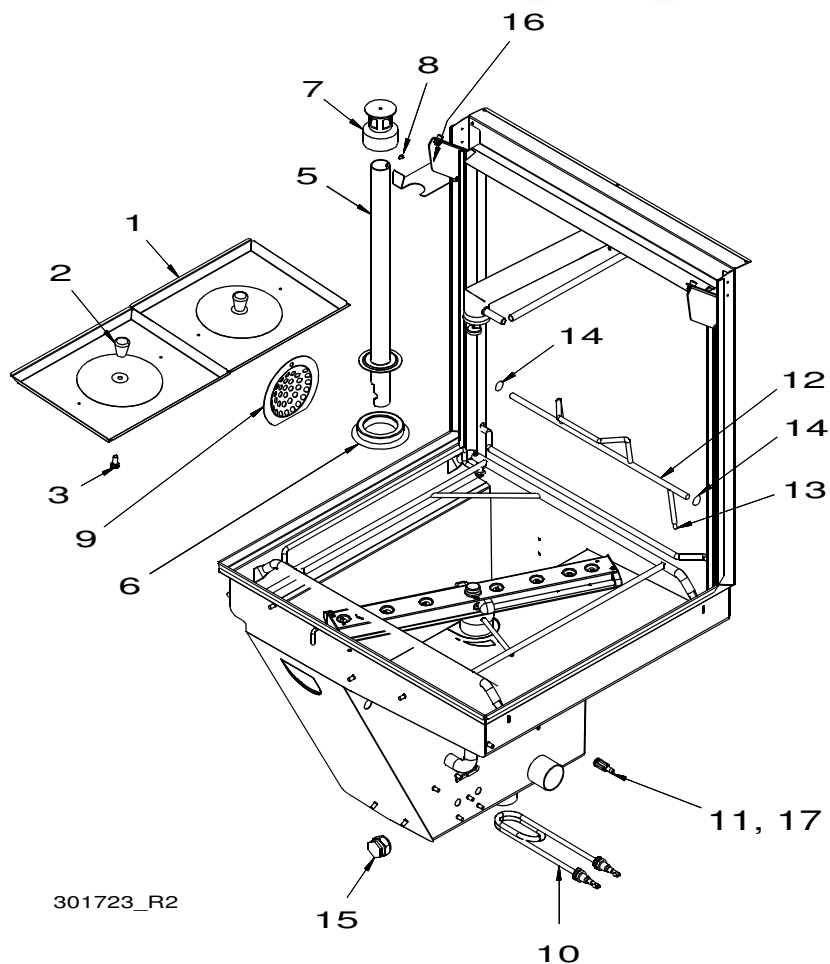
301717_r2

| Hood lift | | |
|-----------|------------|---|
| Pos | WD no | Description |
| 1 | WD38833.01 | Lifting handle op |
| 2 | WD45256.31 | Bearing liftlamp |
| 3 | WD700.0207 | Screw MC6S M4x6 A2 |
| 4 | WD45310.31 | Washer |
| 5 | WD700.0148 | Screw M6S M10x20 |
| 6 | WD713.0512 | Gas spring800N ball joint |
| 6 | WD713.0506 | Gas spring 500N protection cap (option) |
| 7 | WD701.0110 | Distance cylinder hold (Option) |
| 8 | WD700.0824 | Screw KFSS 4.8x38 A2 |
| 9 | WD700.1105 | Nut RMHM M8 A2 |
| 10 | WD701.0115 | Plastic washer 10.5x21x3.0mm (Option) |
| 11 | WD737.0150 | Fork link (Option) |
| 12 | WD737.0153 | Nut M6M M10x1.25 fzb (Option) |
| 13 | WD737.0180 | Cylinder (Option) |
| 14 | WD46217.31 | Pin bolt for hood lift (Option) |
| 15 | WD718.1108 | Nut cover (Option) |
| 16 | WD706.0915 | L-coupling (Option) |
| 17 | WD38828.31 | Axle hood lift |
| 18 | WD41223.31 | Hood bearing WD6/7 |
| 19 | WD61701519 | Conduit entry |
| 20 | WD25941.01 | Hood |
| 21 | WD40016.31 | * Sliding block |
| 22 | WD41224.31 | * Sliding roller |
| 23 | WD46521.31 | * Magnet holder |
| 24 | WD602.0551 | * Magnet |
| 25 | WD700.0906 | Nut ML6M M10 A2 |

1.3 Tank details

vsezip.ru

+7(812)987-08-81



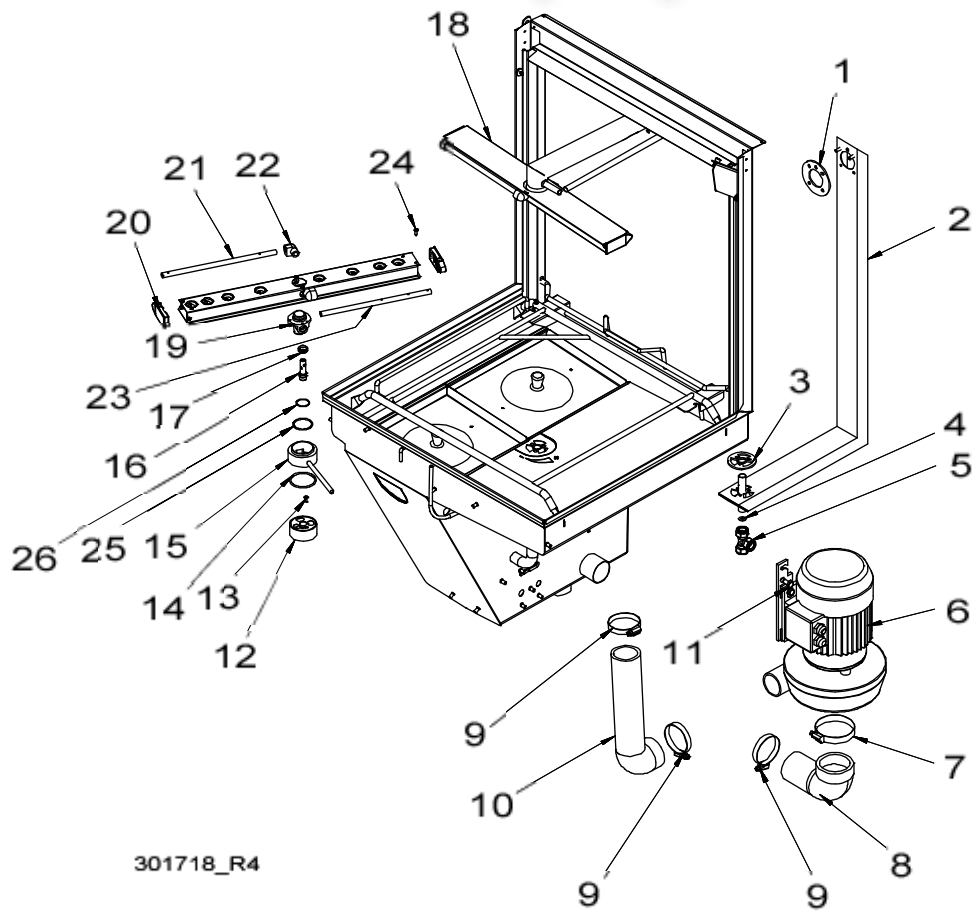
301723_R2

| Tank details | | |
|--------------|-------------|------------------------------|
| Pos | WD no | Description |
| 1 | WD301689.01 | Chem strainer |
| 2 | WD718.0826 | * Nob |
| 3 | WD700.2864 | * Screw M6SF M8x25 A2 |
| 4 | WD38210.01 | Level pipe |
| 5 | WD44643.01 | * Level pipe |
| 6 | WD719.4036 | * Level pipe sealing |
| 7 | WD41225.31 | * Foam remover |
| 8 | WD700.0607 | * Screw MCS M4x6 A2 |
| 9 | WD32422.31 | Pumpstrainer chemical |
| 10 | WD604.1805 | Element 1800W 230V |
| 11 | WD45152.31 | Dosage connection, floating |
| 12 | WD304150.75 | Breaker with axle (Option) |
| 13 | WD602.0551 | * Magnet round 6x50 (Option) |
| 14 | WD701.2010 | Stop collar ø10mm |
| 15 | WD705.1022 | Coupling test pressure |
| | WD705.0323 | * Clamping sleeve 22mm |
| | WD705.0207 | * Nut Lk 63 22 |
| 16 | WD46198.31 | Level pipe support (Option) |
| 17 | WD43861.31 | O-ring |

1.4 Wash and rinse system

vsezip.ru

+7(812)987-08-81

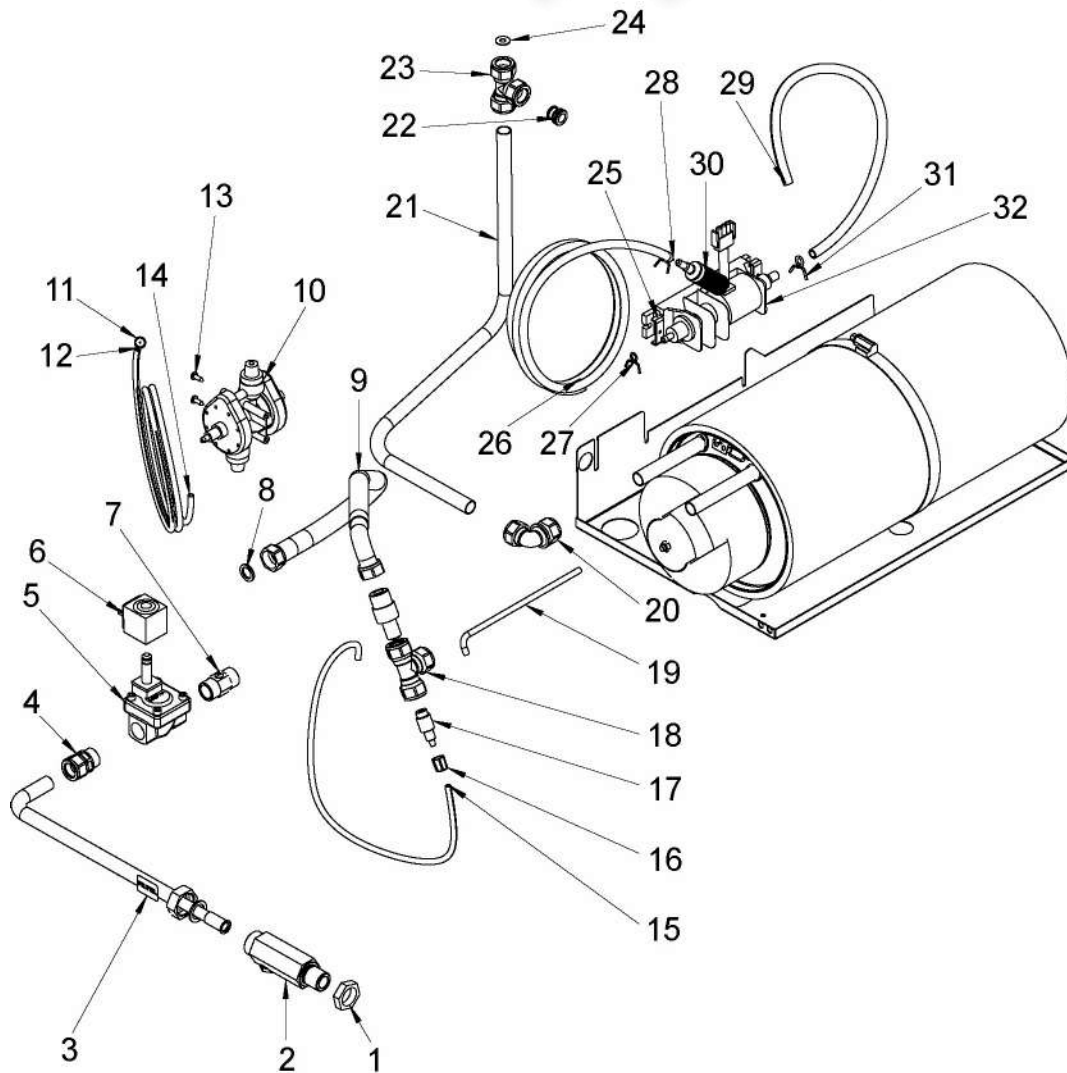


301718_R4

| Wash and rinse system | | |
|-----------------------|-------------|----------------------------------|
| Pos | WD no | Description |
| 1 | WD44625.31 | Rubber stopping upper rinse pipe |
| 2 | WD39459.01 | Main pipe |
| 3 | WD44626.31 | Rubber stopping lower rinse pipe |
| 4 | WD46188.31 | Adjusting plate |
| 5 | WD705.2706 | T-Coupling |
| 6 | WD301169.01 | Pump with attachment , cpl |
| 7 | WD714.0112 | Hose clamp 60-80 mm |
| 8 | WD36364.31 | Pump connection inlet |
| 9 | WD714.0111 | Hose clamp 50-70 mm |
| 10 | WD38232.31 | Pump connection |
| 11 | WD700.0132 | Screw M6S M8x16 A2 |
| 12 | WD45232.01 | Connectioncase throttle |
| 13 | WD700.0609 | Screw MCS M4x10 A2 |
| 14 | WD719.1092 | O-ring |
| 15 | WD45277.01 | Throttle |
| 16 | WD44600.31 | Neck |
| 17 | WD719.0111 | V-ring V16S |
| 18 | WD27252.01 | Rinse arm |
| 19 | WD46852.01 | * Rinse arm bearing, complete |
| 20 | WD38719.31 | * End cover |
| 21 | WD45136.01 | * Rinse pipe |
| 22 | WD44969.31 | * Rinse pipe attachment |
| 23 | WD45136.02 | * Rinse pipe |
| 24 | WD700.2001 | * Screw RXS Z T4.2x9.5 A4 |
| 25 | WD45233.31 | Stop washer throttle |
| 26 | WD45309.31 | Spacer for damper |

1.5 Water connections booster heater

+7(812)987-08-81

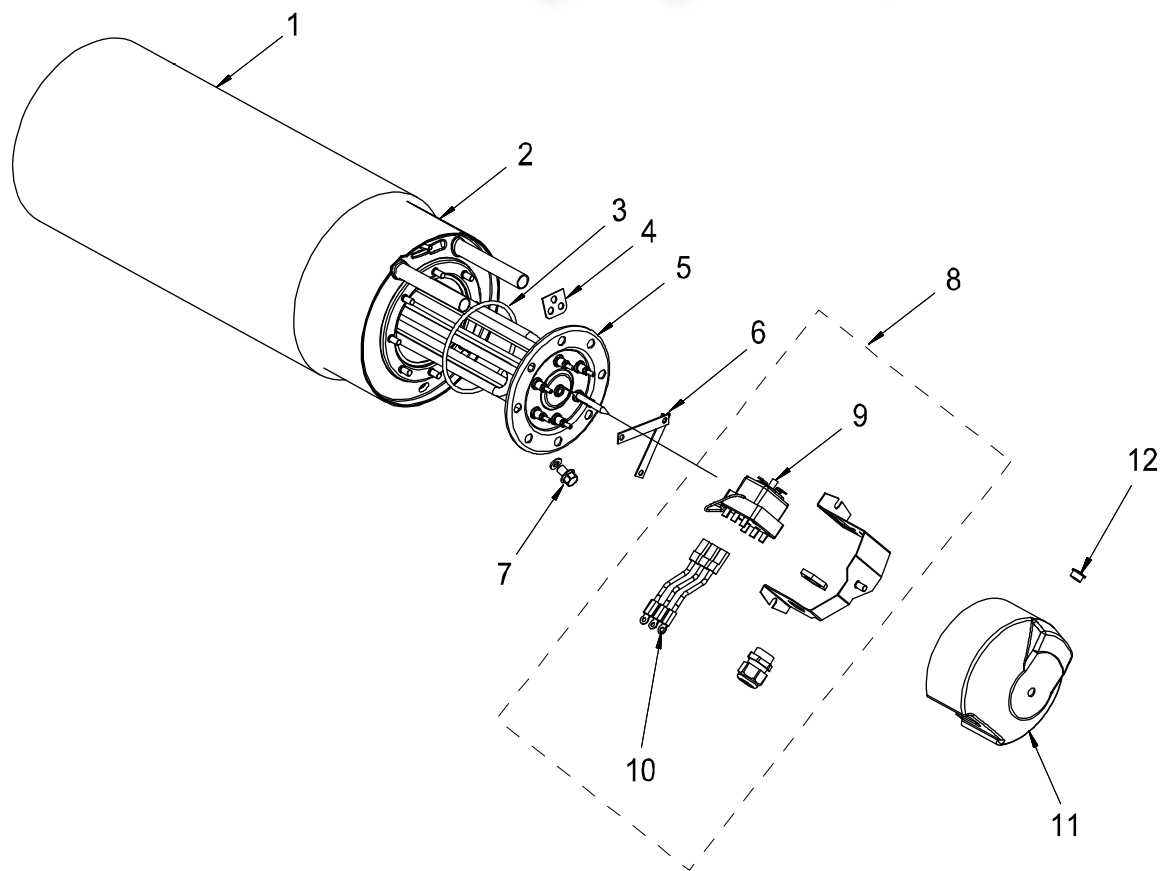


301722_R3

| Water connections booster heater vsezip.ru | | |
|--|-------------|------------------------------------|
| Pos | WD no | Description |
| 1 | WD706.0203 | Nut R 1/2" |
| 2 | WD39325.01 | Incoming water connection |
| | WD40301.01 | * Strainer w supporting housing |
| | WD701.0123 | * Packing 24x17x2 |
| 2 | WD741.7019 | Incoming water connection (Option) |
| | WD706.1303 | * Cap (Option) |
| | WD706.0809 | * Nipple (Option) |
| | WD701.0123 | * Packing (Option) |
| 3 | WD45234.31 | Marksign "FILTER" |
| 4 | WD705.0915 | Coupling 302-15xr15 |
| | WD705.0405 | * Clamping sleeve |
| | WD705.0205 | * Nut LK 63-15 |
| 5 | WD729.1540 | Solenoid valve, housing |
| 6 | WD729.1519 | Coil 24V/50 10W |
| 7 | WD709.0809 | Ball valve |
| 8 | WD701.0122 | Packing 1/2" |
| 9 | WD719.5024 | Slang RFR F1/2"xFC1/2" L=510 |
| 10 | WD716.0401 | Drying agent pump N6 |
| 11 | WD716.0404 | Strainer |
| 12 | WD42946.31 | Reinforcement pin |
| 13 | WD700.2001 | Screw RXS Z T4.2x9.5 A4 |
| 14 | WD716.0402 | Hose 4x6 L=2m |
| 15 | WD716.0405 | Pressure hose 4x6 L=0,6m |
| 16 | WD716.0403 | Attachment nut N6 |
| 17 | WD45985.31 | Connection nipple |
| 18 | WD705.2205 | Coupling 15mm, brass |
| 19 | WD45994.31 | Tube drying agent connection |
| 20 | WD705.1607 | Coupling, angeled 1/2" x 15 |
| | WD705.0420 | * Clamping sleeve 15mm |
| | WD705.0316 | * Nut 15mm |
| 21 | WD301069.31 | Tube booster heater final rinse |
| 22 | WD705.0421 | Clamping sleeve 15-10 |
| 23 | WD705.2215 | T-Coupling15mm |
| | WD705.0420 | * Clamping sleeve 15mm |
| | WD705.0316 | * Nut 15mm |
| 24 | WD46188.31 | Adjusting plate |
| 25 | WD41115.32 | Clamp detergent pump |
| 26 | WD719.0305 | Hose PVC 6x9 L=2m |
| 27 | WD714.0408 | Hose clamp Remin RSF 8-1 |
| 28 | WD42887.31 | Reinforcement pin |
| 29 | WD719.0307 | Hose PVC 7-10 L=0,5m |
| 30 | WD716.0504 | Detergent pump strainer |
| 31 | WD714.0411 | Hose clamp Remin RSF 11-1 |
| 32 | WD716.0501 | Detergent pump GRI 14825 |
| | WD716.0506 | * Hose nipple pressure |
| | WD716.05061 | * Hose nipple soak |

1.6 Booster heater 400V 9kW vsezip.ru

+7(812)987-08-81



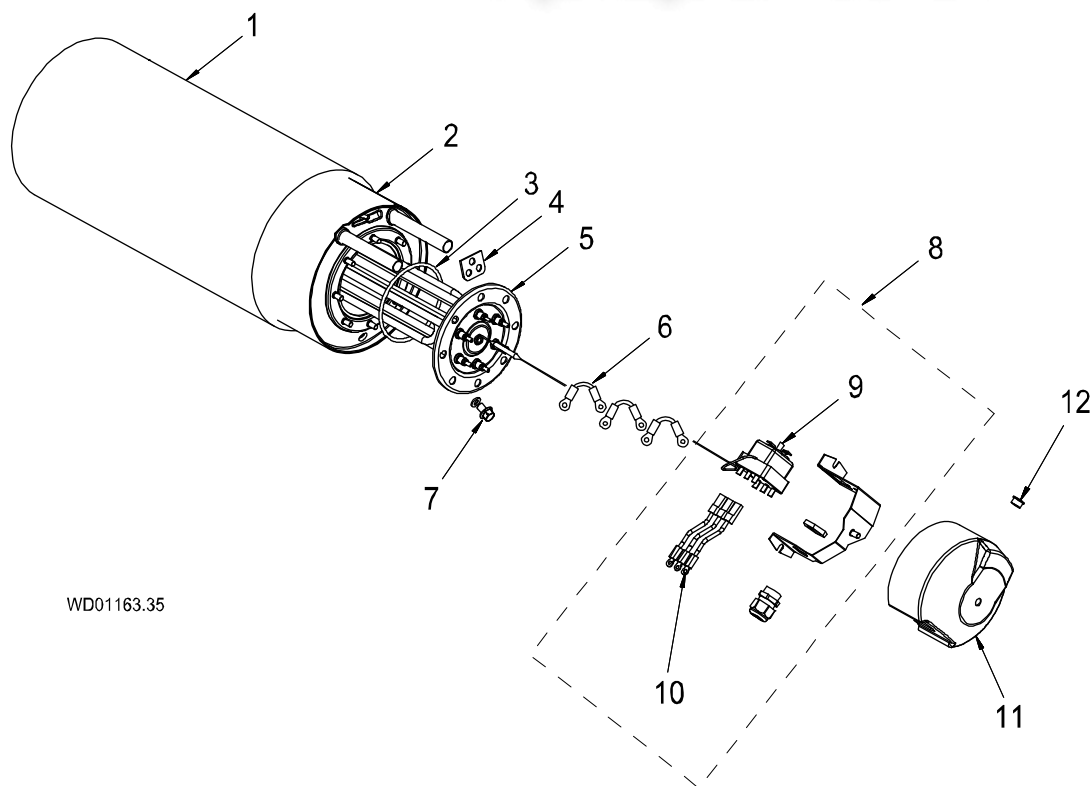
WD01163.36

| Booster heater 400V 9kW | | |
|--------------------------------|--------------|---|
| Pos | WD no | Description |
| | WD01163.36 | Booster heater 400V 9kW |
| 1 | WD809.0903 | * Heat insulation booster heater |
| 2 | WD01162.04 | * Container booster heater (E) |
| 3 | WD719.1090 | * O-ring |
| 4 | WD44203.31 | * Attachment temp.sensor |
| 5 | WD30835.01 | * Element 9 kW, 230/400 V |
| 6 | WD04920.31 | * Copper clamp |
| 7 | WD700.2501 | * Collar screw + Gasket |
| 8 | WD302113.01 | * Overheating protection tankelement 400V |
| 9 | WD734.0110 | ** Overheating protection |
| 10 | WD670.8244 | ** Coupling conductor |
| 11 | WD301321.31 | Protection cover |
| 12 | WD51476571 | End plug |

1.7 Booster heater (option)

vsezip.ru

+7(812)987-08-81

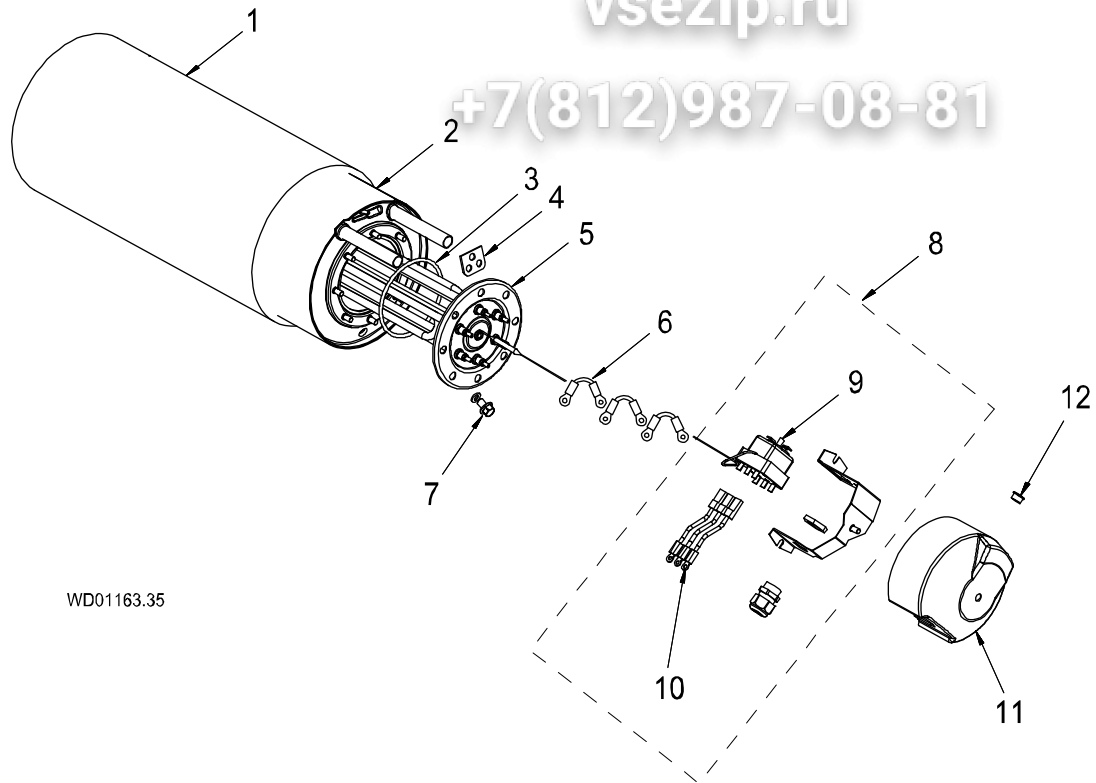


WD01163.35

| Booster heater (option) | | |
|--------------------------------|-------------------|---|
| Pos | WD no | Description |
| | WD01163.35 | Booster heater 200V, 9 kW |
| 1 | WD809.0903 | * Heat insulation booster heater |
| 2 | WD01162.04 | * Container booster heater (E) |
| 3 | WD719.1090 | * O-ring |
| 4 | WD44203.31 | * Attachment temp.sensor |
| 5 | WD30835.01 | * Element 9 kW, 230/400V |
| 6 | WD67182105 | * Cable bridge |
| 7 | WD700.2501 | * Collar screw + Gasket |
| 8 | WD302113.01 | * Overheating protection tankelement 400V |
| 9 | WD734.0110 | ** Overheating protection |
| 10 | WD670.8244 | ** Coupling conductor |
| 11 | WD301321.31 | Protection cover |
| 12 | WD51476571 | End plug |
| | WD01163.37 | Booster heater 200V 9kW |
| 1 | WD809.0903 | * Heat insulation booster heater |
| 2 | WD01162.04 | * Container booster heater (E) |
| 3 | WD719.1090 | * O-ring |
| 4 | WD44203.31 | * Attachment temp.sensor |
| 5 | WD30835.15 | * Element 9 kW, 200 V |
| 6 | WD67182105 | * Cable bridge |
| 7 | WD700.2501 | * Collar screw + Gasket |
| 8 | WD302113.02 | * Overheating protection tankelement 230V |
| 9 | WD734.0110 | ** Overheating protection |
| 10 | WD670.8244 | ** Coupling conductor |
| 11 | WD301321.31 | Protection cover |
| 12 | WD51476571 | End plug |

vsezip.ru

+7(812)987-08-81



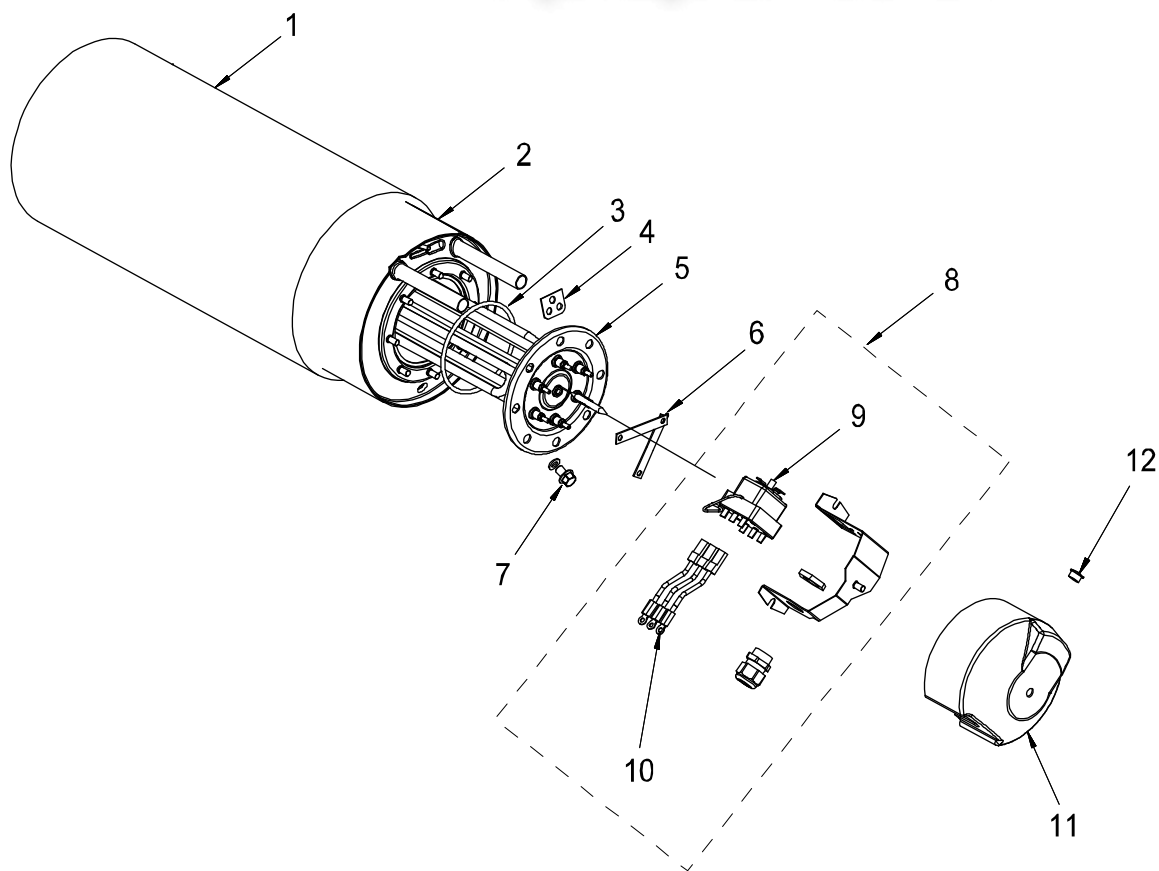
WD01163.35

| Booster heater (option) | | |
|--------------------------------|-------------------|---|
| Pos | WD no | Description |
| | WD01163.41 | Booster heater 200V 12kW |
| 1 | WD809.0903 | * Heat insulation booster heater |
| 2 | WD01162.04 | * Container booster heater (E) |
| 3 | WD719.1090 | * O-ring |
| 4 | WD44203.31 | * Attachment temp.sensor |
| 5 | WD30835.13 | * Element 12 kW, 200 V |
| 6 | WD67182105 | * Cable bridge |
| 7 | WD700.2501 | * Collar screw + Gasket |
| 8 | WD302113.02 | * Overheating protection tankelement 230V |
| 9 | WD734.0110 | ** Overheating protection |
| 10 | WD670.8244 | ** Coupling conductor |
| 11 | WD301321.31 | Protection cover |
| 12 | WD51476571 | End plug |
| | WD01163.47 | Booster heater 230V 12kW |
| 1 | WD809.0903 | * Heat insulation booster heater |
| 2 | WD01162.04 | * Container booster heater (E) |
| 3 | WD719.1090 | * O-ring |
| 4 | WD44203.31 | * Attachment temp.sensor |
| 5 | WD30835.02 | * Element 12kW, 230/400V |
| 6 | WD67182105 | * Cable bridge |
| 7 | WD700.2501 | * Collar screw + Gasket |
| 8 | WD302113.01 | * Overheating protection tankelement 400V |
| 9 | WD734.0110 | ** Overheating protection |
| 10 | WD670.8244 | ** Coupling conductor |
| 11 | WD301321.31 | Protection cover |
| 12 | WD51476571 | End plug |

1.8 Booster heater (option)

vsezip.ru

+7(812)987-08-81

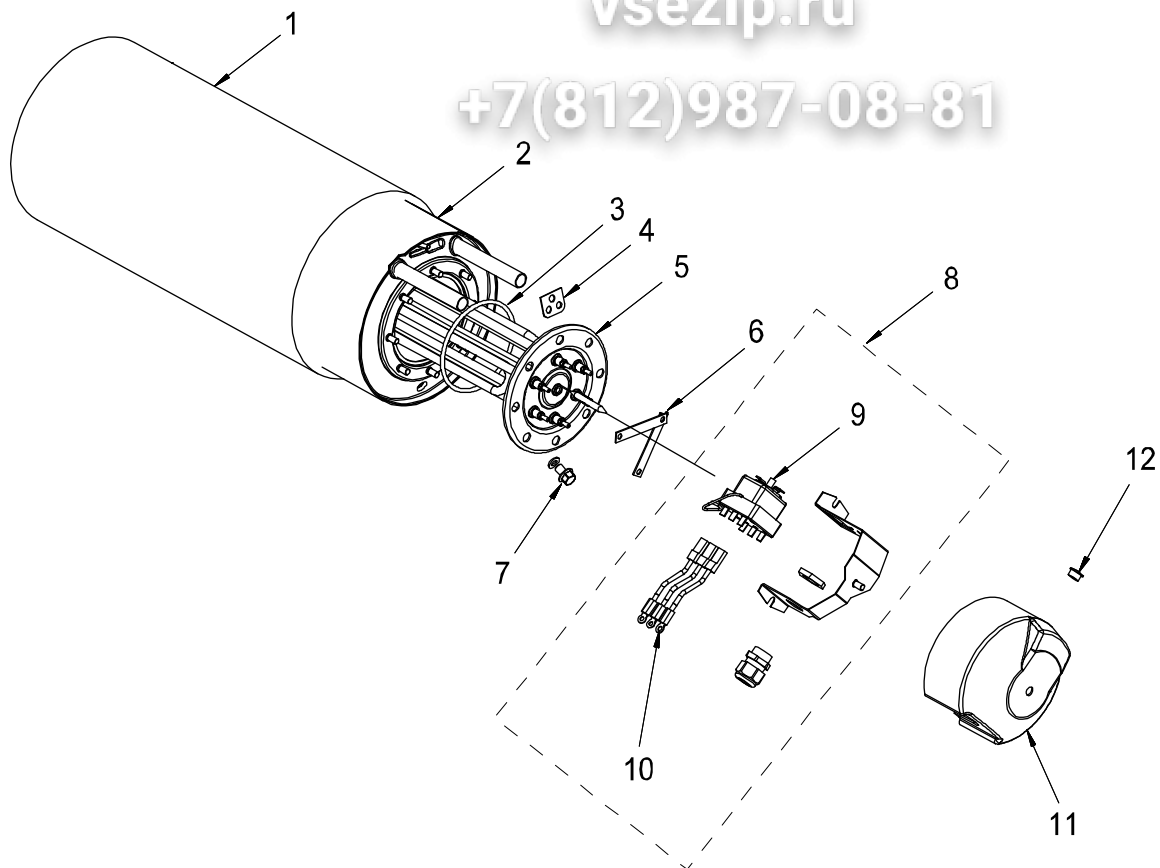


WD01163.39

| Booster heater (option) | | |
|--------------------------------|-------------------|---|
| Pos | WD no | Description |
| | WD01163.39 | Booster heater 40V 9kW |
| 1 | WD809.0903 | * Heat insulation booster heater |
| 2 | WD01162.04 | * Container booster heater (E) |
| 3 | WD719.1090 | * O-ring |
| 4 | WD44203.31 | * Attachment temp.sensor |
| 5 | WD30835.18 | * Element 9kW, 254/440V |
| 6 | WD04920.31 | * Copper clamp |
| 7 | WD700.2501 | * Collar screw + Gasket |
| 8 | WD302113.01 | * Overheating protection tankelement 400V |
| 9 | WD734.0110 | ** Overheating protection |
| 10 | WD670.8244 | ** Coupling conductor |
| 11 | WD301321.31 | Protection cover |
| 12 | WD51476571 | End plug |
| | WD01163.40 | Booster heater 400V 12kW |
| 1 | WD809.0903 | * Heat insulation booster heater |
| 2 | WD01162.04 | * Container booster heater (E) |
| 3 | WD719.1090 | * O-ring |
| 4 | WD44203.31 | * Attachment temp.sensor |
| 5 | WD30835.02 | * Element 12 kW, 230/400 V |
| 6 | WD04920.31 | * Copper clamp |
| 7 | WD700.2501 | * Collar screw + Gasket |
| 8 | WD302113.01 | * Overheating protection tankelement 400V |
| 9 | WD734.0110 | ** Overheating protection |
| 10 | WD670.8244 | ** Coupling conductor |
| 11 | WD301321.31 | Protection cover |
| 12 | WD51476571 | End plug |

vsezip.ru

+7(812)987-08-81



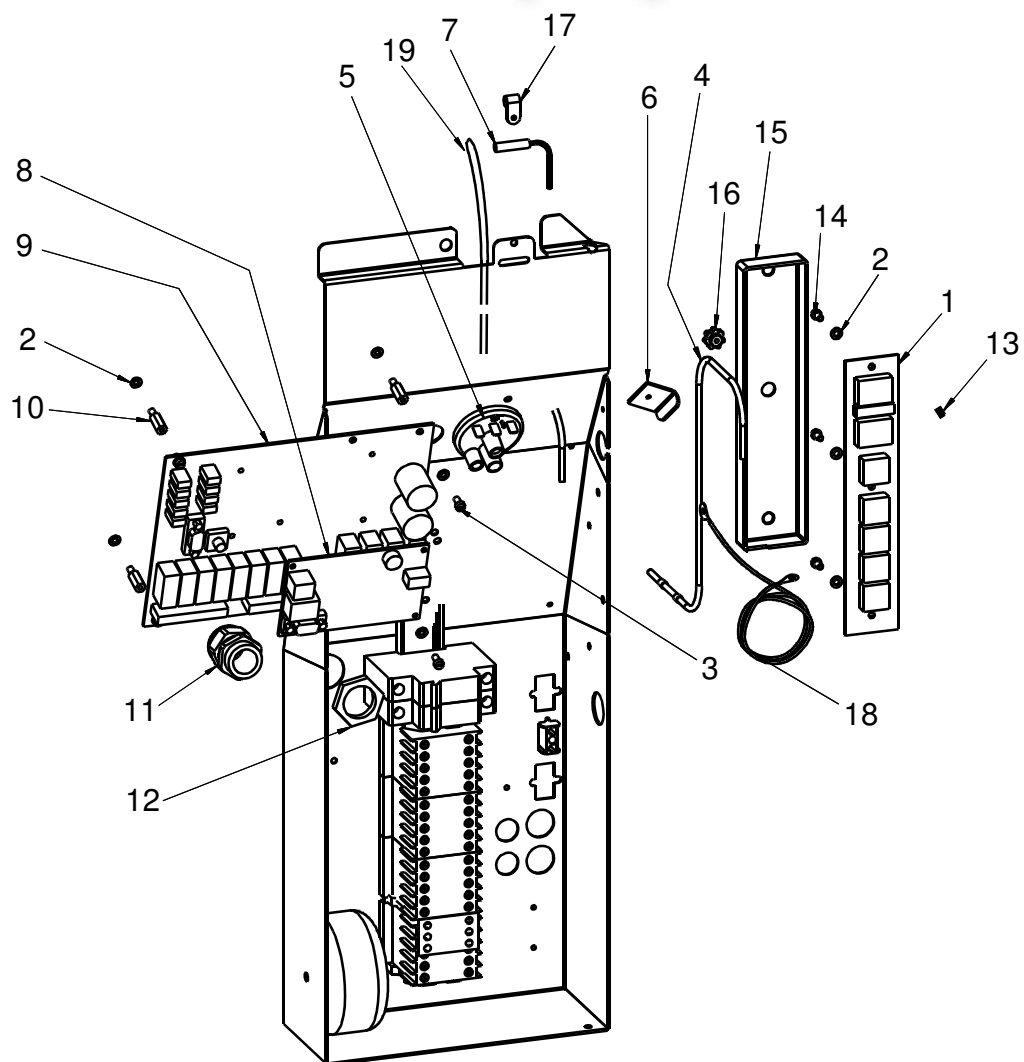
WD01163.39

| Booster heater (option) | | |
|--------------------------------|-------------------|---|
| Pos | WD no | Description |
| | WD01163.42 | Booster heater 40V 12kW |
| 1 | WD809.0903 | * Heat insulation booster heater |
| 2 | WD01162.04 | * Container booster heater (E) |
| 3 | WD719.1090 | * O-ring |
| 4 | WD44203.31 | * Attachment temp.sensor |
| 5 | WD30835.12 | * Element 12 kW, 440 V |
| 6 | WD04920.31 | * Copper clamp |
| 7 | WD700.2501 | * Collar screw + Gasket |
| 8 | WD302113.01 | * Overheating protection tankelement 400V |
| 9 | WD734.0110 | ** Overheating protection |
| 10 | WD670.8244 | ** Coupling conductor |
| 11 | WD301321.31 | Protection cover |
| 12 | WD51476571 | End plug |
| | WD01163.48 | Booster heater 400V 15kW |
| 1 | WD809.0903 | * Heat insulation booster heater |
| 2 | WD01162.04 | * Container booster heater (E) |
| 3 | WD719.1090 | * O-ring |
| 4 | WD44203.31 | * Attachment temp.sensor |
| 5 | WD30835.20 | * Element 15kW, 230/400V |
| 6 | WD04920.31 | * Copper clamp |
| 7 | WD700.2501 | * Collar screw + Gasket |
| 8 | WD302113.01 | * Overheating protection tankelement 400V |
| 9 | WD734.0110 | ** Overheating protection |
| 10 | WD670.8244 | ** Coupling conductor |
| 11 | WD301321.31 | Protection cover |
| 12 | WD51476571 | End plug |

1.9 Electric cubicle

vsezip.ru

+7(812)987-08-81



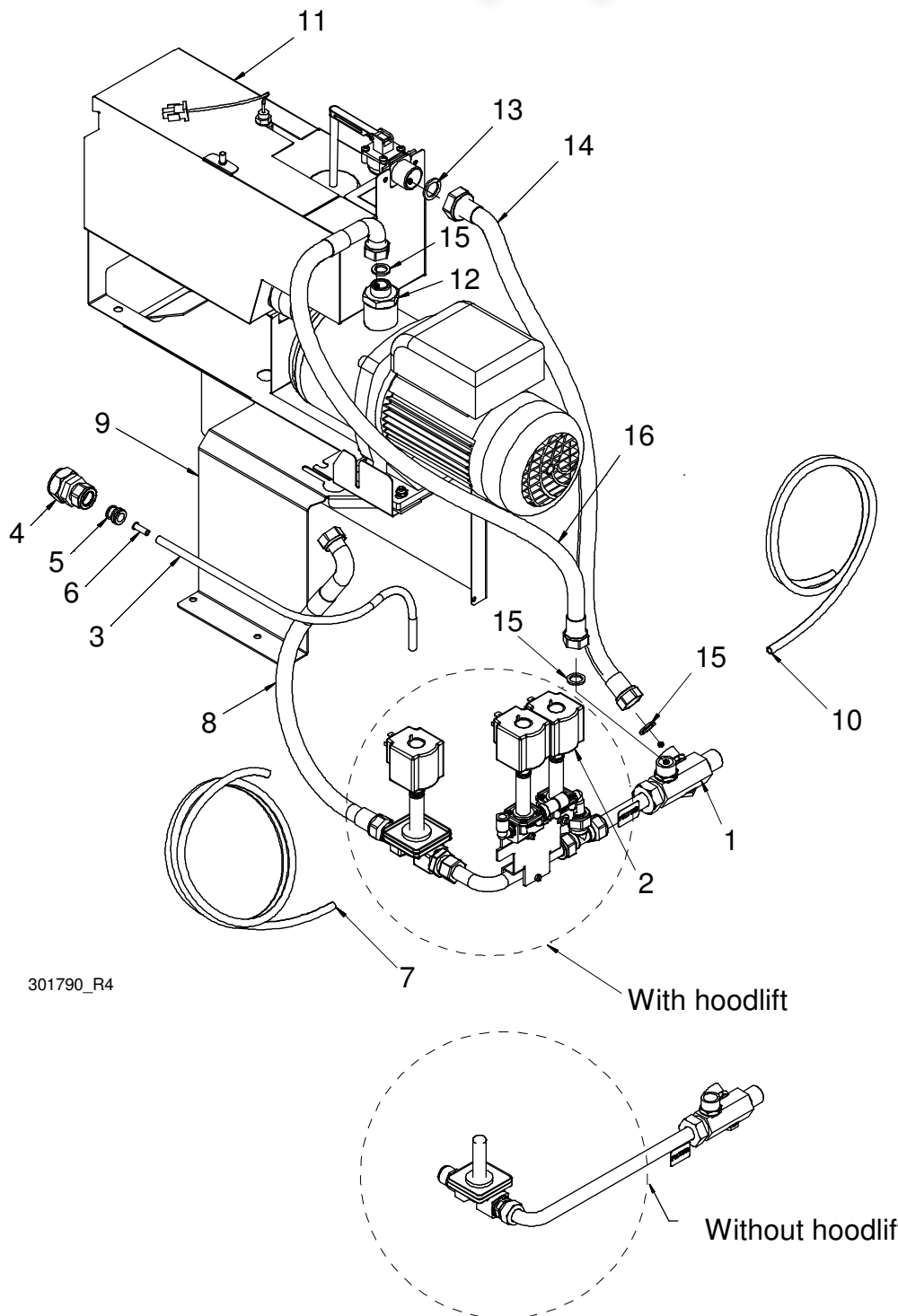
301769_R2

| Electric cubicle | | |
|------------------|-------------|------------------------------|
| Pos | WD no | Description |
| 1 | WD61102100 | Panelcard ESP |
| 2 | WD702.1205 | Lock washer IZ 4.3 steel izo |
| 3 | WD700.0608 | Screw MCS M4x8 A2 |
| 4 | WD61111300 | Temp.sensor |
| 5 | WD733.0103 | Pressure switch, gold |
| 6 | WD04196.31 | Pressure switch attachment |
| 7 | WD60231734 | Fieldbreaker switch |
| 7 | WD67182953 | Fieldbreaker switch (Option) |
| 8 | WD61103000 | CPU card ESP |
| 9 | WD61101100 | Computercard ESP |
| 10 | WD702.2015 | Distance nut |
| 11 | WD51476114 | Cable screw cap 25 polyamid |
| 12 | WD51476534 | Locking nut 25 polyamid |
| 13 | WD702.2207 | Distance tube |
| 14 | WD700.1603 | Locking nut M4 A2 |
| 15 | WD301794.31 | Defence to panelcard |
| 16 | WD718.0724 | Plastic nut M4 white RG114 |
| 17 | WD51402612 | Plastic holder |
| 18 | WD67182111 | Cable to front plate |
| 19 | WD719.0310 | Hose EPDM 7x4mm L=0,8m |

1.10 Booster pump (option)

vsezip.ru

+7(812)987-08-81

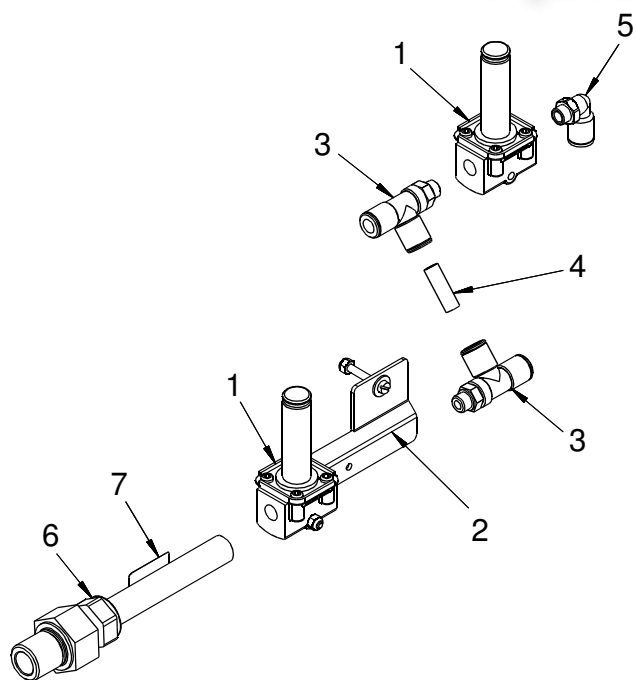


| Booster pump (option) | | |
|-----------------------|-------------|---------------------------------|
| Pos | WD no | Description |
| 1 | WD301783.01 | Coil 24V/50Hz 10W |
| 2 | WD729.1519 | Nylon tube L=0,5m |
| 3 | WD737.0408 | Coupling |
| 4 | WD705.0922 | * Clamping sleeve 22mm |
| | WD705.0323 | * Nut 22 mm |
| | WD705.0322 | * Clamping sleeve 15mm |
| | WD705.0420 | * Nut 15mm |
| | WD705.0315 | Clamping sleeve 15-10 |
| 5 | WD705.0421 | Supporting sleeve fpl 720 8x1.0 |
| 6 | WD705.0101 | Nylon tube L=1,6m |
| 7 | WD737.0408 | Slang RFR F1/2"xFC1/2" |
| 8 | WD719.5024 | Attachment booster pump |
| 9 | WD300187.31 | Nylon tube L=1,3m |
| 10 | WD737.0408 | Breaktank, kpl |
| 11 | | Hexagon nipple |
| 12 | WD706.0813 | * Packing 24x17x2 |
| 13 | WD701.0123 | Steel braided hose |
| 14 | WD47153.01 | Packing 1/2" |
| 15 | WD701.0122 | Steel braided hose |
| 16 | WD47139.01 | Coil 24V/50Hz 10W |

1.11 Valve packet 301773

vsezip.ru

+7(812)987-08-81



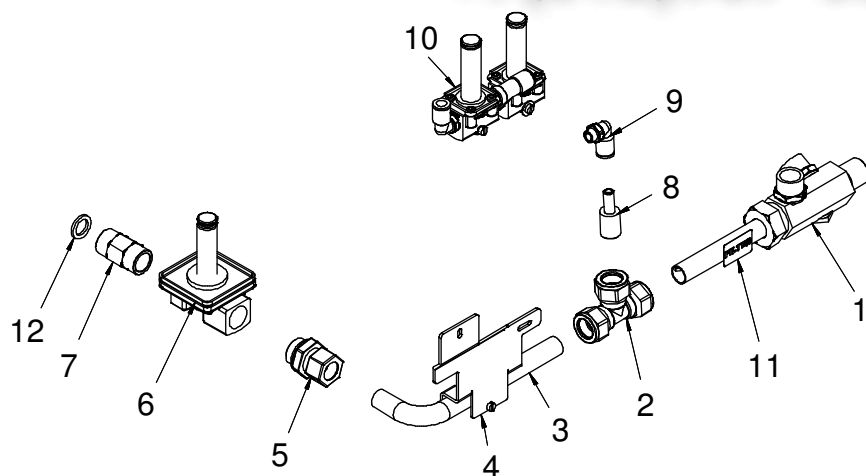
303071_R2

| Valve packet 301773 | | |
|---------------------|-------------|---------------------------------|
| Pos | WD no | Description |
| | WD301773.02 | Valve packet hood lift |
| 1 | WD729.2840 | * Solenoid valve housing |
| 2 | WD46736.31 | * Anchor plate |
| 3 | WD706.0927 | * T-connection 8-1/8" |
| 4 | WD737.0408 | * Hose D8 L=30 |
| 5 | WD706.0915 | * L-coupling |
| 6 | WD301774.02 | Incoming water connection |
| | WD701.0122 | * Packing 1/2" |
| | WD40301.01 | * Strainer w supporting housing |
| 7 | WD45234.31 | Marksign "FILTER" |

1.12 Valve packet 301783

vsezip.ru

+7(812)987-08-81

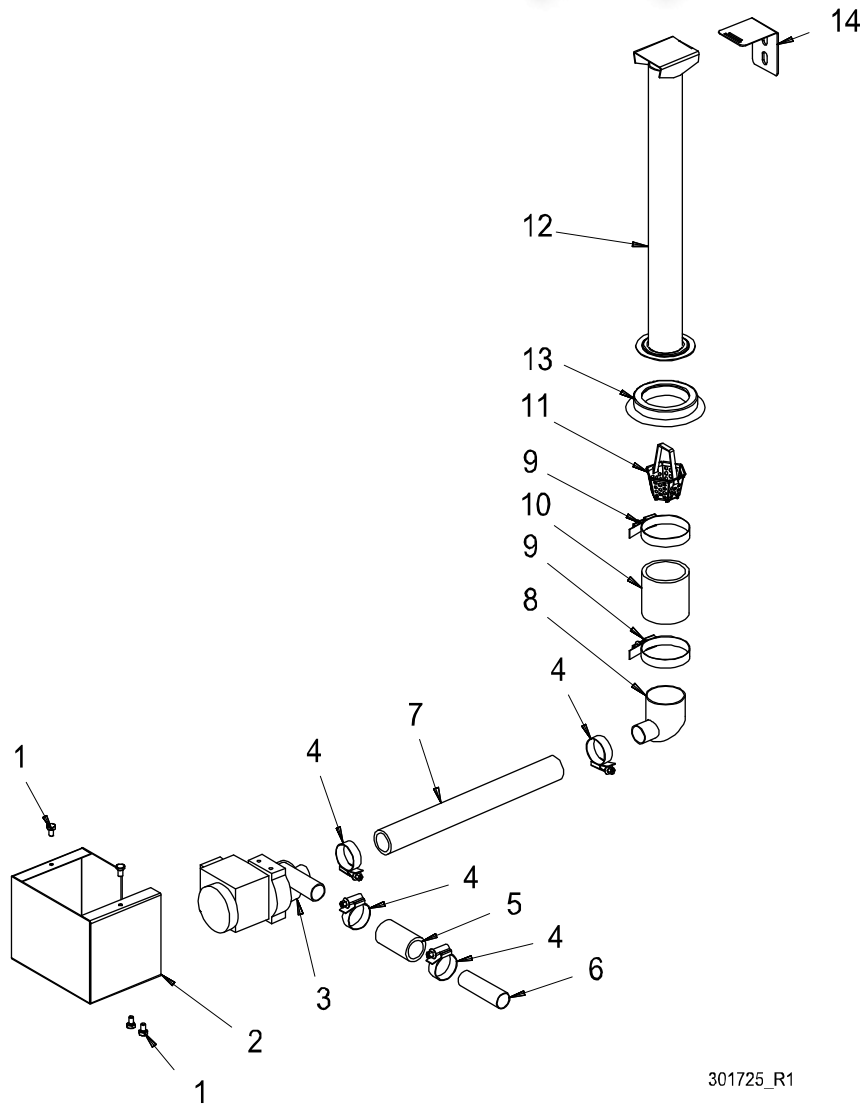


303056_R2

| Valve packet 301783 | | |
|---------------------|-------------|-----------------------------------|
| Pos | WD no | Description |
| | WD301783.01 | Valve packet hood lift |
| 1 | WD301779.01 | * Incoming water connection |
| | WD701.0123 | ** Packing 24x17x2 |
| | WD40301.01 | ** Strainer w supporting housing |
| 2 | WD705.2205 | * Coupling 15mm, brass |
| 3 | WD46778.31 | * Pipe |
| 4 | WD46779.31 | * Bracket |
| 5 | WD705.0915 | * Coupling 302-15xr15 |
| | WD705.0405 | ** Clamping sleeve |
| | WD705.0205 | ** Nut LK 63-15 |
| 6 | WD729.1540 | * Solenoid valve, housing EVSI-12 |
| 7 | WD709.0809 | * Ball valve |
| 8 | WD46928.31 | Connection valve packet |
| 9 | WD706.0915 | * L-coupling |
| 10 | WD301773.02 | * Valve packet 301773 |
| 11 | WD45234.31 | Marksign "FILTER" |
| 12 | WD701.0122 | Packing 1/2" |

1.13 Emptying pump (option) vsezip.ru

+7(812)987-08-81



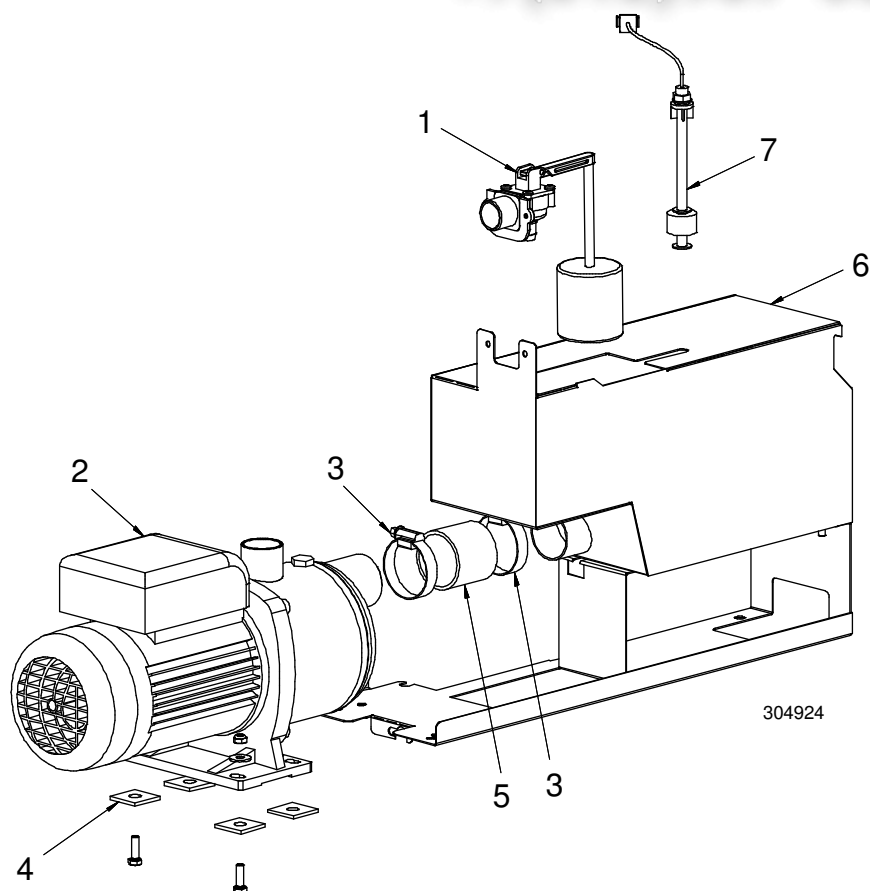
301725_R1

| Emptying pump (option) | | |
|------------------------|-------------|----------------------------|
| Pos | WD no | Description |
| 1 | WD700.0111 | Screw M6S M6x10 A2 |
| 2 | WD300636.31 | Cover emptying pump |
| 3 | WD735.0310 | Emptying pump |
| 4 | WD714.0107 | Hose clamp |
| 5 | WD717.0125 | Radiator hose 25 L=60mm |
| 6 | WD04703.31 | Pump connection empt.pump |
| 7 | WD717.0125 | Radiator hose 25 L=290mm |
| 8 | WD04224.01 | Drain connection empt.pump |
| 9 | WD714.0111 | Hose clamp 50-70 mm |
| 10 | WD717.0150 | Radiator hose ø50 L=60mm |
| 11 | WD44952.01 | Outlet strainer |
| 12 | WD301029.01 | Level pipe |
| 13 | WD719.4036 | Level pipe sealing |
| 14 | WD45983.31 | Attachment level pipe |

1.14 Breaktank (option)

vsezip.ru

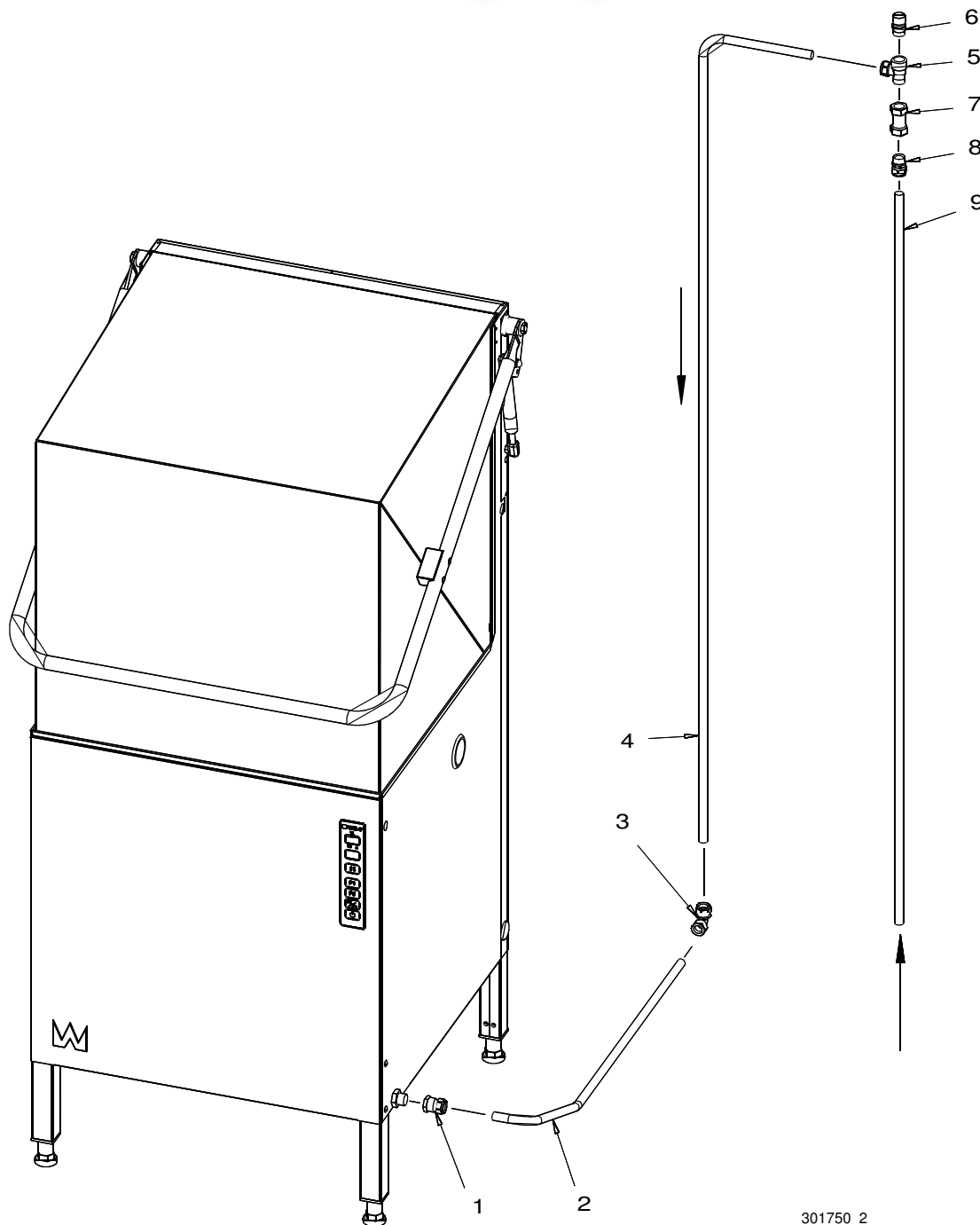
+7(812)987-08-81



| Breaktank (option) | | |
|--------------------|-------------|----------------------------------|
| Pos | WD no | Description |
| 1 | WD709.4020 | Float |
| 2 | | Pump 2HM4T/A |
| 3 | WD714.0109 | Hose clamp |
| 4 | WD719.1330 | Rubber foot 30x30x3 |
| 5 | WD46934.31 | Rubber connection breaktank pump |
| 6 | WD303194.01 | Tank cpl, Break tank |
| 7 | WD733.0514 | Level guard |

1.15 Backflow prevention device (option)

+7(812)987-08-81

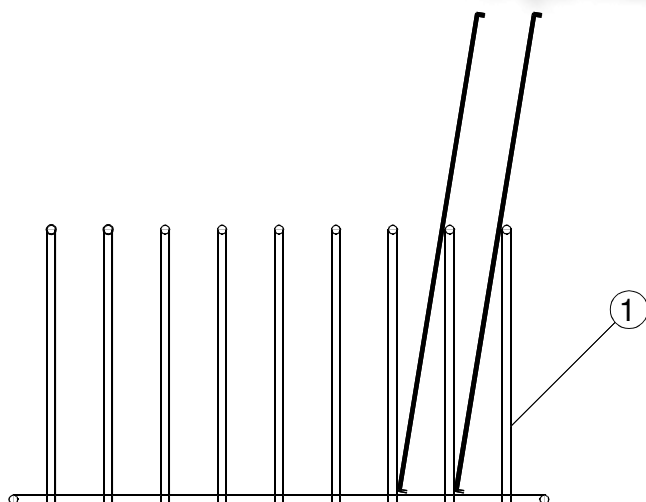


301750_2

| Backflow prevention device (option) | | |
|--|--------------|-----------------------------|
| Pos | WD no | Description |
| 1 | WD705.1008 | Coupling 15xR15 |
| | WD705.0420 | * Clamping sleeve 15mm |
| | WD705.0316 | * Nut 15mm |
| 2 | WD31711.75 | Pipe |
| 3 | WD705.1607 | Coupling, angeled 1/2" x 15 |
| | WD705.0420 | * Clamping sleeve 15mm |
| | WD705.0316 | * Nut 15mm |
| 4 | WD31712.75 | Pipe |
| 5 | WD705.2703 | T-coupling 15x15x R15 |
| | WD705.0420 | * Clamping sleeve 15mm |
| | WD705.0316 | * Nut 15mm |
| 6 | WD709.1506 | Vacuum valve |
| 7 | WD709.6305 | Non return valve |
| 8 | WD705.0912 | Coupling 15x15 |
| | WD705.0420 | * Clamping sleeve 15mm |
| | WD705.0316 | * Nut 15mm |
| 9 | WD40249.75 | Pipe |

1.16 Support for bakery plates (option)

+7(812)987-08-81

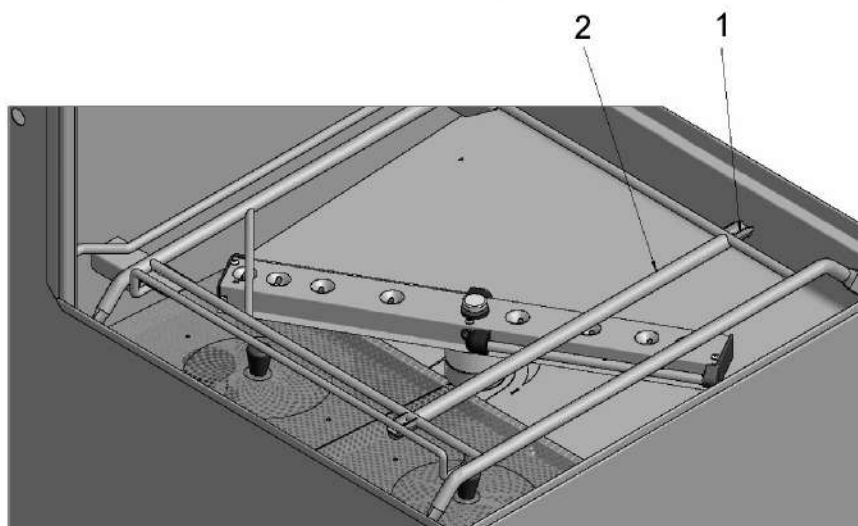


203,0733

| Support for bakery plates (option) | | |
|------------------------------------|------------|---------------------------|
| Pos | WD no | Description |
| | WD741.7011 | Support for bakery plates |

1.17 Rebuilding kit 460 basket (option)

+7(812)987-08-81

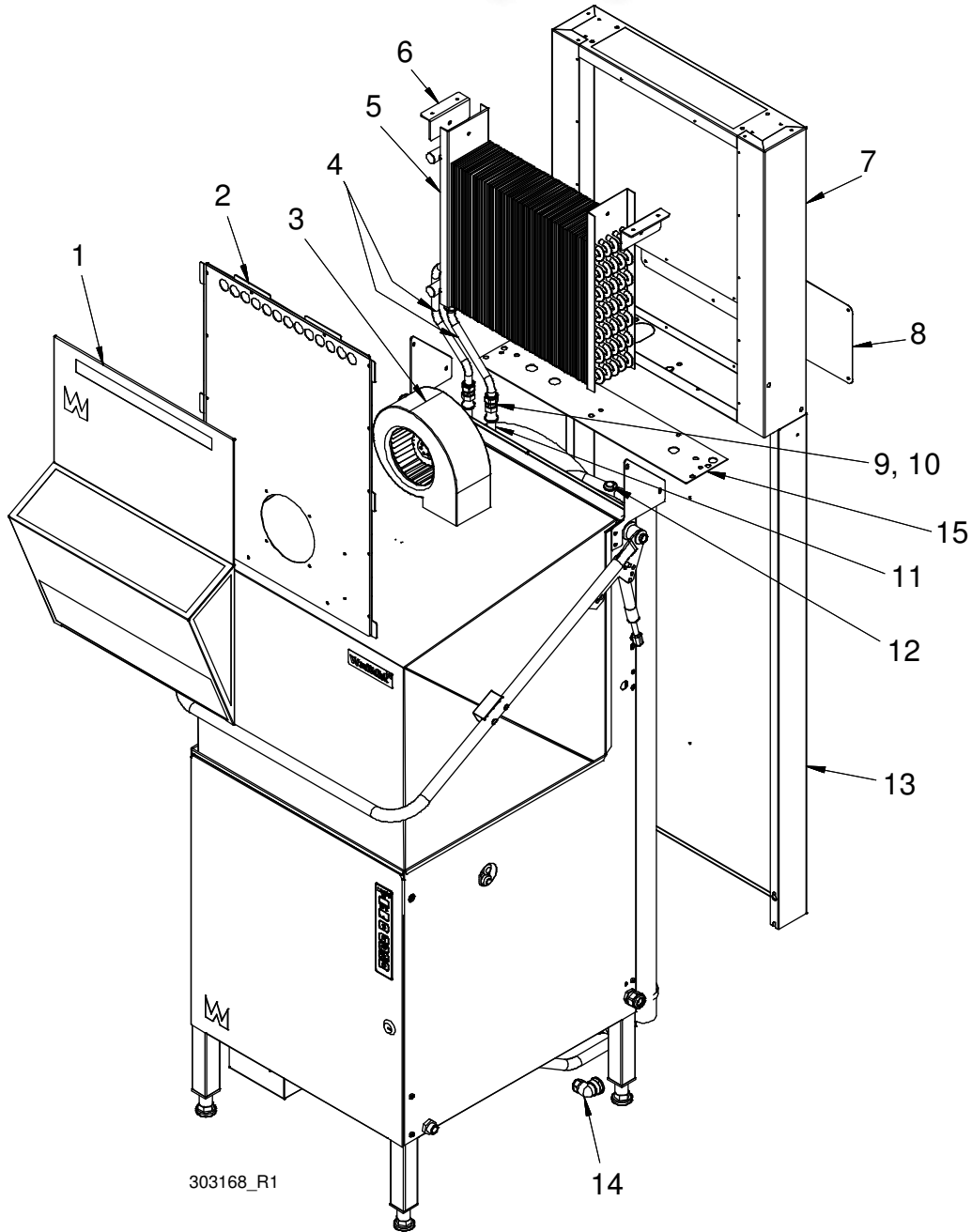


741,7011r1

| Rebuilding kit 460 basket (option) | | |
|------------------------------------|------------|--|
| Pos | WD no | Description |
| | WD741.7011 | Rebuilding kit 460 basket |
| 1 | WD46633.31 | * Attachment support 400 basket |
| 2 | WD46626.31 | * Support basket frame rail 400 basket |

1.18 Heat recovery by the exhausted steam (option)

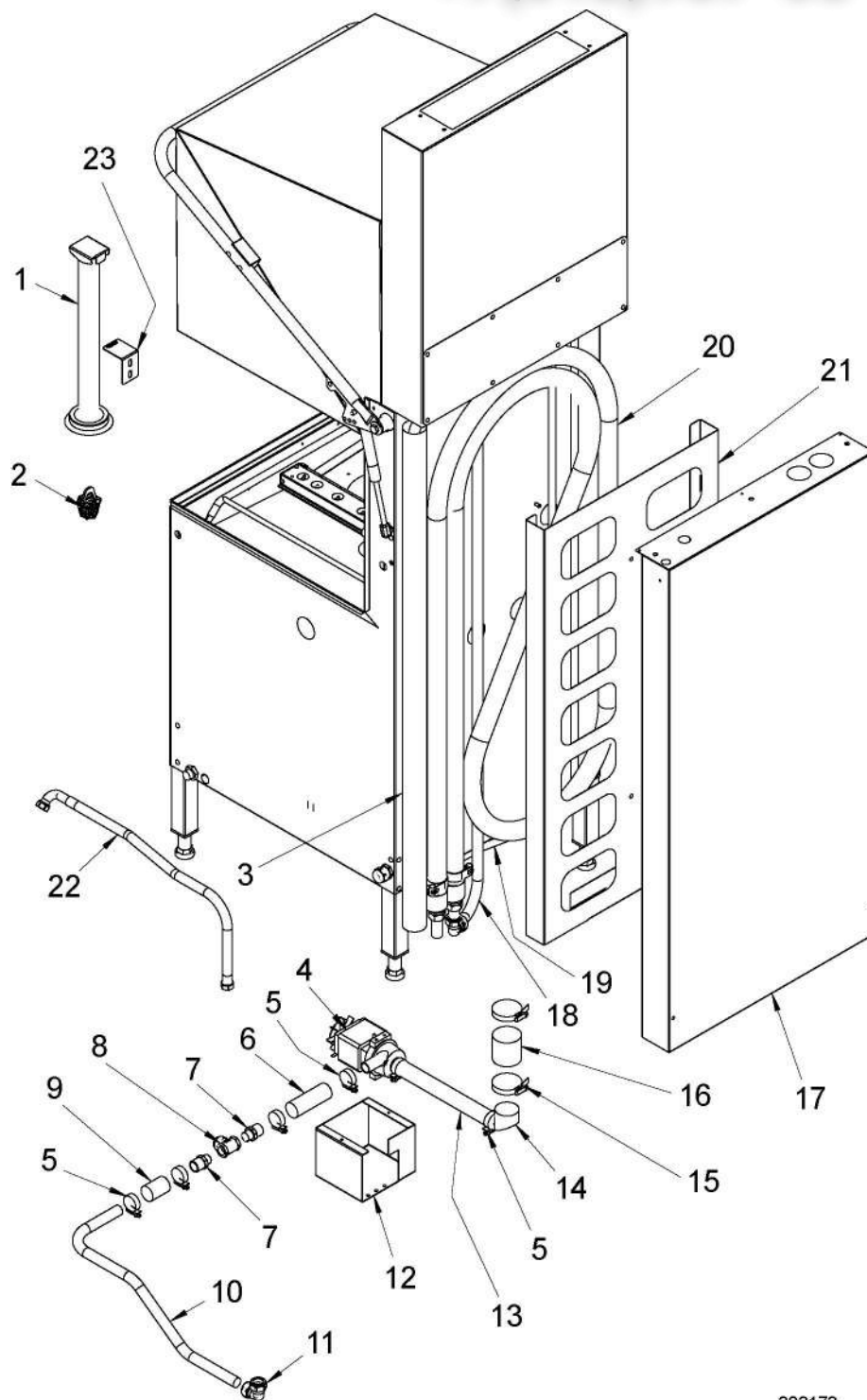
+7(812)987-08-81



| Heat recovery by the exhausted steam (201303) | | |
|---|-------------|---------------------------------|
| Pos | WD no | Description |
| 1 | WD303033.31 | Outer plate steam cap |
| 2 | WD303030.31 | Mounting plate fan |
| 3 | WD738.2023 | Fan RFE 140CKU 230/50Hz 129W |
| 4 | WD918.0115 | Pipe PEX 15x2.5 L=1m |
| 5 | WD810.0907 | Condensing battery |
| 6 | WD46748.31 | Anchor plate condensing battery |
| 7 | WD27825.01 | Box steam cap WD-6 |
| 8 | WD46802.31 | Cover plate |
| 9 | WD705.0914 | Coupling 15x15 |
| | WD705.0420 | * Clamping sleeve 15mm |
| | WD705.0315 | * Nut 15mm |
| 10 | WD705.0104 | Supporting sleeve 15x2.5 |
| 11 | WD719.5026 | Tube EPDM+RFR, G1/2" L=2000 |
| 12 | WD719.1219 | Conduit entry |
| 13 | WD27802.31 | Rear plate WD-6 |
| 14 | WD705.1905 | Coupling angeled 15 x 3/4" |
| | WD705.0420 | * Clamping sleeve 15mm |
| | WD705.0315 | * Nut 15mm |
| 15 | WD305297.31 | Gasket |

1.19 Heat recovery by the drain water (option)

+7(812)987-08-81



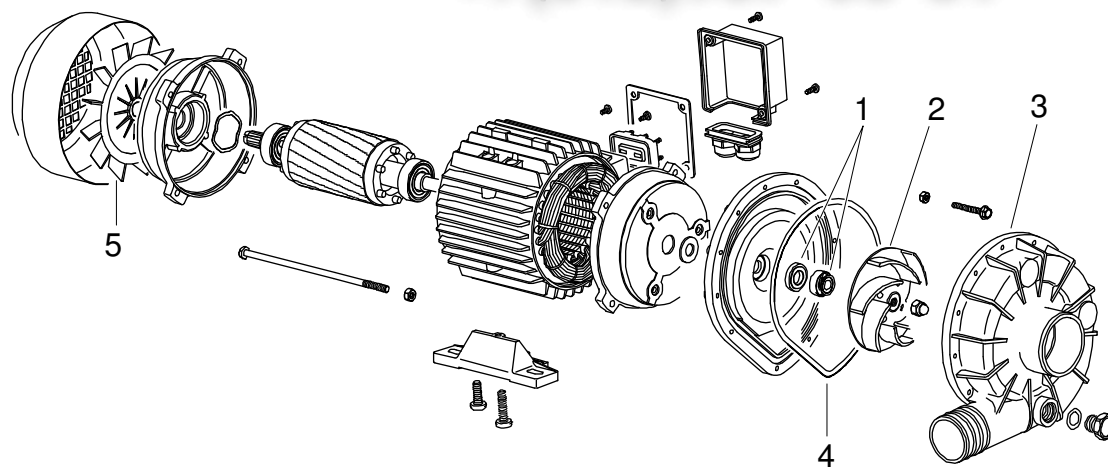
303173

| Heat recovery by the drain water (option) | | |
|---|-------------|-------------------------------------|
| Pos | WD no | Description |
| 1 | WD301029.01 | Level pipe |
| | WD719.4036 | * Level pipe sealing |
| 2 | WD44952.01 | Outlet strainer |
| 3 | WD726.0850 | Pipe 50x3000 without muff PP L=1260 |
| 4 | WD735.0202 | Drainpump Hanning BE 55C 9 |
| 5 | WD714.0107 | Hose clamp |
| 6 | WD717.0125 | Radiator hose 25 L=130 |
| 7 | WD706.1810 | Hose nipple1/2" |
| 8 | WD709.0561 | Flap non return valve TYP 130, 1/2" |
| 9 | WD717.0125 | Radiator hose 25 L=50 |
| 10 | WD46760.31 | Pipe drain pump |
| 11 | WD705.1207 | Coupling 22mm |
| | WD705.0323 | * Clamping sleeve 22mm |
| | WD705.0322 | * Nut 22 mm |
| 12 | WD300636.31 | Cover emptying pump |
| 13 | WD717.0125 | Radiator hose 25 L=270 |
| 14 | WD04224.01 | Drain connection empt.pump |
| 15 | WD714.0111 | Hose clamp 50-70 mm |
| 16 | WD717.0150 | Radiator hose ø50 L=60 |
| 17 | WD27802.31 | Rear plate WD-7 |
| 18 | WD303013.31 | Pipe drain heat recover |
| 19 | WD719.5026 | Tube EPDM+RFR, G1/2" L=2000 |
| 20 | WD303008.01 | Heat recovery, cpl |
| | WD714.0603 | * Hose clamp PA-RI 39-45 |
| | WD40058.31 | * Distribution nipple |
| | WD303064.01 | * Heat recovery |
| | WD705.0917 | * Coupling 22xR20 |
| | WD705.0323 | ** Clamping sleeve 22mm |
| | WD705.0322 | ** Nut 22 mm |
| 21 | WD303191.31 | Attachment |
| 22 | WD719.5025 | Tube RFR G1/2" L=800 |
| 23 | WD45983.31 | Attachment level pipe |

1.20 Pump 1225

vsezip.ru

+7(812)987-08-81



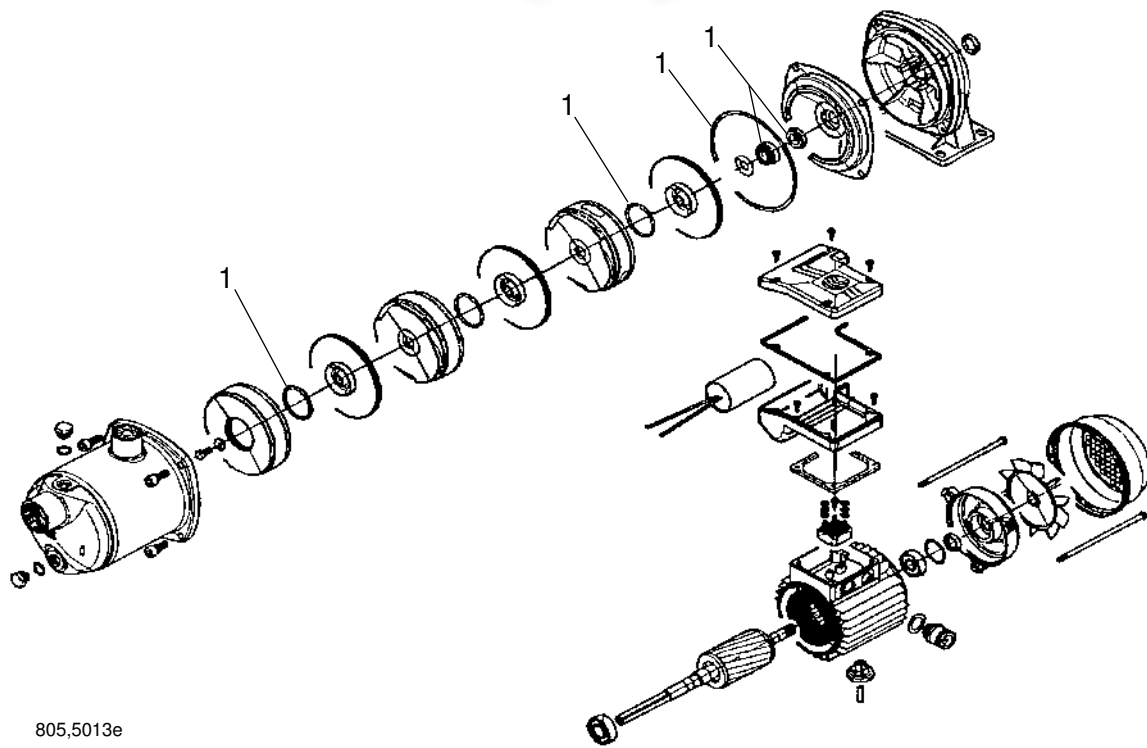
805.2610

| Pump 1225 | | |
|-----------|-------------|----------------------------|
| Pos | WD no | Description |
| | WD301169.01 | Pump 230/400V 50Hz |
| | WD805.2610A | Pump 255-480/440-480V 60Hz |
| | WD805.2610E | Pump 200V 50Hz |
| | WD805.2610F | Pump 200V 60Hz |
| 1 | WD805.2554 | * Sealing |
| 2 | WD805.2613 | * Impeller 50Hz |
| 2 | WD805.2613A | * Impeller 60Hz |
| 3 | WD805.2611 | * Pumphouse |
| 4 | WD805.2555 | * O-ring 50Hz |
| 5 | WD805.2572 | * Fan |

1.21 Pump 2HM4T/A

vsezip.ru

+7(812)987-08-81



805,5013e

| Pump 2HM4T/A | | |
|--------------|-------------|--------------------------------|
| Pos | WD no | Description |
| | WD805.5013 | Pump 2HM4T/A 230/415V/3/50Hz |
| | WD805.5013A | Pump 2HM4T/A 440V/3/60Hz |
| | WD805.5013B | Pump 2HM46T/A+MP 230/400V/60Hz |
| | WD805.5013D | Pump 2HM46T 230/415V/60Hz |
| | WD805.5013E | Pump 2HM4T/A 200V/3/50Hz |
| | WD805.5013F | Pump 2HM4T/A 200V/3/60Hz |
| 1 | WD805.5014 | Mechanical seal + OR |

vsezip.ru

+7(812)987-08-81