

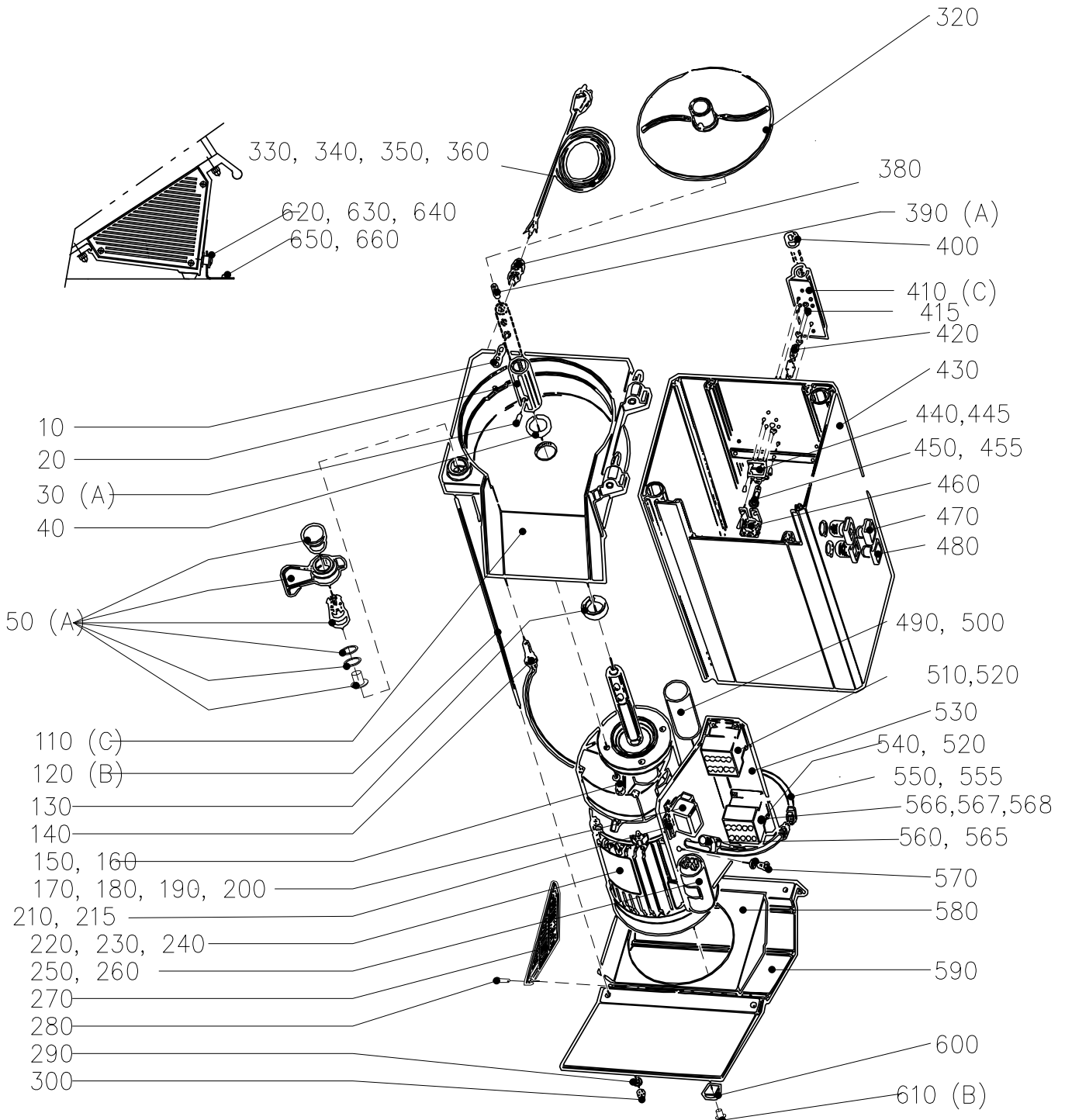
RG-350

| No. on drawing | Item No. | Description | Pcs |
|----------------|----------|-------------------------------|-----|
| 10 | 40548 | Carrier pin | 1 |
| 20 | 15783 | Thrust sleeve | 1 |
| 30 | 15784 | Carrier pin for ejector plate | 2 |
| 40 | 10311 | Seal ring V-35S | 1 |
| 50 | 40524 | Locking handle complete | 1 |
| 110 | 40540 | Knife chamber | 1 |
| 120 | 40629 | Pin screw set | 1 |
| 130 | 10444 | Seal ring basl 35X52X10 | 1 |
| 140 | 15354 | Magnetic switch HM-S-16 | 1 |
| 150 | 14086 | Lock washer FBB 6.1 A2 | 4 |
| 160 | 14525 | Screw M6S M6X20 | 4 |
| 170 | 15510 | Start relay kit 230v | 1 |

Зип Общепит

vsezip.ru

+7(812)987-08-81



A: LOCTITE NO.242

B: LOCTITE NO.243

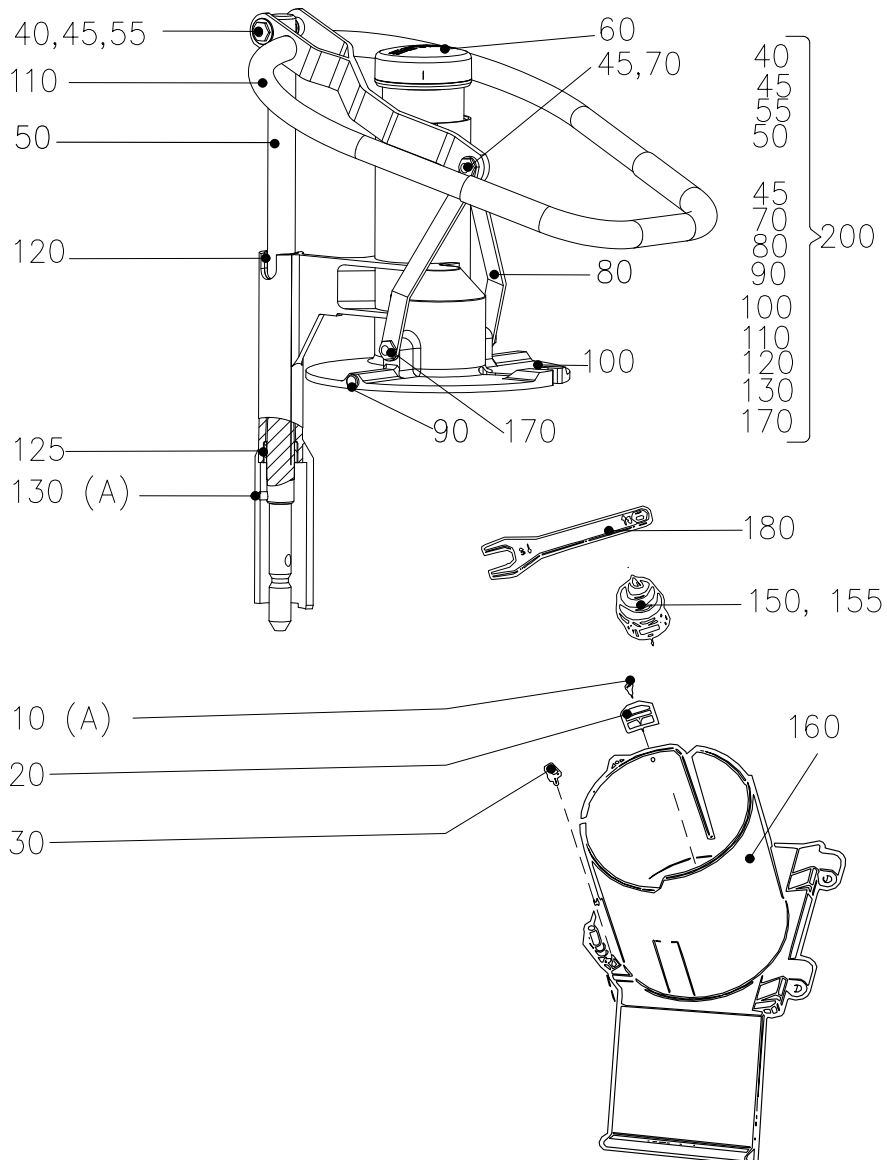
C: SILICONE RTV 108 ALL THE WAY AROUND HOUSING

RG-350

| No. on drawing | Item No. | Description | Pcs |
|----------------|----------|--------------------------------|-----|
| 180 | 40807 | Start relay kit 230v | 1 |
| 190 | 15503 | Start relay no260 klixon 110v | 1 |
| 200 | 40814 | Start relay kit 110v | 1 |
| 210 | 15384 | Fuse T100MA | 1 |
| 215 | 15385 | Fuse holder | 1 |
| 220 | 15780 | Motor CB1701-4SB5 110 120 1 60 | 1 |
| 230 | 15781 | Motor 220-240 1 50/60 | 1 |
| 240 | 15782 | Motor CB1701-4SB5 400 3 50 | 1 |
| 250 | 15502 | Capacitor,start 193MICROF 110v | 1 |
| 260 | 15154 | Kondensator | 1 |
| 270 | 1096 | Louver kit | 1 |
| 280 | 14248 | Screw KFX-H ST3,5X9,5 A2 70 | 6 |
| 290 | 14085 | Lock washer FBB 5,1 A2 | 6 |
| 300 | 1267 | Nut,domed head M5 | 4 |
| 320 | 3086 | Ejector plate | 1 |
| 330 | 15147 | Supply cord CB 1 phase | 1 |
| 340 | 15377 | Supply cord BS/2.5MS UK | 1 |
| 350 | 15208 | Supply cord SJT3X14 AWG, US | 1 |
| 360 | 15142 | Supply cord CB 3 phse | 1 |
| 380 | 15483 | Cable retain. met.PR15.2 dia10 | 2 |
| 390 | 14844 | Locking screw PSS M8X 12 A2 70 | 1 |
| 400 | 40680 | Bushing | 2 |
| 410 | 40637 | Bracket incl screws | 1 |
| 415 | 10500 | Sealring 06X2.2 N70BN02F | 2 |
| 420 | 40638 | Activator pin short compl. | 1 |
| 430 | 40567 | Housing assembly compl. | 1 |
| 440 | 40640 | Microswitch unit single compl. | 1 |
| 445 | 15481 | Micro switch BVMF ULS | 1 |
| 450 | 40639 | Activator pin long compl. | 1 |
| 455 | 10499 | Spring SF-TFR 0,75-6-15 | 2 |
| 460 | 40641 | Microswitch unit double compl. | 1 |
| 470 | 15657 | Push button o compl. | 1 |
| 480 | 15440 | Push button 1 complete | 1 |
| 490 | 15501 | Capasitor,run 80MICROF. 110v | 1 |
| 500 | 15489 | Capasitor 16 MF, 220-240V | 1 |
| 510 | 15810 | Contactactor 11BG0610A230 | 2 |
| 520 | 15815 | Contactactor BF1210A110 | 1 |
| 530 | 40632 | Panel incl. fasteners | 1 |
| 540 | 15813 | Contactactor 11BG0910A110 | 1 |
| 550 | 40787 | Wring loom, LS-relay | 1 |
| 555 | 40800 | Wiring loom 3-phase | 1 |
| 560 | 15111 | RC-circuit 110v | 1 |
| 565 | 15110 | RC-circuit 230v | 1 |
| 566 | 15819 | Overload relay RF381800V195 | 1 |
| 567 | 15816 | Overload RF120630 | 1 |
| 568 | 15812 | Overload relay RF381400V195 | 1 |
| 570 | 14339 | Screw MRX-H M5X12 A2 70 | 6 |
| 580 | 40547 | Fan plate | 1 |
| 590 | 40622 | Base | 1 |
| 600 | 10507 | Foot, rubber BVO 22H10 | 4 |
| 610 | 40786 | Screw for rubberfoot | 4 |
| 620 | 10497 | Bushing plastic 05-6-10-7.5 | 1 |
| 630 | 10498 | Easher plastic 32-6 | 2 |
| 640 | 14465 | Screw LSKS M6X20 A2 70 | 1 |
| 650 | 40780 | Bracket | 1 |
| 660 | 14990 | Screw CSS 4.8X25 A2 | 2 |
| | 40689 | Rear bracket for shaft compl. | 1 |

RG-350 MANUAL FEEDER, ERGO LOOP

| No. on drawing | Item No. | Description | Pcs |
|----------------|----------|----------------------------|-----|
| 10 | 14223 | Screw MKFS M4X 10 A2 70 | 2 |
| 20 | 40628 | Support plate | 1 |
| 30 | 40627 | Sliding washer | 1 |
| 40 | 25162 | Shaft L=45 | 1 |
| 45 | 25190 | Screw | 2 |
| 50 | 40844 | Pusher shaft | 1 |
| 55 | 40848 | Bushing | 2 |
| 60 | 40554 | Pestle | 1 |
| 70 | 40849 | Nut L=12,5 | 1 |
| 80 | 40894 | Pusher link | 2 |
| 90 | 40575 | Slide knob | 3 |
| 100 | 40876 | Pusher plate Ergo compl. | 1 |
| 110 | 40845 | Pusher handle ergo | 1 |
| 120 | 40846 | Bushing 20.4/25X30 | 1 |
| 125 | 40762 | Bushing 25X13 | 1 |
| 130 | 1054 | Pin | 1 |
| 150 | 3129 | Decoring device 3ph | 1 |
| 155 | 40636 | Decoring device 1ph compl. | 1 |
| 160 | 40887 | Feed cylinder compl. | 1 |
| 170 | 25191 | Screw for link system | 2 |
| 180 | 3162 | Wrench | 1 |
| 200 | 40869 | Push feeder handle | 1 |



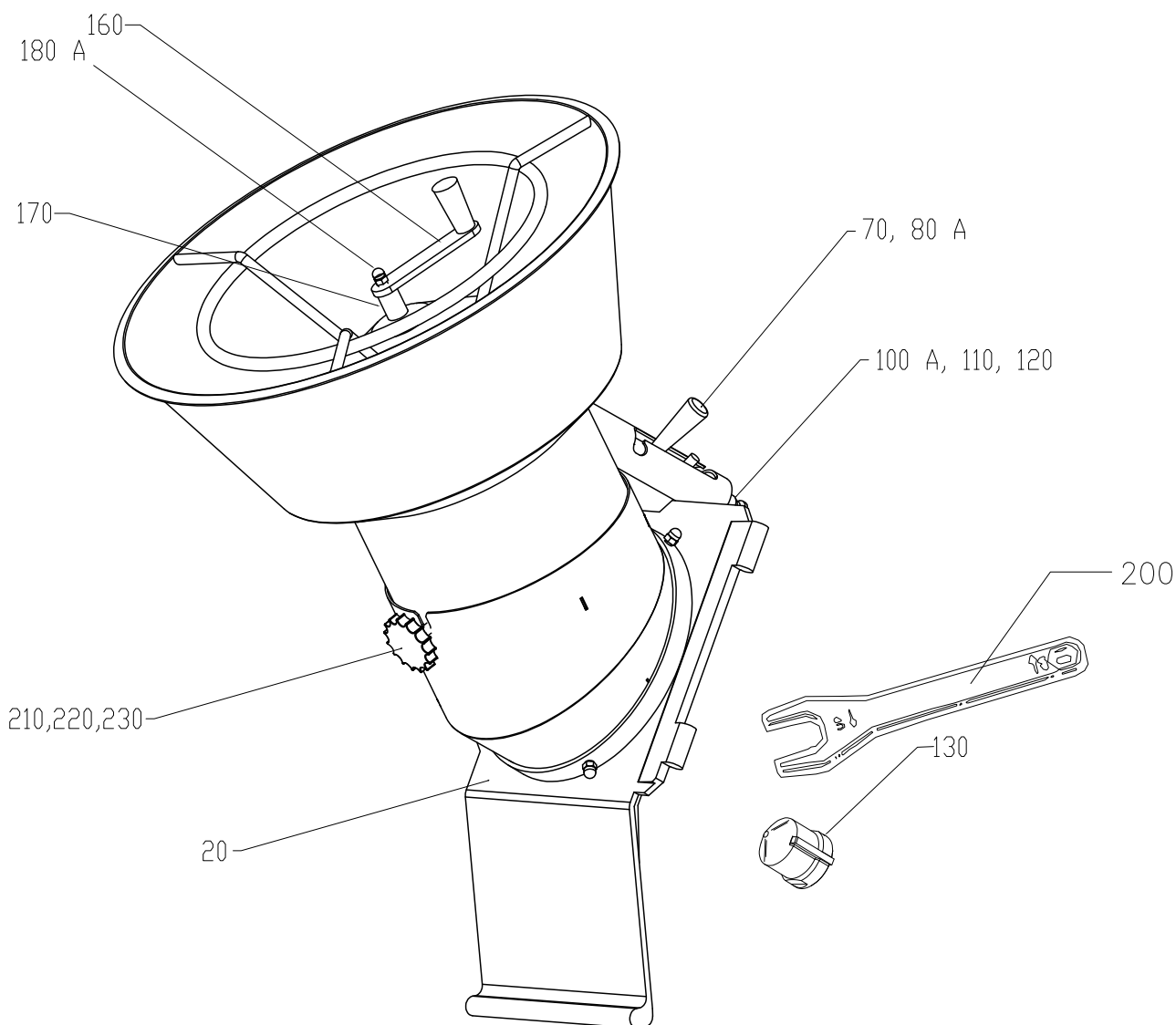
RG-350 FEED HOPPER

| No. on drawing | Item No. | Description | Pcs |
|----------------|----------|----------------------|-----|
| 20 | 40627 | Sliding washer | 1 |
| 70 | 10343 | Handle I280/65-M8 | 1 |
| 80 | 3149 | Stud screw | 1 |
| 100 | 1054 | Pin | 1 |
| 110 | 40892 | Sliding sleeve | 1 |
| 120 | 40890 | Locking shaft | 1 |
| 130 | 40891 | Stiring sleeve | 1 |
| 160 | 3311 | Agitator arm | 1 |
| 170 | 40893 | Stirer | 1 |
| 180 | 14028 | Nut MHM M8 | 1 |
| 200 | 3162 | Wrench | 1 |
| 210 | 10036 | Lobe knob 25-M5 | 1 |
| 220 | 10281 | Locking washer 12X21 | 1 |
| 230 | 10306 | Plug | 1 |

Зип Общепит

vsezip.ru

+7(812)987-08-81

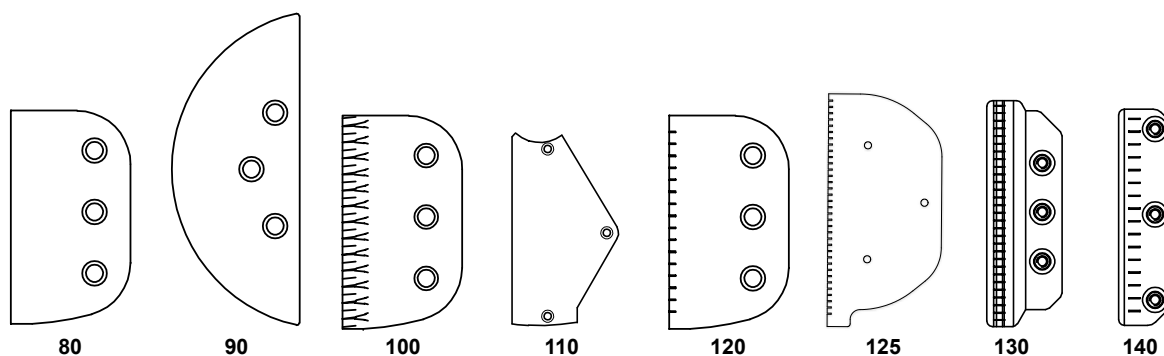


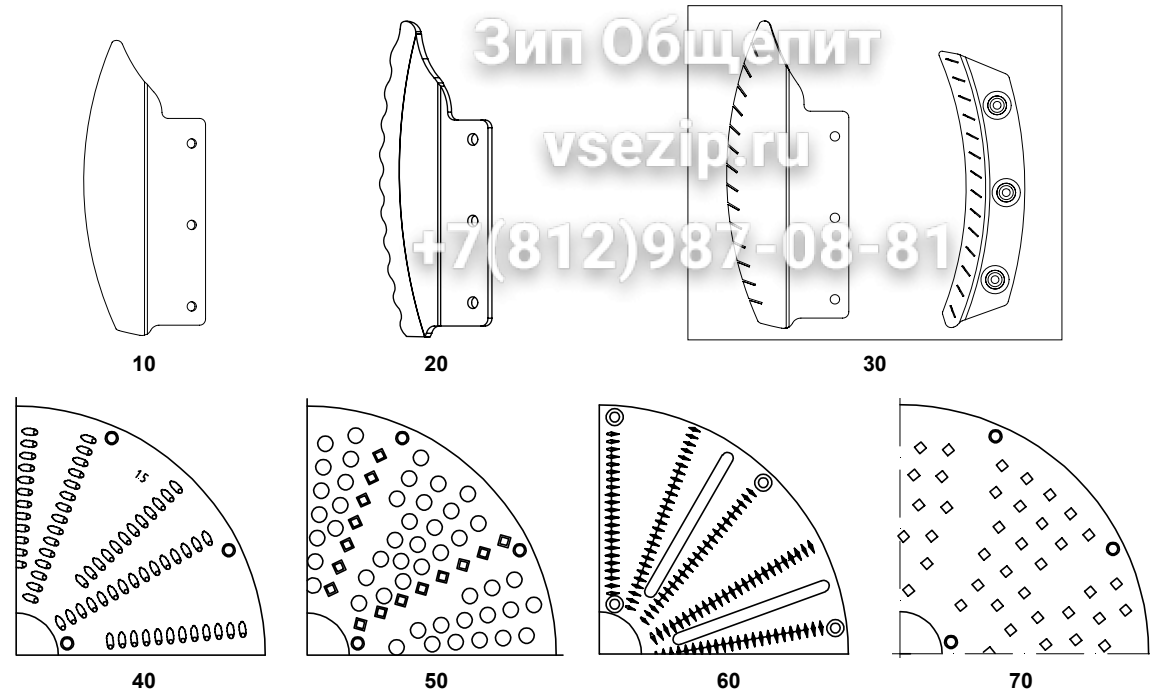
SPARE PARTS CUTTING TOOLS FOR RG-350/RG-400 AND RG-400i

| Cutting Tool | No. on drawing | Item No. | Description |
|------------------------|----------------|----------|---------------------------------|
| Slicer | 10 | 63302 | Knife, Slicer |
| Crimping Slicer | 20 | 63300 | Knife, Crimping Slicer |
| Julienne Cutter | 30 | 63336 | Kit spare part Julienne 2x2 mm |
| | | 63356 | Kit spare part Julienne 2x6mm |
| | | 63358 | Kit spare part Julienne 3x3 mm |
| | | 63337 | Kit spare part Julienne 4x4 mm |
| | | 63338 | Kit spare part Julienne 6x6mm |
| | | 63339 | Kit spare part Julienne 8x8mm |
| | | 63335 | Kit spare part Julienne 10x10mm |
| Grater/Shredder | 40 | 87128 | Plate for 1.5 mm, Grater |
| | | 87129 | Plate for 2 mm, Grater |
| | | 87130 | Plate for 3 mm, Grater |
| | | 87131 | Plate for 4.5 mm, Grater |
| | | 87132 | Plate for 6 mm, Grater |
| | | 87133 | Plate for 8 mm, Grater |
| | | 87134 | Plate for 10 mm, Grater |
| Fine Grater | 50 | 87135 | Plate, Fine Grater |
| | 60 | 87136 | Plate, Grater Extra Fine |
| | 70 | 87137 | Plate, Hard Cheese Grater |

SPARE PARTS CUTTING TOOLS FOR RG-350/RG-400 AND RG-400i

| Cutting Tool | No. on drawing | Item No. | Description | |
|---|----------------|----------------------------|------------------------------|--------------------------|
| Standard Slicer / HC Slicer | 80 | 87138 | Knife, Standard Slicer | |
| Fine Cut Slicer | 90 | 87139 | Knife, Fine Cut Slicer | |
| Crimping Slicer | 100 | 87140 | Knife, Crimping Slicer | |
| Soft Slicer | 110 | 87141 | Knife, Soft Slicer | |
| Julienne Cutter | 130 | 87142 | Knife balk, 2.5x2.5 mm | |
| | | 87143 | Knife balk, 2.5x6 mm | |
| Julienne Cutter / HC Julienne Cutter | 80 | 87138 | Knife, Standard Slicer | |
| | | 120 | 87145 | Horizontal knife, 4x4 mm |
| | | 87146 | Horizontal knife, 6x6 mm | |
| | 87147 | Horizontal knife, 10x10 mm | | |
| | 125 | 87156 | Horizontal knife, 2x2 mm | |
| | | 87159 | Horizontal knife, 2x6 mm | |
| | 130 | 87148 | Knife balk, 2x2 mm | |
| | | 87158 | Knife balk, 2x6 mm | |
| | 140 | 87149 | Knife balk, 4x4 mm | |
| | | 87150 | Knife balk, 6x6 mm | |
| | | 87151 | Knife balk, 10x10 mm | |
| HC Julienne Cutter | 120 | 87152 | Horizontal knife, 2x2 mm | |
| | | 87155 | Horizontal knife, 2.5x2.5 mm | |
| | | 87157 | Horizontal knife, 2x6 mm | |
| | | 87153 | Horizontal knife, 8x8 mm | |
| | 140 | 87154 | Knife balk, 8x8 mm | |





SPARE PARTS POTATO CHIP GRID AND DICING GRIDS FOR RG-350/RG-400 AND RG-400i

| Cutting Tool | No. on drawing | Item No. | Description |
|---|----------------|-------------------------------|-----------------------------------|
| Potato Chip Grid | 150 | 35734 | Compl. knife kit Potato Chip Grid |
| Center ring for RG-350/400 | 160 | 62553 | Center ring di. 39 DW RG6-400 |
| Center ring for RG-400i | 160 | 62743 | Center ring |
| Ceramic kit for RG-400i | 170 | 37252 | Ceramic kit |
| Complete knife kit for Dicing Grids | 180 | 62431 | Compl. kit knives, DG 6 mm |
| | | 62432 | Compl. kit knives, DG 8 mm |
| | | 62433 | Compl. kit knives, DG 10 mm |
| | | 62434 | Compl. kit knives, DG 12 mm |
| | | 62435 | Compl. kit knives, DG 15 mm |
| | | 62436 | Compl. kit knives, DG 20 mm |
| | | 62437 | Compl. kit knives, DG 25 mm |
| 1 meter knife blade for Dicing Grids | 190 | 82331 | Knife blade, upper 6 mm, 1 M |
| | | 82332 | Knife blade, lower 6 mm, 1 M |
| | | 82333 | Knife blade, upper 8 mm, 1 M |
| | | 82334 | Knife blade, lower 8 mm, 1 M |
| | | 82335 | Knife blade, upper 10 mm, 1 M |
| | | 82336 | Knife blade, lower 10 mm, 1 M |
| | | 82337 | Knife blade, upper 12 mm, 1 M |
| | | 82338 | Knife blade, lower 12 mm, 1 M |
| | | 82339 | Knife blade, upper 15 mm, 1 M |
| | | 82340 | Knife blade, lower 15 mm, 1 M |
| | | 82341 | Knife blade, upper 20 mm, 1 M |
| | | 82342 | Knife blade, lower 20 mm, 1 M |
| | 82343 | Knife blade, upper 25 mm, 1 M | |
| | 82344 | Knife blade, lower 25 mm, 1 M | |
| Tool for inner lock ring | 200 | 62449 | Tool for inner lock ring |

