

Зип Общепит



Spare parts for:

vsezip.ru

Ice makers +7(812)987-08-81



Suitable for:

ICEMATIC



This catalogue is automatically generated.
Therefore, the sequence of the items might
not be always shown at best.

Updates will be issued in case of additions
and/or amendments.

Suitable universal spare parts may not be included

Rel. 2013-08061702





Suitable for:

ИСМАТИК

Suitable for:



Baffles

usezip.ru

3095010 DOOR BAFFLE BUSHING

+7(812)987-08-81



ИСМАТИК

3095001 DOOR BAFFLE PLATE 345x205 mm
for Icemaker (ИСМАТИК) N1 - N20



3095010 DOOR BAFFLE BUSHING



ИСМАТИК 25250099

3095003 DOOR BAFFLE PLATE 370x205 mm
for N30
for Icemaker (ИСМАТИК) N30



ИСМАТИК

3095010 DOOR BAFFLE BUSHING



ИСМАТИК 25260452

3095002 DOOR BAFFLE PLATE 423x205 mm
for Icemaker (ИСМАТИК) G25 - N2



ИСМАТИК

3095010 DOOR BAFFLE BUSHING



ИСМАТИК 25250106

3095008 DOOR BAFFLE PLATE 565x490 mm
for Icemaker (SCOTSMAN) MV25 - MV32



ИСМАТИК

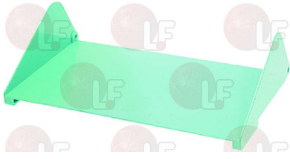
ИСМАТИК 81453072

ИСМАТИК 81453131



Suitable for:

3095007 DOOR BAFFLE 366x210 mm
for Icemaker (ICEMATIC) N30 - N50



ICEMATIC 25260472

ICEMATIC 25260473

ICEMATIC Вит Общепит



Suitable for:

3095010 DOOR BAFFLE BUSHING

vsezip.ru

+7(812)987-08-81



ICEMATIC

3095005 DOOR BAFFLE 495x420 mm
for Icemaker (SCOTSMAN) MV18 - MV21



ICEMATIC 81453008

ICEMATIC 81453130

Bearings

3063081 BEARING LOWER WITH SUPPORT
for Icemaker (SCOTSMAN) MFE61 - MF41 - MF51 - MF61

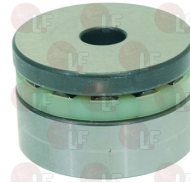


ICEMATIC CF06052700
ICEMATIC CF75400801

ICEMATIC CF060688000
ICEMATIC 29015012

ICEMATIC CF65015900
ICEMATIC 29070002

3063082 BEARING UPPER T12/8
for Icemaker (SCOTSMAN) MFE61 - MF41 - MF51 - MF61



ICEMATIC CF65105800

ICEMATIC 29015011

3063119 ICE CRUSHER COMPLETE WITH BEARING
for reduction gear and ice crusher
external \varnothing 51 mm
internal \varnothing 26 mm
for Icemaker (SCOTSMAN) - Series AF - MF20 - MF22
MF30



ICEMATIC CF06072000
ICEMATIC 29015001

ICEMATIC CF67004100
ICEMATIC 29060000

ICEMATIC CF75400102

3063019 LOWER BEARING SR14RS
external \varnothing 47.5 mm - internal \varnothing 22 mm
thickness 13 mm
for Icemaker (SCOTSMAN) - Series AF - MF20 - MF22
MF30



ICEMATIC CF67001101

ICEMATIC 29015004

3063021 REDUCTION GEAR STUFFING GLAND
for Icemaker (SCOTSMAN) - Series AF - MF20 - MF22
MF30



ICEMATIC CF64004000

ICEMATIC 29000003

3063080 WATER GLAND
for Icemaker (SCOTSMAN) MFE61 - MF41 - MF51 - MF61



ICEMATIC CF65040200

ICEMATIC 29000007



Suitable for:

ИСМАТИК
Вини Общепит



Suitable for:

Capacitors
vsezip.ru

3068038 **RUNNING CAPACITOR 35µF 450V**
ø 55x128h mm



+7(812)987-08-81

ИСМАТИК CF62016724

Compressors

3070134 **COMPRESSOR CAJ4519Z CSR BOX HMBP R404a**
power 1.5 Hp. displacement 34.4 cc
220/240V 50Hz
L'UNITE' HERMETIQUE



ИСМАТИК CF67009905

ИСМАТИК 81453661

Curtains

3443070 **CURTAIN 270x70 mm**
for Icemaker (ИСМАТИК) N21



ИСМАТИК 81401600

Doors

3389018 **FRONT DOOR 1075x275 mm**
for Icemaker (SCOTSMAN) B350 - B550



ИСМАТИК 81460184

ИСМАТИК 81460326



Suitable for:

ИЦЕМАТИК

Suitable for:



Drain hoses

vsezip.ru

3450098 DRAIN PIPE \varnothing 20x2000 mm
elbow sleeve \varnothing 20 mm



+7(812)987-08-81

ICEMATIC 19810114

Drip trays for ice makers

3006009 DRIP TRAY ASSEMBLY 180x126 mm
for Icemaker (ICEMATIC) N25



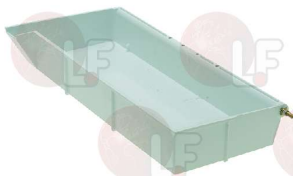
ICEMATIC 81401621

3015063 TANK WATER INLET
for Icemaker (ICEMATIC) - Series N



ICEMATIC 25300000

3123112 DRIP TRAY ASSEMBLY 190x450 mm
for Icemaker (COSMETAL) VEGA100
for Icemaker (WHIRLPOOL) FG100



ICEMATIC 81300090

ICEMATIC 81300091

3123108 DRIP TRAY ASSEMBLY 280x165 mm
for Icemaker (COSMETAL) VEGA40
for Icemaker (WHIRLPOOL) FG40



ICEMATIC 81300045/0

3006001 DRIP TRAY ASSY 180x120 mm
for Icemaker (ICEMATIC)
till 1/04/00
N20 N20L - N25
for Icemaker (SCOTSMAN) GP20



ICEMATIC 81403005

3240374 BIG SPRING 3 mm
for Icemaker (ICEMATIC)
for Icemaker (SCOTSMAN)
for Icemaker (SIMAG)



ICEMATIC 25474602

3240375 BRACKET FOR TURNOVER LEVER
for Icemaker (ICEMATIC)
for Icemaker (SCOTSMAN)
for Icemaker (SIMAG)



ICEMATIC 25325953

ICEMATIC 25325953/1

3240376 BUSHING \varnothing 26 mm
for Icemaker (ICEMATIC)
for Icemaker (SCOTSMAN)
for Icemaker (SIMAG)



ICEMATIC 25110910

ICEMATIC 25110911



Suitable for:

3391936 EVAPORATOR SUPPORT
for Icemaker (ICEMATIC) N20 - N30 - N40 - N50



ICEMATIC
Вини Общепит



Suitable for:

3391937 EVAPORATOR SUPPORT
for Icemaker (ICEMATIC) N20 - N30 - N40 - N50



+7(812)987-08-81

ICEMATIC 25726121

3300050 LOCK PIN FOR SPRING \varnothing 4.5x38 mm
for ALL MODELS



ICEMATIC 25726122

3240377 PLASTIC LEVER
for Icemaker (ICEMATIC)
for Icemaker (SCOTSMAN)
for Icemaker (SIMAG)



ICEMATIC 25560254

ICEMATIC 25560256

3240373 SMALL SPRING 2 mm
for Icemaker (ICEMATIC)
for Icemaker (SCOTSMAN)
for Icemaker (SIMAG)



ICEMATIC 25440110

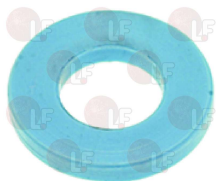
ICEMATIC 81403011

3015063 TANK WATER INLET
for Icemaker (ICEMATIC) - Series N



ICEMATIC 25474600

3240372 WASHER \varnothing 16 mm
for Icemaker (ICEMATIC)
for Icemaker (SCOTSMAN)
for Icemaker (SIMAG)



ICEMATIC 25300000

ICEMATIC 25654016

3006005 DRIP TRAY ASSY 180x445 mm
for Icemaker (ICEMATIC) N100 - N70 - N75 - N80



3240374 BIG SPRING 3 mm
for Icemaker (ICEMATIC)
for Icemaker (SCOTSMAN)
for Icemaker (SIMAG)



ICEMATIC 81423002

ICEMATIC 25474602



Suitable for:

3240375 BRACKET FOR TURNOVER LEVER
for Icemaker (ICEMATIC)
for Icemaker (SCOTSMAN)
for Icemaker (SIMAG)



ICEMATIC 25325953

ICEMATIC 25325953/1

3391937 EVAPORATOR SUPPORT
for Icemaker (ICEMATIC) N20 - N30 - N40 - N50



ICEMATIC 25726122

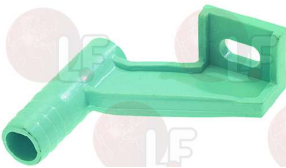
3240377 PLASTIC LEVER
for Icemaker (ICEMATIC)
for Icemaker (SCOTSMAN)
for Icemaker (SIMAG)



ICEMATIC 25440110

ICEMATIC 81403011

3015063 TANK WATER INLET
for Icemaker (ICEMATIC) - Series N



ICEMATIC 25300000

3015915 DRIP TRAY 580x685 mm



ICEMATIC 28180009

ICEMATIC

Вил Общепит

Suitable for:
3391936 EVAPORATOR SUPPORT

for Icemaker (ICEMATIC) N20 - N30 - N40 - N50

+7(812)987-08-81



ICEMATIC 25726121

3300050 LOCK PIN FOR SPRING \varnothing 4.5x38 mm
for ALL MODELS



ICEMATIC 25560254

ICEMATIC 25560256

3240373 SMALL SPRING 2 mm
for Icemaker (ICEMATIC)
for Icemaker (SCOTSMAN)
for Icemaker (SIMAG)



ICEMATIC 25474600

3240372 WASHER \varnothing 16 mm
for Icemaker (ICEMATIC)
for Icemaker (SCOTSMAN)
for Icemaker (SIMAG)



ICEMATIC 25654016





Suitable for:

3006002 SET OF DRIP TRAYS 180x155 mm
for Icemaker (ICEMATIC) N30 - N35



ICEMATIC 81403007

3240375 BRACKET FOR TURNOVER LEVER
for Icemaker (ICEMATIC)
for Icemaker (SCOTSMAN)
for Icemaker (SIMAG)



ICEMATIC 25325953

ICEMATIC 25325953/1

3391936 EVAPORATOR SUPPORT
for Icemaker (ICEMATIC) N20 - N30 - N40 - N50



ICEMATIC 25726121

3300050 LOCK PIN FOR SPRING \varnothing 4.5x38 mm
for ALL MODELS



ICEMATIC 25560254

ICEMATIC 25560256

3240373 SMALL SPRING 2 mm
for Icemaker (ICEMATIC)
for Icemaker (SCOTSMAN)
for Icemaker (SIMAG)



ICEMATIC 25474600

ICEMATIC

Винищепит

Suitable for:
3240374 BIG SPRING 3 mm
for Icemaker (ICEMATIC)
for Icemaker (SCOTSMAN)
for Icemaker (SIMAG)

+7(812)987-08-81



ICEMATIC 25474602

3240376 BUSHING \varnothing 26 mm
for Icemaker (ICEMATIC)
for Icemaker (SCOTSMAN)
for Icemaker (SIMAG)



ICEMATIC 25110910

ICEMATIC 25110911

3391937 EVAPORATOR SUPPORT
for Icemaker (ICEMATIC) N20 - N30 - N40 - N50



ICEMATIC 25726122

3240377 PLASTIC LEVER
for Icemaker (ICEMATIC)
for Icemaker (SCOTSMAN)
for Icemaker (SIMAG)



ICEMATIC 25440110

ICEMATIC 81403011

3015063 TANK WATER INLET
for Icemaker (ICEMATIC) - Series N

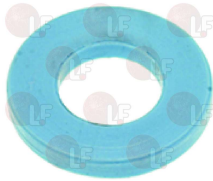


ICEMATIC 25300000



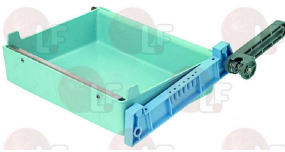
Suitable for:

3240372 WASHER \varnothing 16 mm
for Icemaker (ICEMATIC)
for Icemaker (SCOTSMAN)
for Icemaker (SIMAG)



ICEMATIC 25654016

3006003 SET OF DRIP TRAYS 180x265 mm
for Icemaker (ICEMATIC) N40 - N50 - N55BI



ICEMATIC 81413001

3240375 BRACKET FOR TURNOVER LEVER
for Icemaker (ICEMATIC)
for Icemaker (SCOTSMAN)
for Icemaker (SIMAG)



ICEMATIC 25325953

ICEMATIC 25325953/1

3391936 EVAPORATOR SUPPORT
for Icemaker (ICEMATIC) N20 - N30 - N40 - N50



ICEMATIC 25726121

3300050 LOCK PIN FOR SPRING \varnothing 4.5x38 mm
for ALL MODELS



ICEMATIC 25560254

ICEMATIC 25560256

ICEMATIC

Вини Общепит

Suitable for:

vsezip.ru

+7(812)987-08-81



3240374 BIG SPRING 3 mm
for Icemaker (ICEMATIC)
for Icemaker (SCOTSMAN)
for Icemaker (SIMAG)



ICEMATIC 25474602

3240376 BUSHING \varnothing 26 mm
for Icemaker (ICEMATIC)
for Icemaker (SCOTSMAN)
for Icemaker (SIMAG)



ICEMATIC 25110910

ICEMATIC 25110911

3391937 EVAPORATOR SUPPORT
for Icemaker (ICEMATIC) N20 - N30 - N40 - N50



ICEMATIC 25726122

3240377 PLASTIC LEVER
for Icemaker (ICEMATIC)
for Icemaker (SCOTSMAN)
for Icemaker (SIMAG)



ICEMATIC 25440110

ICEMATIC 81403011



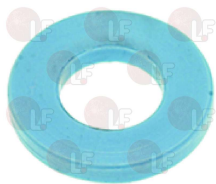
Suitable for:

3240373 SMALL SPRING 2 mm
for Icemaker (ICEMATIC)
for Icemaker (SCOTSMAN)
for Icemaker (SIMAG)



ICEMATIC 25474600

3240372 WASHER \varnothing 16 mm
for Icemaker (ICEMATIC)
for Icemaker (SCOTSMAN)
for Icemaker (SIMAG)



ICEMATIC 25654016

3006004 SET OF DRIP TRAYS 180x265 mm
for Icemaker (ICEMATIC) N55L - N60 - N65



ICEMATIC 81414519

ICEMATIC 81423003

3240375 BRACKET FOR TURNOVER LEVER
for Icemaker (ICEMATIC)
for Icemaker (SCOTSMAN)
for Icemaker (SIMAG)



ICEMATIC 25325953

ICEMATIC 25325953/1

3391936 EVAPORATOR SUPPORT
for Icemaker (ICEMATIC) N20 - N30 - N40 - N50



ICEMATIC 25726121

ICEMATIC

Вилг Общепит



Suitable for:

3015063 TANK WATER INLET
for Icemaker (ICEMATIC) - Series N

+7(812)987-08-81



ICEMATIC 25300000

3240374 BIG SPRING 3 mm
for Icemaker (ICEMATIC)
for Icemaker (SCOTSMAN)
for Icemaker (SIMAG)



ICEMATIC 25474602

3240376 BUSHING \varnothing 26 mm
for Icemaker (ICEMATIC)
for Icemaker (SCOTSMAN)
for Icemaker (SIMAG)



ICEMATIC 25110910

ICEMATIC 25110911

3391937 EVAPORATOR SUPPORT
for Icemaker (ICEMATIC) N20 - N30 - N40 - N50



ICEMATIC 25726122



Suitable for:

3300050 LOCK PIN FOR SPRING \varnothing 4.5x38 mm
for ALL MODELS



ICEMATIC 25560254

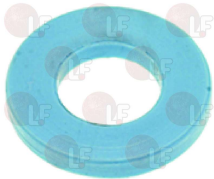
ICEMATIC 25560256

3240373 SMALL SPRING 2 mm
for Icemaker (ICEMATIC)
for Icemaker (SCOTSMAN)
for Icemaker (SIMAG)



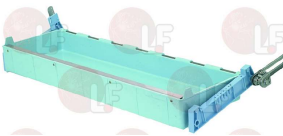
ICEMATIC 25474600

3240372 WASHER \varnothing 16 mm
for Icemaker (ICEMATIC)
for Icemaker (SCOTSMAN)
for Icemaker (SIMAG)



ICEMATIC 25654016

3006006 SET OF DRIP TRAYS 180x680 mm
for Icemaker (ICEMATIC) N12S - N150



ICEMATIC 81442008

3240375 BRACKET FOR TURNOVER LEVER
for Icemaker (ICEMATIC)
for Icemaker (SCOTSMAN)
for Icemaker (SIMAG)



ICEMATIC 25325953

ICEMATIC 25325953/1

ICEMATIC

Вилл Общепит

Suitable for:

3240377 PLASTIC LEVER
for Icemaker (ICEMATIC)
for Icemaker (SCOTSMAN)
for Icemaker (SIMAG)

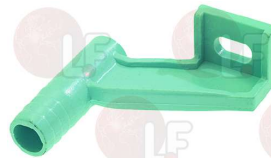
+7(812)987-08-81



ICEMATIC 25440110

ICEMATIC 81403011

3015063 TANK WATER INLET
for Icemaker (ICEMATIC) - Series N



ICEMATIC 25300000

3240374 BIG SPRING 3 mm
for Icemaker (ICEMATIC)
for Icemaker (SCOTSMAN)
for Icemaker (SIMAG)



ICEMATIC 25474602

3240376 BUSHING \varnothing 26 mm
for Icemaker (ICEMATIC)
for Icemaker (SCOTSMAN)
for Icemaker (SIMAG)



ICEMATIC 25110910

ICEMATIC 25110911





Suitable for:

3391936 EVAPORATOR SUPPORT
for Icemaker (ICEMATIC) N20 - N30 - N40 - N50



ICEMATIC
Вини Общепит



Suitable for:

3391937 EVAPORATOR SUPPORT
for Icemaker (ICEMATIC) N20 - N30 - N40 - N50



+7(812)987-08-81

ICEMATIC 25726121

3300050 LOCK PIN FOR SPRING \varnothing 4.5x38 mm
for ALL MODELS



ICEMATIC 25726122

3240377 PLASTIC LEVER
for Icemaker (ICEMATIC)
for Icemaker (SCOTSMAN)
for Icemaker (SIMAG)



ICEMATIC 25560254

ICEMATIC 25560256

3240373 SMALL SPRING 2 mm
for Icemaker (ICEMATIC)
for Icemaker (SCOTSMAN)
for Icemaker (SIMAG)



ICEMATIC 25440110

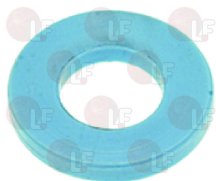
ICEMATIC 81403011

3015063 TANK WATER INLET
for Icemaker (ICEMATIC) - Series N



ICEMATIC 25474600

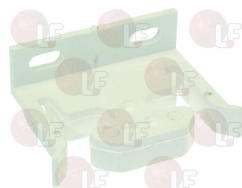
3240372 WASHER \varnothing 16 mm
for Icemaker (ICEMATIC)
for Icemaker (SCOTSMAN)
for Icemaker (SIMAG)



ICEMATIC 25300000

ICEMATIC 25654016

3006007 SPLASH TANK HOLDER
for Icemaker (SCOTSMAN) MV18



3015063 TANK WATER INLET
for Icemaker (ICEMATIC) - Series N



ICEMATIC 25726473

ICEMATIC 25300000



Suitable for:

3015067 WATER TANK

for Icemaker (SCOTSMAN) MV1000 - MV450 - MV600
MV800



ИСМАТИК
Вини Общепит

Suitable for:

vsezip.ru

+7(812)987-08-81



ICEMATIC 25820125

Electronic printed-circuit boards

3390013 COMPLETE PCB SFT 012

with sensor
for Icemaker (SCOTSMAN) ACM125 - ACM225 - ACM85
MCM15AS - MC15



ICEMATIC XG62046200

3390015 CAPACITOR TEMPERATURE SENSOR



ICEMATIC CF62040401

ICEMATIC CF62040411

ICEMATIC XP62040401

ICEMATIC 29070014

3390016 ENVIRONMENT TEMPERATURE SENSOR



3390011 EVAPORATOR TEMPERATURE SENSOR



ICEMATIC CF62040410

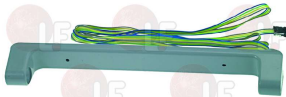
ICEMATIC XP62040410

ICEMATIC 29070009

ICEMATIC 29070013

3390017 ICE LEVEL CONTROL SENSOR

total length 310 mm
for Icemaker (SCOTSMAN) ACM105 - ACM125 - ACM175
ACM225 - ACM85 - MC15 - MC45



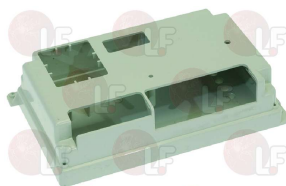
ICEMATIC CF65067400

ICEMATIC XP65067400

ICEMATIC 29040018

ICEMATIC 33580175

3054035 COVER FOR CONTROL BOX



ICEMATIC CF66054600

ICEMATIC 29070021

ICEMATIC 29070021+...

3399040 ELECTRONIC BOARD LID F100C



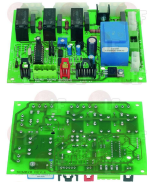
ICEMATIC CF66054700

ICEMATIC 29015057



Suitable for:

3390293 ELECTRONIC CIRCUIT BOARD ICEMOD3
for new versions
for Icemaker (SCOTSMAN) MV12 - MV18 - MV25 - MV50



ICEMATIC 33580100

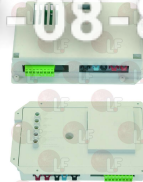
ICEMATIC Вилл Общепит



Suitable for:

3390197 PCB
for Icemaker (ICEMATIC) F100C - F80C

+7(812)987-08-81



ICEMATIC 29070012

ICEMATIC 81469134

3390145 PCB ICEMOD2
for Icemaker (ICEMATIC) N180M - N250M - N500M



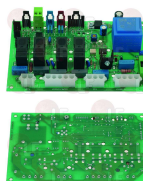
ICEMATIC 33580023

ICEMATIC 33580028

ICEMATIC 33580032

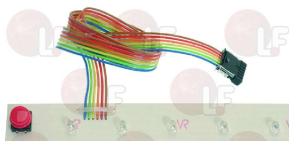
ICEMATIC 33580043

3390295 PCB ICEMOD4
for Icemaker (SCOTSMAN) MV300 - MV450 - MV600
MV800



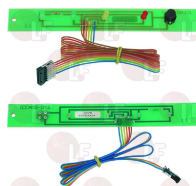
ICEMATIC 33580150

3390296 PCB WITH LED
for Icemaker (SCOTSMAN) MV1000 - MV300 - MV306
MV450 - MV600 - MV800



ICEMATIC 33580151

3390294 PCB WITH LED ICEMOD.DY2
for Icemaker (SCOTSMAN) MV12 - MV18 - MV25 - MV50



ICEMATIC 33580024

Fittings

3349200 DRAIN FITTING



ICEMATIC CF66022400

3349201 FITTING NUT



ICEMATIC CF66053500

3349201 FITTING NUT



ICEMATIC CF66053500

3349190 WATER INLET FITTING \varnothing 3/8"X3/4"
for AF10 - AF20 - AF30 - ACM35



ICEMATIC CF73320400



Suitable for:

3349250 WATER OUTLET FITTING \varnothing 20x69 mm



ICEMATIC 25690803

ICEMATIC 25690806

ICEMATIC ВИН ОБЩЕПИТ

Suitable for:

vsezip.ru

+7(812)987-08-81



Floats

3188001 **FLOAT ASSEMBLY**
for Icemaker (SCOTSMAN) AF10 - AF20 - AF30



ICEMATIC CF66058500

ICEMATIC CF78312700

3527166 **TAP WITH FLOAT**
connection M11 x \varnothing 6 mm



ICEMATIC 19864010

ICEMATIC 19864011

Gaskets and seals

3061040 **EPDM O-RING GASKET 04137**



ICEMATIC CF64009302

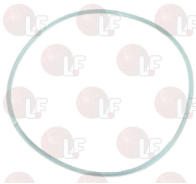
ICEMATIC 29000023

3786202 **O-RING OR 03850 EPDM**



ICEMATIC 1300061738

3390511 **O-RING SILICONE**
for Icemaker (SCOTSMAN) ACM125 - ACM175 - ACM45
ACM55 - ACM85



ICEMATIC CF64004120

ICEMATIC 29000022

3243139 **O-RING 02025 EPDM**



ICEMATIC CF64010000

1186833 **O-RING 03100 EPDM**



ICEMATIC CF64004101

ICEMATIC 29000002



Suitable for:

Suitable for:



Gears

3212004 FINAL GEARWHEEL
for Icemaker (SCOTSMAN) MFE61 - MF41 - MF51 - MF61



ICEMATIC CF65115800

ICEMATIC 29028005

3212002 GEARBOX ASSEMBLY
for Icemaker (SCOTSMAN) MFE61 - MF41 - MF51 - MF61



ICEMATIC CFA3123001

ICEMATIC 29070007

3212005 GEARWHEEL AND FIBRE PINION
for Icemaker (SCOTSMAN) MFE61 - MF41 - MF51 - MF61



ICEMATIC CF65115600

ICEMATIC 29028006

3212003 GEARWHEEL AND INTERM. PINION
for Icemaker (SCOTSMAN) MFE61 - MF41 - MF51 - MF61



ICEMATIC CF65115700

ICEMATIC 29028004

Greases

3180019 REDUCTION GEAR GREASE 0.5 Kg



ICEMATIC CF06029401

ICEMATIC CF06029404

Hinges

3053515 ADJUSTABLE HINGE



ICEMATIC 19120045

3053264 HINGE 40x35 mm
distance 27 mm
for Icemaker (ICEMATIC) N25 - N35 - N45 - N55
N70 - N90



ICEMATIC 19120050

Insulators

3180045 ESCUTCHEON INSULATION
for Icemaker (SCOTSMAN) MFE61 - MF41 - MF51 - MF61



ICEMATIC CF06055101



Suitable for:

ИСМАТИК

Suitable for:



Lamps

3221024 RED INDICATOR LAMP 230V
head \varnothing 15 mm - hole \varnothing 13 mm - 120°C
universal application



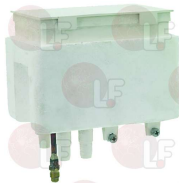
ICEMATIC 33576295

3221025 ORANGE INDICATOR LAMP 230V
hole \varnothing 13 mm - head \varnothing 15 mm - 120°C
universal application



Level tanks

3188002 TANK AND FLOAT ASSY
for Icemaker (SCOTSMAN) AF10



ICEMATIC CF79312601

ICEMATIC 29087022

3188001 FLOAT ASSEMBLY
for Icemaker (SCOTSMAN) AF10 - AF20 - AF30



ICEMATIC CF66058500

ICEMATIC CF78312700

3188004 TANK LID
for Icemaker (SCOTSMAN) AF10 - AF20 - AF30



ICEMATIC CF66036300

3188004 TANK LID
for Icemaker (SCOTSMAN) AF10 - AF20 - AF30



ICEMATIC CF66036300

Microswitches

3240351 FLOAT MICROSWITCH FOR DRIP TRAY
contact capacity 4A 230V
for Icemaker (ICEMATIC) N100 - N20L - N30 - N40
N50 - N55 - N55BI - N65 - N75 - N80



ICEMATIC 81404080

ICEMATIC 81409179

3240352 FLOAT MICROSWITCH FOR DRIP TRAY
contact capacity 4A 230V
for Icemaker (ICEMATIC) N12S(VDE) - N150

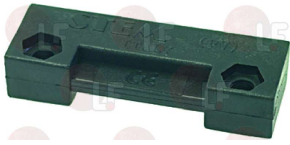


ICEMATIC 81449091



Suitable for:

3240610 **MAGNET FOR MICRO SWITCH HOOD**



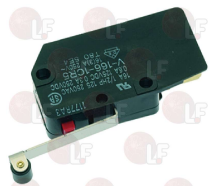
ICEMATIC 19355004

3240885 **MICROSWITCH**
Z15 GW 22B 16A 250V
for Icemaker (ICEMATIC) N1 - N12 - N2 - N3 - N4
N5 - N6 - N7



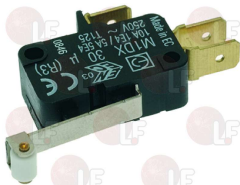
ICEMATIC 19410300

3803009 **MICROSWITCH 16A 250V V166-1CR5**



ICEMATIC 19410208

3240350 **MICROSWITCH 16A 230V**
for Icemaker (ICEMATIC) N100 - N125(VDE) - N150
N20 - N20L - N30 - N40 - N50 - N55 - N55BI
N65 - N75 - N80



ICEMATIC 19410201

ICEMATIC 19410209

ICEMATIC

Вил Общепит



Suitable for:

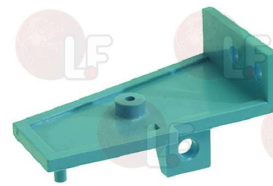
3240883 **MICROSWITCH**
F53 161.1 16A - 250V
for Icemaker (ICEMATIC) N20 - N30

+7(812)987-08-81



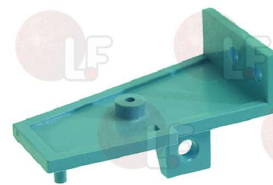
ICEMATIC

3803055 **MICROSWITCH SUPPORT**



ICEMATIC 25525419

3803055 **MICROSWITCH SUPPORT**



ICEMATIC 25525419

Motors

3240374 **BIG SPRING 3 mm**
for Icemaker (ICEMATIC)
for Icemaker (SCOTSMAN)
for Icemaker (SIMAG)



ICEMATIC 25474602

3240375 **BRACKET FOR TURNOVER LEVER**
for Icemaker (ICEMATIC)
for Icemaker (SCOTSMAN)
for Icemaker (SIMAG)



ICEMATIC 25325953

ICEMATIC 25325953/1

3240376 BUSHING \varnothing 26 mm
for Icemaker (ICEMATIC)
for Icemaker (SCOTSMAN)
for Icemaker (SIMAG)



ICEMATIC 25110910

ICEMATIC 25110911

3240379 COMPLETE GEARMOTOR DISC
 \varnothing 100 mm
for Icemaker (ICEMATIC)



ICEMATIC 81413043

3340066 DISC FOR TILT GEARMOTOR
for Icemaker (ICEMATIC) N20 - N30
for Icemaker (SCOTSMAN) GP20 - GP30



ICEMATIC 25260000

3240838 FAN FOR ELECTRIC MOTOR
for Icemaker (SCOTSMAN) MFE61 - MF41 - MF51 - MF61
for Icemaker (WHIRLPOOL) AGB022 - AGB024



ICEMATIC CF65034000

3240360 GEARMOTOR FOR PADDLES LIP 000E
11W 230V 50HZ - COUNTERCLOCKWISE 50 Rpm
for Icemaker (EURFRIGOR)
for Icemaker (ICEMATIC)
for Icemaker (MIGEL)
for Icemaker (SCOTSMAN)
for Icemaker (SIMAG)



ICEMATIC 19440059

ICEMATIC 19440060

3240371 SUPPORT FOR PADDLE MOTOR
for Icemaker (ICEMATIC)
for Icemaker (SCOTSMAN)
for Icemaker (SIMAG)



ICEMATIC 25725433

ICEMATIC 25725439

3240631 MOTOR 35W EMI 83D-2535
230V 50/60Hz 1300 rpm 95W Input
with starting capacitor 2.5 μ F
4 screws M4 for flange and bracket mounting
distance 17 mm
shaft length 34 mm



ICEMATIC 18562524

3240377 PLASTIC LEVER
for Icemaker (ICEMATIC)
for Icemaker (SCOTSMAN)
for Icemaker (SIMAG)



ICEMATIC 25440110

ICEMATIC 81403011

+7(812)987-08-81

vsezi.ru



Suitable for:

3240373 SMALL SPRING 2 mm
for Icemaker (ICEMATIC)
for Icemaker (SCOTSMAN)
for Icemaker (SIMAG)



ICEMATIC 25474600

ICEMATIC

Вил Общепит



Suitable for:

3240954 SUCTION BLADE ø 250 mm 28°

vsezip.ru

+7(812)987-08-81



ICEMATIC CF62041934

3240965 SUCTION BLADE ø 300 mm 28°



ICEMATIC CF6200001

ICEMATIC CF62041936

3240371 SUPPORT FOR PADDLE MOTOR
for Icemaker (ICEMATIC)
for Icemaker (SCOTSMAN)
for Icemaker (SIMAG)



ICEMATIC 25725433

ICEMATIC 25725439

ICEMATIC 25726116

3240365 TILTING GEARMOTOR BITRON 97103
11W 230V 50HZ - COUNTERCLOCKWISE 0.72Rpm
for Icemaker (ICEMATIC) N100 - N12 - N12S - N150
N4 - N5 - N6 - N7



ICEMATIC 19440057

3240363 TILTING GEARMOTOR LIP 001
11W 230V 50HZ - CLOCKWISE 0.7Rpm
for Icemaker (ICEMATIC) N20 - N20L - N30 - N30L



ICEMATIC 19440058

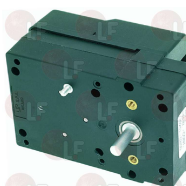
ICEMATIC 19440063

3240364 TILTING GEARMOTOR LIP 010
12W 230V 50HZ - COUNTERCLOCKWISE 0.72Rpm
for Icemaker (ICEMATIC) N100 - N12S - N150 - N40
N50 - N55 - N55BI - N65 - N70 - N75 - N80



ICEMATIC 19440065

3240366 TILTING GEARMOTOR LIP 021
11W 230V 50HZ - CLOCKWISE 1 Rpm
for Icemaker (ICEMATIC) N20L - N30
for Icemaker (WHIRLPOOL) FG31A



ICEMATIC 19440073

3240898 TILTING GEARMOTOR LIP 021B
11W 230V 50Hz - CLOCKWISE 1 Rpm
for Icemaker (ICEMATIC) N20 - N30



ICEMATIC 81404024

3324003 TRANSMISSION SHAFT
for Icemaker (SCOTSMAN) MFE61 - MF41 - MF51 - MF61



ICEMATIC CF65115900

ICEMATIC 29000017



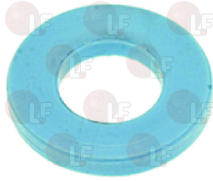
Suitable for:

ИСМАТИК

Suitable for:



3240372 WASHER \varnothing 16 mm
for Icemaker (ICEMATIC)
for Icemaker (SCOTSMAN)
for Icemaker (SIMAG)



vsezip.ru

+7(812)987-08-81

ICEMATIC 25654016

3240211 5-POLE MOTOR ELCO 10W
230/240V 50/60Hz 1300Rpm - 38W Input
VN 10-20



ICEMATIC CF62041902

ICEMATIC 18562496

ICEMATIC 29020001

ICEMATIC 29020003

3240954 BRACKET HEIGHT 110 mm



3240950 BRACKET HEIGHT 39 mm



3240951 BRACKET HEIGHT 52 mm



3240221 BRACKET HEIGHT 72 mm



3240223 BRACKET HEIGHT 84 mm



3240960 SUCTION BLADE \varnothing 154 mm 28°



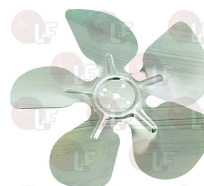
3240961 SUCTION BLADE \varnothing 170 mm 28°



3240220 SUCTION BLADE \varnothing 200 mm 28°
for Icemaker (WHIRLPOOL) AGB022



3240222 SUCTION BLADE \varnothing 230 mm 28°



ICEMATIC 18740023



Suitable for:

3240902 5-POLE MOTOR ELCO 16W
230/240V 50/60Hz 1300Rpm - 65W Input
VN 16-25



ICEMATIC CF62041904

3240950 BRACKET HEIGHT 39 mm



3240221 BRACKET HEIGHT 72 mm



3240960 SUCTION BLADE ø 154 mm 28°



3240220 SUCTION BLADE ø 200 mm 28°
for Icemaker (WHIRLPOOL) AGB022



ICEMATIC 18740023

3240964 SUCTION BLADE ø 250 mm 28°



ICEMATIC CF62041934

ICEMATIC

Вини Общепит



Suitable for:

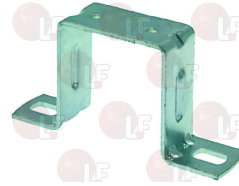
3240954 BRACKET HEIGHT 110 mm

vsezip.ru

+7(812)987-08-81



3240951 BRACKET HEIGHT 52 mm



3240223 BRACKET HEIGHT 84 mm



3240961 SUCTION BLADE ø 170 mm 28°



3240222 SUCTION BLADE ø 230 mm 28°



3240904 5-POLE MOTOR ELCO 34W
230/240V 50/60Hz 1300Rpm - 120W Input
VNT 34-45



ICEMATIC CF62041906

ICEMATIC 29020005

3240950 BRACKET HEIGHT 39 mm



3240221 BRACKET HEIGHT 72 mm



3240220 SUCTION BLADE \varnothing 200 mm 28°
for Icemaker (WHIRLPOOL) AGB022



ICEMATIC 18740023

3240964 SUCTION BLADE \varnothing 250 mm 28°



ICEMATIC CF62041934



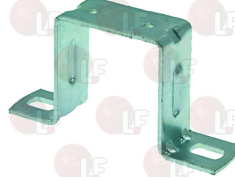
3240954 BRACKET HEIGHT 110 mm

vsezip.ru

+7(812)987-08-81



3240951 BRACKET HEIGHT 52 mm



3240223 BRACKET HEIGHT 84 mm



3240222 SUCTION BLADE \varnothing 230 mm 28°



3240965 SUCTION BLADE \varnothing 300 mm 28°



ICEMATIC CF62000001

ICEMATIC CF62041936

Nozzles for ice makers

3390516 3-NOZZLE CAPS KIT
with gaskets and screws
for Icemaker (SCOTSMAN) ACM125 - ACM175 - ACM55
ACM85 - AC45



ICEMATIC CF06052900

ICEMATIC CF66051901



Suitable for:

Suitable for:



Paddle shafts for ice makers

3300002 BLADE FOR MIXER
for Icemaker (ICEMATIC)
for Icemaker (SCOTSMAN)
for Icemaker (SIMAG)

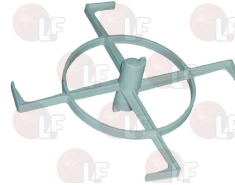


ICEMATIC 24555520
ICEMATIC 25545520/2

ICEMATIC 24555522
ICEMATIC 25545522

ICEMATIC 25545520

3240892 MIXER BLADE
for Icemaker (COSMETAL) VEGA100 - VEGA20 - VEGA30
VEGA40 - VEGA60
for Icemaker (WHIRLPOOL) FG100 - FG20 - FG30
FG40 - FG60



ICEMATIC 2781336

3240893 PADDLE SHAFT SUPPORT BUSHING
for Icemaker (COSMETAL) VEGA100 - VEGA20 - VEGA30
VEGA40 - VEGA60
for Icemaker (WHIRLPOOL) FG100 - FG20 - FG30
FG40 - FG60



ICEMATIC 2781221

3005004 PADDLE SHAFT 165 mm
for Icemaker (ICEMATIC) N20 - N20L



ICEMATIC 25030006

3391050 SUPPORTS FOR PADDLED SHAFT
for all models
for Icemaker (ICEMATIC)
for Icemaker (SCOTSMAN)
for Icemaker (SIMAG)



ICEMATIC 25726115

ICEMATIC 25726115/3

3005005 PADDLE SHAFT 205 mm
for Icemaker (ICEMATIC) N30 - N30L



ICEMATIC 25030007

3391050 SUPPORTS FOR PADDLED SHAFT
for all models
for Icemaker (ICEMATIC)
for Icemaker (SCOTSMAN)
for Icemaker (SIMAG)



ICEMATIC 25726115

ICEMATIC 25726115/3



Suitable for:

3005006 PADDLE SHAFT 315 mm
for Icemaker (ICEMATIC) N40 - N50 - N55 - N55BI
N55L - N65



ICEMATIC 25030010

ICEMATIC
Вил Общепит



Suitable for:

3391050 SUPPORTS FOR PADDLED SHAFT
for all models
for Icemaker (ICEMATIC)
for Icemaker (SCOTSMAN)
for Icemaker (SIMAG)



ICEMATIC 25726115

ICEMATIC 25726115/3

3005007 PADDLE SHAFT 495 mm
for Icemaker (ICEMATIC) N100 - N75 - N80



ICEMATIC 25030011

ICEMATIC 25030011

3391050 SUPPORTS FOR PADDLED SHAFT
for all models
for Icemaker (ICEMATIC)
for Icemaker (SCOTSMAN)
for Icemaker (SIMAG)



ICEMATIC 25726115

ICEMATIC 25726115/3

Pins

3300050 LOCK PIN FOR SPRING \varnothing 4.5x38 mm
for ALL MODELS



ICEMATIC 25560254

ICEMATIC 25560256

3324010 PIPE 20 mm
external \varnothing 10 mm
internal \varnothing 6 mm



ICEMATIC 19800179

ICEMATIC 25110914

Pressure valves for refrigeration

3526550 PRESSURE VALVE V46AA-9950 G 3/8"
pressure range 5..18 bar
capillary length 750 mm - fitting to be welded



ICEMATIC CF62011100

ICEMATIC 19870815



Suitable for:

Suitable for:



Probes

3390015 CAPACITOR TEMPERATURE SENSOR



ICEMATIC CF62040401
ICEMATIC 29070014

ICEMATIC CF62040411

ICEMATIC XP62040401

3390011 EVAPORATOR TEMPERATURE SENSOR



ICEMATIC CF62040410
ICEMATIC 29070013

ICEMATIC XP62040410

ICEMATIC 29070009

+7(812)987-08-81

3390012 ICE LEVEL CONTROL SENSOR



ICEMATIC 29070010

ICEMATIC 33580065

ICEMATIC 33580065/1

3390139 WATER LEVEL SENSOR
for TC180



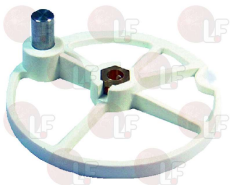
ICEMATIC CF62040404

ICEMATIC 29015055

ICEMATIC 29070016

Pulleys

3240895 PULLEY



ICEMATIC 2781349

Pumps

3122010 ELECTROPUMP REBO MH30F1 LH
30W 230V 50Hz cl.B
connections \varnothing 13 mm
for Icemaker (SCOTSMAN) ACM25 - ACM45 - ACM55
ACM85



ICEMATIC CS62043300

ICEMATIC 19550113

3122266 ELECTROPUMP GRE 620430-03
50W 230V 50Hz
connection \varnothing 21 mm
for new series
ex REBO MH50F
for Icemaker (SCOTSMAN) ACM125



ICEMATIC 19550109

3122380 ELECTROPUMP REBO MH30F1 RH
30W 230V 50Hz
connections \varnothing 13 mm
for Icemaker (ITV) DELTADP140 - GALADP140



ICEMATIC 19535157



Suitable for:

ИЦЕМАТИК

Suitable for:



Relays

3351901 RELAY 60.62 10A 230V 50/60Hz
2 switching contacts



ICEMATIC 19620101

ICEMATIC 19620107

+7(812)987-08-81

Scrolls

3719001 ICE-BREAKER SCROLL
for Icemaker (SCOTSMAN) MFE61 - MF51 - MF61

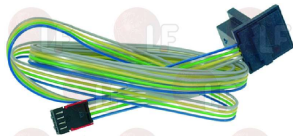


ICEMATIC CF72419803

ICEMATIC CF78419803

Sensors

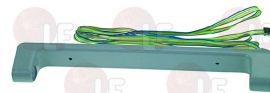
3390144 HALL EFFECT SENSOR
for Icemaker (SCOTSMAN) - Series AF



ICEMATIC CF62040403

ICEMATIC 29070015

3390017 ICE LEVEL CONTROL SENSOR
total length 310 mm
for Icemaker (SCOTSMAN) ACM105 - ACM125 - ACM175
ACM225 - ACM85 - MC15 - MC45



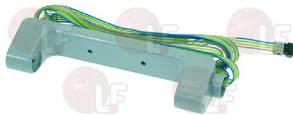
ICEMATIC CF65067400

ICEMATIC XP65067400

ICEMATIC 29040018

ICEMATIC 33580175

3390135 ICE LEVEL SENSOR
length 180 mm
for Icemaker (SCOTSMAN) AF10 - AF100 - AF20 - AF30
AF80 - MF20 - MF22 - MF30



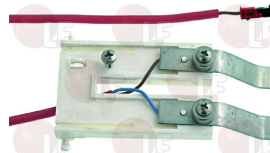
ICEMATIC CF65067402

ICEMATIC CF72503401

ICEMATIC 29070017

ICEMATIC 33580104

3390018 ICE THICKNESS SENSOR
cable 850 mm
for Icemaker (SCOTSMAN) MV18 - MV21 - MV25 - MV32



ICEMATIC 81453007

ICEMATIC 81453114

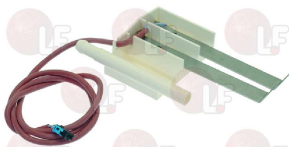
ICEMATIC 81453434



Suitable for:

3390297 WATER LEVEL SENSOR

for Icemaker (SCOTSMAN) MV1000 - MV300 - MV450
MV600 - MV800



ICEMATIC 81453590

ICEMATIC 81453796

ICEMATIC

Suitable for:

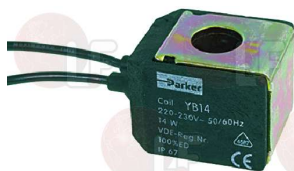
vsezip.ru

+7(812)987-08-81



Solenoid valves

3120917 COIL PARKER YB14 220V 14W WITH CABLE 50/60Hz



ICEMATIC CF62030648

3120950 OUTLET SOLENOID VALVE ELTEK connections \varnothing 10 mm 220/240V 50/60Hz 15VA for Icemaker (SCOTSMAN) for Icemaker (SIMAG)



ICEMATIC 19865532

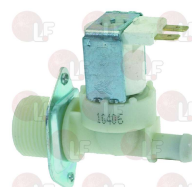
ICEMATIC 19865598

3120381 SOLENOID VALVE 220/240V 50/60Hz solenoid valve 180° inlet 3/4" 2 outlets \varnothing 10 mm with flowrate regulators 1,2 l/min and 2,5 l/min



ICEMATIC XP65010551

3120375 SOLENOID VALVE 220/240V 50/60Hz solenoid valve 180° inlet 3/4" outlet \varnothing 10 mm with flowrate regulator 1,2 l/min



ICEMATIC 19865518

3120195 SOLENOID VALVE 220V 50/60Hz for water drain \varnothing 14 mm for Icemaker (SCOTSMAN) CM450



ICEMATIC 19865525

ICEMATIC 81454760



Suitable for:

3120952 SOLENOID VALVE 230V 50Hz

solenoid valve 180°
inlet \varnothing 3/4"
2 outlets \varnothing 10 mm
max. temperature 90°C
for WATER COOLING VERSION
for Icemaker (ICEMATIC) N12S - N20 - N20L - N30
N40 - N55 - N55B - N75



ICEMATIC 19865509

3120951 SOLENOID VALVE 230V 50/60Hz

solenoid valve 180°
inlet \varnothing 3/4"
outlet \varnothing 10 mm
with flowrate adjuster 2 l/min
max temperature 90°C
for AIR COOLING VERSION
for Icemaker (ICEMATIC) N100 - N12S - N150 - N20
N20L - N30 - N40 - N50 - N55 - N55BI - N65
N75 - N80



ICEMATIC 19865502

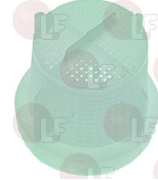
ICEMATIC

ВНИ Общепит

3120000 FILTER FOR INLET SOLENOID VALVE ELBI

vsezip.ru

+7(812)987-08-81

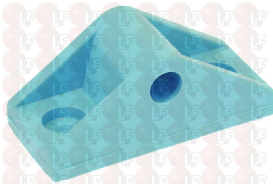


3120000 FILTER FOR INLET SOLENOID VALVE ELBI

Supports

3391016 DEFLECTOR SHAFT HOLDER

for Icemaker (ICEMATIC) N25 - N35 - N45 - N50BI
N55 - N70 - N90



ICEMATIC 25726279

3391936 EVAPORATOR SUPPORT

for Icemaker (ICEMATIC) N20 - N30 - N40 - N50



ICEMATIC 25726121

3391937 EVAPORATOR SUPPORT

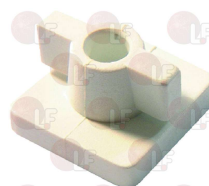
for Icemaker (ICEMATIC) N20 - N30 - N40 - N50



ICEMATIC 25726122

3240894 PADDLE SHAFT SUPPORT

internal hole \varnothing 6 mm
for Icemaker (COSMETAL) VEGA100 - VEGA20 - VEGA30
VEGA40 - VEGA60
for Icemaker (WHIRLPOOL) FG100 - FG20 - FG30
FG40 - FG60



ICEMATIC 2781222





Suitable for:

3240896 PADDLE SHAFT SUPPORT
internal hole \varnothing 4 mm



ICEMATIC 2781223

ICEMATIC

Suitable for:

3321050 SUPPORTS FOR PADDLED SHAFT
for all models
for Icemaker (ICEMATIC)
for Icemaker (SCOTSMAN)
for Icemaker (S.MAG)



ICEMATIC 25726115

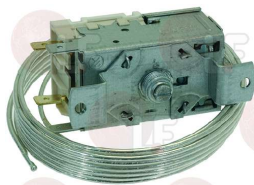
ICEMATIC 25726115/3



+7(812)987-06-81

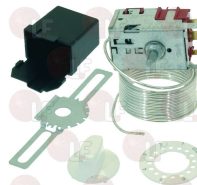
Thermostats

3444534 CONTAINER THERMOSTAT K50L3324
2 contacts 6A 250V
capillary 2000 mm
screw adjustable
for Icemaker (ICEMATIC) N21



ICEMATIC 19797026

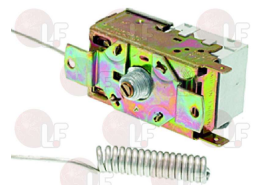
3444533 DANFOSS THERMOSTAT 077B7008
3 contacts 6A 250V
capillary 2000 mm
D-shaped pin \varnothing 6x4.6 mm
COLD -2°C, WARM +10°C



ICEMATIC 19797007

ICEMATIC 19797012

3444156 EVAPORATOR THERMOSTAT K22 L1020
3 contacts 6A 250V
capillary 2000 mm
bulb \varnothing 8x40 mm
COLD -20.5°C - WARM -1.0°C
with adjusting screw
for Icemaker (SCOTSMAN) ACM125 - ACM85



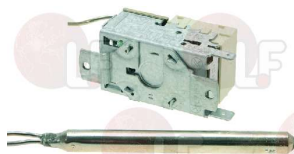
ICEMATIC 19797009

3744054 SAFETY THERMOSTAT RANCO LM7 P5098
2 contacts
actuation 80°C
differential 6°C



ICEMATIC 19797023

3444250 THERMOSTAT FOR CONTAINER K55 L5081
2 contacts 6A 250V
capillary 1200 mm
bulb \varnothing 10x110 mm
for Icemaker (ICEMATIC) N12S - N20 - N20L - N30
N40 - N50 - N55 - N65



ICEMATIC 19797017

ICEMATIC 19797302

3444252 THERMOSTAT FOR CONTAINER K55 L5082
2 contacts 6A 250V
capillary 1100 mm
bulb \varnothing 10x110 mm
for Icemaker (ICEMATIC) N1 - N100 - N12 - N2 - N20
N3 - N30 - N7 - N75 - N80



ICEMATIC 19797018

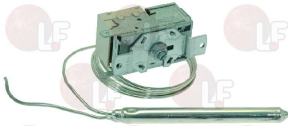
ICEMATIC 19797303



Suitable for:

3444205 THERMOSTAT FOR CONTAINER K55L1042

2 contacts 6A 250V
capillary length 1200 mm
bulb \varnothing 10x110 mm
COLD +1.7°C - WARM +9.5°C
with adjusting screw
for Icemaker (COSMETAL) VEGA100 - VEGA20 - VEGA30
VEGA40 - VEGA60
for Icemaker (WHIRLPOOL) FG100 - FG20 - FG30
FG40 - FG60



ICEMATIC 3824917

ICEMATIC Вит Общепит

Suitable for:

vsezip.ru

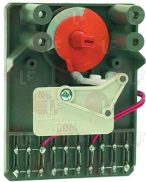
+7(812)987-08-81



Timers

3322219 TIMER P36 2 CAMS 12 MINUTES

230V 50Hz
for Icemaker (SIMAG) SD22 - SD23 - SD30



ICEMATIC CS62044100

ICEMATIC 19800001

Water tight seals

3453901 REDUCER OIL SEAL

internal: \varnothing 12 mm
external \varnothing 18 mm
for AF 10-20-30-80



ICEMATIC CF64008300

ICEMATIC 29040001

3453902 REDUCER OIL SEAL

internal: \varnothing 21 mm
external \varnothing 32 mm
for AF 10-20-30-80



ICEMATIC CF02160700

ICEMATIC CF64001901

Зип Общепит

The data herewith contained may change without notice and LF SpA cannot be held responsible for possible errors stated or resulting by the use of this document. All rights reserved. No part of this publication may be reproduced without written permission by LF SpA.

+7(812)987-08-81



LF SpA

via Voltri, 80 - 47522 Cesena (FC) ITALIA
Tel. +39 0547 34 11 11 - Fax +39 0547 34 11 10
www.lfrcambi724.it - www.lfrcambi724.mobi
info@lfrcambi.it
Export Dept.: Tel. +39 0547 34 11 50 - Fax: +39 0547 34 11 55
www.lfspareparts724.com - www.lfspareparts724.mobi
export@lfspareparts.com

FRANCE



EPGC Sas

13, Rue des Forts - 59960 Neuville en Ferrain
Tél. +33 (0)3 20 25 06 21
Fax +33 (0)3 20 25 34 12
www.epgc.com
www.epgc724.mobi
epgc@epgc.com

DEUTSCHLAND



LF GmbH

Junkersstrasse, 1 - D-82178 Puchheim - München
Tel. +49 89 89 45 78 66
Fax +49 89 89 45 78 88
www.lfersatzteile724.de
www.lfersatzteile724.mobi
info@lfersatzteile.de

SCHWEIZ



LF GmbH Verkaufsbüro

Sennweidstrasse, 45 - CH-6312 Steinhausen
Tel. +41 (0)41 760 15 80-1
Fax +41 (0)41 760 15 85
www.lfersatzteile724.ch
www.lfersatzteile724.mobi
info@lfersatzteile.ch

ESPAÑA



LF Repuestos Horeca S.L.U.

Calle Ciudad Real, 10 - 45517 Escalonilla - Toledo
Tif. +34 91 477 91 00
Fax +34 91 477 90 81
www.lfrepuestos724.es
www.lfrepuestos724.mobi
info@lfrepuestos.es

UNITED KINGDOM



LF Spare Parts Ltd.

A10a Lakeside Business Park, Broadway Lane
South Cerney, Gloucestershire GL7 5XL
Tel. +44 (0)1285 86 16 25
Fax +44 (0)1285 86 39 49
www.lfspareparts724.co.uk
www.lfspareparts724.mobi
info@lfspareparts.co.uk

RUSSIA



OOO LF

ul, Anatoliya Zhivova, 8 - office 1 - 123100 Moscow
Tel. +7 499 259 85 75
Fax +7 495 725 26 53
www.lfspareparts724.ru
www.lfspareparts724.mobi
info@lfspareparts.ru

CHINA



LF China

Room 102, House 8, Lane 725, Mao Tai Rd.
Changning Dist. - 200336 Shanghai
Tel. +86 (0)21 33 53 66 31
Fax +86 (0)21 33 53 66 32
www.lfspareparts724.com
www.lfspareparts724.mobi
china@lfspareparts.com