

Зип Общепит

Ersatzteilliste vsezip.ru
Spare parts list +7(812)987-08-81
Liste de pièces détachées

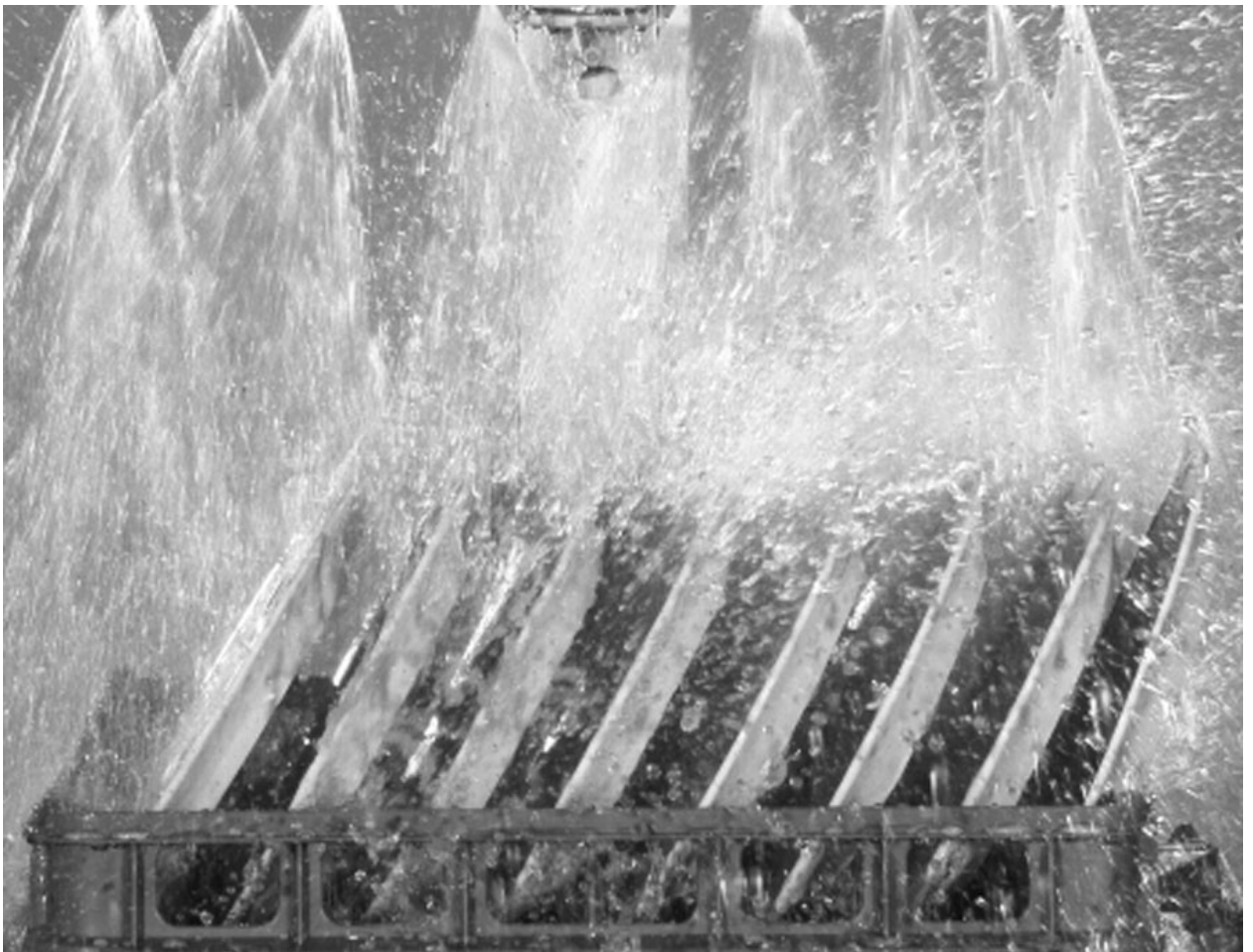


Universalwaschautomat
Universal warewashing machine
Lave-batteries

FV 130.2

400V 50HZ 3P / MIKE 2

24V Steuerspannung
24V Control voltage
24V Tension de commande



Зип Общепит

vsezip.ru

+7(812)987-08-81

| | Inhaltsverzeichnis: | Contents: | Contenu: |
|-------|------------------------------------|-------------------------------------|---|
| 01.30 | Waschpumpe | Wash pump | Pompe de lavage |
| 03.20 | Waschsystem | Wash system | Systeme de lavage |
| 03.21 | Nachspülsystem | Final rinse system | Systeme rincage final |
| 03.22 | Nachspülsystem seitlich | Final rinse system lateral | Systeme de rincage final lateral |
| 04.24 | Magnetventil | Solenoid valve | Electrovanne |
| 06.07 | Niveauregelung | Level control | Régulation de niveau |
| 08.47 | Einbauboiler | Incorporated boiler | Surchauffeur incorporé |
| 08.61 | Einbauboiler Dampfsystem | Incorporated boiler Steam system | Surchauffeur incorporé Systeme de vapeur |
| 09.19 | Tankheizung | Tank heating | Chauffage de bac |
| 10.14 | Dosiergeräte | Dosing units | Doseurs |
| 11.70 | Elektroniksteuerung | Electronic control | Commande électronique |
| 11.82 | Elektroniksteuerung Dampfsystem | Electronic control Steam system | Commande électronique Systeme de vapeur |
| 13.24 | Baugruppen/Einzelteile | Component blocks/Parts | Blocs/Pièces détachées |
| 18.14 | Laugenpumpe | Drain pump | Pompe de vidange |
| 21.07 | Dampfsystem | Steam system | Systeme de vapeur |
| 22.10 | Drucksteigerungspumpe | Booster pump | Surpresseur |
| 24.07 | Freier Auslauf | Air gap | Ecoulement libre |
| 29.01 | Wascharmantrieb | Wash arm drive | Commande du bras de lavage |

KENNZEICHNUNG DER ER-SATZTEILE

* / V DIESE TEILE EMPFEHLEN WIR AUF LAGER ZU LEGEN!
V VERSCHLEISSTEIL!

ÄNDERUNGEN IN AUSFÜHRUNG UND KONSTRUKTION VORBEHALTEN.

SPECIAL MARKS OF SPARES

WE RECOMMEND TO STORE THESE PARTS!
WEAR AND TARE PART!

WE RESERVE THE RIGHT TO CHANGE EXECUTION AND CONSTRUCTION.

MARQUAGE SPECIALES DES PIECES

NOUS RECOMMANDONS DE PRENDRE CES PIECES EN STOCK!
PIÈCE D'USURE!

NOUS NOUS RESERVONS LE DROIT DE CHANGER L'EXECUTION ET LA CONSTRUCTION.

MEIKO Maschinenbau GmbH & Co.
Englerstraße 3
D-77652 Offenburg
Telefon: 0781 / 203 - 0
Telefax: 0781 / 203 - 1179
www.meiko.de
e-mail: info@meiko.de

01.30 WASCHPUMPE

01.30 WASH PUMP

01.30 POMPE DE LAVAGE

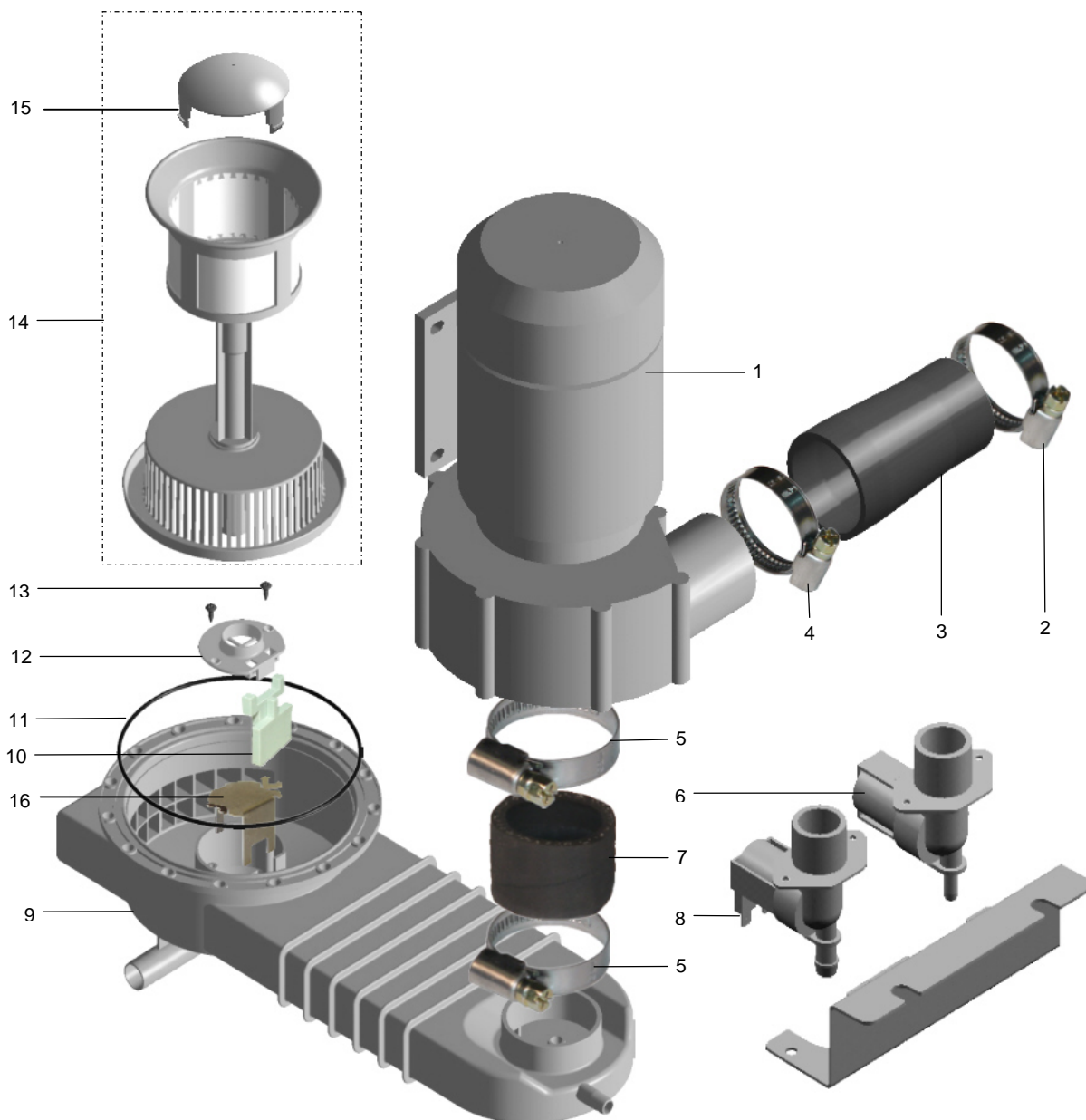
Зип Общепит

vsezip.ru

+7(812)987-08-81



PU1_30.doc
2005-05-25/BP



01.30 WASCHPUMPE**01.30 WASH PUMP****01.30 POMPE DE LAVAGE**

Зип Общепит

vsezip.ru

PU1_30.doc
2005-05-25/BP

+7(812)987-08-81

| POS | IDENT. NR. IDENT. NO. | BEZEICHNUNG | DESIGNATION | DESIGNATION |
|-----|--------------------------|---|--|---|
| 1 | * 9600380 | WASCHPUMPE 2,6 KW KPL. | WASH PUMP 2,6 KW CPL. | POMPE DE LAVAGE 2,6 KW CPL. |
| | V 9541785 | GLEITRINGDICHTUNG KPL. | SLIDING SEAL CPL. | JOINT AXIAL CPL. |
| | * 9541786 | DICHTUNGSSATZ MOTORWELLE | PACKING MOTOR SHAFT | JOINT ABBRE DE MOTEUR |
| | * 9541787 | PUMPENGEHÄUSE | PUMP HOUSING | CORPS DE POMPE |
| | 9541788 | GEHÄUSEDECKEL | PUMP LID | COUVERCLE DE POMPE |
| | * 9541789 | PUMPENLAUFRAD | PUMP WHEEL | ROUE DE POMPE |
| | * 9541790 | PUMPENGEHÄUSEDICHTUNG | PACKING PUMP HOUSING | JOINT CORPS DE POMPE |
| | * 9541791 | O-RING 12X2,5 | O-RING 12X2,5 | BAGUE 12X2,5 |
| 2 | 9546093 | GEWINDESCHELLE 70-90 | HOSE WIRE CLAMP 70-90 | COLLIER DE SERRAGE 70-90 |
| 3 | * 9600818 | SCHLAUCHSET | HOSE CONNECTION | CONNEXION TUYAU |
| 4 | 9546094 | GEWINDESCHELLE 80-100 | HOSE WIRE CLAMP 80-100 | COLLIER DE SERRAGE 80-100 |
| 5 | 9513277 | GEWINDESCHELLE 70-90 | HOSE WIRE CLAMP 70-90 | COLLIER DE SERRAGE 70-90 |
| 6 | 9544641 | MAGNETVENTIL G3/4"AXD6, 24V | SOLENOID VALVE G3/4"AXD6, 24V | ÉLECTROVANNE G3/4"AXD6, 24V |
| 7 | * 9543879 | SCHLAUCHVERBINDUNG | HOSE CONNECTION | CONNEXION TUYAU |
| 8 | 9544640 | MAGNETVENTIL FÜR SANFTAN- LAUF G3/4"AXD13, 24V | SOLENOID VALVE FOR SMOOTH START G3/4"AXD13, 24V | VALVE POUR DEMARRAGE PROGRESSIF G3/4"AXD13, 24V |
| 9 | 9600390 | ANSAUGSYSTEM | SUCTION SYSTEM | SYSTEME DE ASPIRATION |
| 10 | * 9601543 | KLAPPE | FLAP | CLAPET |
| 11 | * 9600791 | O-RING | O-RING | BAGUE |
| 12 | 9600744 | GEHÄUSE ABLAUF | DRAIN HOUSING | CORPS DE VIDANGE |
| 13 | 0330022 | SCHRAUBE 4,2X13 | SCREW 4,2X13 | VIS 4,2X13 |
| 14 | * 9612087 | FILTER KPL. | FILTRE CPL. | FILTRE CPL. |
| 15 | 9607788 | ABDECKKAPPE | COVERING CAP | COUVERCLE |
| 16 | 9643218 | ABWEISBLECH | DEFLECTION SHEET | TOLE DE DEFLECTION |

03.20 WASCHSYSTEM

03.20 WASH SYSTEM

03.20 SYSTEME LAVAGE

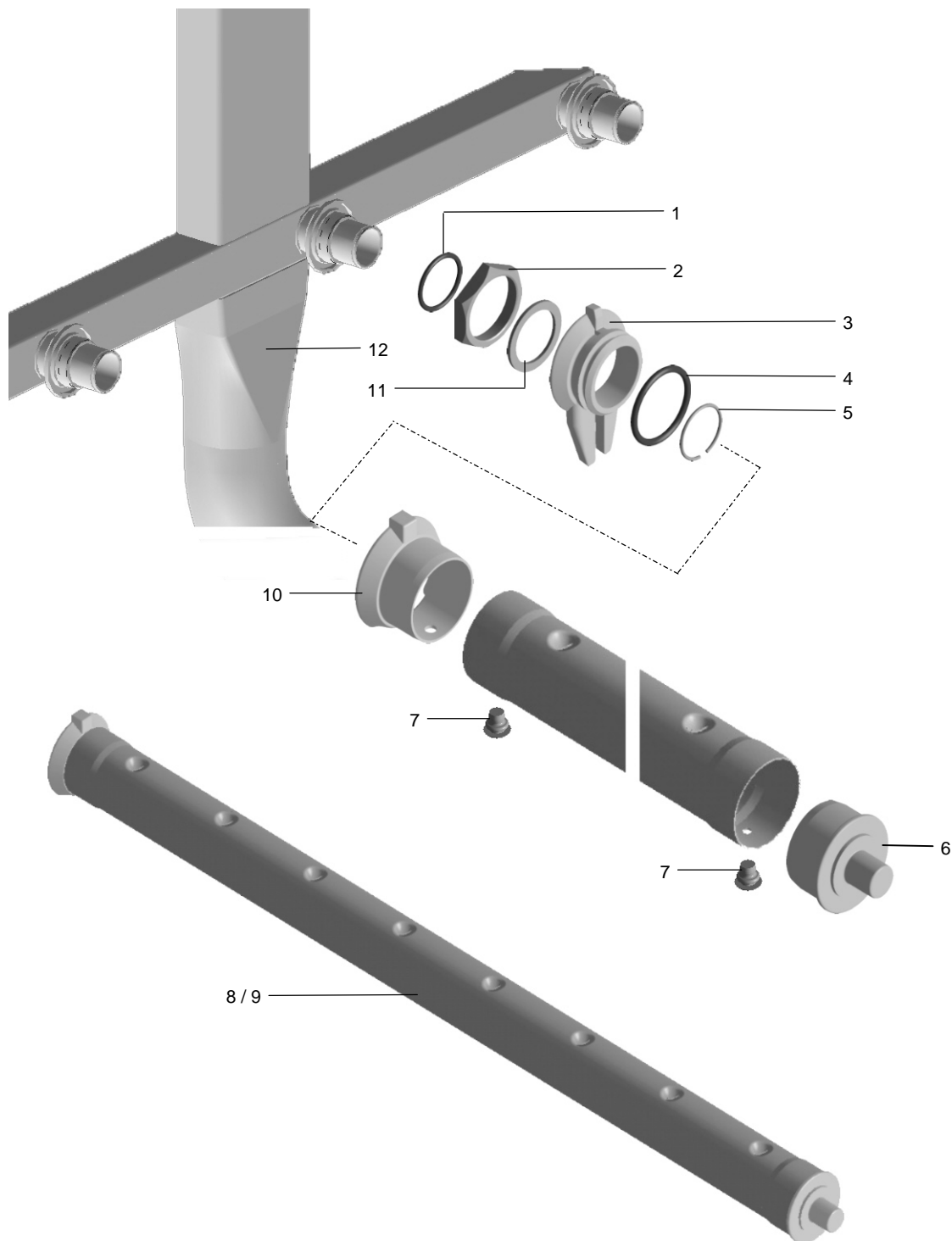
Зип Общепит

vsezip.ru

+7(812)987-08-81



Wn3_20.doc
01.01.2003/FH



03.20 WASCHSYSTEM**03.20 WASH SYSTEM****03.20 SYSTEME LAVAGE**

Зип Общепит

vsezip.ru

+7(812)987-08-81

Wn3_20.doc
01.01.2003/FH

| POS | IDENT. NR. IDENT. NO. | BEZEICHNUNG | DESIGNATION | DESIGNATION |
|-----|--------------------------|----------------------|------------------------|--|
| 1 | * 9601007 | O-RING 38X4 | O-RING 38X4 | BAGUE 38X4 |
| 2 | 9600765 | SKT. MUTTER | HEXAGON NUT | ECROU A 6 PANS |
| 3 | * 9600764 | MITNEHMER | CARRIER | DOIGT |
| 4 | * 0401029 | O-RING 34X3,5 | O-RING 34X3,5 | BAGUE 34X3,5 |
| 5 | * 9600784 | SPRENGRING | SNAP RING | CIRCLIPS |
| 6 | * 9600446 | VERSCHLUßKAPPE | CLOSING CAP | CAPOUCHON |
| 7 | * 9600832 | BLINDNIET | BLIND RIVET | RIVET AVEUGLE |
| 8 | 9629170 | WASCHARM OBEN KPL. | UPPER WASH ARM | BRAS DE LAVAGE SUP. |
| 9 | 9629169 | WASCHARM UNTEN KPL. | LOWER WASH ARM | BRAS DE LAVAGE INF. |
| 10 | * 9600763 | KUPPLUNG | CLUTCH | ACCOUPLLEMENT |
| 11 | 9600453 | SCHEIBE | DISK | DISQUE |
| 12 | 9607274 | STEIGLEITUNG | ASCENDING PIPE | CONDUITE ASCENDANTE |
| | 9600506 | WASCHARMHALTER OBEN | UPPER WASH ARM SUPPORT | SUPPORT P. BRAS DE LAVAGE SUPÉRIEUR |
| | 9600502 | WASCHARMHALTER UNTEN | LOWER WASH ARM SUPPORT | SUPPORT P. BRAS DE LAVAGE INFÉRIEUR |

03.21 NACHSPÜLSYSTEM

03.21 FINAL RINSE SYTEM

03.21 SYSTEME RINCAGE FINAL

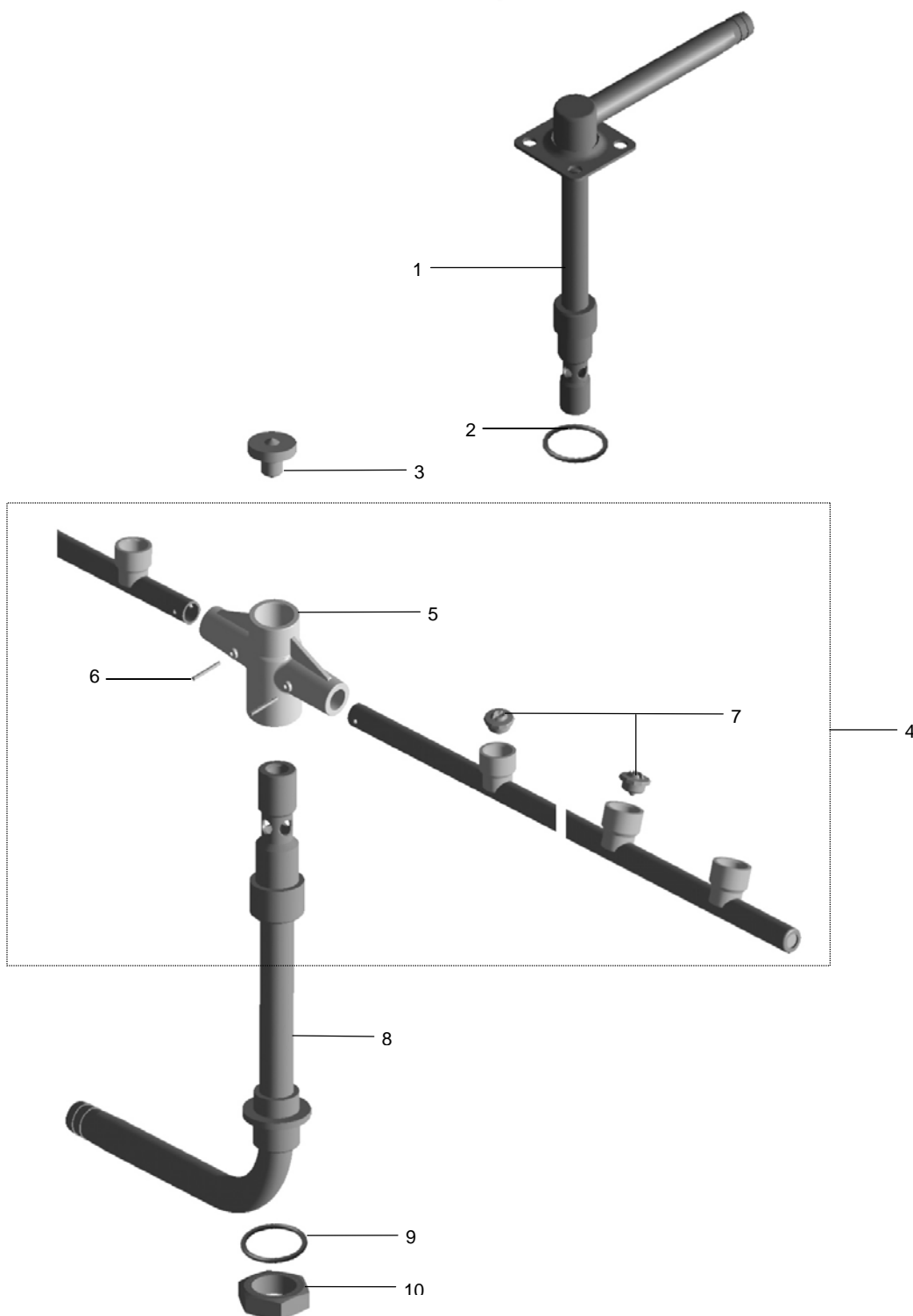
Зип Ощепит

vsezip.ru

+7(812)987-08-81



Wn3_21.doc
01.07.2002/FUS



03.21 NACHSPÜLSYSTEM**03.21 FINAL RINSE SYTEM****03.21 SYSTEME RINCAGE FINAL**

Зип Общепит

vsezip.ru

Wn3_21.doc
01.07.2002/FUS

+7(812)987-08-81

| POS | IDENT. NR. IDENT. NO. | BEZEICHNUNG | DESIGNATION | DESIGNATION |
|-----|--------------------------|------------------------|---------------------------|-------------------------------------|
| 1 | 9600853 | DREHARMNABE OBEN KPL. | UPPER ROTATING ARM CENTRE | MOYEU DE BRAS ROTATIF SUP. |
| 2 | * 0401018 | O-RING 22X3,5 | O-RING 22X3,5 | BAGUE 22X3,5 |
| 3 | * 0310010 | RÄNDELSCHRAUBE | KNURLED SCREW | VIS MOLETEE |
| 4 | 9600672 | NACHSPÜLARM KPL. | FINAL RINSE ARM CPL. | BRAS DE RINCAGE FINAL CPL. |
| 5 | 9600673 | DREHARMLAGER | WASH ARM PIVOT | PIVOT BRAS ROTATIFS |
| 6 | 0354000 | ZYLINDERKERBSTIFT | GROOVED CYLINDRICAL PIN | GOUPILLE CYLINDRIQUE ENTAIL- LEE |
| 7 | * 9517406 | DÜSE KPL. | FINAL RINSE NOZZLE CPL. | GICLEUR A RINCAGE FINAL CPL. |
| 8 | 9600657 | DREHARMNABE UNTEN KPL. | LOWER ROTATING ARM CENTRE | MOYEU DE BRAS ROTATIF INF. |
| 9 | * 0401066 | O-RING 22X3 | O-RING 22X3 | BAGUE 22X3 |
| 10 | 8660046 | SKT. MUTTER ½" | HEXAGONE NUT ½" | ECROU A 6 PANS ½" |

03.22 NACHSPÜLSYSTEM SEITLICH

03.22 FINAL RINSE SYSTEM LATERAL

03.22 SYSTEME DE RINCAGE FINAL LATERAL

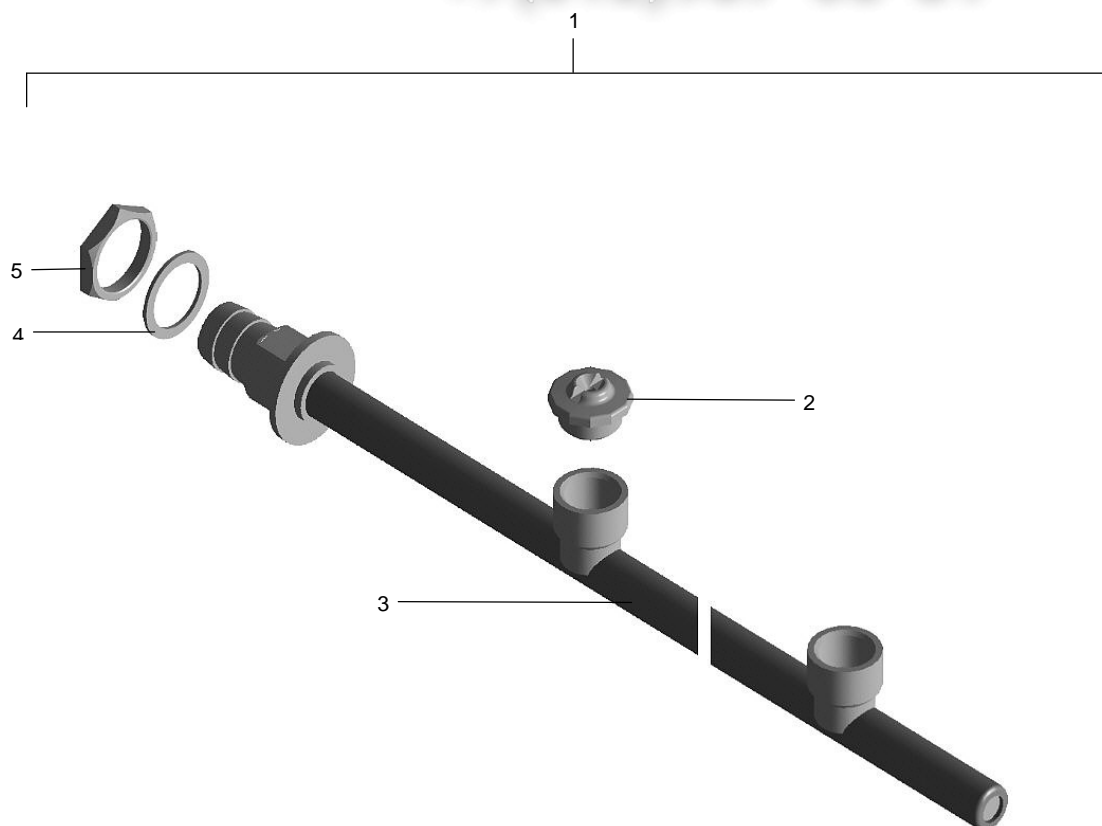
Вип Общепит

vsezip.ru



Wn3_22.doc
01.07.2002/FUS

+7(812)987-08-81



| POS | IDENT. NR. IDENT. NO. | BEZEICHNUNG | DESIGNATION | DESIGNATION |
|-----|--------------------------|-------------------------|----------------------------|----------------------------------|
| 1 | 9600607 | NACHSPÜLSYSTEM SEITLICH | FINAL RINSE SYSTEM LATERAL | SYSTEME DE RINCAGE FINAL LATERAL |
| 2 | * 9517406 | DÜSE KPL. | FINAL RINSE NOZZLE CPL. | GICLEUR A RINCAGE FINAL CPL. |
| 3 | 9600629 | NACHSPÜLLEITUNG | FINAL RINSE PIPE | CONDUITE DE RINCAGE FINAL |
| 4 | * 0408238 | FLACHDICHTUNG | PACKING | JOINT |
| 5 | 0360211 | SKT. MUTTER 3/8" | HEXAGONE NUT 3/8" | ECROU A 6 PANS 3/8" |

04.24 MAGNETVENTIL

04.24 SOLENOID VALVE

04.24 ELECTROVANNE

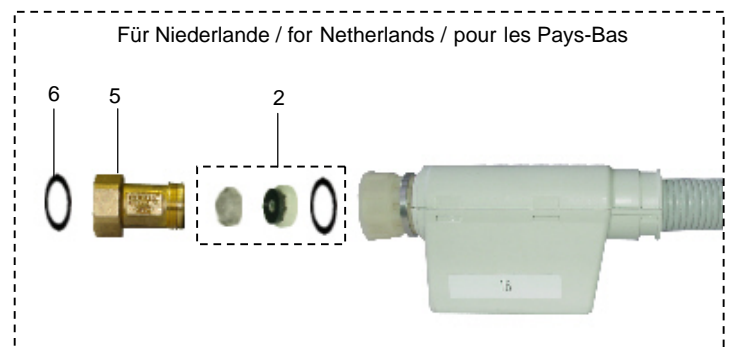
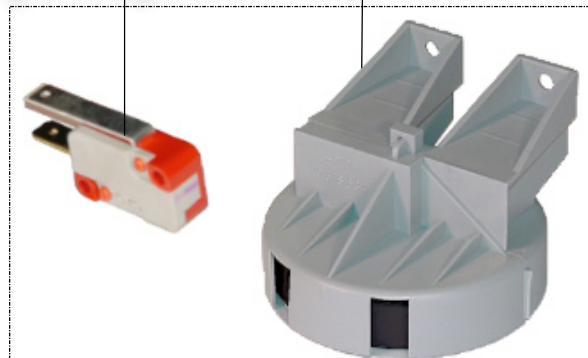
Зип Ощепит

vsezip.ru



Mv4_24.doc
19.05.2004/BP

+7(812)987-08-81



| POS | IDENT. NR. IDENT. NO. | BEZEICHNUNG | DESIGNATION | DESIGNATION |
|-----|--------------------------|---------------------------------------|-------------------------------------|---|
| | | FÜR GROßBRITANNIEN | FOR GREAT BRITAIN | POUR GRANDE-BRETAGNE |
| 1 | * 9604361 | AQUASTOP SYSTEM WRC 24V L = 1800MM | AQUASTOP SYSTEM WRC 24V L=1800MM | SYSTEME DE AQUASTOP WRC 24V L= 1800MM |
| 1 | * 9604286 | AQUASTOP SYSTEM 24V L= 1800MM | AQUASTOP SYSTEM 24V L= 1800MM | SYSTEME DE AQUASTOP 24V L= 1800MM |
| 2 | * 9617744 | DICHTUNGSSATZ MIT MENGEN- REGELER | SEAL SET WITH FLOW REGULA- TOR | JEU DE GARNITURES D'ETAN- CHEITE AVEC REGULATEUR DE DEBIT |
| 3 | * 9622932 | MIKROSCHALTER | SWITCH | INTERUPTEUR |
| 4 | * 9622935 | BODENSCHWIMMERSCHALTER KPL. | GROUND FLOAT SWITCH CPL. | FLOTTEUR AU SOL CPL. |
| | | FÜR NIEDERLANDE | FOR NETHERLANDS | POUR LES PAYS-BAS |
| 5 | 9627098 | RÜCKSCHLAGVENTIL 3/4" | CHECK VALVE 3/4" | CLAPET ANTI-RETOUR 3/4" |
| 6 | 0408225 | DICHTUNG | SEAL | GARNITURE D'ETANCHEITE |

Зип Общепит

vsezip.ru

+7(812)987-08-81

06.07 NIVEAUREGELUNG

06.07 LEVEL CONTROL

06.07 REGULATION DE NIVEAU

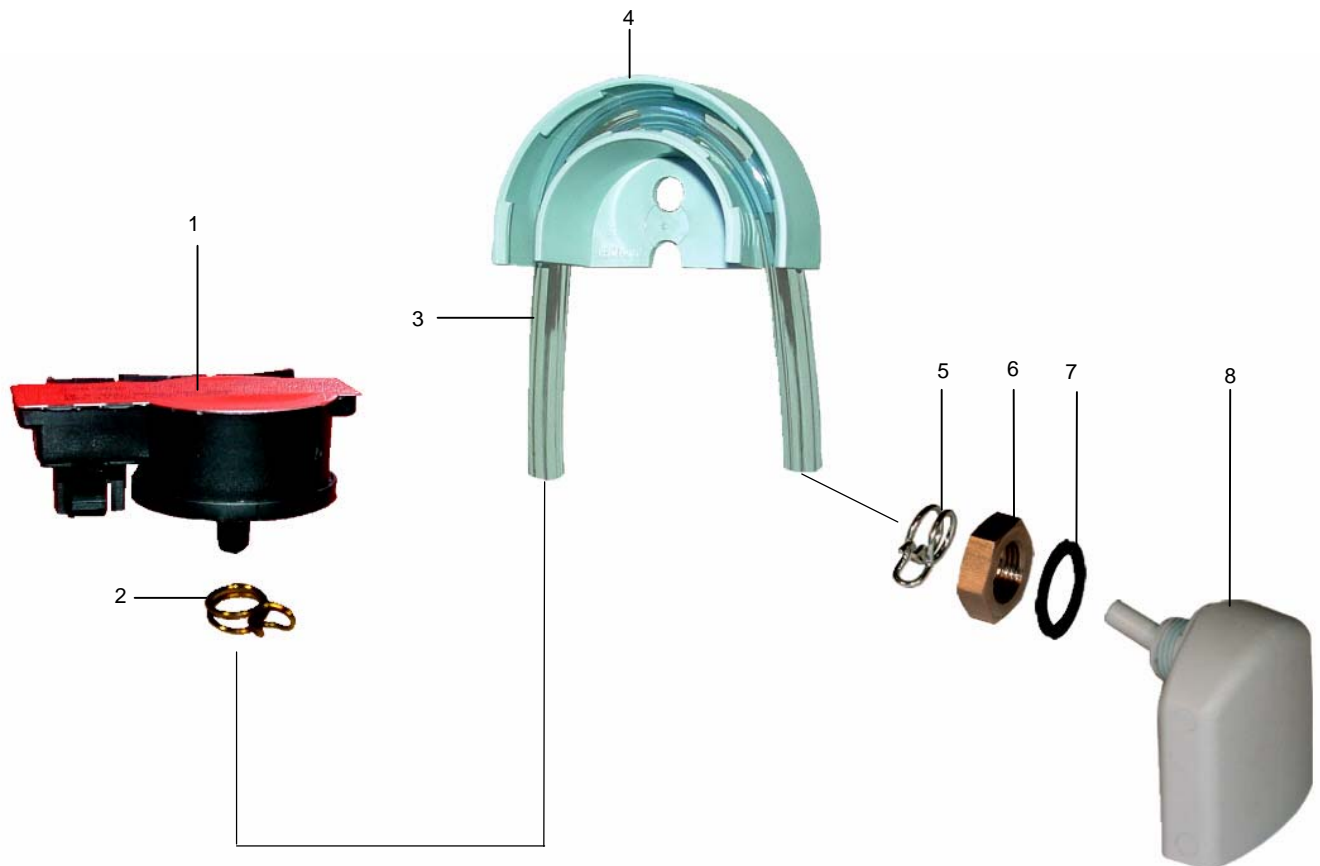
Зип Общепит

vsezip.ru

+7(812)987-08-81



Nvr6_7b.doc
01.07.2002/FUS



| POS | IDENT. NR. IDENT. NO. | BEZEICHNUNG | DESIGNATION | DESIGNATION |
|-----|--------------------------|-----------------------|------------------------|---------------------------|
| 1 | * 9537961 | DRUCKSENSOR | LEVEL SWITCH | INTERRUPTEUR DE NIVEAU |
| 2 | * 9500044 | SCHLAUCHKLEMME SILBER | HOSE WIRE CLAMP SILVER | COLLIER DE SERRAGE ARGENT |
| 3 | * 0260006 | SCHLAUCH KLARSICHT Ø5 | HOSE TRANSPARENT Ø5 | TUYAU TRANSPARENT Ø5 |
| 4 | 9601265 | SCHLAUCHHALTER | HOSE BRACKET | SUPPORT DE TUYAU |
| 5 | * 9500045 | SCHLAUCHKLEMME GELB | HOSE WIRE CLAMP YELLOW | COLLIER DE SERRAGE JAUNE |
| 6 | 9515957 | MUTTER 3/8" | NUT 3/8" | ECROU 3/8" |
| 7 | * 9515964 | DICHTUNG | PACKING | JOINT |
| 8 | * 9515955 | LUFTFALLE | AIR TRAP | CHAMBRE DE COMPRESSION |

08.47 EINBAUBOILER

08.47 INCORPORATED BOILER

08.47 SURCHAUFFEUR INCORPORE

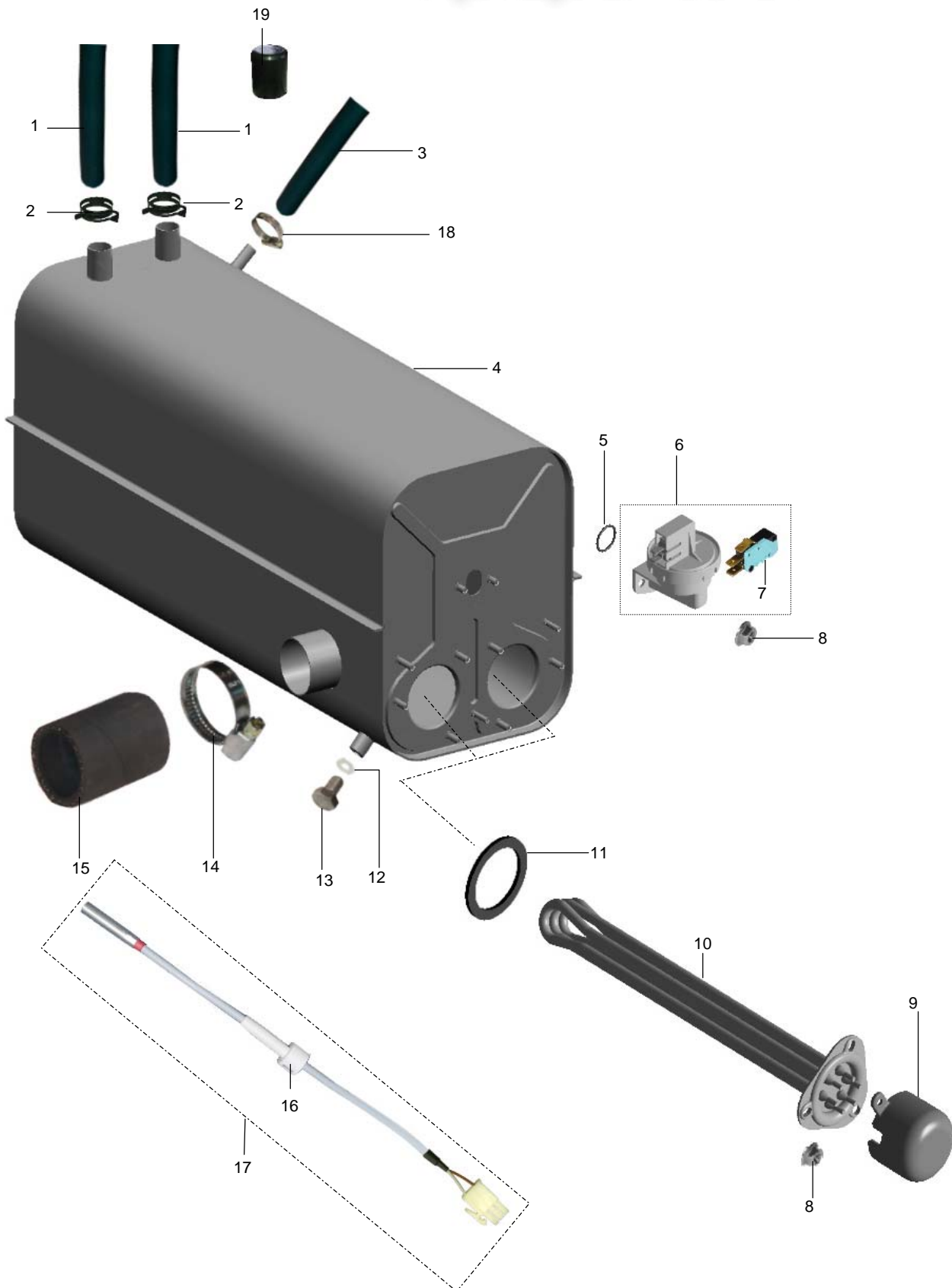
Зип Ощепит

vsezip.ru

+7(812)987-08-81



Bh8_47.doc
07.06.2004/BP



08.47 EINBAUBOILER**08.47 INCORPORATED BOILER****08.47 SURCHAUFFEUR INCORPORE**

Зип Общепит

vsezip.ru

Bh8_47.doc
07.06.2004/BP

+7(812)987-08-81

| POS | IDENT. NR. IDENT. NO. | BEZEICHNUNG | DESIGNATION | DESIGNATION |
|-----|--------------------------|---|--|--|
| 1 | 9608600 | SCHLAUCH ½" | HOSE CPL ½" | TUYAU CPL ½" |
| 2 | 9607418 | FEDERBANDSCHELLE Ø21 | HOSE CLAMP TAPE Ø21 | RUBAN COLLIER DE SERRAGE Ø21 |
| 3 | 9608607 | SCHLAUCH 3/8" | HOSE CPL 3/8" | TUYAU CPL 3/8" |
| 4 | 9604799 | BOILER | BOILER | SURCHAUFFEUR |
| 5 | * 0401014 | O-RING 18X2 | O-RING 18X2 | BAGUE 18X2 |
| 6 | * 9622898 | NIVEAUSCHALTER KPL | LEVEL SWITCH CPL | INTERRUPTEUR DE NIVEAU CPL |
| 7 | * 0122103 | MIKROSCHALTER | SWITCH | INTERRUPTEUR |
| 8 | 0335008 | MUTTER M5 | NUT M5 | ECROU M5 |
| 9 | 0620312 | ABDECKKAPPE | CLOSING CAP | CAPOUCHON |
| 10 | * 9519588 | HEIZKÖRPER 6,0 KW MIT THER- MOSICHERUNG | HEATING ELEMENT 6,0 KW WITH THERMAL PROTECTION | RESISTANCE 6,0 KW AVEC PRO- TECTION THERMIQUE |
| | * 9519590 | HEIZKÖRPER 7,5 KW MIT THER- MOSICHERUNG | HEATING ELEMENT 7,5 KW WITH THERMAL PROTECTION | RESISTANCE 7,5 KW AVEC PRO- TECTION THERMIQUE |
| | * 9519591 | HEIZKÖRPER 9 KW MIT THER- MOSICHERUNG | HEATING ELEMENT 9 KW WITH THERMAL PROTECTION | RESISTANCE 9 KW AVEC PRO- TECTION THERMIQUE |
| 11 | * 0101176 | HEIZKÖRPERDICHTUNG | HEATING ELEMENT PACKING | JOINT DE RESISTANCE |
| 12 | * 0408001 | DICHTUNG 8X17X1,5 | PACKING 8X17X1,5 | JOINT 8X17X1,5 |
| 13 | 0302006 | SCHRAUBE M8X15 | SCREW M8X15 | VIS M8X15 |
| 14 | 0233046 | SCHLAUCHKLEMME 32-50 | HOSE WIRE CLAMP 32-50 | COLLIER DE SERRAGE 32-50 |
| 15 | 9600820 | SCHLAUCHVERBINDUNG | HOSE | TUYAU |
| | | GÜLTIG BIS 2005-03 | VALID UNTIL 2005-03 | VALABLE JUSQU'AU 2005-03 |
| 16 | 9639301 | KABELSCHELLE | CABLE CLIP | COLLIER DE CABLE |
| 17 | * 9642324 | TEMPERATURFÜHLER MONTAGEBAUGRUPPE | TEMPERATURE PROBE ASSEMBLY | SONDE DE TEMPERATURE JEU DE MONTAGE |
| | | GÜLTIG AB 2005-04 | VALID FROM 2005-04 | VALABLE A PARTIR DU 2005-04 |
| 16 | 9639301 | KABELSCHELLE | CABLE CLIP | COLLIER DE CABLE |
| 17 | * 9640339 | TEMPERATURFÜHLER MONTAGEBAUGRUPPE. | TEMPERATURE PROBE ASSEMBLY | SONDE DE TEMPERATURE JEU DE MONTAGE |
| 18 | 0233035 | SCHLAUCHKLEMME 12/20 | HOSE WIRE CLAMP 12/20 | COLLIER DE SERRAGE 12/20 |
| 19 | 9609357 | VERSCHLUSSKAPPE NUR FÜR DV 270.2, FV 130.2 FV 250.2 | CLOSING CAP ONLY FOR DV 270.2, FV 130.2 FV 250.2 | CAPOUCHON SEULEMENT PUR DV 270.2, FV 130.2, FV 250.2 |

08.61 EINBAUBOILER - DAMPFSYSTEM
08.61 INCORPORATED BOILER - STEAM SYSTEM
08.61 SURCHAUFFEUR INCORPORE - SYSTEME DE VAPEUR

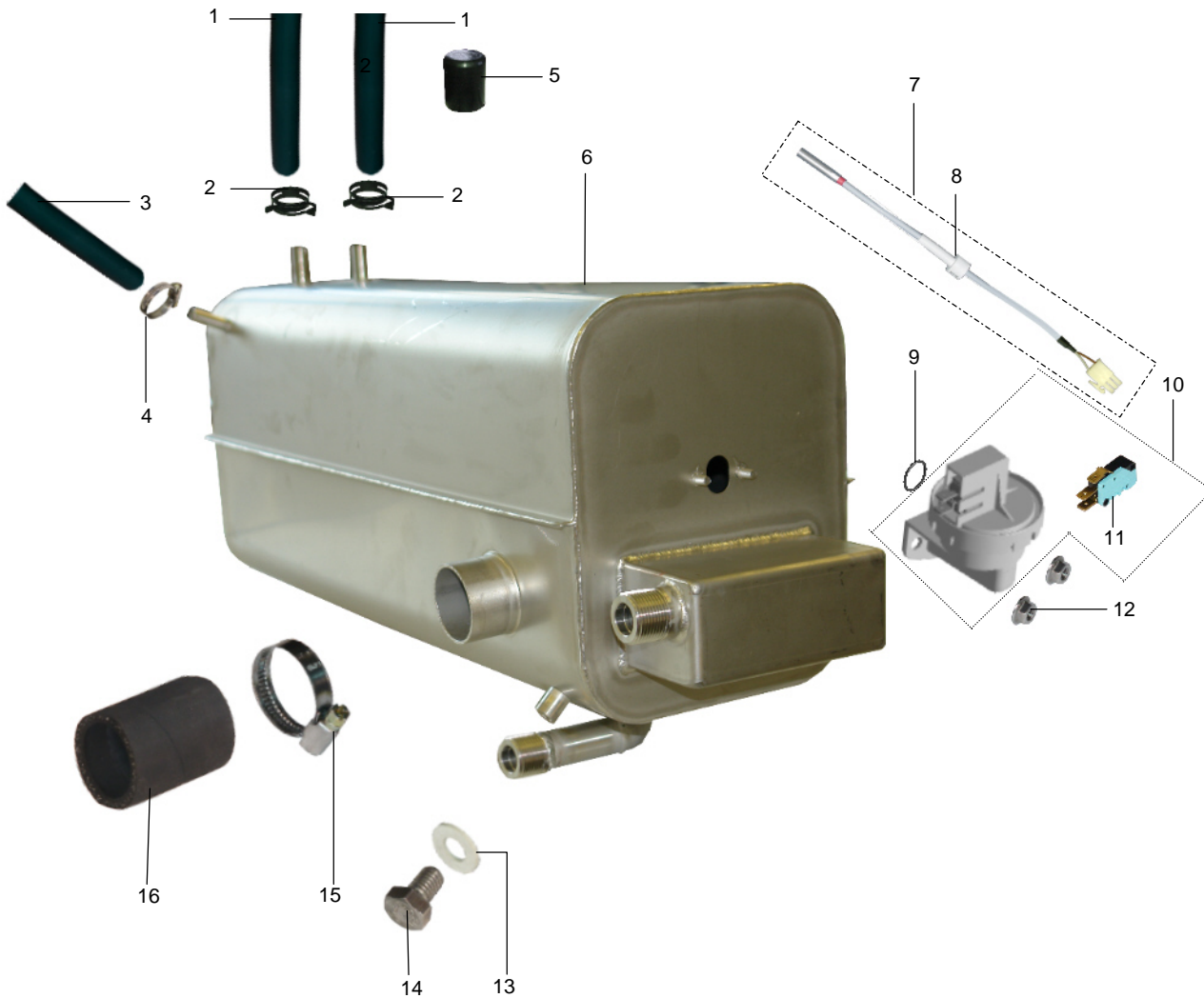
Всепит

vsezip.ru



Bh8_61.doc
2008-03-11/BP

+7(812)987-08-81



08.61 EINBAUBOILER - DAMPFSYSTEM
08.61 INCORPORATED BOILER - STEAM SYSTEM
08.61 SURCHAUFFEUR INCORPORE - SYSTEME DE VAPEUR



Bh8_61.doc
2008-03-11/BP

+7(812)987-08-81

| POS | IDENT. NR. IDENT. NO. | BEZEICHNUNG | DESIGNATION | DESIGNATION |
|-----|--------------------------|---|--|--|
| 1 | 9608600 | SCHLAUCH 1/2" | HOSE CPL 1/2" | TUYAU CPL 1/2" |
| 2 | 9607418 | FEDERBANDSCHELLE Ø21 | HOSE CLAMP TAPE Ø21 | RUBAN COLLIER DE SERRAGE Ø21 |
| 3 | 9608607 | SCHLAUCH 3/8" | HOSE CPL 3/8" | TUYAU CPL 3/8" |
| 4 | 0233035 | SCHLAUCHKLEMME 12/20 | HOSE WIRE CLAMP 12/20 | COLLIER DE SERRAGE 12/20 |
| 5 | 9609357 | VERSCHLUSSKAPPE NUR FÜR DV 270.2, FV 130.2 FV 250.2 | CLOSING CAP ONLY FOR DV 270.2, FV 130.2 FV 250.2 | CAPOUCHON SEULEMENT PUR DV 270.2, FV 130.2, FV 250.2 |
| 6 | 9644275 | BOILER | BOILER | SURCHAUFFEUR |
| 7 | * 9640339 | TEMPERATURFÜHLER MONTAGEBAUGRUPPE. | TEMPERATURE PROBE ASSEMBLY | SONDE DE TEMPERATURE JEU DE MONTAGE |
| 8 | 9639301 | KABELSCHELLE | CABLE CLIP | COLLIER DE CABLE |
| 9 | * 0401014 | O-RING 18X2 | O-RING 18X2 | BAGUE 18X2 |
| 10 | * 9622898 | NIVEAUSCHALTER KPL | LEVEL SWITCH CPL | INTERRUPTEUR DE NIVEAU CPL |
| 11 | * 0122103 | MIKROSCHALTER | SWITCH | INTERRUPTEUR |
| 12 | 0335008 | MUTTER M5 | NUT M5 | ECROU M5 |
| 13 | * 0408001 | DICHTUNG 8X17X1,5 | PACKING 8X17X1,5 | JOINT 8X17X1,5 |
| 14 | 0302006 | SCHRAUBE M8X15 | SCREW M8X15 | VIS M8X15 |
| 15 | 0233046 | SCHLAUCHKLEMME 32-50 | HOSE WIRE CLAMP 32-50 | COLLIER DE SERRAGE 32-50 |
| 16 | 9600820 | SCHLAUCHVERBINDUNG | HOSE | TUYAU |
| | | GÜLTIG AB 2005-04 | VALID FROM 2005-04 | VALABLE A PARTIR DU 2005-04 |
| 7 | 9639301 | KABELSCHELLE | CABLE CLIP | COLLIER DE CABLE |
| 8 | * 9640339 | TEMPERATURFÜHLER MONTAGEBAUGRUPPE. | TEMPERATURE PROBE ASSEMBLY | SONDE DE TEMPERATURE JEU DE MONTAGE |

09.19 TANKHEIZUNG

09.19 TANK HEATING

09.19 CHAUFFAGE DE BAC

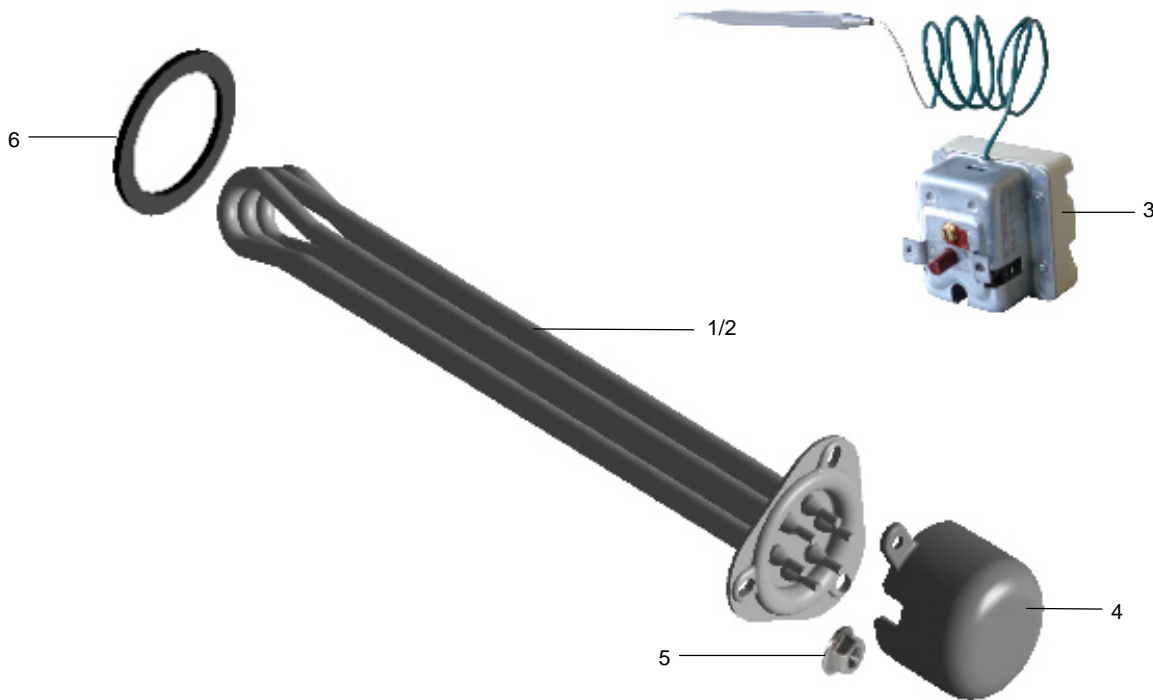
Зип Общепит

vsezip.ru

+7(812)987-08-81



Th9_19.doc
01.06.2003/BP



| POS | IDENT. NR. IDENT. NO. | BEZEICHNUNG | DESIGNATION | DESIGNATION |
|-----|--------------------------|---|---|---|
| 1 | * 9519587 | HEIZKÖRPER 4,5 KW MIT THERMOSICHERUNG | HEATING ELEMENT 4,5 KW WITH THERMAL PROTECTION | RESISTANCE 4,5 KW AVEC PROTECTION THERMIQUE |
| 1 | * 9519588 | HEIZKÖRPER 6 KW MIT THERMOSICHERUNG | HEATING ELEMENT 6 KW WITH THERMAL PROTECTION | RESISTANCE 6 KW AVEC PROTECTION THERMIQUE |
| | | GÜLTIG AB 2007-05 | VALID FROM 2007-05 | VALABLE A PARTIR DU 2007-05 |
| | | HEIZKÖRPER (9637189) NUR IN VERBINDUNG MIT TEMPERATURBEGRENZER (9502526) EINSETZEN! | HEATING ELEMENT (9637189) ONLY TO BE USED IN CONNECTION WITH TEMPERATURE LIMITER (9502526)! | ELEMENT DE CHAUFFAGE (9637189) A UTILISER UNIQUEMENT AVEC LE LIMITEUR DE TEMPERATURE (9502526)! |
| 2 | * 9637189 | HEIZKÖRPER 4,5 KW | HEATING ELEMENT 4,5 KW | RESISTANCE 4,5 KW |
| 2 | * 9637188 | HEIZKÖRPER 6 KW | HEATING ELEMENT 6 KW | RESISTANCE 6 KW |
| 2 | * 9644455 | HEIZKÖRPER 7,5 KW | HEATING ELEMENT 7,5 KW | RESISTANCE 7,5 KW |
| 3 | 9502526 | TEMPERATURBEGRENZER | TEMPERATURE LIMITER | LIMITEUR DE TEMPERATURE |
| 4 | 0620312 | ABDECKKAPPE | CLOSING CAP | CAPOUCHON |
| 5 | 0335008 | MUTTER M5 | NUT M5 | ECROU M5 |
| 6 | * 0101176 | HEIZKÖRPERDICHTUNG | HEATING ELEMENT PACKING | JOINT DE RESISTANCE |

10.14 DOSIERGERÄTE

10.14 DOSING UNITS

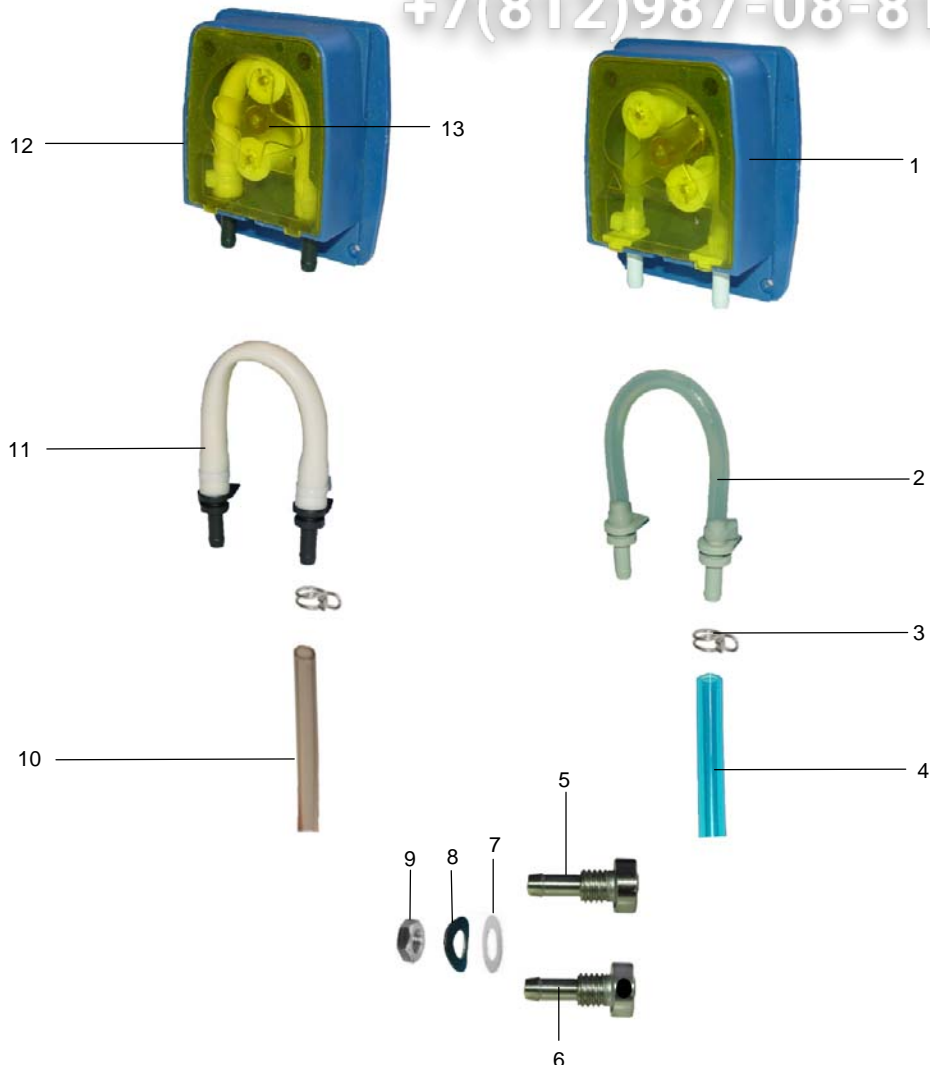
10.14 DOSEURS

Зип Общепит

vsezip.ru



+7(812)987-08-81



| POS | IDENT. NR. IDENT. NO. | BEZEICHNUNG | DESIGNATION | DESIGNATION |
|-----|--------------------------|--------------------------|----------------------------|-----------------------------------|
| 1 | * 9544293 | KLARSPÜLDOSIERPUMPE KPL. | RINSE AID DOSING PUMP CPL. | POMPE DE DOSAGE TENSIO ACTIF CPL. |
| 2 | V 9544088 | SCHLAUCH KLARSPÜLER KPL. | HOSE RINSE AID CPL. | TUYAU PRODUIT TENSIO ACTIF CPL. |
| 3 | * 9500045 | SCHLAUCHKLEMME GELB | HOSE WIRE CLAMP YELLOW | COLLIER DE SERRAGE JAUNE |
| 4 | V 9538712 | SCHLAUCH BLAU Ø6 | HOSE BLUE Ø6 | TUYAU BLEU Ø6 |
| 5 | 8000013 | SCHLAUCHANSCHLUß | HOSE CONNECTION | CONNEXION DE TUYAU FLEXIBLE |
| 6 | 9541142 | SCHLAUCHANSCHLUß | HOSE CONNECTION | CONNEXION DE TUYAU FLEXIBLE |
| 7 | * 9603787 | FLACHDICHTUNG 10X16X2 | FLAT PACKING 10X16X2 | GARNITURE PLATE 10X16X2 |
| 8 | * 9603790 | FEDERSCHEIBE M10 | SPRING WASHER M10 | RONDELLE ÉLASTIQUE M10 |
| 9 | 0335019 | SECHSKANTMUTTER | HEXAGON NUT | ECROU A SIX PANS |
| 10 | V 0260007 | SCHLAUCH KLARSICHT Ø6 | HOSE TRANSPARENT Ø6 | TUYAU TRANSPARENT Ø6 |
| 11 | V 9511675 | SCHLAUCH REINIGER KPL | HOSE DETERGENT CPL. | TUYAU DETERGENT CPL. |
| 12 | * 9544292 | REINIGERDOSIERPUMPE KPL | DETERGENT DOSING PUMP CPL. | POMPE DE DOSAGE DETERGENT CPL. |
| 13 | * 9533450 | ROTOR | ROTOR | ROTOR |

11.70 ELEKTRONIKSTEUERUNG

11.70 ELECTRONIC CONTROL

11.70 COMMAND DE ELECTRONIQUE

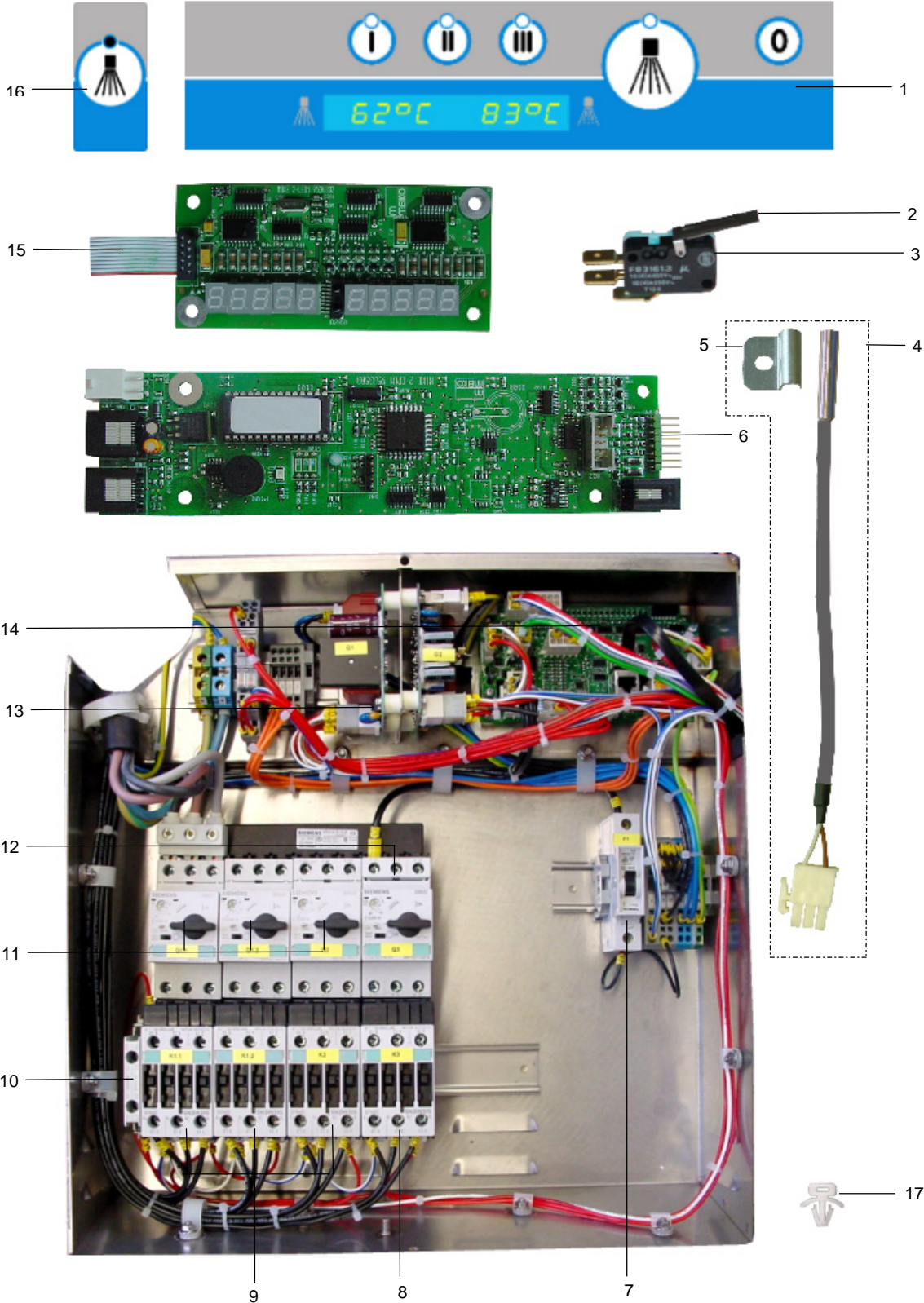
Зип Общепит

vsezip.ru

+7(812)987-08-81



EL11_70.doc
2005-05-25/BP



11.70 ELEKTRONIKSTEUERUNG**11.70 ELECTRONIC CONTROL****11.70 COMMAND DE ELECTRONIQUE**

3ип Общепит

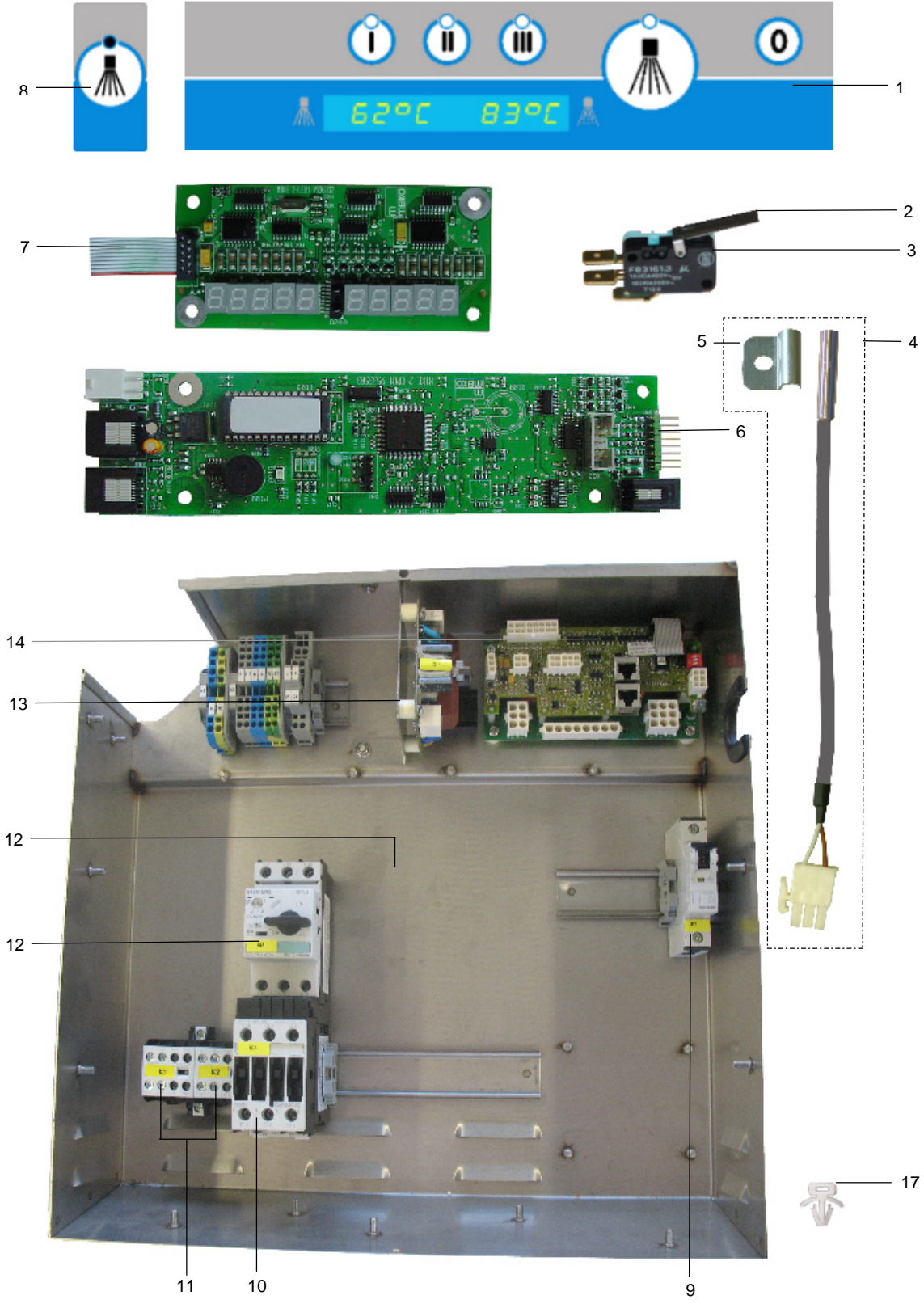
vsezip.ru

+7(812)987-08-81

EL11_70.doc
2005-05-25/BP

| POS | IDENT. NR. IDENT. NO. | BEZEICHNUNG | DESIGNATION | DESIGNATION |
|-----|--------------------------|--|--|--|
| 1 | * 9537365 | FOLIENASTATUR FV130.2 | SENSOR TOUCH PANEL | CLAVIER SENSITIF |
| 2 | * 0122106 | HEBEL FÜR MIKROSCHALTER | LEVER FOR SENSITIVE SWITCH | LEVIER POUR MICRORUPTEUR |
| 3 | * 0122103 | MIKROSCHALTER | SWITCH | INTERRUPTEUR |
| 4 | * 9640338 | TEMPERATURFÜHLER TANK | TEMPERATURE PROBE TANK | SONDE DE TEMPERATURE BAC |
| 5 | 9639363 | HALTER | SUPPORT | APPUI |
| 6 | * 9541525 | MONTAGESATZ CPU | ASSEMBLY KIT CPU | KIT D'INSTALLATION UNITE CENTRALE |
| 7 | * 9540605 | SICHERUNGSAUTOMAT B10 | FUSE BLOCK | COUPE CIRCUIT AUTOMATIQUE |
| 8 | * 9544770 | SCHÜTZ | CONTACTOR | CONTACTEUR |
| 9 | * 9542897 | SCHÜTZ | CONTACTOR | CONTACTEUR |
| 10 | * 9550241 | HILFSSCHALTER SCHÜTZ | EMERGENCY CONTACTOR | CONTACTEUR DE SECOURS |
| 11 | * 9540600 | MOTORSCHUTZSCHALTER 3RV1021-4AA10 S0 | MOTOR SAFETY SWITCH 3RV1021-4AA10 S0 | DISJONCTEUR-PROTECTEUR 3RV1021-4AA10 S0 |
| 12 | * 9540602 | MOTORSCHUTZSCHALTER 3RV1021-1GA10 4,5-6,3A S0 | MOTOR SAFETY SWITCH 3RV1021-1GA10 4,5-6,3A S0 | DISJONCTEUR-PROTECTEUR 3RV1021-1GA10 4,5-6,3A S0 |
| 13 | * 9533502 | NETZTEIL | POWER PACK | BLOC D'ALIMENTATION |
| | * 0145047 | FEINSICHERUNG 2A | FINE WIRE FUSE 2A | FUSIBLE FIN 2A |
| 14 | * 9617235 | E/A PLATINE | E/A CIRCUIT BOARD | E/A PLATINE |
| | * 9611761 | FEINSICHERUNG 16A | FINE WIRE FUSE 16A | FUSIBLE FIN 16A |
| 15 | * 9542049 | MONTAGESATZ ANZEIGENPLATINE | ASSEMBLY KIT SCALE CIRCUIT BOARD | KIT D'INSTALLATION UNITE CENTRALE PLATINE D'AFFICHAGE |
| 16 | * 9537572 | FOLIENASTATUR STARTTASTE | SENSOR TOUCH PANEL STARTBUTTON | CLAVIER A EFFLEUREMENT TOUCHÉ DE DEMARRAGE |
| | * 9539901 | VERBINDUNGSKABEL FÜR FOLIENASTATUR | CONNECTION CABLE FOR SENSOR TOUCH PANEL | CABLE CONNEXION POUR CLAVIER SENSITIF |
| | 9604262 | E-PROM | E-PROM | E-PROM |
| | | E-E-PROM MASCHINENBEZOGEN BESTELLEN (SERIENNUMMER) | E-E-PROM TO BE ORDERED ACCORDING TO EXECUTION OF MACHINE (SERIAL NUMBER) | LE E-E-PROM DOIT ETRE COMMANDE SELON L'EXECUTION DE LA MACHINE (NUMERO DE SERIE) |
| | * 9635757 | VERBINDUNGSKABEL FÜR PLATINE | CONNECTION CABLE FOR CIRCUIT BOARD | CABLE CONNEXION POUR PLATINE |
| | * 9545152 | FLACHBANDKABEL | RIBBON CABLE | CABLE A RUBAN |
| 17 | 9607101 | KABELBINDERHALTER | CABLE TIE SUPPORT | SUPPOR D'ATTACHE-CABLE |

11.82 ELEKTRONIKSTEUERUNG - DAMPFSYSTEM
11.82 ELECTRONIC CONTROL - STEAM SYSTEM
11.82 COMMAND DE ELECTRONIQUE - SYSTEME DE VAPEUR
+7(812)987-08-81



11.82 ELEKTRONIKSTEUERUNG - DAMP SYSTEM

11.82 ELECTRONIC CONTROL - STEAM SYSTEM

11.82 COMMAND DE ELECTRONIQUE - SYSTEME DE VAPEUR



EL11_70.doc
2005-05-25/BP

+7(812)987-08-81

| POS | IDENT. NR. IDENT. NO. | BEZEICHNUNG | DESIGNATION | DESIGNATION |
|-----|--------------------------|---|---|---|
| 1 | * 9537365 | FOLIENASTATUR FV130.2 | SENSOR TOUCH PANEL | CLAVIER SENSITIF |
| 2 | * 0122106 | HEBEL FÜR MIKROSCHALTER | LEVER FOR SENSITIVE SWITCH | LEVIER POUR MICRORUPTEUR |
| 3 | * 0122103 | MIKROSCHALTER | SWITCH | INTERRUPTEUR |
| 4 | * 9640338 | TEMPERATURFÜHLER TANK | TEMPERATURE PROBE TANK | SONDE DE TEMPERATURE BAC |
| 5 | 9639363 | HALTER | SUPPORT | APPUI |
| 6 | * 9541525 | MONTAGESATZ CPU | ASSEMBLY KIT CPU | KIT D'INSTALLATION UNITE CENTRALE |
| 7 | * 9542049 | MONTAGESATZ ANZEIGENPLATINE | ASSEMBLY KIT SCALE CIRCUIT BOARD | KIT D'INSTALLATION UNITE CENTRALE PLATINE D'AFFICHAGE |
| 8 | * 9537572 | FOLIENASTATUR STARTTASTE | SENSOR TOUCH PANEL STARTBUTTON | CLAVIER A EFFLEUREMENT TOUCHÉ DE DEMARRAGE |
| | * 9539901 | VERBINDUNGSKABEL FÜR FOLIENASTATUR | CONNECTION CABLE FOR SENSOR TOUCH PANEL | CABLE CONNEXION POUR CLAVIER SENSITIF |
| 9 | * 9540605 | SICHERUNGSAUTOMAT B10 | FUSE BLOCK | COUPE CIRCUIT AUTOMATIQUE |
| 10 | * 9544770 | SCHÜTZ | CONTACTOR | CONTACTEUR |
| 11 | * 9543079 | SCHÜTZ | CONTACTOR | CONTACTEUR |
| 12 | * 9540602 | MOTORSCHUTZSCHALTER 3RV1021-1GA10 4,5-6,3A S0 | MOTOR SAFETY SWITCH 3RV1021-1GA10 4,5-6,3A S0 | DISJONCTEUR-PROTECTEUR 3RV1021-1GA10 4,5-6,3A S0 |
| 13 | * 9533502 | NETZTEIL | POWER PACK | BLOC D'ALIMENTATION |
| | * 0145047 | FEINSICHERUNG 2A | FINE WIRE FUSE 2A | FUSIBLE FIN 2A |
| 14 | * 9617235 | E/A PLATINE | E/A CIRCUIT BOARD | E/A PLATINE |
| | * 9611761 | FEINSICHERUNG 16A | FINE WIRE FUSE 16A | FUSIBLE FIN 16A |
| | 9604262 | EPROM | EPROM | EPROM |
| | | E-EPROM MASCHINENBEZOGEN BESTELLEN (SERIENNUMMER) | E-EPROM TO BE ORDERED ACCORDING TO EXECUTION OF MACHINE (SERIAL NUMBER) | LE E-EPROM DOIT ETRE COMMANDE SELON L'EXECUTION DE LA MACHINE (NUMERO DE SERIE) |
| | * 9635757 | VERBINDUNGSKABEL FÜR PLATINE | CONNECTION CABLE FOR CIRCUIT BOARD | CABLE CONNEXION POUR PLATINE |
| | * 9545152 | FLACHBANDKABEL | RIBBON CABLE | CABLE A RUBAN |
| 17 | 9607101 | KABELBINDERHALTER | CABLE TIE SUPPORT | SUPPOR D'ATTACHE-CABLE |

13.24 BAUGRUPPEN / EINZELTEILE Зип Общепит

13.24 COMPONENT BLOCKS / PARTS

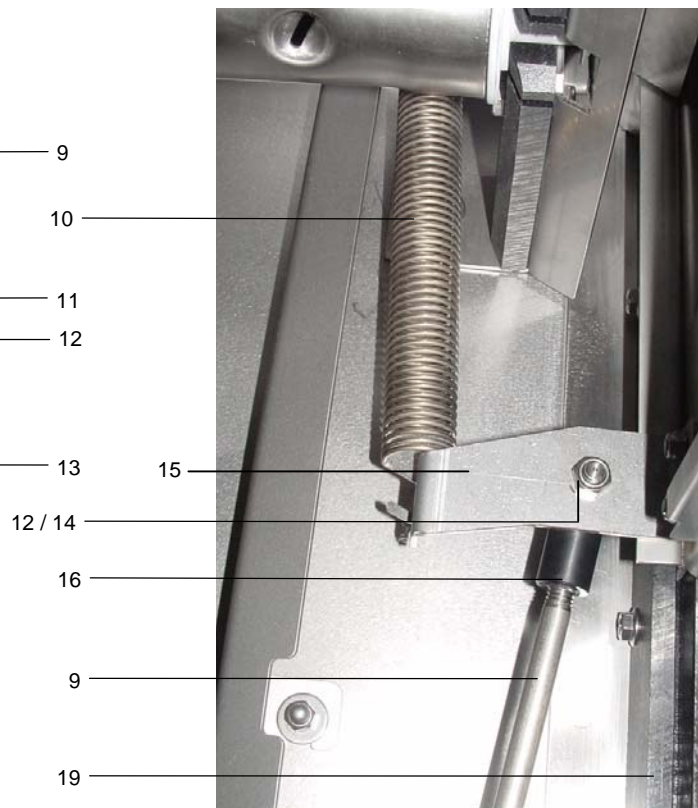
13.24 BLOCS / PIÈCES DETACHÉES

vsezip.ru



Be13_24.doc
01.07.2002/FUS

+7(812)987-08-81



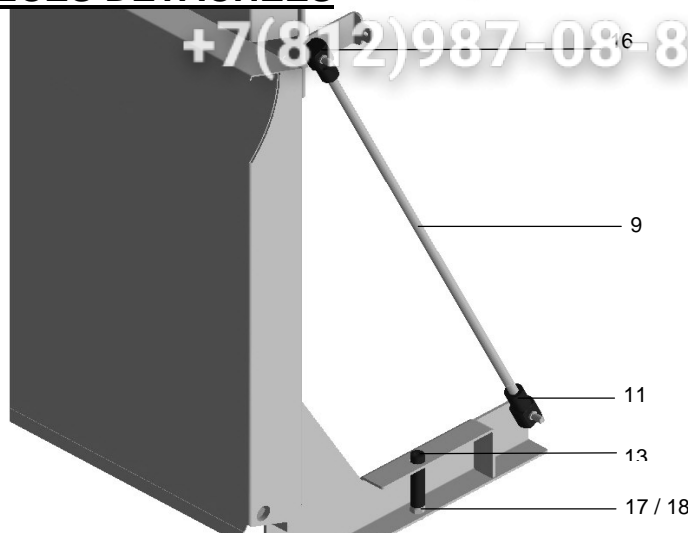
13.24 BAUGRUPPEN / EINZELTEILE

13.24 COMPONENT BLOCKS / PARTS

13.24 BLOCS / PIECES DETACHEES



Be13_24.doc
01.07.2002/FUS



| POS | IDENT. NR. IDENT. NO. | BEZEICHNUNG | DESIGNATION | DESIGNATION |
|-----|--------------------------|----------------------------------|------------------------------|---|
| 1 | 9600945 | ABDECKUNG | COVER | RECOUVREMENT |
| 2 | 9600378 | SEITENWAND LINKS | SIDE CLADDING, LEFT | REVETEMENT LATERAL GAUCHE |
| 3 | 9600770 | SCHIEBETÜR KPL. | SLIDING DOOR CPL. | PORTE COULISSANTE CPL. |
| 4 | 9600524 | RÜCKWAND | CLADDING, BACK | REVETEMENT ARRIERE |
| 5 | 9600370 | KLAPPTÜR KPL. | FLAP DOOR CPL. | PORTE RABATTABLE CPL |
| 6 | 9600382 | SEITENWAND RECHTS | SIDE CLADDING, RIGHT | REVETEMENT LATERAL DROIT |
| 7 | 9600349 | FRONTBLECH | FRONT SHEET | TOLE FRONTALE |
| 8 | * 9533829 | TISCHSTOLLEN KPL. | TABLE FEET | PIEDS DE TABLE |
| | 9600597 | SIEB WASCHTANK | COVERING SIEVE CPL. | RECOUVREMENT DE TAMIS CPL. |
| 9 | 9600526 | DRUCKSTANGE | PRESSURE ROD | BARRE DE PRESSION |
| 10 | V 9542938 | ZUGFEDER | TENSION SPRING | RESSORT DE TENSION |
| | 9600956 | SCHUTZBÜGEL FEDER LINKS | SAFETY BAR FOR SPRING, LEFT | BARRE DE PROTECTION P. RES-SORT, GAUCHE |
| | 9600997 | SCHUTZBÜGEL FEDER RECHTS | SAFETY BAR FOR SPRING, RIGHT | BARRE DE PROTECTION P. RES-SORT, DROITE |
| | 9515084 | FEDERAUFHÄNGUNG OBEN | UPPER SPRING SUSPENDER | SUSPENDEUR DE RESSORT SUP. |
| 11 | * 8002833 | LAGERAUGE M8 | BEARING PIECE | PIECE DE PALIER |
| 12 | 0337005 | SKT. MUTTER M8 | HEXAGON NUT M8 | ECROU A SIX PANS M8 |
| 13 | 9600729 | SCHLAUCH | TUBE | TUYAU |
| 14 | 8002831 | LAGERBOLZEN | BEARING BOLT | BOULON DE PALIER |
| 15 | 9601200 | WINKEL LINKS | ANGLE LEFT | ANGLE BAUCHE |
| | 9601201 | WINKEL RECHTS | ANGLE RIGHT | ANGLE DROITE |
| 16 | * 8002834 | LAGERAUGE M8-LH | BEARING PIECE | PIECE DE PALIER |
| 17 | 0337003 | SKT. MUTTER M6 | HEXAGON NUT M6 | ECROU A SIX PANS M6 |
| 18 | 0302047 | SKT. SCHRAUBE M6X40 | HEXAGON SCREW M6 | VIS A SIX PANS M6 |
| | 9627650 | STOPFEN FÜR BODENWANNE | PLUG FOR BASE TROUGH | BOUCHON POUR CUVETTE DE FOND |
| 19 | 9600371 | FÜHRUNGSSCHIENE | GUIDING RAIL | GLISSIERE DE GUIDAGE |
| | 9600455 | KORBTRÄGER KPL. | BASKET GUIDE RAIL COMPL. | SUPPORT DE PANIERS COMPL. |
| | 0620455 | ABSTANDSHALTER FÜR VERKLEIDUNGEN | SPACER FOR CLADDING | E CARTEUR POUR REVETEMENT |

18.14 LAUGENPUMPE

18.14 DRAIN PUMP

18.14 POMPE DE VIDANGE

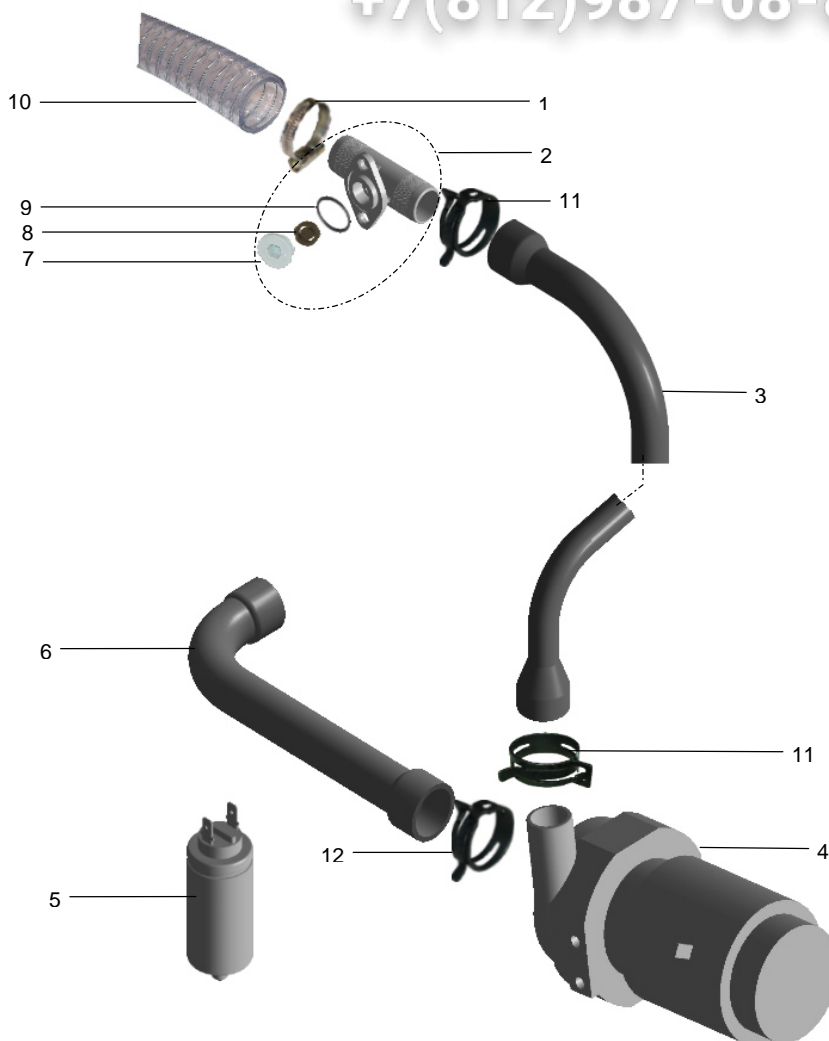
Зип Общепит

vsezip.ru

+7(812)987-08-81



Lp18_14.doc
01.07.2003/BP



| POS | IDENT. NR. IDENT. NO. | BEZEICHNUNG | DESIGNATION | DESIGNATION |
|-----|--------------------------|-----------------------|--------------------------|------------------------------|
| 1 | 0233045 | SCHLAUCHKLEMME 20/32 | HOSE WIRE CLAMP 20/32 | COLLIER DE SERRAGE 20/32 |
| 2 | 9515229 | BELÜFTUNGSVENTIL KPL. | VENT VALVE CPL. | VALVE D'AERATION CPL. |
| 3 | 9600813 | SCHLAUCHVERBINDUNG | HOSE | TUYAU |
| 4 | * 9535710 | LAUGENPUMPE KPL. | DRAIN PUMP CPL. | POMPE DE VIDANGE CPL. |
| | V 9543778 | GLEITRINGDICHTUNG | SLIDING SEAL COMPL. | JOINT AXIAL CPL. |
| | * 9543779 | PUMPENLAUFRAD | PUMP WHEEL | ROUE DE POMPE |
| | 9543780 | PUMPENGEHÄUSE | PUMP HOUSING | CORPS DE POMPE |
| | * 9543781 | GEHÄUSEDICHTUNG | PACKING FOR PUMP HOUSING | JOINT POUR CORPS DE POMPE |
| 5 | * 9520030 | KONDENSATOR 5UF | CONDENSER 5UF | CONDENSEUR 5UF |
| 6 | 9600814 | SCHLAUCHVERBINDUNG | HOSE | TUYAU |
| 7 | 9515231 | VERSCHLUßSCHRAUBE | SCREW | VIS |
| 8 | * 9515234 | DICHTUNG | PACKING | JOINT |
| 9 | * 0401016 | O-RING 21X2 | O-RING 21X2 | BAGUE 21X2 |
| 10 | 9007232 | SCHLAUCH 22 X 2500 | HOSE 22 X 2500 | TUYAU 22 X 2500 |
| 11 | 9607417 | FEDERBANDSCHELLE Ø30 | HOSE CLAMP TAPE Ø30 | RUBAN COLLIER DE SERRAGE Ø30 |
| 12 | 9607416 | FEDERBANDSCHELLE Ø36 | HOSE CLAMP TAPE Ø36 | RUBAN COLLIER DE SERRAGE Ø36 |

21.07-DAMPFSYSTEM

21.07 STEAM SYSTEM

21.07 SYSTEME DE VAPEUR

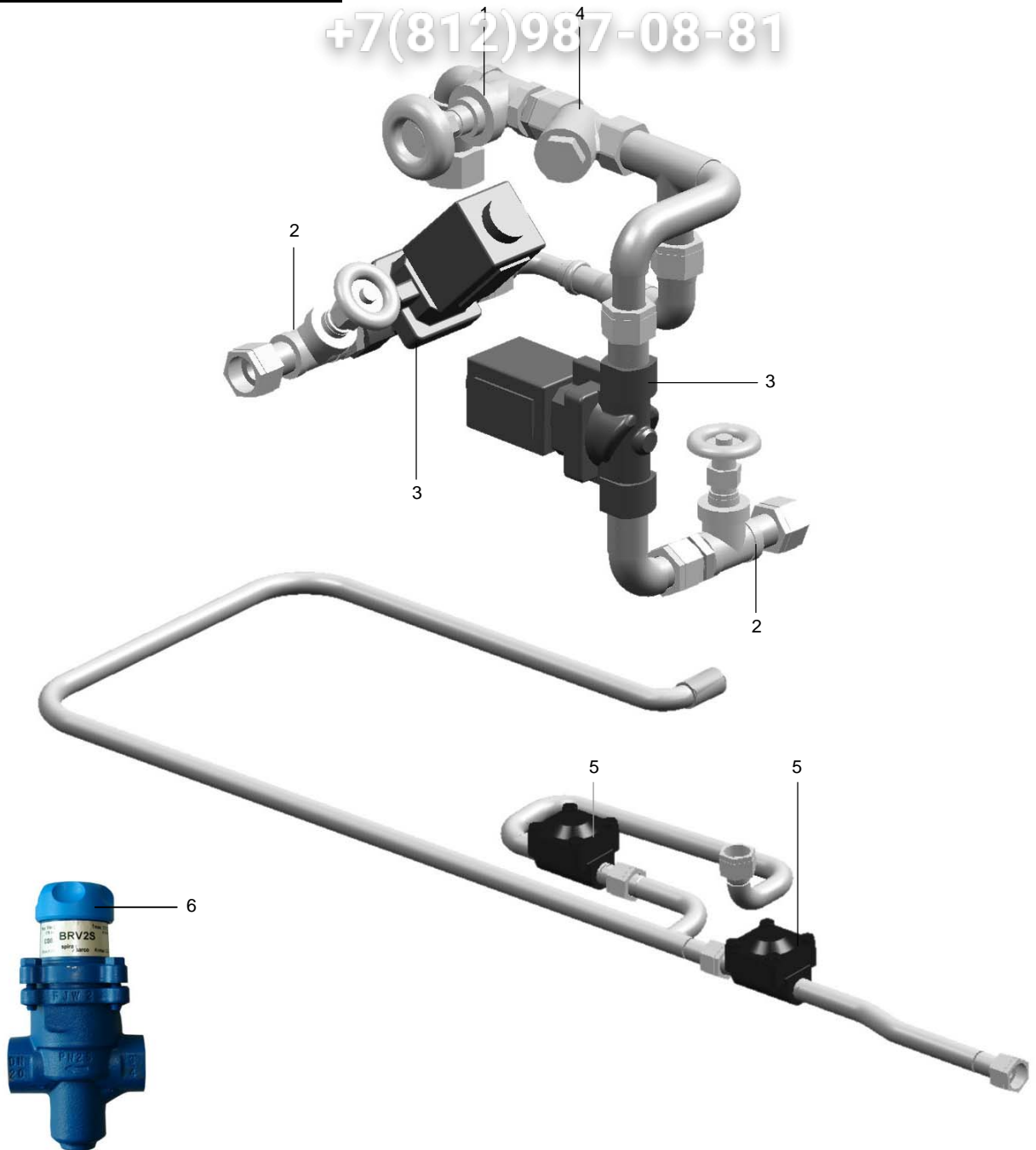
Зип Ощепит

vsezip.ru

+7(812)987-08-81



NDD21_7.doc
2008-06-24/BP



| POS | IDENT. NR. IDENT. NO. | BEZEICHNUNG | DESIGNATION | DESIGNATION |
|-----|--------------------------|-----------------------------|------------------------------|-------------------------------|
| 1 | 0240026 | ABSPERRSCHIEBER 3/4" | STOP BAFFLE 3/4" | CLAPET D'ARRÊT 3/4" |
| 2 | 0240028 | ABSPERRSCHIEBER 1/2" | STOP BAFFLE 1/2" | CLAPET D'ARRÊT 1/2" |
| 3 | 0113100 | MAGNETVENTIL 3/4" | SOLENOID VALVE 3/4" | ÉLECTROVANNE 3/4" |
| 4 | 0225008 | SCHMUTZFÄNGER 3/4" | DIRT TRAP 3/4" | COLLECTEUR DE SALETES 3/4" |
| 5 | 0232043 | KONDENSATABLEITER 1/2" | STEAM TRAP 1/2" | PURGEUR DE VAPEUR 1/2" |
| | 0408106 | FLACHDICHTUNG 23,5X15,5X1,6 | FLAT PACKING 23,5X15,5X1,6 | GARNITURE PLATE 23,5X15,5X1,6 |
| 6 | 9653489 | DRUCKMINDERER 3/4" | PRESSURE REDUCING VALVE 3/4" | REDUCTEUR DE PRESSION 3/4" |

22.10 DRUCKSTEIGERUNGSPUMPE

22.10 BOOSTER PUMP

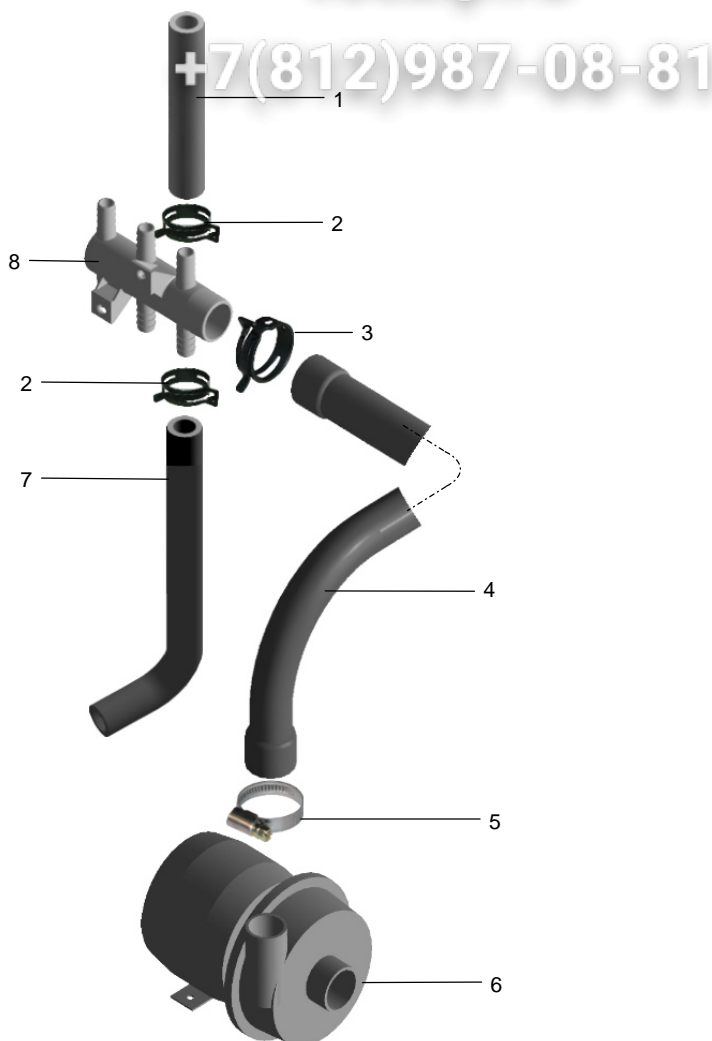
22.10 SURPRESSEUR

Зип Общепит

vsezip.ru



DSP22_10.doc
01.12.2002/FUS



| POS | IDENT. NR. IDENT. NO. | BEZEICHNUNG | DESIGNATION | DESIGNATION |
|-----|--------------------------|--------------------------------------|--|--|
| 1 | 9608600 | SCHLAUCH ½" | HOSE ½" | TUYAU ½" |
| 2 | 9607418 | FEDERBANDSCHELLE Ø21 | HOSE CLAMP TAPE Ø21 | RUBAN COLLIER DE SERRAGE Ø21 |
| 3 | 9607416 | FEDERBANDSCHELLE Ø36 | HOSE CLAMP TAPE Ø36 | RUBAN COLLIER DE SERRAGE Ø36 |
| 4 | 9600844 | SCHLAUCHVERBINDUNG | HOSE | TUYAU |
| 5 | 0233046 | SCHLAUCHKLEMME 32-50 | HOSE WIRE CLAMP 32-50 | COLLIER DE SERRAGE 32-50 |
| 6 | * 9547992 | DRUCKSTEIGERUNGSPUMPE KPL. | BOOSTER PUMP CPL. | SURPRESSEUR CPL. |
| V | 9548658 | GLEITRINGDICHTUNG KPL. | SLIDING SEAL CPL | JOINT AXIAL CPL. |
| * | 0501137 | PUMPENLAUFRAD | PUMP WHEEL | ROUE DE POMPE |
| | 0501091 | PUMPENGEHÄUSE | PUMP HOUSING | CORPS DE POMPE |
| * | 0501094 | GEHÄUSEDICHTUNG | PACKING FOR PUMP HOUSING | JOINT POUR CORPS DE POMPE |
| 7 | 9607559 | SCHLAUCHVERBINDUNG | HOSE | TUYAU |
| 8 | 9600841 | VERTEILER FÜR FV 130.2 | DISTRIBUTOR FOR FV 130.2 | DISTRIBUTEUR POUR FV 130.2 |
| | 9603727 | VERTEILER FÜR FV 250.2 / DV 270.2 | DISTRIBUTOR FOR FV 250.2 / DV 270.2 | DISTRIBUTEUR POUR FV 250.2 / DV 270.2 |
| * | 0501090 | KONDENSATOR 12MF | CONDENSER 12MF | CONDENSEUR 12MF |

24.07 FREIER AUSLAUF

24.07 AIR GAP

24.07 ECOULEMENT LIBRE

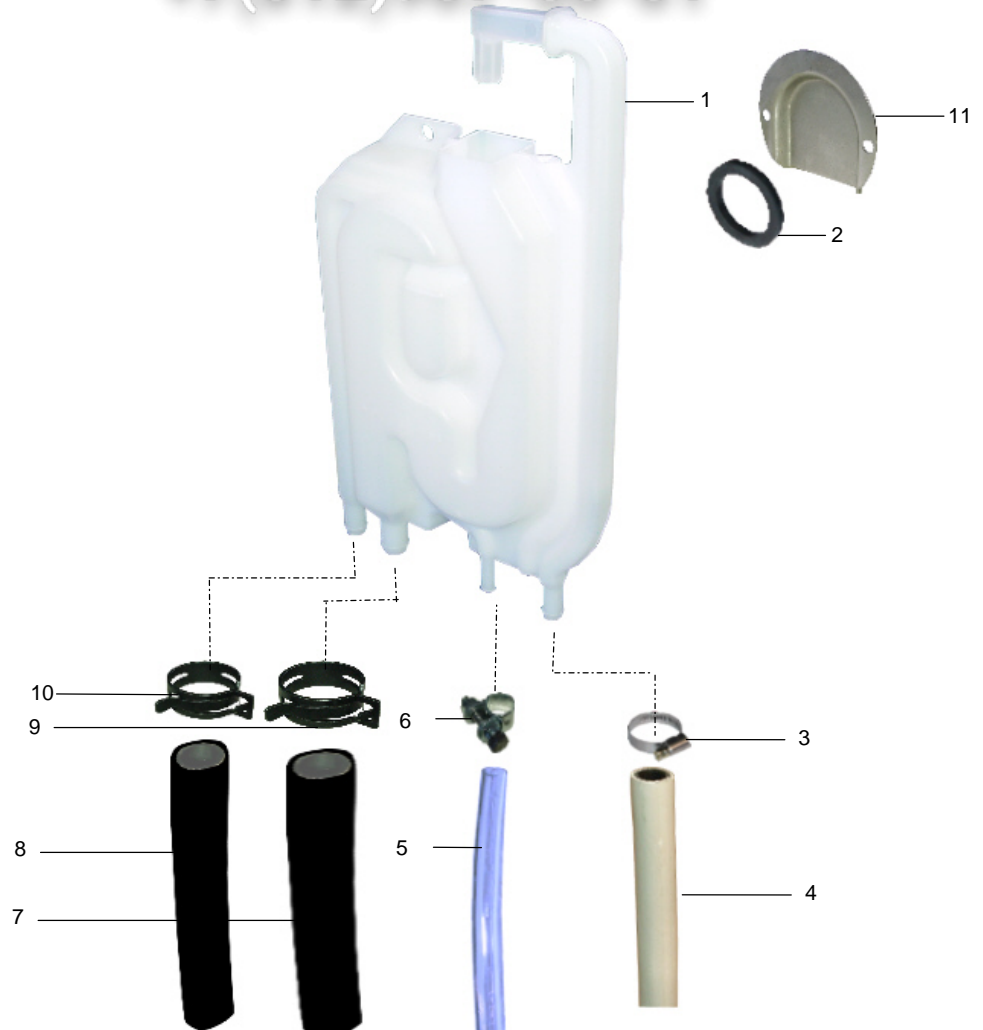
Зип Общепит

vsezip.ru

+7(812)987-08-81



Fa24_7.doc
01.12.2002/FUS



| POS | IDENT. NR. IDENT. NO. | BEZEICHNUNG | DESIGNATION | DESIGNATION |
|-----|--------------------------|-----------------------------|---------------------------------|-------------------------------------|
| 1 | * 9523195 | FREIER AUSLAUF KPL. | AIR GAP CPL. | ECOULEMENT LIBRE CPL. |
| 2 | * 0650076 | DICHTUNG | PACKING | JOINT |
| 3 | 0233036 | SCHLAUCHKLEMME 10/16 | HOSE WIRE CLAMP 10/16 | COLLIER DE SERRAGE 10/16 |
| 4 | | SIEHE BLATT 04 MAGNETVENTIL | SEE PAGE 04 SOLENOID VALVE | VOIR PAGE 04 ELECTRO VANNE |
| | | SIEHE BLATT 10 DOSIERGERÄTE | SEE PAGE 10 DOSING UNITS | VOIR PAGE 10 DOSEURS |
| 5 | V 9538712 | SCHLAUCH BLAU Ø6 | HOSE BLUE Ø6 | TUYAU BLEU Ø6 |
| 6 | 9605930 | SCHLAUCHKLEMME 8,5-9,5 | HOSE WIRE CLAMP 8,5-9,5 | COLLIER DE SERRAGE 8,5-9,5 |
| 7 | | SIEHE BLATT 08 EINBAUBOILER | SEE PAGE 08 INCORPORATED BOILER | VOIR PAGE 08 SURCHAUFFEUR INCORPORE |
| 8 | | SIEHE BLATT 08 EINBAUBOILER | SEE PAGE 08 INCORPORATED BOILER | VOIR PAGE 08 SURCHAUFFEUR INCORPORE |
| 9 | 9607418 | FEDERBANDSCHELLE Ø21 | HOSE CLAMP TAPE Ø21 | RUBAN COLLIER DE SERRAGE Ø21 |
| 10 | 9609462 | FEDERBANDSCHELLE Ø17 | HOSE CLAMP TAPE Ø17 | RUBAN COLLIER DE SERRAGE Ø17 |
| 11 | 8000609 | WASSERLEITBLECH | WATER GUIDING SHEET | TOLE DE DEVIATION D'EAU |

29.01 WASCHARMANTRIEB

29.01 WASH ARM DRIVE

29.01 COMMANDE DU BRAS DE LAVAGE

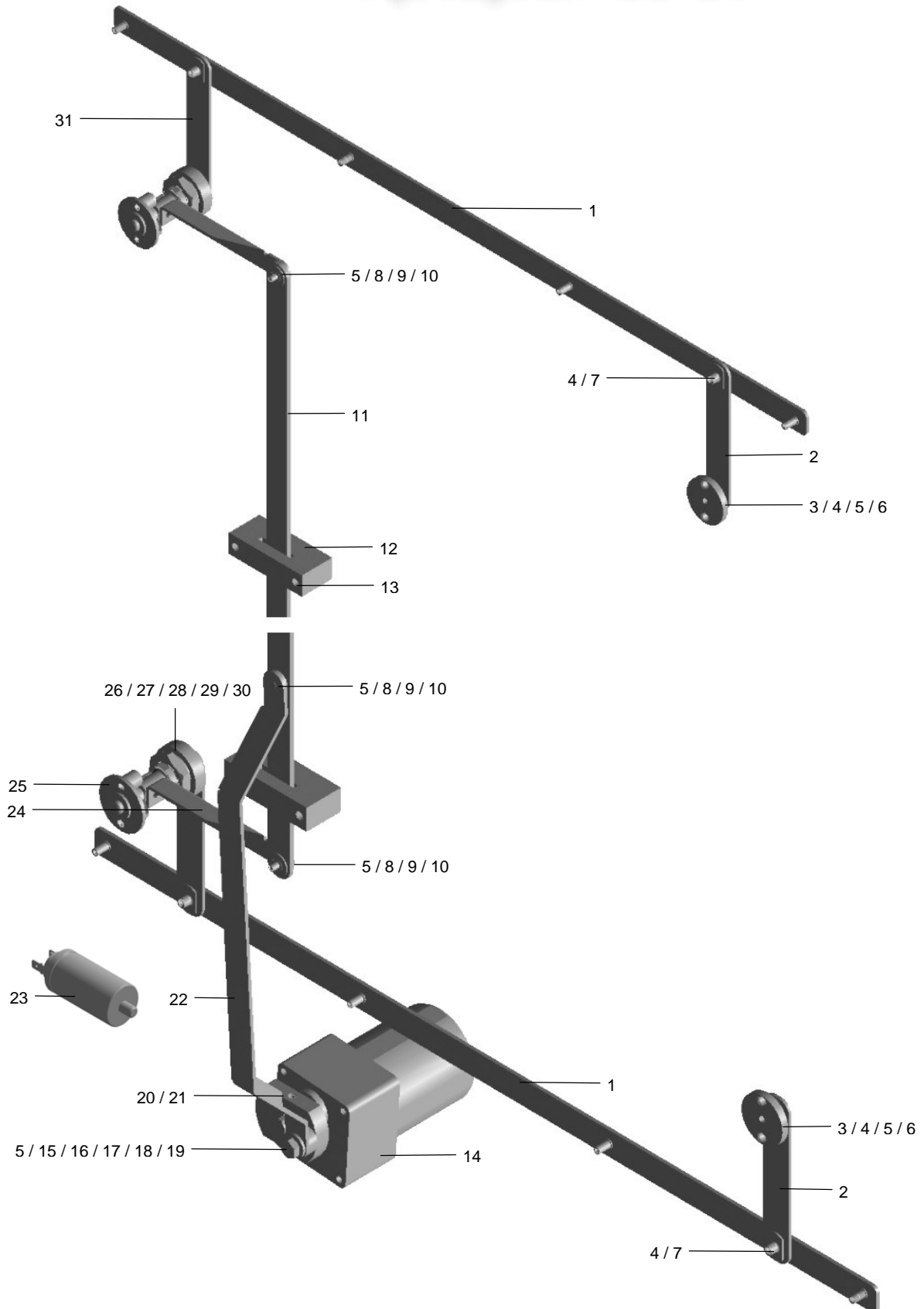
Зип Общепит

vsezip.ru

+7(812)987-08-81



WA29_1.doc
01.07.2002/FUS



29.01 WASCHARMANTRIEB

Зип Общепит

29.01 WASH ARM DRIVE

vsezip.ru

29.01 COMMANDE DU BRAS DE LAVAGEWA29_1.doc
01.07.2002/FUS

+7(812)987-08-81

| POS | IDENT. NR. IDENT. NO. | BEZEICHNUNG | DESIGNATION | DESIGNATION |
|-----|--------------------------|---------------------------|---------------------------|-------------------------------------|
| 1 | 9600635 | SCHIENE | RAIL | RAIL |
| 2 | 9600795 | HEBEL | LEVER | LEVIER |
| 3 | * 9600646 | LAGERGEHÄUSE | BEARING HOUSING | CORPS DE PALIER |
| 4 | * 9600796 | LAGERBUCHSE | BEARING BUSH | COUSSINET |
| 5 | 0337001 | MUTTER M5 | NUT M5 | ECROU M5 |
| 6 | 0340021 | SCHEIBE | DISK | DISQUE |
| 7 | * 9600641 | LAGERRING | BEARING RING | ANNEAU DE SUPPORT |
| 8 | 9600788 | SCHEIBE | DISK | DISQUE |
| 9 | * 9600714 | LAGERBUCHSE | BEARING BUSH | COUSSINET |
| 10 | 0340020 | SCHEIBE | DISK | DISQUE |
| 11 | 9600702 | SCHIENE | RAIL | RAIL |
| 12 | 9600739 | LAGERBOCK | BEARING BLOCK | SUPPORT DE PALIER |
| 13 | 9600741 | PLATTE | PLATE | PLAQUE |
| 14 | * 9651040 | GETRIEBMOTOR 230V 50HZ | DRIVE MOTOR 230V 50HZ | MOTEUR DE ENTRAINEMENT 230V 50HZ |
| 15 | * 9600651 | LAGERBUCHSE | BEARING BUSH | COUSSINET |
| 16 | * 9600722 | HÜLSE | BUSHING | COUSSINET |
| 17 | 0302009 | SCHRAUBE M8X30 | SCREW M8X30 | VIS M8X30 |
| 18 | 0340056 | SCHEIBE | DISK | DISQUE |
| 19 | 9606415 | DISTANZRING | SPACER RING | BAGUE D'ECARTEMENT |
| 20 | 9600738 | EXZENTERSCHEIBE | ECCENTRIC DISK | DISQUE DE L'EXCENTRIQUE |
| 21 | 0302044 | SKT. SCHRAUBE M5X15 | HEXAGON SCREW M5X15 | VIS A 6 PANS M5X15 |
| 22 | 9600719 | SCHIENE | RAIL | RAIL |
| 23 | * 9538345 | KONDENSATOR 1µF | CONDENSER 1µF | CONDENSEUR 1µF |
| 24 | 9600725 | HEBELARM | LEVER | LEVIER |
| 25 | * 0620372 | GLEITLAGER | SLIDING BEARING | PALIER A GLISSEMENT |
| 26 | * 9600632 | LAGERGEHÄUSE | BEARING HOUSING | CORPS DE PALIER |
| 27 | * 0402003 | RADIALWELLENDICHTRING | RADIAL SHAFT PACKING RING | JOINT POUR ARBRE RADIALE |
| 28 | * 0401023 | O-RING | O-RING | BAGUE |
| 29 | 9600728 | SKT. MUTTER | HEXAGON NUT | ECROU A 6 PANS |
| 30 | * 9600640 | LAGERBUCHSE | BEARING BUSH | COUSSINET |
| 31 | * 9600730 | HEBEL | LEVER | LEVIER |

Das Programm auf einen Blick

1

**Spülautomaten mit stationärem
Waschverfahren**
Geschirr- und Gläserspülautomaten;
Topf- und Behälterspülautomaten;
Salat- und Gemüsewaschautomaten

2

Spülautomaten mit Durchlaufsystem
Geschirrspülautomaten mit Bandtransport-,
Korbtransport- oder Umlaufsystem

3

Spezialspülanlagen
Vollautomatische Spülanlagen für Geschirr,
Tablets und Besteck; Flight-Catering-
Anlagen; Industriespülautomaten; Trolley-,
Behälter- und Transportwagenspülanlagen

4

Förderanlagen
Tablett- und Geschirrtransportbänder,
Geschirrsortier- und Stapleinrichtungen

5

Speisereste-Behandlungsanlagen
Maschinen und Anlagen zur Aufbereitung
von Speiseresten für eine umweltgerechte
Entsorgung

6

Großkücheneinrichtungen
Geräte und Mobiliar für Relais- und Stations-
küchen; Transportwagen; Tablett- und Teller-
stapler; Tische, Schränke und Regale aus
Edelstahl; diverse Organisationsmittel

7

**Sanitäreinrichtungen für Krankenhäuser
und Heime**
Reinigungs- und Desinfektionsautomaten
für Steckbecken und andere Pflegegeschirre;
Pflegekombinationen; Komplettausstattung
für Unreine Arbeitsräume

Our product range

+7(812)987-08-81

**Automatic dishwashing machines
with fixed washing system**

**Belt conveyor and rack transport
machines**
for continuous throughput operations

Special purpose warewashing solutions
such as semi and fully automatic systems,
designed for the catering industry in general

Conveying systems
for vertical and horizontal transport of trays
and dishes

Food waste treatment systems
Water conditioning appliances

Central wash-up equipment
Tables, cabinets, tray and plate stackers

**Sanitary appliances for healthcare
establishments**
Automatic cleaning and disinfection
appliances for bedpans and other care
utensils

Notre gamme de production

**Lave-vaisselle à procéder de lavage
stationnaire**
Automates de lavage

**Lave-vaisselle automatiques à passage
continu**
Lave-vaisselle automatiques à convoyeur et
à transport de paniers

Lave-vaisselle spéciaux
Installations de lavage entièrement
automatiques et semi-automatiques,
lave-vaisselle industriels

Installations de transport
pour le transport vertical et horizontal de
plateaux

**Installations de traitement de déchets
alimentaires**
ainsi que des installations de traitement
d'eau

Installations pour grandes cuisines
Tables, empileurs de plateaux et d'assiettes

**Installations sanitaires pour hôpitaux et
maisons de soins**
Automates de nettoyage et de désinfection,
combinés de soins



MEIKO Maschinenbau GmbH & Co. KG
Englerstr. 3 · 77652 Offenburg · Germany
Tel. + 49 (0)781/203-0
Fax +49 (0)781/203-1274
e-mail: info@meiko.de · www.meiko.de