

Зип Общепит

vsezip.ru

+7(812)987-08-81



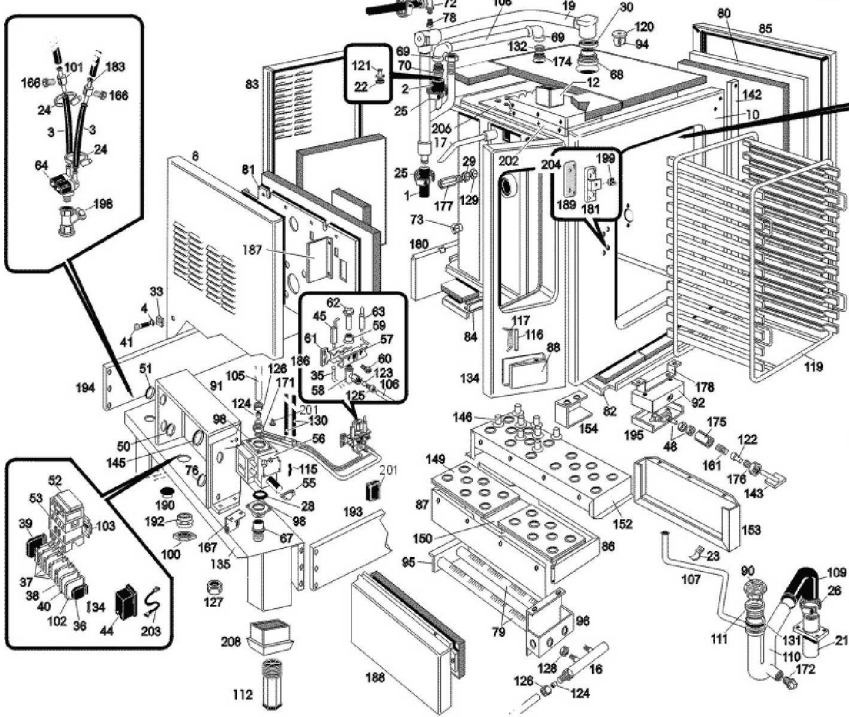
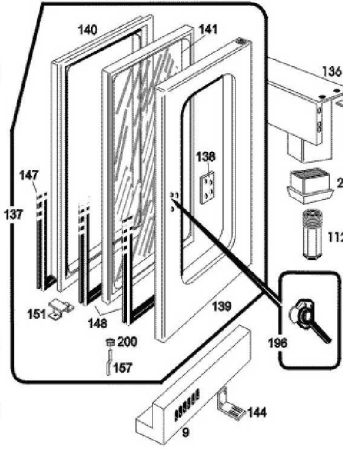
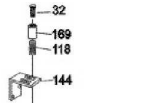
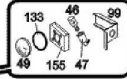
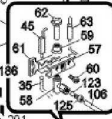
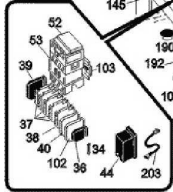
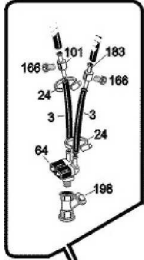
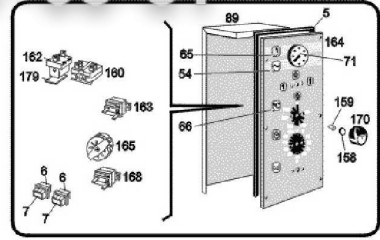
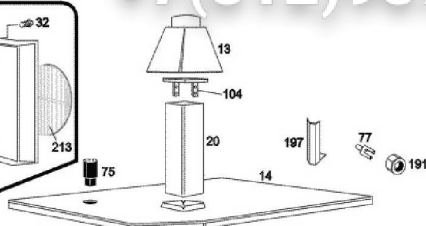
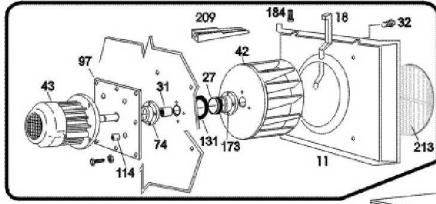
FC241G

Edition 20141007-

Зип Ощепит

vsezip.ru

+7(812)987-08-81



Pos	Code	Description	Info
001	111AA05	RUBBER HOSE Ø30 Ø20	01/05/1997-
002	131AA23	RUBBER HOSE Ø35 Ø28	01/05/1997-
003	131AA12	RUBBER HOSE Ø17 Ø10 X H ² O	01/05/1997-
004	3188650	WASHER	23/11/2010-
005	137AA15	GASKET	01/05/1997-
006	170WR01	JUNCTION BOX	01/05/1997-
007	171WR01	JUNCTION BOX	01/05/1997-
008	35C3711	LH PANEL ASS.Y	22/01/1998-
009	30W3261	TRAY ASS.Y	14/04/1999-
010	30D5361	COOKING CHAMBER	01/06/1998-
011	35Y1500	CHAMBER CONVEYOR	15/01/2000-
012	30D3412	FLUE ASS. Y	02/02/1999-
013	30D1782	FLAME DEFLECTOR	01/05/1997-
014	30G2920	OVEN COVER ASS. Y	01/05/1997-
016	30Z7590	GAS MANIFOLD	01/05/1997-
017	30Z2050	PIPE AISI304 Ø12- 159X77	01/06/1998-
018	30Z2590	END PIPE, COMPLETE	15/01/2000-
019	30Z7771	STEAM DRAIN PIPE	01/05/1997-
020	30Z7700	DRAIN PIPE ASS. Y	01/05/1997-
021	33Q6100	LOWER DRAIN PIPE	01/05/1997-
022	36G6750	RING NUT	01/05/1997-
023	3140060	PIPE SUPPORT Ø 28	01/05/1997-
024	3140230	12/20 PIPE CLAMP	01/05/1997-
025	3140300	HOSE CLAMP	01/05/1997-
026	3140380	HOSE CLAMP	01/05/1997-
027	3150900	GASKET	01/05/1997-
028	3152300	O RING GASKET	17/03/2000-
029	3151441	WASHER Ø22Ø16.2=1.5 CU	14/10/1998-
030	3151450	WASHER	01/05/1997-
031	3151490	BEARING	01/05/1997-
032	3190020	SCREW M6X10	01/05/1997-
033	3170110	ACCOMODATION Ø6	01/05/1997-
034	3201540	FUSE 5X20	01/05/1997-
035	32A0390	CABLE "HF" 1200MM	01/05/1997-
036	32D0870	TERMINAL CLAMP	01/05/1997-
037	32D0950	LIVE TERMINAL	01/05/1997-
038	32D0970	GROUND TERMINAL	01/05/1997-
039	32D0960	TERMINAL END COVER	01/05/1997-
040	32D1730	FUSE TERMINAL BOARD	24/01/2002-
041	31X0170	PIN FT Ø6	01/05/1997-
042	32M3992	FAN	09/06/1998-
043	32M3820	MOTOR	01/05/1997-
044	32T0210	SPARK IGNITION DEVICE	20/03/2001-
045	32T0010	IGNITION PLUG	27/01/2010-
046	32W0210	OVEN LAMP 25 W	01/05/1997-
047	32W2561	LAMP HOLDER	01/05/1997-
048	32W3340	MICROSWITCH	14/11/1999-
049	6300645	GLASS + WASHER	04/08/2004-
050	32X0120	GROMMET Ø 21	01/05/1997-
051	32X0130	GROMMET Ø29-Ø37	01/05/1997-
052	32V1010	RELAY	08/04/1998-

Pos	Code	Description	Info
052	32V1020	RELAY 1.4-2.3A	08/04/1998-
053	32Z2531	RELAY 240V-50/60HZ	31/12/1997-
053	3100910	RELAY 220/230V-	01/01/2008-
054	32W0101	50/60Hz GREEN LIGHT	01/05/1997-
055	33A0020	COMPL. VALVE	01/05/1997-
056	33A0460	"GAS THERMOST. NOVASIT 320 1/2"	17/03/2000-
057	33A0950	REAR BRACKET	01/05/1997-
058	33A2900	PILOT BURNER BODY	01/05/1997-
059	33A0970	RING NUT	01/05/1997-
060	33A0980	SCREW 3/16W. X18TE	01/05/1997-
061	33A1000	FRONT BRACKET	01/05/1997-
062	33A1081	THREE-FLAME BURNER	24/04/2008-
063	6021770	INTERRUPTED THERMOC. M9X1X1000 CAB	01/06/2001-
064	33D2410	"SOLENOID VALVE 3/4" 1IN-2OUT"	10/05/1999-
065	32W0450	RED LAMP	01/05/1997-
066	32W2250	ORANGE LIGHT 220V	01/05/1997-
067	33Q3870	GAS INLET CONNECTOR	17/03/2000-
068	33Q5410	VALVE CONNECTOR	01/05/1997-
069	33Q5420	"ELBOW FF 3/4"	01/05/1997-
070	33Q5450	DEPRES. CONNECTOR	01/05/1997-
071	32Z0151	THERMOMETER	01/05/1997-
072	33Q5592	NOZZLE SUPPORT. ELBOW	01/05/1997-
073	33Q5830	CONNECT.	01/05/1997-
074	33Q5690	BUSHING SUPPORT	01/05/1997-
075	33Q5980	SOUND REDUC.	01/05/1997-
076	32X0200	CONNECTOR GROMMET $\varnothing 7.5-\varnothing 11.5$	01/05/1997-
077	36D8492	FEELER SUPPORT	01/05/1997-
078	33T3720	NOZZLE	01/05/1997-
079	34A0500	BURNER 15 KW	01/05/1997-
080	35C2700	INSULATION PANEL COVER	01/05/1997-
081	35C4571	INSULATION PANEL COVER	01/05/1997-
081	35D2280	BACK ROOM	01/05/1997-
082	35C3560	INS. PANEL COVERING	01/05/1997-
083	35C4310	BACK PANEL	01/05/1997-
084	35B8510	"L" BRACKET	01/05/1997-
085	35C3190	RIGHT PANEL	01/05/1997-
086	35D2270	FRONT ROOM	01/05/1997-
087	35D2280	BACK ROOM	01/05/1997-
088	35G3180	SLOT COVER	01/05/1997-
089	30Q0850	COMPON. PROTECTION	01/05/1997-
090	3033400	FILTER	01/05/1997-
091	35Q8202	PANEL BOARD	20/03/2001-
092	35Q2380	END RUN PROTECTION	01/05/1997-
095	35S6010	BACK BURNER SUPPORT	01/05/1997-
096	30T2140	BURNER SUPPORT ASS. Y	01/05/1997-
097	35S6082	FLAT BRACKET	01/05/1997-
098	33Q3880	TEE	17/03/2000-
099	35V8081	LAMPHOLDER SUPPORT	01/05/1997-
100	32D0200	LOCK NUT PG16	01/05/1997-
101	33Q5921	CONNECTOR	01/05/1997-
102	32D1740	TERMINAL	24/01/2002-

Pos	Code	Description	Info
103	35V5810	OMEGA BRACKET	01/05/1997-
104	35T6710	AIR DEFLECTOR	01/05/1997-
105	35X3301	FEEDING PIPE	27/04/2000-
106	35X4570	PIPE	17/03/2000-
107	35X0750	DRAIN PIPE	01/05/1997-
108	35X0550	PIPE	01/05/1997-
109	33M1170	PIPE	01/05/1997-
110	36A3390	DRAIN TRAP	01/05/1997-
111	36A3400	DRAIN	01/05/1997-
112	36C3220	FOOT S/S ASSEMBLY	23/01/1998-
114	36D7140	BUSHING	01/05/1997-
115	36G3690	SPRING	01/05/1997-
116	36G7820	PIN	01/05/1997-
117	36G7960	TORSION SPRING	01/05/1997-
118	36G5320	SPRING	01/05/1997-
119	36G7631	TROLLEY	23/04/2003-
120	6300591	VALVE	31/12/2005-
121	36G6740	COUNTERWEIGHT	01/05/1997-
122	36G6041	END RUN PIN	20/01/2000-
124	36Q0030	BICONE Ø12X8	01/05/1997-
126	36Q0050	BICONE NUT Ø 12	01/05/1997-
127	36Q1100	LOCK NUT 3/4"	01/05/1997-
128	36Q1110	LOCK NUT 3/8"	01/05/1997-
129	36Q1171	LOCKNUT M16X1.5	01/05/1997-
130	32A0780	CABLE	01/05/1997-
131	37Q3011	GASKET	01/05/1997-
132	3151730	GASKET	01/05/1997-
133	37Q7840	GASKET	01/05/1997-
134	30A3930	CONTROL PANEL	01/05/1997-
135	30T5714	SMALL END SUPPORT	23/01/1998-
136	30T3081	SMALL END SUPPORT	23/01/1998-
137	6300419	DOOR ASSEMBLY	01/05/1997-
138	35V9050	HANDLE SHAPED BAR	01/05/1997-
139	30G1461	DOOR ASS. Y	01/05/1997-
140	35G0380	OVEN COUNTER DOOR	01/05/1997-
141	37M0271	CHAMBER GLASS ASS. Y	01/05/1997-
142	35V4430	PLATE	01/05/1997-
143	30T2250	LIMIT SWITCH COMM. ASS. Y	01/05/1997-
144	36M4122	DOOR HINGE	01/05/1997-
145	32X0140	GROMMET Ø13,5-Ø25	01/05/1997-
146	33Q6230	BUSHING	01/05/1997-
147	37Q0992	DOOR GASKET	14/04/1999-
148	37Q3001	GLASS GASKET	21/04/1999-
149	35D2290	COMB. CHAMBER SCREEN	01/05/1997-
150	35D2260	SUPPORT COMB. CHAMBER	01/05/1997-
151	35V9030	CHAMBER GLASS SUPP.	01/05/1997-
152	35V8511	SUPPORT COMB. CHAMBER	01/05/1997-
153	35C3570	INSULATION PANEL COVER	01/05/1997-
154	35V3330	SPILLAGE TRAY SUPP. LH	01/05/1997-
155	35V8072	LAMP HOLDER BOX	01/05/1997-
157	35X3430	DOOR DRAIN PIPE	01/05/1997-

Pos	Code	Description	Info
158	3150790	THERMOSTAT PROTECT.	01/05/1997-
159	3170290	KNOB SPRING	01/05/1997-
160	32W0490	SWITCH	01/05/1997-
161	36G7140	SPRING	01/05/1997-
162	3111950	SAFETY THERMOSTAT	29/10/2008-
163	32Z5820	THERMOSTAT 50-250°	01/05/1997-
164	37M4201	PLASTIC COATED PANEL	01/05/1997-
165	32Z2200	TIMER 0-120'	01/05/1997-
165	32Z6440	TIMER 0-120 60HZ	01/05/1997-
166	33Q5840	"PLUG 1/8""	01/05/1997-
167	35R5350	SUPPORT SOLENOID VALVE	17/03/2000-
168	32Z5880	THERMOSTAT 30-90°C	01/05/1997-
169	36D7062	PIN	07/10/2014-
170	36M4560	ELECTRIC CONTROL KNOB	01/05/1997-
171	33Q5880	CONNECT. R1/2- M20X1.5	01/05/1997-
172	33Q3210	PLUG	01/05/1997-
173	33Q5381	RING SUPPORT	01/05/1997-
174	33Q5390	"RING 3/4""	01/05/1997-
175	33Q4120	CONNECT.	14/11/1999-
176	33Q5610	M16X1.1M10 RING M16X1.5	01/05/1997-
177	33Q5630	CONNECT MF 3/8"- M16	01/05/1997-
178	35V9250	LIMIT SWITCH PROFILE	01/05/1997-
179	35S6361	L" SHAPED BAR	01/05/1997-
180	30T1502	COMB. CHAMBER SUPPORT ASS.Y	01/05/1997-
181	36M0820	LOCK HOUSING	01/05/1997-
183	33Q6081	CONNECTOR Ø 0.7	01/05/1997-
184	3190040	SCREW M6X20	01/05/1997-
186	6300427	PILOT BURNER ASS. Y	01/05/1997-
187	35Q8870	"L" BRACKET	01/05/1997-
188	35C4580	INS. PANEL COVERING	01/05/1997-
189	36M1570	LOCK SPACER	01/05/1997-
190	36Q0380	PLUG Ø38	01/05/1997-
191	36Q0550	LOCK NUT M12X1.5	01/05/1997-
192	32D0190	FAIRLEAD Ø 6 Ø 16	01/05/1997-
193	35R0870	FRONT PANEL	01/05/1997-
194	35R1510	BACK PANEL	01/05/1997-
195	35Q2360	SUPP. END RUN PROTECTION	01/05/1997-
196	36M6380	OVEN DOOR HANDLE	05/05/1999-
197	35Q6360	THERMORES.	01/05/1997-
198	33Q6091	PROTECTION H2O FILTER 3/4"	01/05/1997-
199	36E2530	PLASTIC INSERT LOCK	01/05/1997-
200	36Q0910	GLASS PIPE GUIDE	01/05/1997-
202	35E0351	FLUE PANEL	08/02/1999-
203	32A1640	CABLE "HF" 150MM	01/05/1997-
204	6300420	LOCK ASS. Y	01/05/1997-
205	32Q1261	EL. CABLES FC	01/05/1997-
206	37Q3890	GASKET	01/12/1997-
207	36Q1550	CAP Ø11	22/01/1998-
208	36E0600	FOOT SUPPORT 2"	23/01/1998-
209	35Y0570	WATER ENTRY PROFILE	01/06/1998-
210	33D2470	SOL. VALVE SUPP.	10/05/1999-

Pos	Code	Description	Info
211	32D1430	CONNECTOR	17/03/2000-
212	33D2140	PIN VALVE	17/03/2000-
213	36D8851	FAN GUARD	15/01/2000-

+7(812)987-08-81