

Зип Общепит

vsezip.ru

+7(812)987-08-81

DISHWASHER

ELECTROMECHANICAL SWITCHES
LOWER AND UPPER WASHING

TYPE: 7U

Accessories

BREAK TANK

BOOSTER PUMP

DVGW

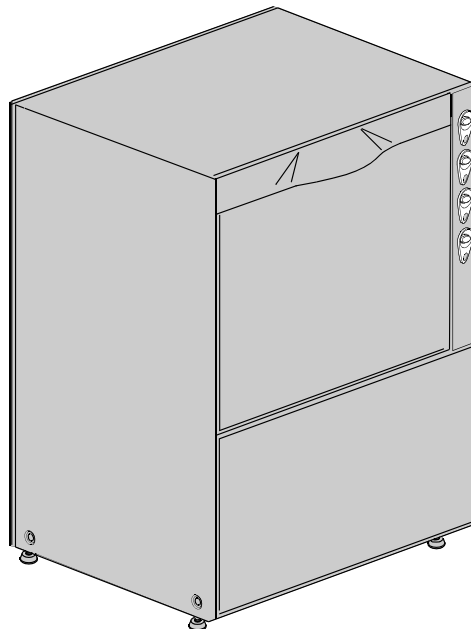
COLD RINSE

WATER SOFTNER

DETERGENT DISPENSER

DRAIN PUMP

Spare Parts Manual



INFORMAZIONI GENERALI

Questo catalogo serve per richiedere con esattezza le parti di ricambio

Nelle ordinazioni indicare:

1) il numero dei codici dei particolari seguito dalla descrizione e la quantità desiderata;

2) Il codice alfa-numerico presente nella seconda colonna della tabella ;

I disegni delle parti di ricambio sono solo indicativi e non rappresentano il pezzo in oggetto.

I dati contenuti in questo catalogo sono indicativi e possono essere soggetti a modifiche senza impegno di preavviso.

ALLGEMEINE INFORMATIONEN

Dieser Ersatzteilkatalog dient zur genauen Angabe der Teile bei Ersatzteilbestellungen.

Bei Ersatzbestellung ist folgendes anzugeben:

1) Die Bestellnummer der Ersatzteile mit der entsprechenden Beschreibung genaue Menge;

2) Der alpha-numerischer Code auf der zweiten Reihe in dein Sculd;

Die Zeichnungen der Ersatzteile sind nur als Hinweise gedacht und stellen nicht das betroffene Teil dar.

Bei den im Katalog angeführten Daten handelt es sich um Anhaltsdaten, die jederzeit, ohne Vorankündigung, geändert werden können.

GENERAL INFORMATION

The present spare parts order exactly the right spare parts

When ordering specify:

1) the part's code number followed by its description and quantity needed;

2) The alpha-numeric code is in the second column in the chart;

Spare parts drawings are general and do not represent the part.

The contents of this catalogue are general and can undergo changes without prior notice.

INFORMACIONES GENERALES

El presente catálogo sirve para pedir con exactitud las partes de repuesto

En los pedidos se debe indicar:

1) el número de código de la parte y a continuación la descripción cantidad deseada;

2) El código alfanumerico presente en la segnada columna de la tabla;

Los diseños de las partes de recambio son solo indicativos y no representan la pieza en cuestión.

Los datos contenidos en el presente catálogo son indicativos y pueden modificarse sin aviso previo.

INFORMATIONS GENERALES

Ce catalogue permet de commander correctement les pièces détachées

Les commandes doivent être passées en indiquant:

1) le numero de code des pièces détachées suivi de leur description quantité désirée;

2) le code alphanumérique dans la deuxième colonne du tableau;

Les plans des pièces détachées sont fournis seulement à titre indicatif et ne représentent pas la pièce concernée.

Les données de ce catalogue sont citées seulement à titre indicatif et peuvent être l'objet de modifications sans avis préalable.

ESEMPIO
EXAMPLE
EXEMPLE
BEISPIEL

| Rif. | Codici |
|--------------------|---------|
| MODULE:Particolari | |
| 10505 | 540903 |
| 10510 | 540908 |
| 10515 | 15065/A |
| 10520 | 540086 |
| 10525 | 540028 |

Note

Tutte le informazioni riportate si intendono aggiornate alla data di stampa. Il Produttore si riserva il diritto di apportare qualsiasi modifica richiesta dallo sviluppo evolutivo dei suddetti prodotti.

Per la sicurezza, la garanzia, l'affidabilità ed il valore della lavastoviglie usa solo ricambi originali. **Per alcuni codici, sono richieste quantità minime d'ordine.**

Attenzione

Questo libretto è parte integrante della lavastoviglie e, in caso di passaggio di proprietà, deve essere consegnato al nuovo acquirente.

Remarque

Toutes les informations contenues dans ce manuel s'entendent mises à jour à la date d'impression. En raison du développement constant de ses produits, usine se réserve le droit d'apporter à tout instant les modifications qu'elle jugera utiles.

Pour la sécurité, la garantie, la fiabilité et la valeur de votre lavevaisselles n'utilisez que des pièces de rechange d'origine. **Pour quelque référence on demande un minimum de pièces par commande**

Attention

Ce manuel doit être considéré comme partie intégrante de la lavevaisselles, en cas de transfert de propriété, doit toujours être remis au nouveau propriétaire.

Note

The information contained herein is valid at the time of going to print. The Company reserves the right to make any changes required by the future development of the above-mentioned products.

For your safety, as well as to preserve the warranty reliability and worth of your dishwashers, use original spare parts only. **For some codes a minimum quantity for order is required.**

Warning

This manual forms an integral part of the dishwashers and - if a transfer of title occurs - must always be handed over to the new owner.

Hinweis

Die Der Hersteller behält sich das Recht vor, jegliche, durch eine Weiterentwicklung der genannten Produkte bedingte Änderungen vornehmen zu können.

Verwenden Sie für Ihre Sicherheit, die Garantie, die Zuverlässigkeit und den Wert Ihrer machine originale Ersatzteile. **Für bestimmte Code nummer werden mindesten bestellungen verlangt.**

Achtung

Diese Betriebsanleitung ist Bestandteil des machine und muss bei seinem Weiterverkauf dem neuen Besitzer ausgehändigt werden.

vsezip.ru
+7(812)987-08-81

Code 999XXYYYY **CL/Part**

Model DESCRIPTION

S/N 04012345 **Type**

400VAC3N 50HZ 8A
3500W 500W

16A

IPX3

Pressione Dinamica alimentazione idrica **200-500**
 Pression dynamique arrivée d'eau
 Dynamic pressure water supply
 Dynamischer Druck assereinlauf

Pressione dinamica vapore saturo
 Pression dynamique vapeur saturée
 Dymanscher Druck gesattigter Dampf
 Pression Dinamica Vapor Saturado

TECHICAL SPECIFICATION

MADE IN ITALY

Temperatura massima acqua in ingresso **60°C**
 Temperature max eau a l'entre
 Maximale Temperatur Wasseranschluß
 Maximum Water temperature in-feeding

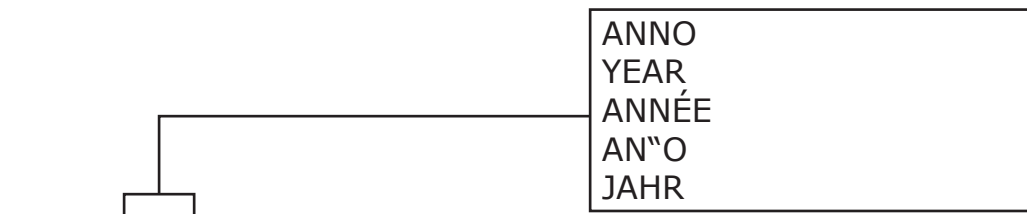
Model

S/N



FAMIGLIA PRODOTTO
 FAMILY PRODUCT
 FAMILLE DU PRODUIT
 FAMILIA PRODUCTO
 FAMILIE DES PRODUKTES

CODICE MODELLO
 CODE MODEL
 CODE ARTICLE
 CODIGO MODELO
 KODE VON MODELL



ANNO
 YEAR
 ANNÉE
 AN"O
 JAHR

NUMERO DI SERIE
 SERIAL NUMBER
 NUMÉRO DI SÉRIE
 NUMERO DI SERIE
 SERIENNUMMER

Spare parts

Зип Общепит

vsezip.ru

+7(812)987-08-81

vsezip.ru

+7(812)987-08-81

1. Spare parts

| | |
|----------------------------------|----|
| General body parts..... | 5 |
| General body parts..... | 9 |
| Lockup system | 13 |
| Control panel and switches..... | 15 |
| Electric control components..... | 17 |
| Solenoid valve group | 19 |
| Solenoid valve group | 21 |
| Solenoid valve group | 23 |
| Break Tank | 25 |
| Booster pump..... | 27 |
| DVGW | 29 |
| Water softner group..... | 31 |
| Rinse aid dispenser group..... | 33 |
| Boiler group | 35 |
| 3 ways connection | 37 |
| 3 ways connection | 39 |

Wash pump 41

Dosing detergent group 43

Drain pump group 45

Pressure switch group with air trap ... 47

Turret group with rotating arms 49

1.1 Voltage codes

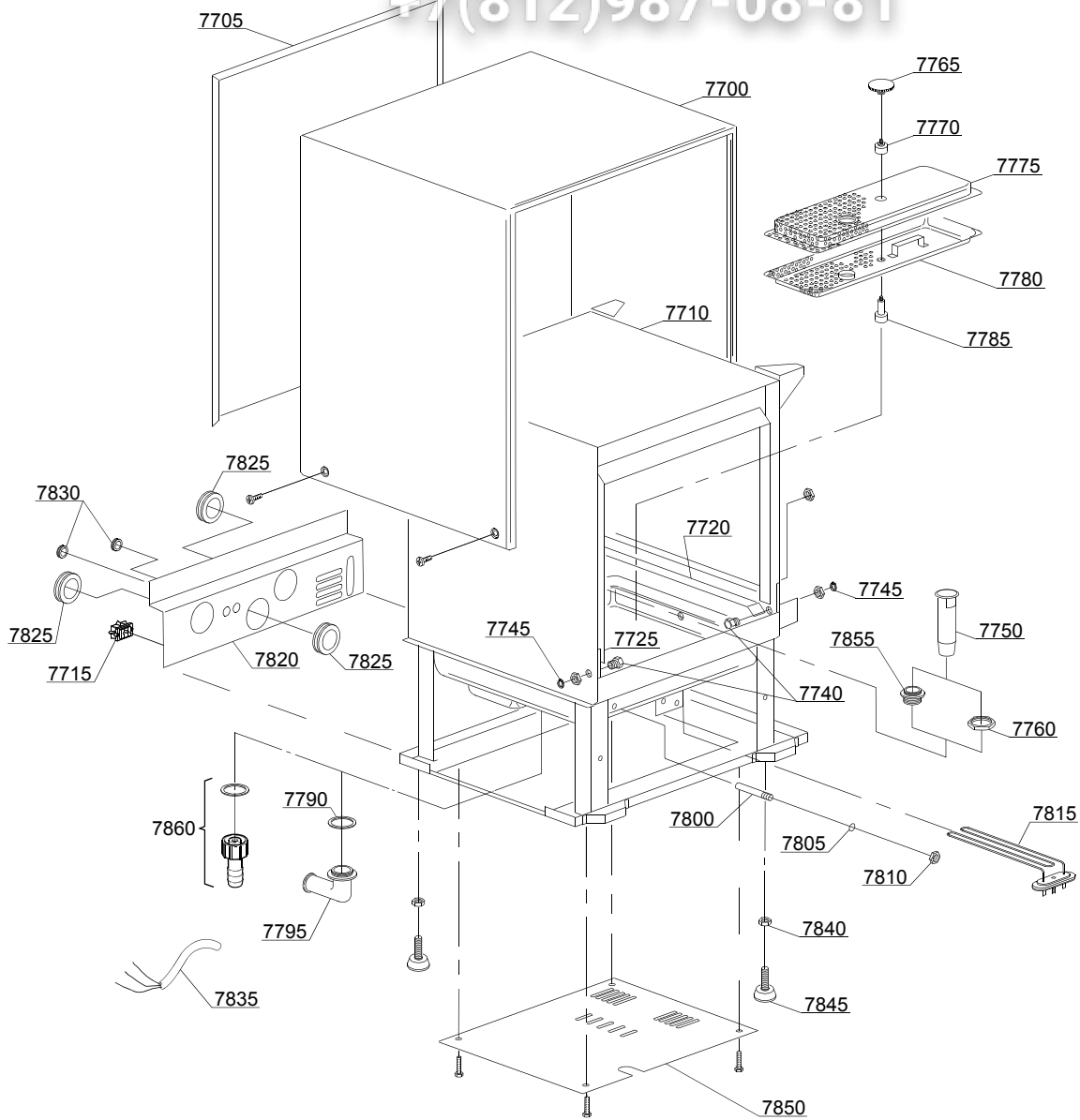
| Volt | Voltage code |
|------|-------------------------|
| A | 3/N/PE~380-400V 50-60Hz |
| D | 3/PE~200-210V 50-60Hz |
| F | 2/PE~220-240V 50-60Hz |
| G | 3/N/PE~415V 50-60Hz |
| H | 3/PE~220-230V 50-60Hz |
| K | 3/PE~380-400V 50-60Hz |
| L | 3/PE~415V 50-60Hz |
| M | 3/PE~440V 60Hz |
| P | 1/N/PE~220-230V 50-60Hz |
| R | 2/PE~220-240V 50-60Hz |
| U | 1/N/PE~240V 50-60Hz |
| V | 3/PE~240V 50-60Hz |
| W | 1/N/PE~100-110V 50-60Hz |

1.2 Product codes

| Product code | Full name |
|-----------------|----------------------------|
| Model codes | |
| em | ELECTROMECHANICAL SWITCHES |
| uw | LOWER AND UPPER WASHING |
| Type codes | |
| 7U | 7U |
| Accessory codes | |
| bt | BREAK TANK |
| bp | BOOSTER PUMP |
| dvgw | DVGW |
| cr | COLD RINSE |
| ws | WATER SOFTNER |
| dd | DETERGENT DISPENSER |
| dp | DRAIN PUMP |

vsezip.ru

+7(812)987-08-81



01_010_e

| ID | P-code | SN from | SN to | Mod | Acces. | Volt | Description |
|----------------------------------|---------|---------|-------|-----|--------|------|--|
| Module:General body parts | | | | | | | |
| 7700 | 26024 | | - | | | | Cover |
| 7705 | 26110 | | - | | | | Back panel |
| 7710 | 26915 | | - | | | | Body |
| 7710 | 26914 | | - | | ws | | Body |
| 7715 | 15065/A | | - | | | | Cable-fastener with screw |
| 7720 | 26015 | | - | | | | Right internal slide |
| 7725 | 26016 | | - | | | | Left internal slide |
| 7740 | 11835 | | - | | | | Brass bush with nut |
| 7745 | 11815 | | - | | | | Ø8 stainless steel snap ring (minimum 5 pieces) |
| 7750 | 15126 | | - | | | | Overflow pipe |
| 7750 | 150320 | | - | | dp | | Overflow pipe |
| 7760 | 11701/A | | - | | | | Stainless steel nut |
| 7765 | 15209/A | | - | | dp | | Ring nut for filter fixing |
| 7775 | 15932 | | - | | | | Top filter assembly |
| 7785 | 15105 | | - | | | | Compleat steel lock-filter |
| 7790 | 13305 | | - | | | | 44x32x3 O-ring (minimum 5 pieces) |
| 7795 | 10701 | | - | | | | Drain elbow |
| 7800 | 12510 | | - | | | | Thermostat feeler-holder |
| 7805 | 13309 | | - | | | | 10x14x1,5 O-ring (minimum 20 pieces) |
| 7810 | 11714 | | - | | | | M10x1 stainless steel nut for thermostat feeler-holder |
| 7815 | 16035/A | | - | | | | 2,18/2,37KW 230/240V 50Hz heating element |
| 7820 | 26112 | | - | | | | End piece protection |
| 7825 | 13317 | | - | | | | D.40mm unloading pipe pass (minimum 2 pieces) |
| 7830 | 13323 | | - | | | | D.13mm dosing pipe pass (minimum 2 pieces) |
| 7835 | 15118 | | - | | | | 5x2,5x2500 cable |
| 7835 | 15145 | | - | | | | 4x4x2500 cable |
| 7835 | 10713 | | - | | | | 3x2,5x2500 cable |
| 7840 | 11711 | | - | | | | M10 zinc plated nut (minimum 20 pieces) |

em=ELECTROMECHANICAL SWITCHES, uw=LOWER AND UPPER WASHING

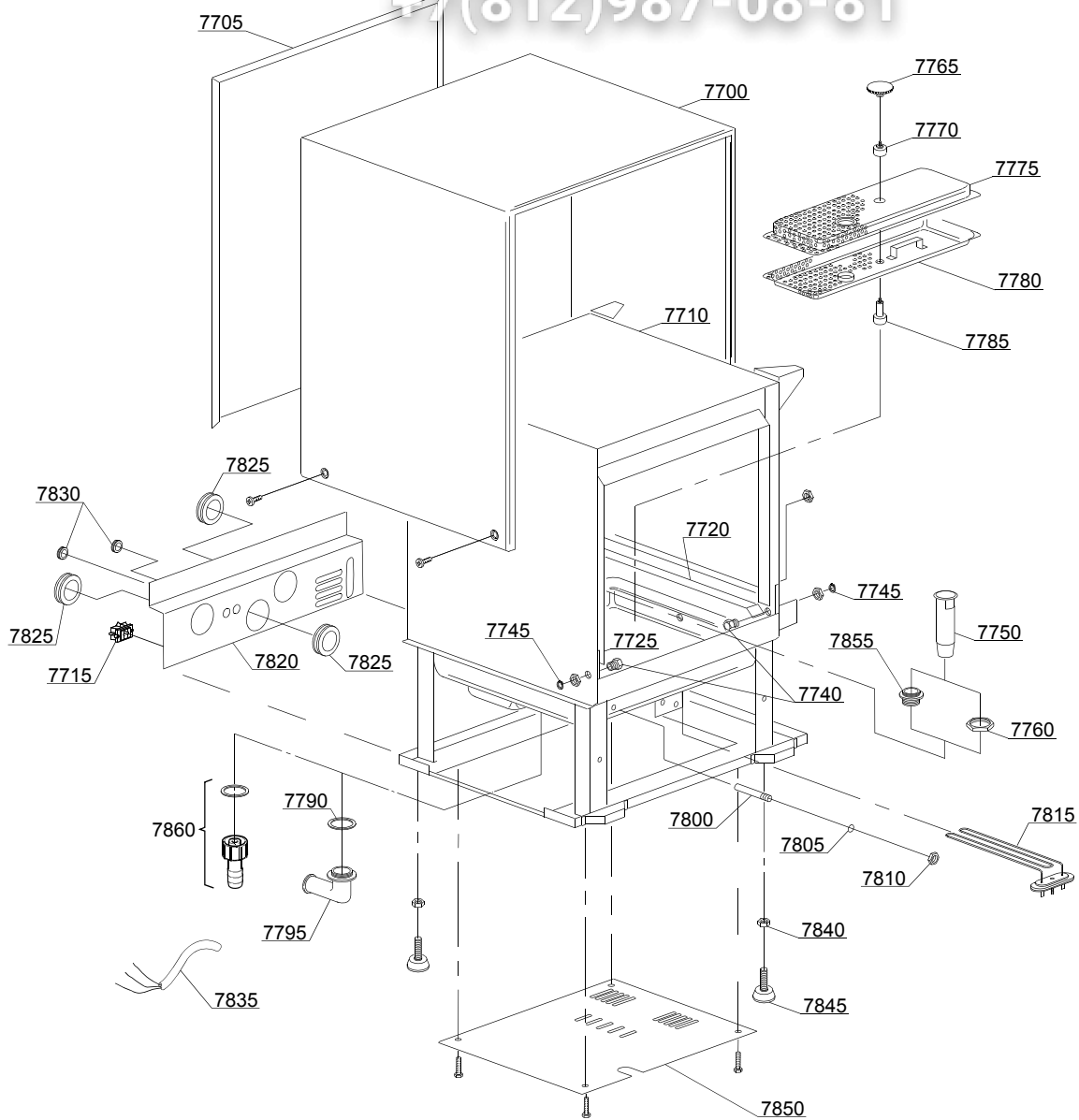
7U=7U

bt=BREAK TANK, bp=BOOSTER PUMP, dvgw=DVGW, cr=COLD RINSE, ws=WATER SOFTNER, dd=DETERGENT DISPENSER, dp=DRAIN PUMP

A=3/N/PE~380-400V 50-60Hz, D=3/PE~200-210V 50-60Hz, F=2/PE~220-240V 50-60Hz, G=3/N/PE~415V 50-60Hz, H=3/PE~220-230V 50-60Hz, K=3/PE~380-400V 50-60Hz, L=3/PE~415V 50-60Hz, M=3/PE~440V 60Hz, P=1/N/PE~220-230V 50-60Hz, R=2/PE~220-240V 50-60Hz, U=1/N/PE~240V 50-60Hz, V=3/PE~240V 50-60Hz, W=1/N/PE~100-110V 50-60Hz

vsezip.ru

+7(812)987-08-81



01_010_e

vsezip.ru

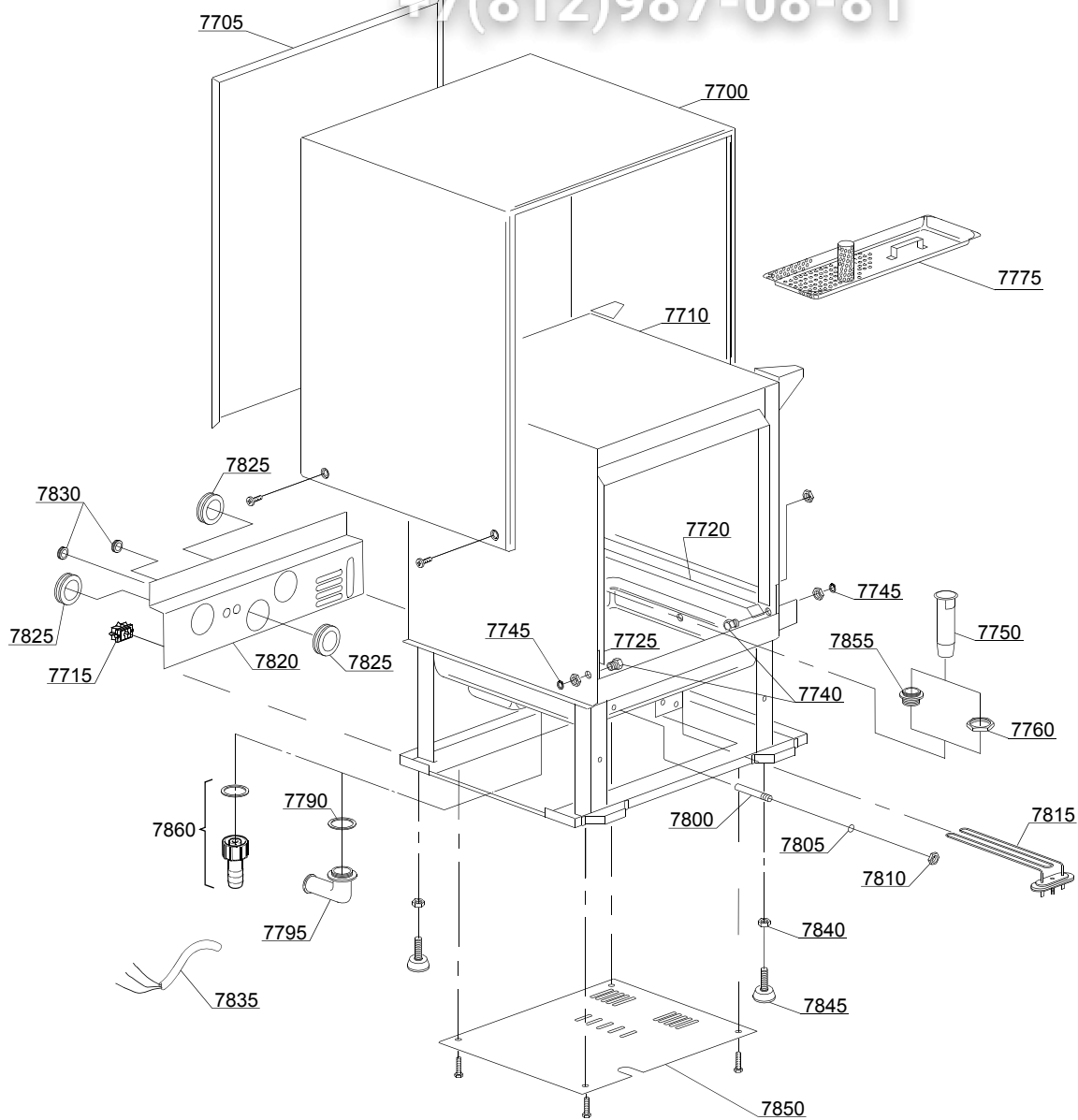
| ID | P-code | SN from | SN to | Mod. | Acces. | Volt | Description |
|----------------------------------|---------|---------|-------|------|--------|------|--|
| Module:General body parts | | | | | | | |
| 7845 | 10786 | | - | | | | M10x25 Ø40 black foot (minimum 4 pieces) |
| 7850 | 26111 | | - | | | | End piece protection |
| 7855 | 15063 | | - | | dp | | Steel floor drain |
| 7860 | 15613/A | | - | | dp | | Straight hold rubber |

em=ELECTROMECHANICAL SWITCHES, uw=LOWER AND UPPER WASHING

7U=7U

bt=BREAK TANK, bp=BOOSTER PUMP, dvgw=DVGW, cr=COLD RINSE, ws=WATER SOFTNER, dd=DETERGENT DISPENSER, dp=DRAIN PUMP

A=3/N/PE~380-400V 50-60Hz, D=3/PE~200-210V 50-60Hz, F=2/PE~220-240V 50-60Hz, G=3/N/PE~415V 50-60Hz, H=3/PE~220-230V 50-60Hz, K=3/PE~380-400V 50-60Hz, L=3/PE~415V 50-60Hz, M=3/PE~440V 60Hz, P=1/N/PE~220-230V 50-60Hz, R=2/PE~220-240V 50-60Hz, U=1/N/PE~240V 50-60Hz, V=3/PE~240V 50-60Hz, W=1/N/PE~100-110V 50-60Hz



01_036_e

| ID | P-code | SN from | SN to | Mod | Acces. | Volt | Description |
|----------------------------------|---------|---------|-------|-----|--------|------|--|
| Module:General body parts | | | | | | | |
| 7700 | 26024 | | - | | | | Cover |
| 7705 | 26110 | | - | | | | Back panel |
| 7710 | 26915 | | - | | | | Body |
| 7710 | 26914 | | - | | ws | | Body |
| 7715 | 15065/A | | - | | | | Cable-fastener with screw |
| 7720 | 26015 | | - | | | | Right internal slide |
| 7725 | 26016 | | - | | | | Left internal slide |
| 7740 | 11835 | | - | | | | Brass bush with nut |
| 7745 | 11815 | | - | | | | Ø8 stainless steel snap ring (minimum 5 pieces) |
| 7750 | 15126 | | - | | | | Overflow pipe |
| 7750 | 150320 | | - | | dp | | Overflow pipe |
| 7760 | 11701/A | | - | | | | Stainless steel nut |
| 7775 | 26970 | | - | | | | Filter |
| 7790 | 13305 | | - | | | | 44x32x3 O-ring (minimum 5 pieces) |
| 7795 | 10701 | | - | | | | Drain elbow |
| 7800 | 12510 | | - | | | | Thermostat feeler-holder |
| 7805 | 13309 | | - | | | | 10x14x1,5 O-ring (minimum 20 pieces) |
| 7810 | 11714 | | - | | | | M10x1 stainless steel nut for thermostat feeler-holder |
| 7815 | 16035/A | | - | | | | 2,18/2,37KW 230/240V 50Hz heating element |
| 7820 | 26112 | | - | | | | End piece protection |
| 7825 | 13317 | | - | | | | D.40mm unloading pipe pass (minimum 2 pieces) |
| 7830 | 13323 | | - | | | | D.13mm dosing pipe pass (minimum 2 pieces) |
| 7835 | 15118 | | - | | | | 5x2,5x2500 cable |
| 7835 | 15145 | | - | | | | 4x4x2500 cable |
| 7835 | 10713 | | - | | | | 3x2,5x2500 cable |
| 7840 | 11711 | | - | | | | M10 zinc plated nut (minimum 20 pieces) |
| 7845 | 10786 | | - | | | | M10x25 Ø40 black foot (minimum 4 pieces) |
| 7850 | 26111 | | - | | | | End piece protection |

em=ELECTROMECHANICAL SWITCHES, uw=LOWER AND UPPER WASHING

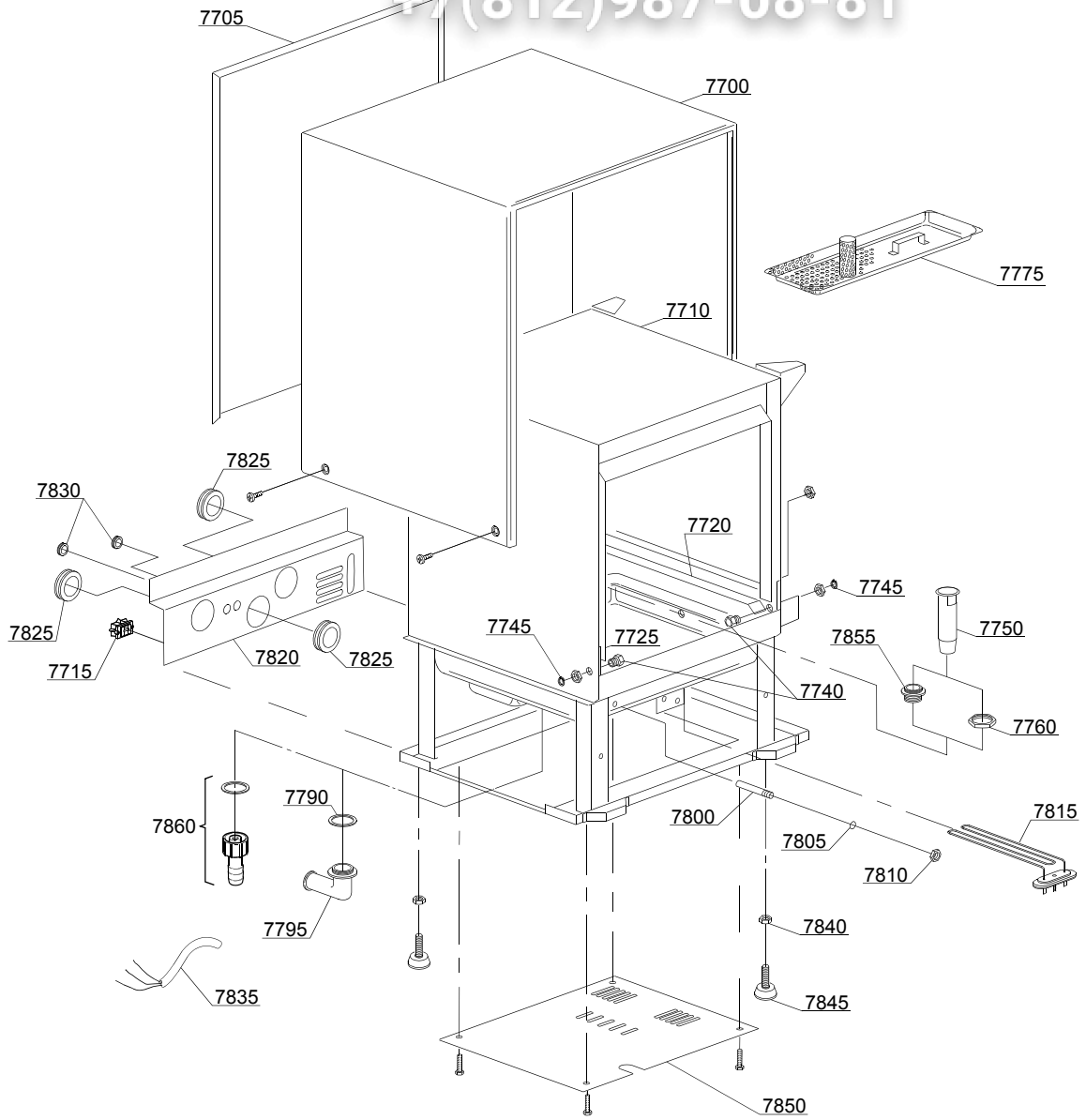
7U=7U

bt=BREAK TANK, bp=BOOSTER PUMP, dvgw=DVGW, cr=COLD RINSE, ws=WATER SOFTNER, dd=DETERGENT DISPENSER, dp=DRAIN PUMP

A=3/N/PE~380-400V 50-60Hz, D=3/PE~200-210V 50-60Hz, F=2/PE~220-240V 50-60Hz, G=3/N/PE~415V 50-60Hz, H=3/PE~220-230V 50-60Hz, K=3/PE~380-400V 50-60Hz, L=3/PE~415V 50-60Hz, M=3/PE~440V 60Hz, P=1/N/PE~220-230V 50-60Hz, R=2/PE~220-240V 50-60Hz, U=1/N/PE~240V 50-60Hz, V=3/PE~240V 50-60Hz, W=1/N/PE~100-110V 50-60Hz

vsezip.ru

+7(812)987-08-81



01_036_e

vsezip.ru

| ID | P-code | SN from | SN to | Mod. | Acces. | Volt | Description |
|----------------------------------|---------|---------|-------|------|--------|------|----------------------|
| Module:General body parts | | | | | | | |
| 7855 | 15063 | | - | | dp | | Steel floor drain |
| 7860 | 15613/A | | - | | dp | | Straight hold rubber |

em=ELECTROMECHANICAL SWITCHES, uw=LOWER AND UPPER WASHING

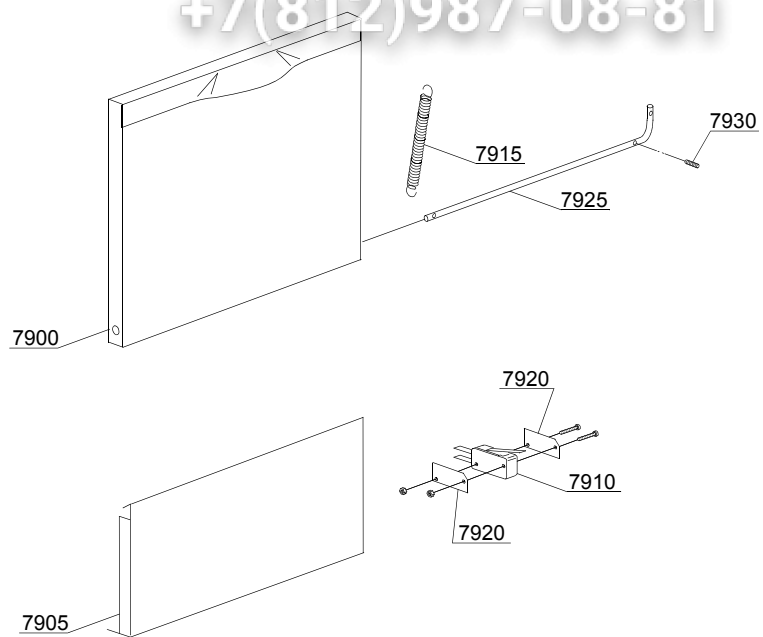
7U=7U

bt=BREAK TANK, bp=BOOSTER PUMP, dvgw=DVGW, cr=COLD RINSE, ws=WATER SOFTNER, dd=DETERGENT DISPENSER, dp=DRAIN PUMP

A=3/N/PE~380-400V 50-60Hz, D=3/PE~200-210V 50-60Hz, F=2/PE~220-240V 50-60Hz, G=3/N/PE~415V 50-60Hz, H=3/PE~220-230V 50-60Hz, K=3/PE~380-400V 50-60Hz, L=3/PE~415V 50-60Hz, M=3/PE~440V 60Hz, P=1/N/PE~220-230V 50-60Hz, R=2/PE~220-240V 50-60Hz, U=1/N/PE~240V 50-60Hz, V=3/PE~240V 50-60Hz, W=1/N/PE~100-110V 50-60Hz

vsezip.ru

+7(812)987-08-81



02_107_e

vsezip.ru

| ID | P-code | SN from | SN to | Mod | Acces. | Volt | Description |
|------------------------------|---------|---------|-------|-----|--------|------|--|
| Module: Lockup system | | | | | | | |
| 7900 | 26964 | | - | | | | Door with steel handle |
| 7905 | 26025 | | - | | | | Lower door |
| 7910 | 10704 | | - | | | | Door microswitch |
| 7915 | 10700/A | | - | | | | Spring |
| 7920 | 10770 | | - | | | | Insulation for door microswitch (minimum 3 pieces) |
| 7925 | 26009 | | - | | | | Door rod |
| 7930 | 11501 | | - | | | | M5x20 grub-screw (minimum 2 pieces) |

em=ELECTROMECHANICAL SWITCHES, uw=LOWER AND UPPER WASHING

7U=7U

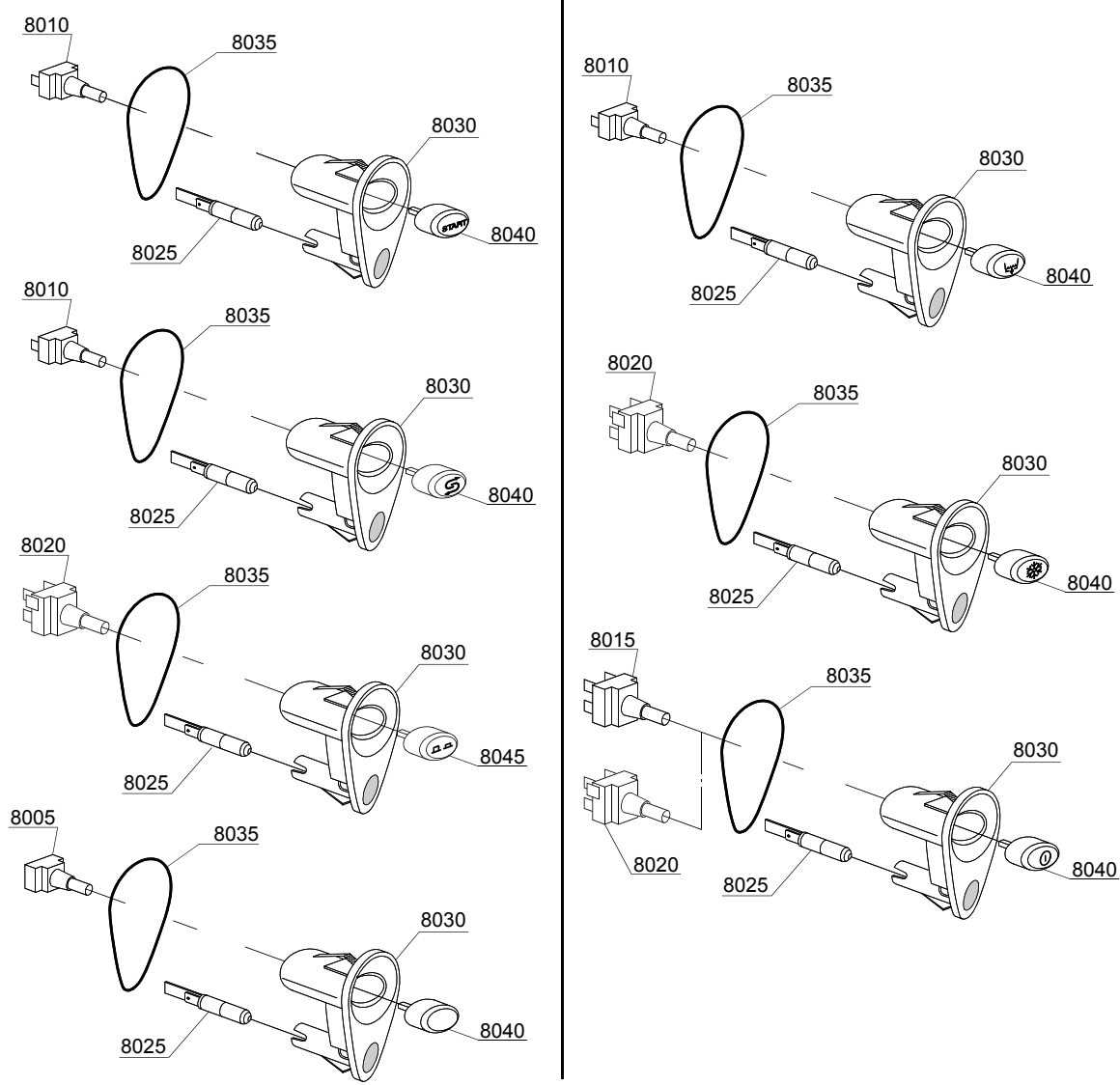
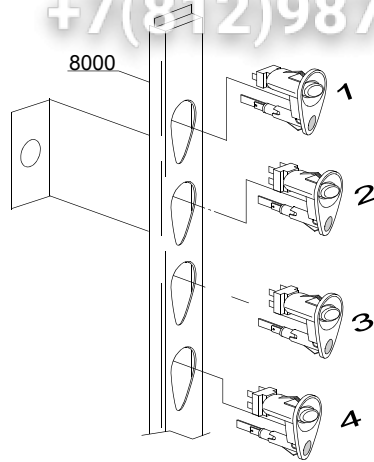
bt=BREAK TANK, bp=BOOSTER PUMP, dvgw=DVGW, cr=COLD RINSE, ws=WATER SOFTNER, dd=DETERGENT DISPENSER, dp=DRAIN PUMP

A=3/N/PE~380-400V 50-60Hz, D=3/PE~200-210V 50-60Hz, F=2/PE~220-240V 50-60Hz, G=3/N/PE~415V 50-60Hz, H=3/PE~220-230V 50-60Hz, K=3/PE~380-400V 50-60Hz, L=3/PE~415V 50-60Hz, M=3/PE~440V 60Hz, P=1/N/PE~220-230V 50-60Hz, R=2/PE~220-240V 50-60Hz, U=1/N/PE~240V 50-60Hz, V=3/PE~240V 50-60Hz, W=1/N/PE~100-110V 50-60Hz

vsezip.ru

+7(812)987-08-81

03_015be



vsezip.ru

| ID | P-code | SN from | SN to | Mod. | Acces | Volt | Description |
|--|--------|---------|-------|------|-------|------|-------------------------------|
| Module:Control panel and switches | | | | | | | |
| 8000 | 26963 | | - | em | | | Control panel |
| 8005 | 15844 | | - | em | | | Push button support |
| 8010 | 15813 | | - | em | | | 16A unipolar switch |
| 8015 | 15812 | | - | em | | | 16A switch |
| 8025 | 15826 | | - | em | | | Pilot light 220V |
| 8030 | 89300 | | - | em | | | Push button support |
| 8035 | 89332 | | - | em | | | OR O-ring (minimum 10 pieces) |
| 8040 | 89344 | | - | em | cr | | Hot/cold push button |
| 8040 | 89341 | | - | em | | | Start push button |
| 8040 | 89348 | | - | em | | | Blind push button |
| 8040 | 89340 | | - | em | | | ON-OFF push button |
| 8040 | 89345 | | - | em | ws | | Regeneration push button |

em=ELECTROMECHANICAL SWITCHES, uw=LOWER AND UPPER WASHING

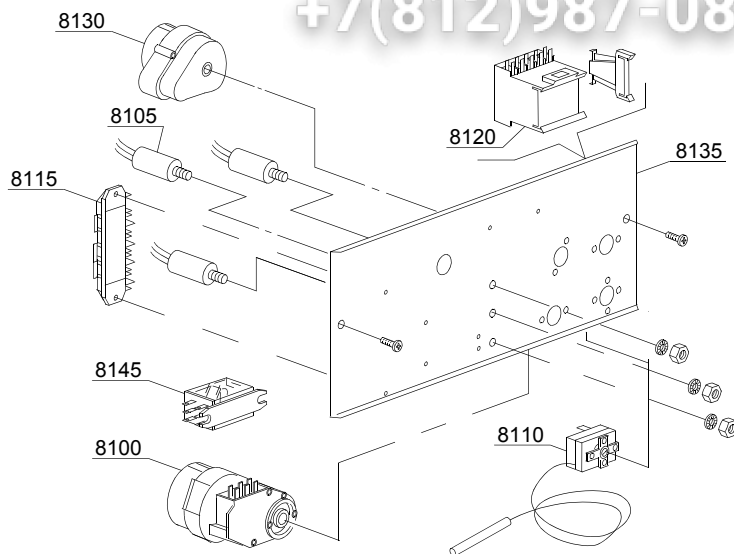
7U=7U

bt=BREAK TANK, bp=BOOSTER PUMP, dvgw=DVGW, cr=COLD RINSE, ws=WATER SOFTNER, dd=DETERGENT DISPENSER, dp=DRAIN PUMP

A=3/N/PE~380-400V 50-60Hz, D=3/PE~200-210V 50-60Hz, F=2/PE~220-240V 50-60Hz, G=3/N/PE~415V 50-60Hz, H=3/PE~220-230V 50-60Hz, K=3/PE~380-400V 50-60Hz, L=3/PE~415V 50-60Hz, M=3/PE~440V 60Hz, P=1/N/PE~220-230V 50-60Hz, R=2/PE~220-240V 50-60Hz, U=1/N/PE~240V 50-60Hz, V=3/PE~240V 50-60Hz, W=1/N/PE~100-110V 50-60Hz

vsezip.ru

+7(812)987-08-81



04_009_e

vsezip.ru

| ID | P-code | SN from | SN to | Mod. | Acces | Volt | Description |
|--|---------|---------|-------|------|-------|------|--|
| Module: Electric control components | | | | | | | |
| 8100 | 10708/L | | - | | | A | 120" timer - 230Vac 50Hz |
| 8100 | 10708/B | | - | | | | 120" timer - 220Vac 60Hz |
| 8100 | 10708/T | | - | | | | Timer 120" with thermostop - 230Vac 50Hz |
| 8105 | 15149 | | - | | | | Low noise filter |
| 8110 | 10707/1 | | - | | | | 0-90°C thermostat |
| 8115 | 500551 | | - | | | | 6 poles terminal board |
| 8115 | 500550 | | - | | | | 3 poles terminal board |
| 8120 | 15086 | | - | | | | Contactora 230V 50/60Hz 4C |
| 8120 | 15086/B | | - | | | | Contactora 240V 50Hz |
| 8130 | 16064/A | | - | | ws | | Regeneration timer |
| 8135 | 26115 | | - | | | | Electric components panel |
| 8145 | 15620 | | - | | | | 16A bipolar relay in deviation |

em=ELECTROMECHANICAL SWITCHES, uw=LOWER AND UPPER WASHING

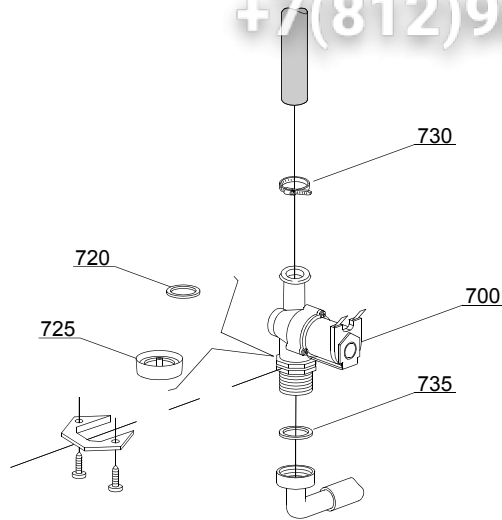
7U=7U

bt=BREAK TANK, bp=BOOSTER PUMP, dvgw=DVGW, cr=COLD RINSE, ws=WATER SOFTNER, dd=DETERGENT DISPENSER, dp=DRAIN PUMP

A=3/N/PE~380-400V 50-60Hz, D=3/PE~200-210V 50-60Hz, F=2/PE~220-240V 50-60Hz, G=3/N/PE~415V 50-60Hz, H=3/PE~220-230V 50-60Hz, K=3/PE~380-400V 50-60Hz, L=3/PE~415V 50-60Hz, M=3/PE~440V 60Hz, P=1/N/PE~220-230V 50-60Hz, R=2/PE~220-240V 50-60Hz, U=1/N/PE~240V 50-60Hz, V=3/PE~240V 50-60Hz, W=1/N/PE~100-110V 50-60Hz

vsezip.ru

+7(812)987-08-81



05_002_e

| ID | P-code | SN from | SN to | Mod. | Acces | Volt | Description |
|------------------------------------|--------|---------|-------|------|-------|------|--------------------------------|
| Module:Solenoid valve group | | | | | | | |
| 700 | 10703 | | - | em | | | Single solenoid valve - 230Vac |
| 720 | N.C. | | - | em | | | Pression reducing valve |
| 730 | 11807 | | - | em | | | 12/22 clamp (minimum 3 pieces) |
| 735 | 13307 | | - | em | | | 3/4 gasket |

em=ELECTROMECHANICAL SWITCHES, uw=LOWER AND UPPER WASHING

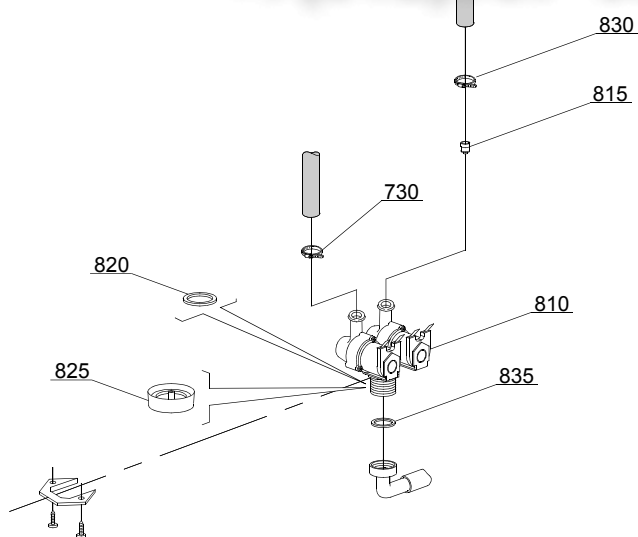
7U=7U

bt=BREAK TANK, bp=BOOSTER PUMP, dvgw=DVGW, cr=COLD RINSE, ws=WATER SOFTNER, dd=DETERGENT DISPENSER, dp=DRAIN PUMP

A=3/N/PE~380-400V 50-60Hz, D=3/PE~200-210V 50-60Hz, F=2/PE~220-240V 50-60Hz, G=3/N/PE~415V 50-60Hz, H=3/PE~220-230V 50-60Hz, K=3/PE~380-400V 50-60Hz, L=3/PE~415V 50-60Hz, M=3/PE~440V 60Hz, P=1/N/PE~220-230V 50-60Hz, R=2/PE~220-240V 50-60Hz, U=1/N/PE~240V 50-60Hz, V=3/PE~240V 50-60Hz, W=1/N/PE~100-110V 50-60Hz

vsezip.ru

+7(812)987-08-81



05_003_€

vsezip.ru

| ID | P-code | SN from | SN to | Mod. | Acces. | Volt | Description |
|------------------------------------|--------|---------|-------|------|--------|------|--------------------------------------|
| Module:Solenoid valve group | | | | | | | |
| 810 | 15098 | | - | em | cr,ws | | Double solenoid valve - Ø10 - 230Vac |
| 820 | N.C. | | - | em | cr,ws | | Pression reducing valve |
| 830 | 11807 | | - | em | | | 12/22 clamp (minimum 3 pieces) |
| 835 | 13307 | | - | em | | | 3/4 gasket |

em=ELECTROMECHANICAL SWITCHES, uw=LOWER AND UPPER WASHING

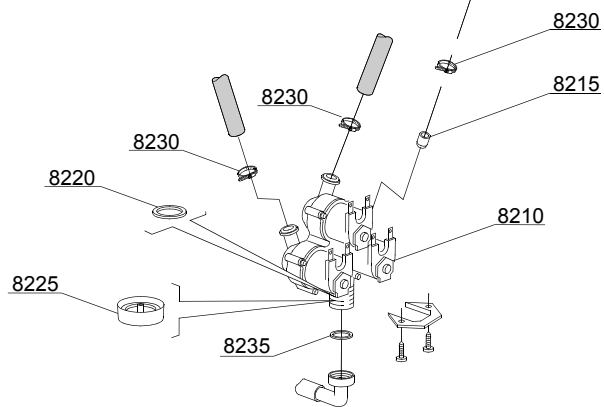
7U=7U

bt=BREAK TANK, bp=BOOSTER PUMP, dvgw=DVGW, cr=COLD RINSE, ws=WATER SOFTNER, dd=DETERGENT DISPENSER, dp=DRAIN PUMP

A=3/N/PE~380-400V 50-60Hz, D=3/PE~200-210V 50-60Hz, F=2/PE~220-240V 50-60Hz, G=3/N/PE~415V 50-60Hz, H=3/PE~220-230V 50-60Hz, K=3/PE~380-400V 50-60Hz, L=3/PE~415V 50-60Hz, M=3/PE~440V 60Hz, P=1/N/PE~220-230V 50-60Hz, R=2/PE~220-240V 50-60Hz, U=1/N/PE~240V 50-60Hz, V=3/PE~240V 50-60Hz, W=1/N/PE~100-110V 50-60Hz

vsezip.ru

+7(812)987-08-81



05_004_ε

vsezip.ru

| ID | P-code | SN from | SN to | Mod. | Acces. | Volt | Description |
|------------------------------------|--------|---------|-------|------|--------|------|--|
| Module:Solenoid valve group | | | | | | | |
| 8210 | 15099 | | - | | cr,ws | | Triple solenoid valve |
| 8215 | 15115 | | - | | cr,ws | | Green pression solenoid valve (minimum 2 pieces) |
| 8220 | N.C. | | - | | cr,ws | | Pression reducing valve |
| 8230 | 11807 | | - | em | | | 12/22 clamp (minimum 3 pieces) |
| 8235 | 13307 | | - | em | | | 3/4 gasket |

em=ELECTROMECHANICAL SWITCHES, uw=LOWER AND UPPER WASHING

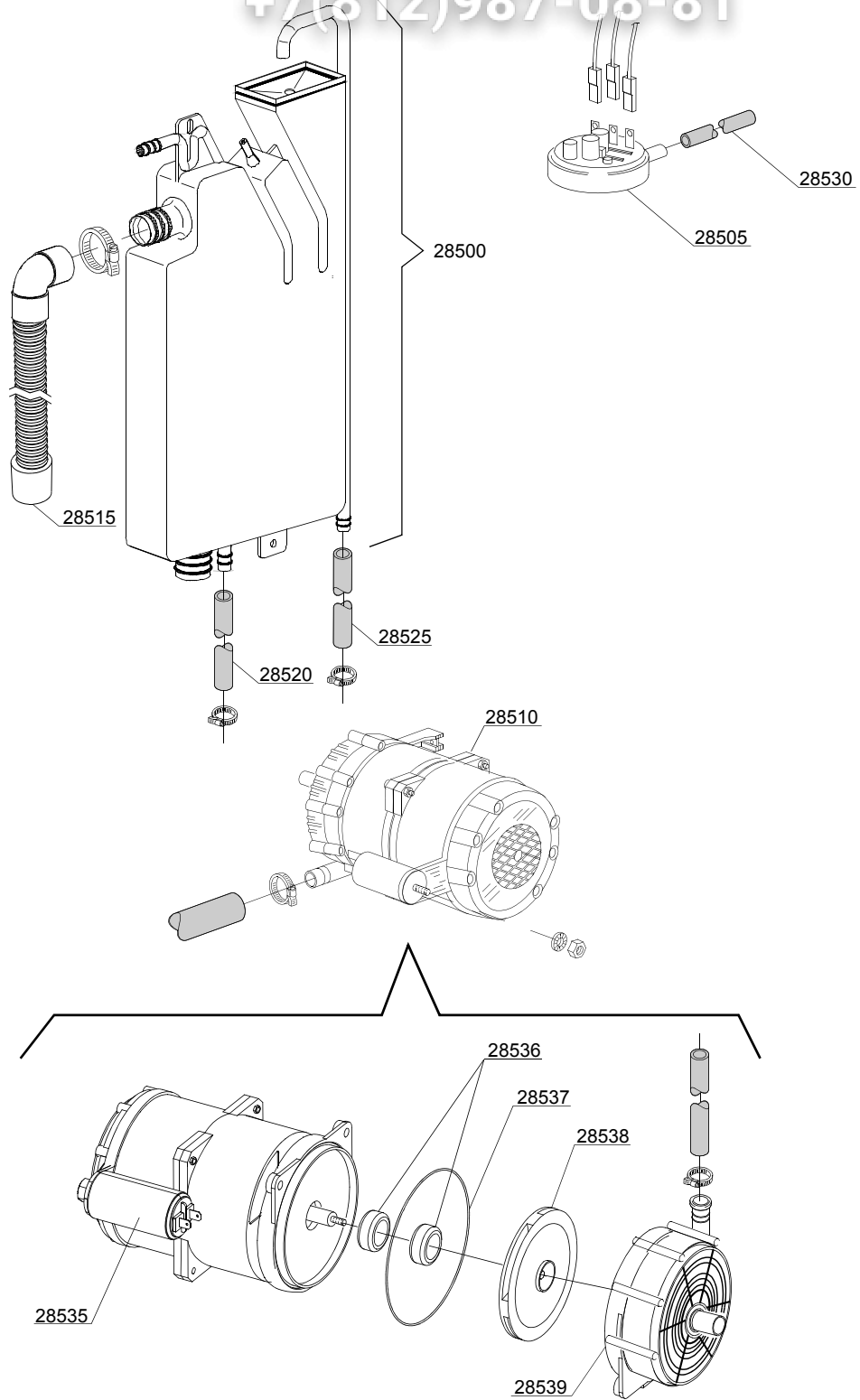
7U=7U

bt=BREAK TANK, bp=BOOSTER PUMP, dvgw=DVGW, cr=COLD RINSE, ws=WATER SOFTNER, dd=DETERGENT DISPENSER, dp=DRAIN PUMP

A=3/N/PE~380-400V 50-60Hz, D=3/PE~200-210V 50-60Hz, F=2/PE~220-240V 50-60Hz, G=3/N/PE~415V 50-60Hz, H=3/PE~220-230V 50-60Hz, K=3/PE~380-400V 50-60Hz, L=3/PE~415V 50-60Hz, M=3/PE~440V 60Hz, P=1/N/PE~220-230V 50-60Hz, R=2/PE~220-240V 50-60Hz, U=1/N/PE~240V 50-60Hz, V=3/PE~240V 50-60Hz, W=1/N/PE~100-110V 50-60Hz

vsezip.ru

+7(812)987-08-81



06_004ae

vsezip.ru

| ID | P-code | SN from | SN to | Mod. | Acces. | Volt | Description |
|--------------------------|---------|---------|-------|------|--------|------|---|
| Module:Break Tank | | | | | | | |
| 28500 | 15735 | | - | em | bt | | Break tank assembly |
| 28505 | 10706/A | | - | em | bt | | 47-27 pressure switch |
| 28510 | 15100/D | | - | em | bt | | Booster pump 220/240V - body pumps in plastic |
| 28515 | 15721 | | - | em | bt | | BT long pipe L=1070 |
| 28515 | 15722 | | - | em | bt | | BT middle pipe L=920 |
| 28515 | 15723 | | - | em | bt | | BT small pipe L=690 |
| 28520 | 2907350 | | - | em | bt | | 12x20 EPDM rubber hose |
| 28525 | 2907352 | | - | em | bt | | PVC WRAS rubber hose |
| 28530 | 14508 | | - | em | bt | | 4,5x9 EPDM rubber hose (minimum 2 mt) |
| 28535 | 10702 | | - | em | bt | | 5 uF condenser - 450V |
| 28536 | 15100/S | | - | em | bt | | Rotating seals |
| 28537 | 15100/T | | - | em | bt | | OR-(O-ring) gasket EPDM |
| 28538 | 15100/U | | - | em | bt | | Pump rotor |
| 28539 | 15100/V | | - | em | bt | | Scroll |

em=ELECTROMECHANICAL SWITCHES, uw=LOWER AND UPPER WASHING

7U=7U

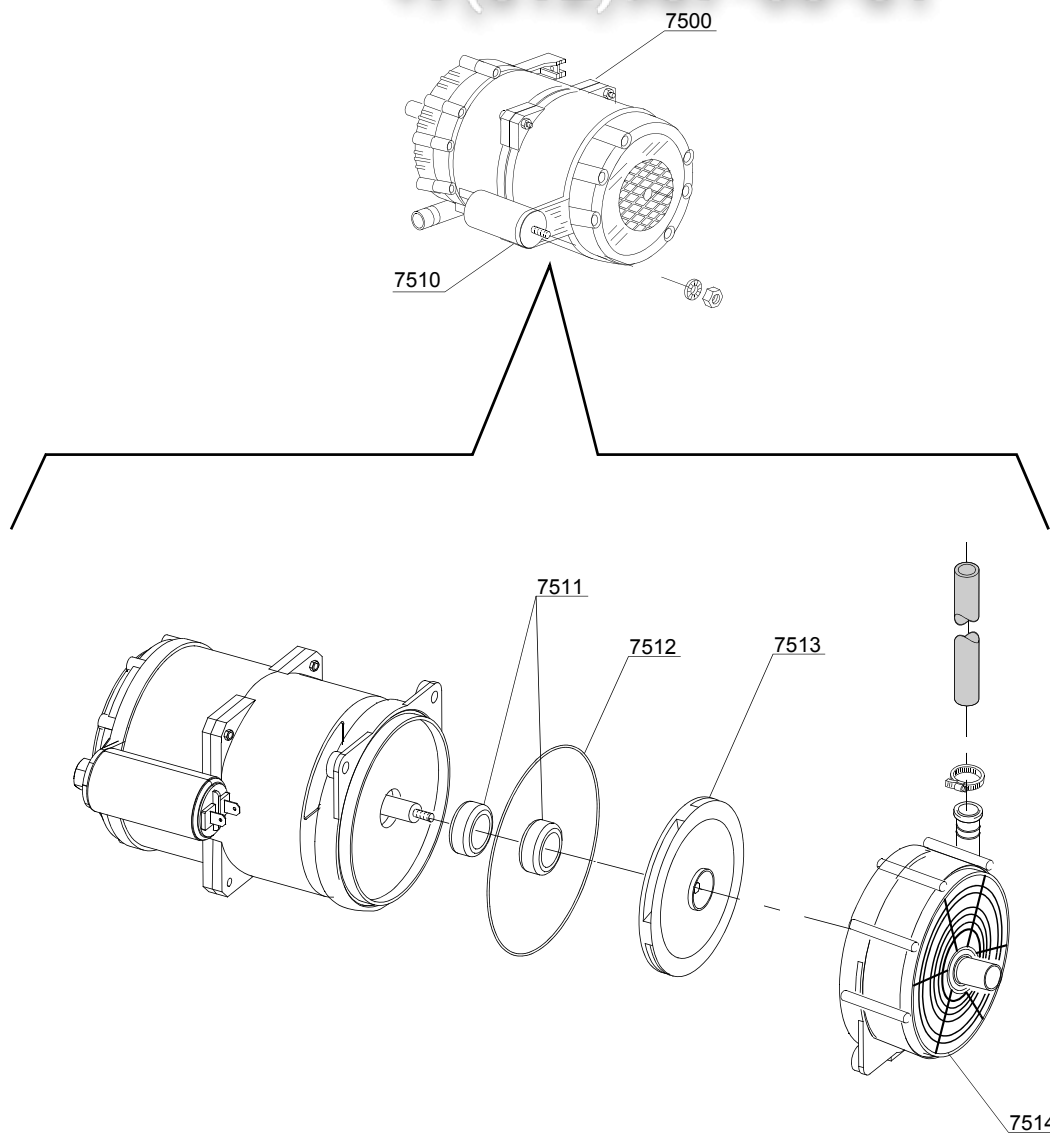
bt=BREAK TANK, bp=BOOSTER PUMP, dvgw=DVGW, cr=COLD RINSE, ws=WATER SOFTNER, dd=DETERGENT DISPENSER, dp=DRAIN PUMP

A=3/N/PE~380-400V 50-60Hz, D=3/PE~200-210V 50-60Hz, F=2/PE~220-240V 50-60Hz, G=3/N/PE~415V 50-60Hz, H=3/PE~220-230V 50-60Hz, K=3/PE~380-400V 50-60Hz, L=3/PE~415V 50-60Hz, M=3/PE~440V 60Hz, P=1/N/PE~220-230V 50-60Hz, R=2/PE~220-240V 50-60Hz, U=1/N/PE~240V 50-60Hz, V=3/PE~240V 50-60Hz, W=1/N/PE~100-110V 50-60Hz

vsezip.ru

+7(812)987-08-81

07_003_e



vsezip.ru

| ID | P-code | SN from | SN to | Mod. | Acces. | Volt | Description |
|----------------------------|---------|---------|-------|------|--------|------|---|
| Module:Booster pump | | | | | | | |
| 7500 | 15100/D | | - | em | bp | | Booster pump 220/240V - body pumps in plastic |
| 7505 | 12013 | | - | em | bp | | Rubber-holder |
| 7510 | 10702 | | - | em | bp | | 5 uF condenser - 450V |
| 7511 | 15100/S | | | em | bp | | Rotating seals |
| 7512 | 15100/T | | | em | bp | | OR (O-ring) gasket EPDM |
| 7513 | 15100/U | | | em | bp | | Pump rotor |
| 7514 | 15100/V | | | em | bp | | Scroll |

em=ELECTROMECHANICAL SWITCHES, uw=LOWER AND UPPER WASHING

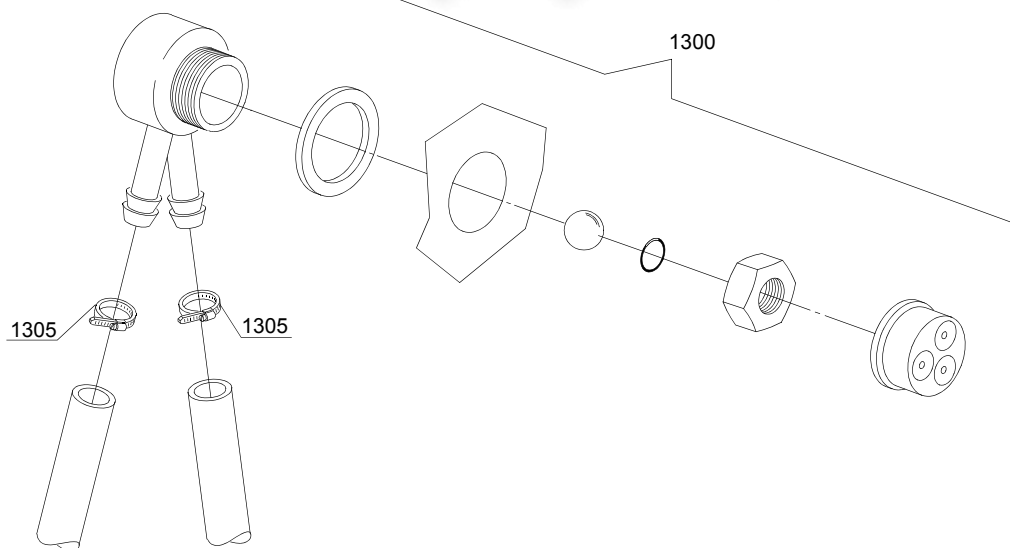
7U=7U

bt=BREAK TANK, bp=BOOSTER PUMP, dvgw=DVGW, cr=COLD RINSE, ws=WATER SOFTNER, dd=DETERGENT DISPENSER, dp=DRAIN PUMP

A=3/N/PE~380-400V 50-60Hz, D=3/PE~200-210V 50-60Hz, F=2/PE~220-240V 50-60Hz, G=3/N/PE~415V 50-60Hz, H=3/PE~220-230V 50-60Hz, K=3/PE~380-400V 50-60Hz, L=3/PE~415V 50-60Hz, M=3/PE~440V 60Hz, P=1/N/PE~220-230V 50-60Hz, R=2/PE~220-240V 50-60Hz, U=1/N/PE~240V 50-60Hz, V=3/PE~240V 50-60Hz, W=1/N/PE~100-110V 50-60Hz

vsezip.ru

+7(812)987-08-81



08_005_e

vsezip.ru

| ID | P-code | SN from | SN to | Mod | Acces. | Volt | Description |
|---------------------|-----------|---------|-------|-----|--------|------|--------------------------------|
| Module: DVGW | | | | | | | |
| 1300 | 999900006 | | - | em | dvgw | | DVGW assembly |
| 1305 | 11807 | | - | em | dvgw | | 12/22 clamp (minimum 3 pieces) |

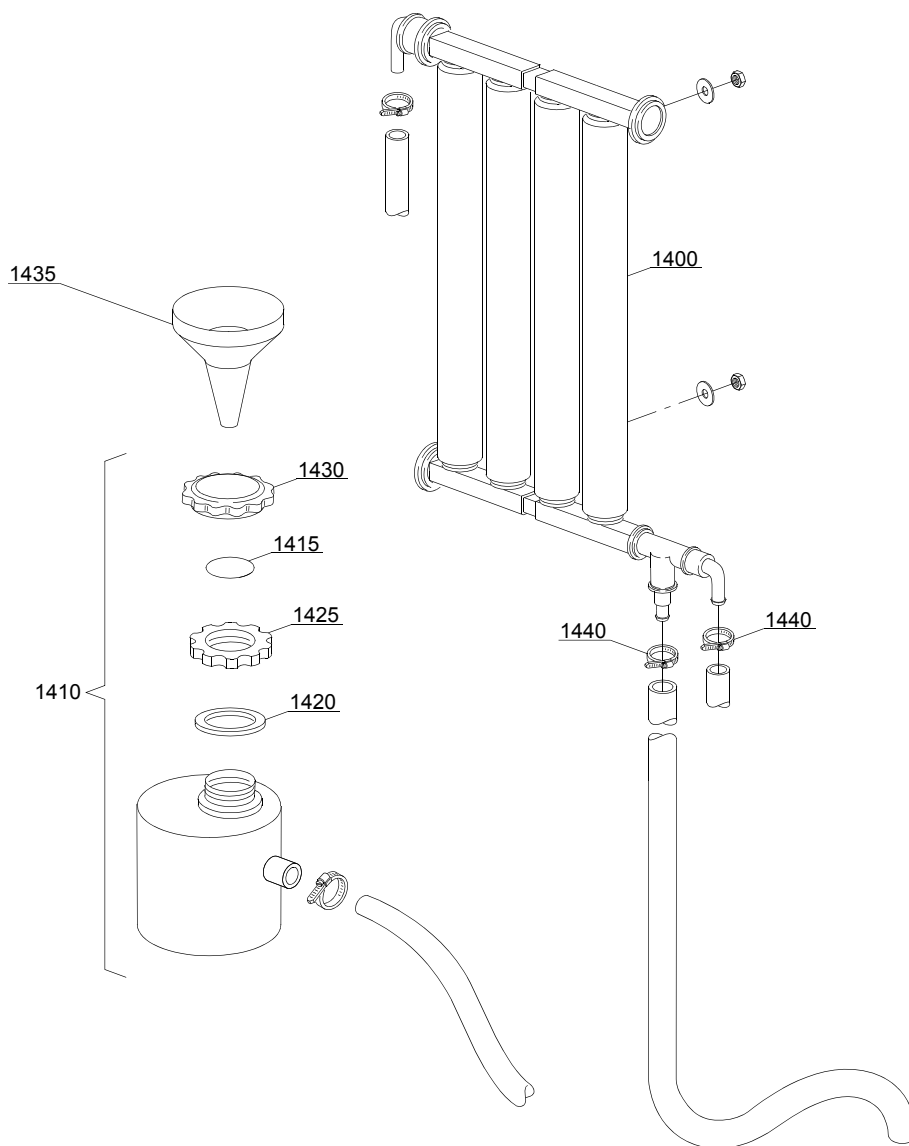
em=ELECTROMECHANICAL SWITCHES, uw=LOWER AND UPPER WASHING

7U=7U

bt=BREAK TANK, bp=BOOSTER PUMP, dvgw=DVGW, cr=COLD RINSE, ws=WATER SOFTNER, dd=DETERGENT DISPENSER, dp=DRAIN PUMP

A=3/N/PE~380-400V 50-60Hz, D=3/PE~200-210V 50-60Hz, F=2/PE~220-240V 50-60Hz, G=3/N/PE~415V 50-60Hz, H=3/PE~220-230V 50-60Hz, K=3/PE~380-400V 50-60Hz, L=3/PE~415V 50-60Hz, M=3/PE~440V 60Hz, P=1/N/PE~220-230V 50-60Hz, R=2/PE~220-240V 50-60Hz, U=1/N/PE~240V 50-60Hz, V=3/PE~240V 50-60Hz, W=1/N/PE~100-110V 50-60Hz

09_001_e



vsezip.ru

| ID | P-code | SN from | SN to | Mod. | Acces | Volt | Description |
|------------------------------------|---------|---------|-------|------|-------|------|--------------------------------|
| Module: Water softner group | | | | | | | |
| 1400 | 16066 | | - | em | ws | | 4 elements water softner |
| 1410 | 16065 | | - | em | ws | | Salt container |
| 1415 | 16067/A | | - | em | ws | | OR O-ring |
| 1420 | 16067/B | | - | em | ws | | O-ring |
| 1425 | 16067/C | | - | em | ws | | Ring nut |
| 1430 | 16067/D | | - | em | ws | | Plug |
| 1435 | 16082 | | - | em | ws | | Funnel |
| 1440 | 11807 | | - | em | ws | | 12/22 clamp (minimum 3 pieces) |

em=ELECTROMECHANICAL SWITCHES, uw=LOWER AND UPPER WASHING

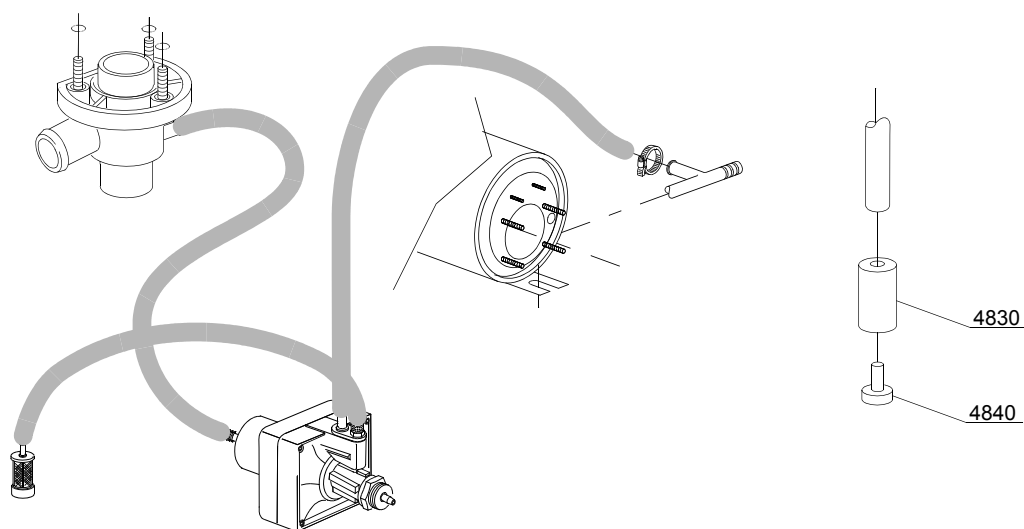
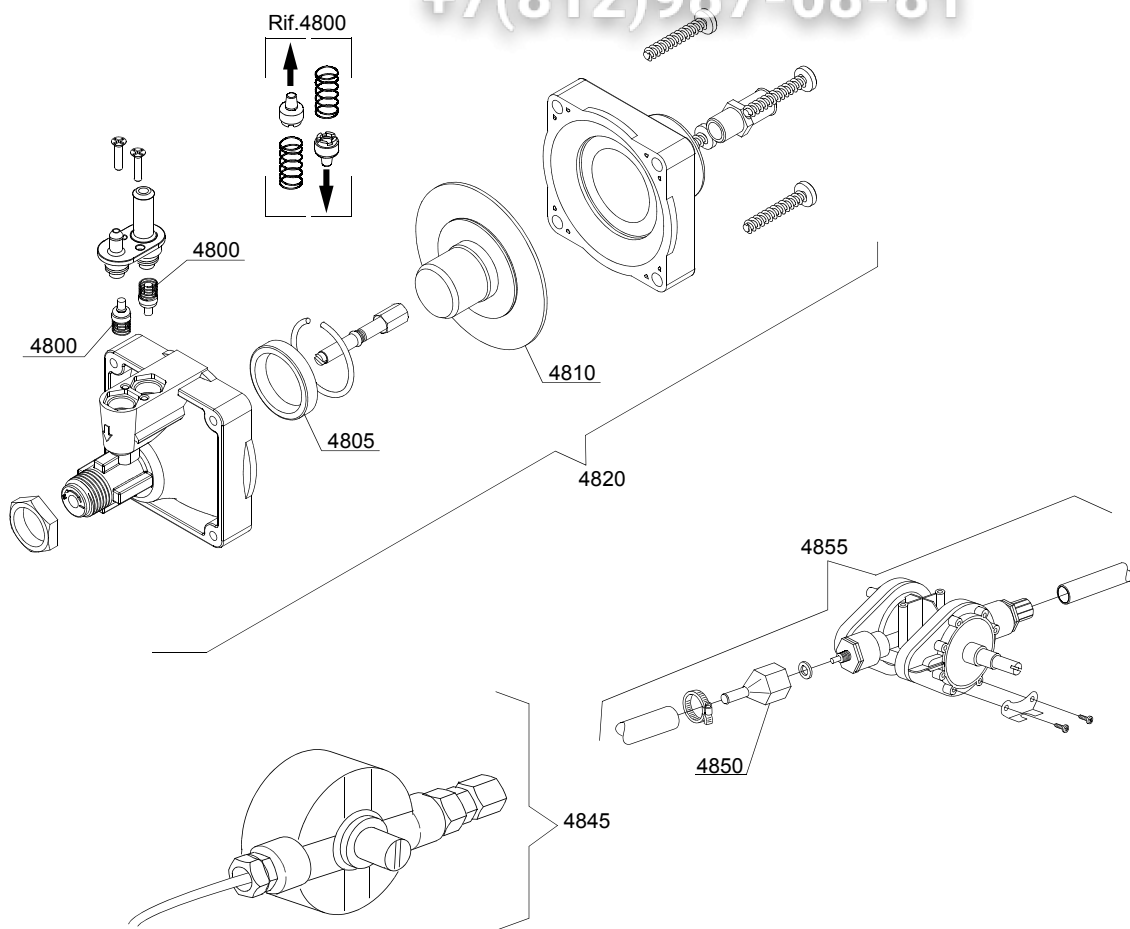
7U=7U

bt=BREAK TANK, bp=BOOSTER PUMP, dvgw=DVGW, cr=COLD RINSE, ws=WATER SOFTNER, dd=DETERGENT DISPENSER, dp=DRAIN PUMP

A=3/N/PE~380-400V 50-60Hz, D=3/PE~200-210V 50-60Hz, F=2/PE~220-240V 50-60Hz, G=3/N/PE~415V 50-60Hz, H=3/PE~220-230V 50-60Hz, K=3/PE~380-400V 50-60Hz, L=3/PE~415V 50-60Hz, M=3/PE~440V 60Hz, P=1/N/PE~220-230V 50-60Hz, R=2/PE~220-240V 50-60Hz, U=1/N/PE~240V 50-60Hz, V=3/PE~240V 50-60Hz, W=1/N/PE~100-110V 50-60Hz

vsezip.ru

+7(812)987-08-81



10_004_e

vsezip.ru

| ID | P-code | SN from | SN to | Mod. | Acces | Volt | Description |
|--|---------|---------|-------|------|-------|------|---------------------------------|
| Module: Rinse aid dispenser group | | | | | | | |
| 4800 | 10805 | | - | em | | | Tecnopro non return valve |
| 4805 | 10806 | | - | em | | | Ø22 O-ring |
| 4810 | 10807 | | - | em | | | Membrane |
| 4820 | 10799 | | - | em | | | TECNO PRO rinse aid dispenser |
| 4830 | 12525 | | - | em | | | Ballast |
| 4840 | 15058 | | - | em | | | Small filter (minimum 3 pieces) |
| 4845 | 10799 | | - | em | | | GERMAC rinse aid dispenser |
| 4850 | 10798/B | | - | em | | | Brass pipe fitting |
| 4855 | 10798 | | - | em | | | LANG rinse aid dispenser |

em=ELECTROMECHANICAL SWITCHES, uw=LOWER AND UPPER WASHING

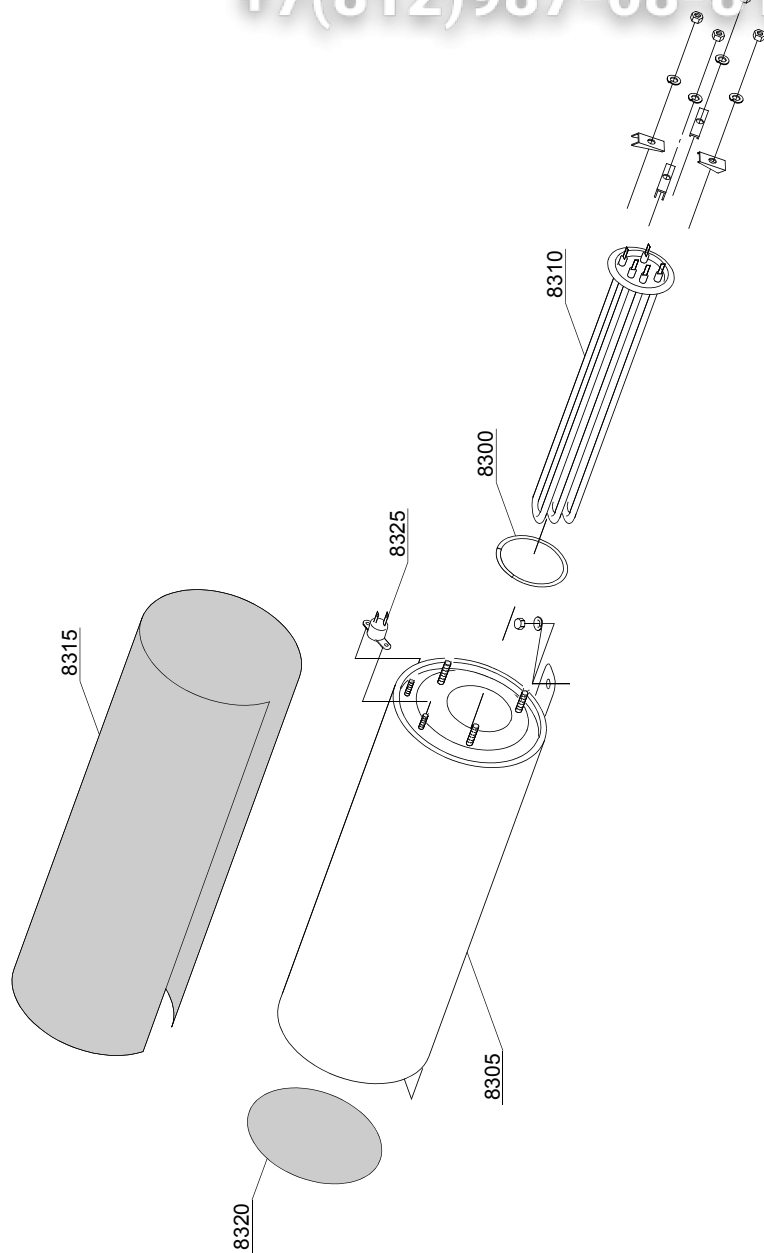
7U=7U

bt=BREAK TANK, bp=BOOSTER PUMP, dvgw=DVGW, cr=COLD RINSE, ws=WATER SOFTNER, dd=DETERGENT DISPENSER, dp=DRAIN PUMP

A=3/N/PE~380-400V 50-60Hz, D=3/PE~200-210V 50-60Hz, F=2/PE~220-240V 50-60Hz, G=3/N/PE~415V 50-60Hz, H=3/PE~220-230V 50-60Hz, K=3/PE~380-400V 50-60Hz, L=3/PE~415V 50-60Hz, M=3/PE~440V 60Hz, P=1/N/PE~220-230V 50-60Hz, R=2/PE~220-240V 50-60Hz, U=1/N/PE~240V 50-60Hz, V=3/PE~240V 50-60Hz, W=1/N/PE~100-110V 50-60Hz

vsezip.ru

+7(812)987-08-81



11_005_e

vsezip.ru

| ID | P-code | SN from | SN to | Mod | Acces. | Volt | Description |
|----------------------------|--------|---------|-------|-----|--------|------|--------------------------------------|
| Module:Boiler group | | | | | | | |
| 8300 | 13005 | | - | | | | OR 151 NBR O-ring (minimum 5 pieces) |
| 8305 | 26905 | | - | | | | Boiler |
| 8310 | 15046 | | - | | | | 3/3,27KW 230/240V 3 heating element |
| 8310 | 16036 | | - | | | | 1,84/2KW 230/240V heating element |
| 8315 | 26170 | | - | | | | Insulation boiler |
| 8320 | 26171 | | - | | | | End piece |
| 8325 | 15550 | | - | | | | Safety thermostat |

em=ELECTROMECHANICAL SWITCHES, uw=LOWER AND UPPER WASHING

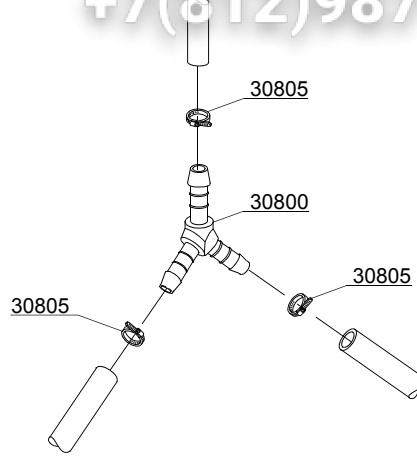
7U=7U

bt=BREAK TANK, bp=BOOSTER PUMP, dvgw=DVGW, cr=COLD RINSE, ws=WATER SOFTNER, dd=DETERGENT DISPENSER, dp=DRAIN PUMP

A=3/N/PE~380-400V 50-60Hz, D=3/PE~200-210V 50-60Hz, F=2/PE~220-240V 50-60Hz, G=3/N/PE~415V 50-60Hz, H=3/PE~220-230V 50-60Hz, K=3/PE~380-400V 50-60Hz, L=3/PE~415V 50-60Hz, M=3/PE~440V 60Hz, P=1/N/PE~220-230V 50-60Hz, R=2/PE~220-240V 50-60Hz, U=1/N/PE~240V 50-60Hz, V=3/PE~240V 50-60Hz, W=1/N/PE~100-110V 50-60Hz

vsezip.ru

+7(812)987-08-81



12_003ae

vsezip.ru

| ID | P-code | SN from | SN to | Mod. | Acces. | Volt | Description |
|---------------------------------|--------|---------|-------|------|--------|------|----------------------------------|
| Module:3 ways connection | | | | | | | |
| 30800 | 540090 | | - | em | | | Ø10 mm plastic 3 ways connection |
| 30805 | 11807 | | - | em | | | 12/22 clamp (minimum 3 pieces) |

em=ELECTROMECHANICAL SWITCHES, uw=LOWER AND UPPER WASHING

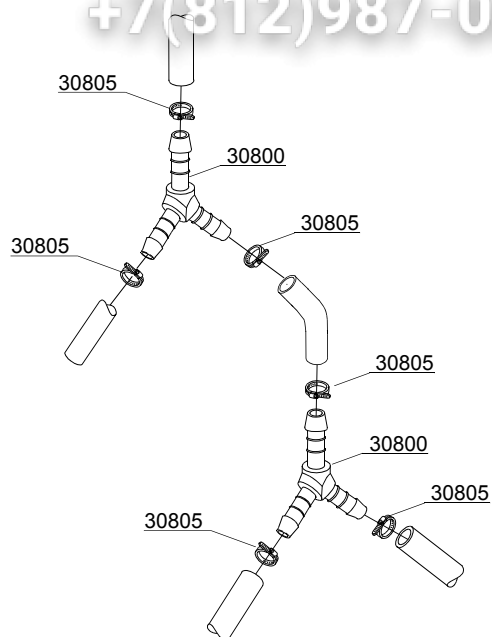
7U=7U

bt=BREAK TANK, bp=BOOSTER PUMP, dvgw=DVGW, cr=COLD RINSE, ws=WATER SOFTNER, dd=DETERGENT DISPENSER, dp=DRAIN PUMP

A=3/N/PE~380-400V 50-60Hz, D=3/PE~200-210V 50-60Hz, F=2/PE~220-240V 50-60Hz, G=3/N/PE~415V 50-60Hz, H=3/PE~220-230V 50-60Hz, K=3/PE~380-400V 50-60Hz, L=3/PE~415V 50-60Hz, M=3/PE~440V 60Hz, P=1/N/PE~220-230V 50-60Hz, R=2/PE~220-240V 50-60Hz, U=1/N/PE~240V 50-60Hz, V=3/PE~240V 50-60Hz, W=1/N/PE~100-110V 50-60Hz

vsezip.ru

+7(812)987-08-81



12_010_e

| ID | P-code | SN from | SN to | Mod. | Acces. | Volt | Description |
|---------------------------------|--------|---------|-------|------|--------|------|----------------------------------|
| Module:3 ways connection | | | | | | | |
| 30800 | 540090 | | - | em | cr | | Ø10 mm plastic 3 ways connection |
| 30805 | 11807 | | - | em | cr | | 12/22 clamp (minimum 3 pieces) |

em=ELECTROMECHANICAL SWITCHES, uw=LOWER AND UPPER WASHING

7U=7U

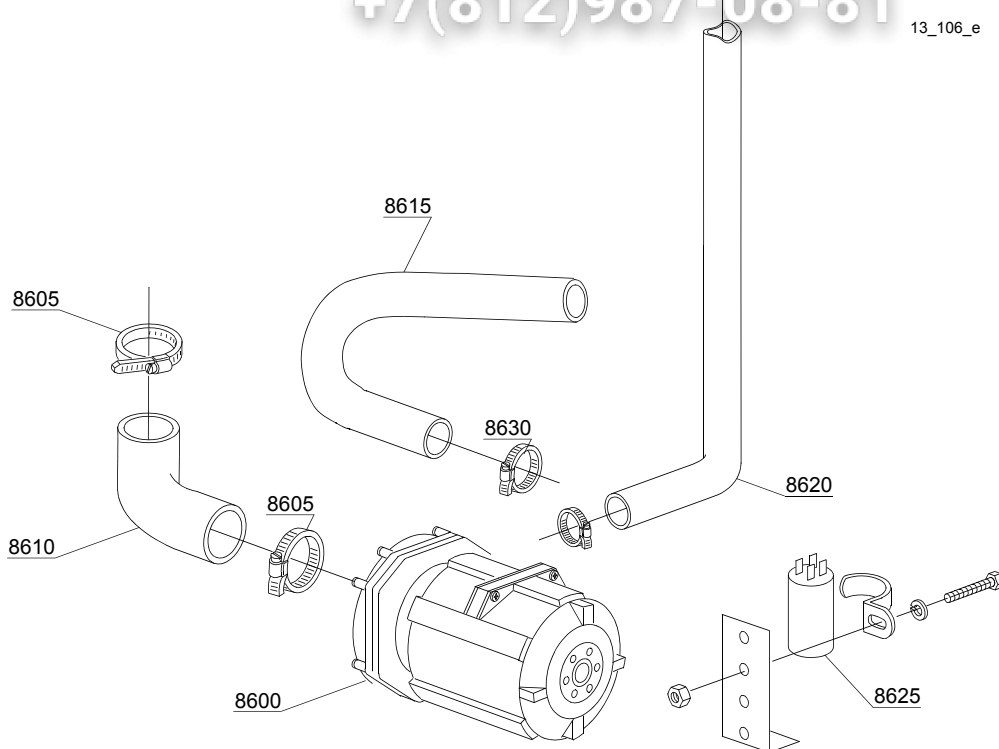
bt=BREAK TANK, bp=BOOSTER PUMP, dvgw=DVGW, cr=COLD RINSE, ws=WATER SOFTNER, dd=DETERGENT DISPENSER, dp=DRAIN PUMP

A=3/N/PE~380-400V 50-60Hz, D=3/PE~200-210V 50-60Hz, F=2/PE~220-240V 50-60Hz, G=3/N/PE~415V 50-60Hz, H=3/PE~220-230V 50-60Hz, K=3/PE~380-400V 50-60Hz, L=3/PE~415V 50-60Hz, M=3/PE~440V 60Hz, P=1/N/PE~220-230V 50-60Hz, R=2/PE~220-240V 50-60Hz, U=1/N/PE~240V 50-60Hz, V=3/PE~240V 50-60Hz, W=1/N/PE~100-110V 50-60Hz

vsezip.ru

+7(812)987-08-81

13_106_e



| ID | P-code | SN from | SN to | Mod. | Acces. | Volt | Description |
|--------------------------|----------|---------|-------|------|--------|------|--------------------------------|
| Module: Wash pump | | | | | | | |
| 8600 | 26176 | | - | uw | | A | 0,6Hp wash pump - 230V 50Hz |
| 8600 | 150915 | | - | uw | | | 0,70Hp wash pump - 230Vac 60Hz |
| 8605 | 11810 | | - | uw | | | 40/60 clamp (minimum 2 pieces) |
| 8610 | 15032 | | - | uw | | | Suction pipe coupling |
| 8615 | 15033 | | - | uw | | | Lower wash delivery pipe |
| 8620 | 30002021 | | - | uw | | | Top wash delivery pipe |
| 8625 | 18043 | | - | uw | | | 10 uF condenser |
| 8630 | 11806 | | - | uw | | | 25/40 clamp (minimum 2 pieces) |

em=ELECTROMECHANICAL SWITCHES, uw=LOWER AND UPPER WASHING

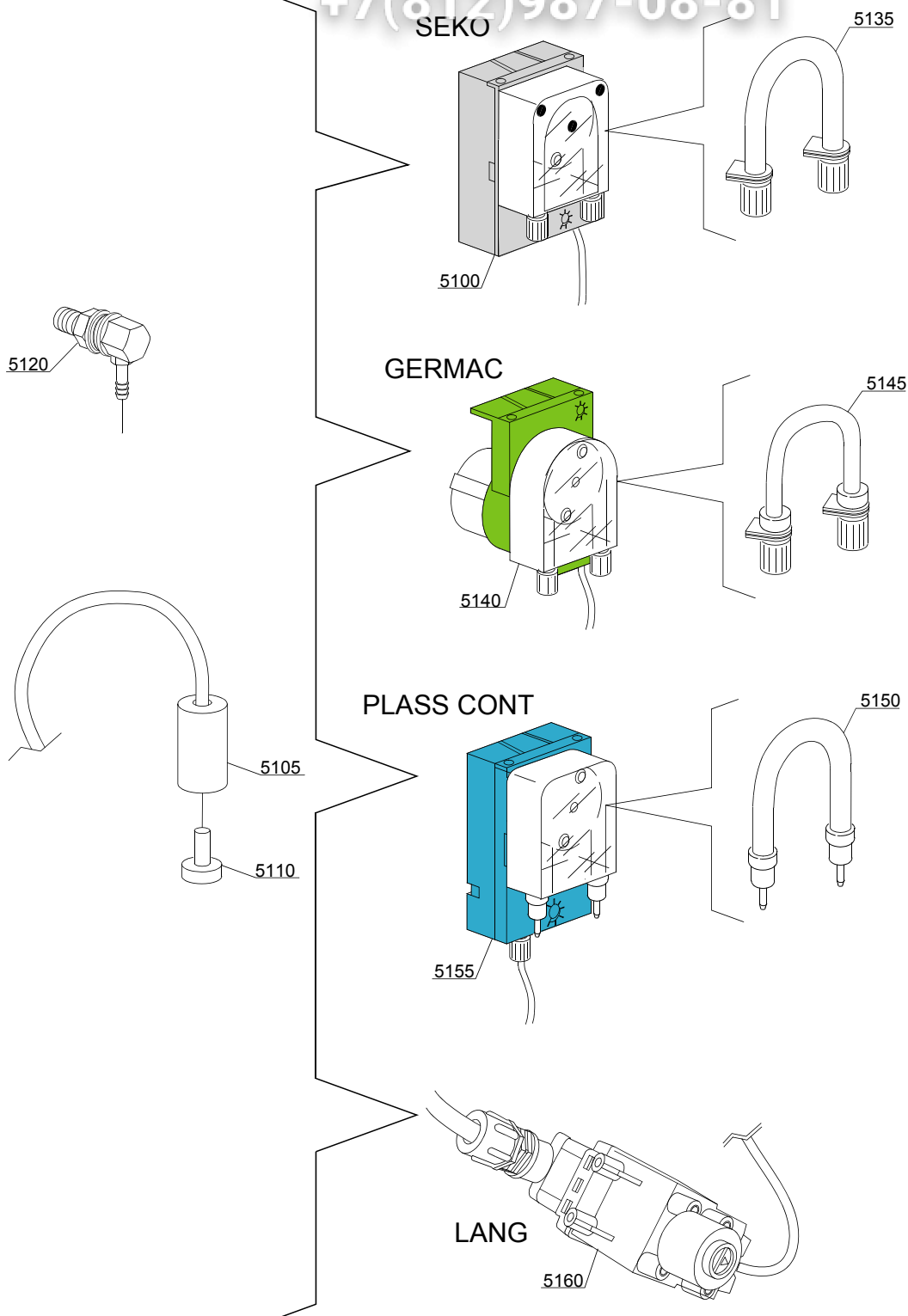
7U=7U

bt=BREAK TANK, bp=BOOSTER PUMP, dvgw=DVGW, cr=COLD RINSE, ws=WATER SOFTNER, dd=DETERGENT DISPENSER, dp=DRAIN PUMP

A=3/N/PE~380-400V 50-60Hz, D=3/PE~200-210V 50-60Hz, F=2/PE~220-240V 50-60Hz, G=3/N/PE~415V 50-60Hz, H=3/PE~220-230V 50-60Hz, K=3/PE~380-400V 50-60Hz, L=3/PE~415V 50-60Hz, M=3/PE~440V 60Hz, P=1/N/PE~220-230V 50-60Hz, R=2/PE~220-240V 50-60Hz, U=1/N/PE~240V 50-60Hz, V=3/PE~240V 50-60Hz, W=1/N/PE~100-110V 50-60Hz

vsezip.ru

+7(812)987-08-81



14_004_e

| ID | P-code | SN from | SN to | Mod. | Acces. | Volt | Description |
|--------------------------------------|---------|---------|-------|------|--------|------|----------------------------------|
| Module:Dosing detergent group | | | | | | | |
| 5100 | 15985 | | - | em | dd | | Seko detergent pump |
| 5105 | 12525 | | - | em | dd | | Ballast |
| 5110 | 15058 | | - | em | dd | | Small filter (minimum 3 pieces) |
| 5115 | 15123 | | - | em | dd | | Complet stainless steel injector |
| 5135 | 15185 | | - | em | dd | | Seko thermoplastic pipe |
| 5140 | 15985 | | - | em | dd | | Germac detergent pump |
| 5145 | 15108/E | | - | em | dd | | Germac thermoplastic pipe |
| 5150 | 15985/A | | | em | dd | | Plas Cont thermoplastic pipe |
| 5155 | 15985 | | | em | dd | | Plas Cont detergent pump |
| 5160 | 15108/L | | | em | dd | | LANG detergent pump |

em=ELECTROMECHANICAL SWITCHES, uw=LOWER AND UPPER WASHING

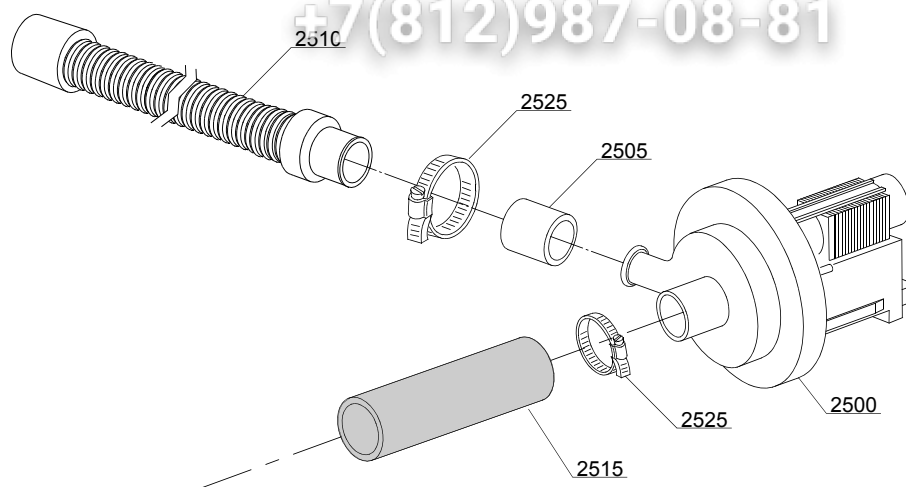
7U=7U

bt=BREAK TANK, bp=BOOSTER PUMP, dvgw=DVGW, cr=COLD RINSE, ws=WATER SOFTNER, dd=DETERGENT DISPENSER, dp=DRAIN PUMP

A=3/N/PE~380-400V 50-60Hz, D=3/PE~200-210V 50-60Hz, F=2/PE~220-240V 50-60Hz, G=3/N/PE~415V 50-60Hz, H=3/PE~220-230V 50-60Hz, K=3/PE~380-400V 50-60Hz, L=3/PE~415V 50-60Hz, M=3/PE~440V 60Hz, P=1/N/PE~220-230V 50-60Hz, R=2/PE~220-240V 50-60Hz, U=1/N/PE~240V 50-60Hz, V=3/PE~240V 50-60Hz, W=1/N/PE~100-110V 50-60Hz

vsezip.ru

+7(812)987-08-81



15_004ce

vsezip.ru

| ID | P-code | SN from | SN to | Mod. | Acces. | Volt | Description |
|---------------------------------|---------|---------|-------|------|--------|------|--|
| Module: Drain pump group | | | | | | | |
| 2500 | 15101 | | - | em | dp | | Drain pump 220/240V 50Hz |
| 2500 | 15101/B | | - | em | dp | | Drain pump - 220/240V 60Hz |
| 2505 | 15101/D | | - | em | dp | | Pipe fitting (minimum 3 pieces) |
| 2510 | 10727 | | - | em | dp | | Drain pipe |
| 2515 | 18787 | | - | em | dp | | Drain coude/pump connection pipe |
| 2525 | 11806 | | - | em | dp | | 25/40 clamp (minimum 2 pieces) |
| 2530 | 540098 | | - | em | dp, bt | | D25 3 ways connection for BREAK TANK(bt) |

em=ELECTROMECHANICAL SWITCHES, uw=LOWER AND UPPER WASHING

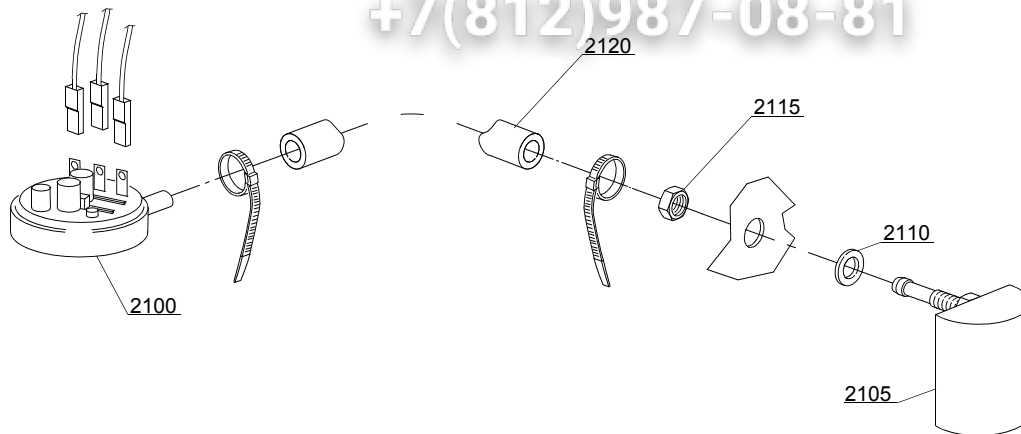
7U=7U

bt=BREAK TANK, bp=BOOSTER PUMP, dvgw=DVGW, cr=COLD RINSE, ws=WATER SOFTNER, dd=DETERGENT DISPENSER, dp=DRAIN PUMP

A=3/N/PE~380-400V 50-60Hz, D=3/PE~200-210V 50-60Hz, F=2/PE~220-240V 50-60Hz, G=3/N/PE~415V 50-60Hz, H=3/PE~220-230V 50-60Hz, K=3/PE~380-400V 50-60Hz, L=3/PE~415V 50-60Hz, M=3/PE~440V 60Hz, P=1/N/PE~220-230V 50-60Hz, R=2/PE~220-240V 50-60Hz, U=1/N/PE~240V 50-60Hz, V=3/PE~240V 50-60Hz, W=1/N/PE~100-110V 50-60Hz

vsezip.ru

+7(812)987-08-81



16_001_e

| ID | P-code | SN from | SN to | Mod. | Acces. | Volt | Description |
|--|----------|---------|-------|------|--------|------|--|
| Module: Pressure switch group with air trap | | | | | | | |
| 2100 | 10706/A | | - | em | | | 47-27 pressure switch |
| 2105 | 135911/D | 4020618 | - | em | | | Grey air trap assembly |
| 2110 | 13301 | | - | em | | | O-ring (minimum 10 pieces) - D14x8x1,5 |
| 2115 | 11702 | | - | em | | | M8 stainless steel nut (minimum 10 pieces) |
| 2120 | 14508 | | - | em | | | 4,5X9 EPDM rubber hose (minimum 2mt) |

em=ELECTROMECHANICAL SWITCHES, uw=LOWER AND UPPER WASHING

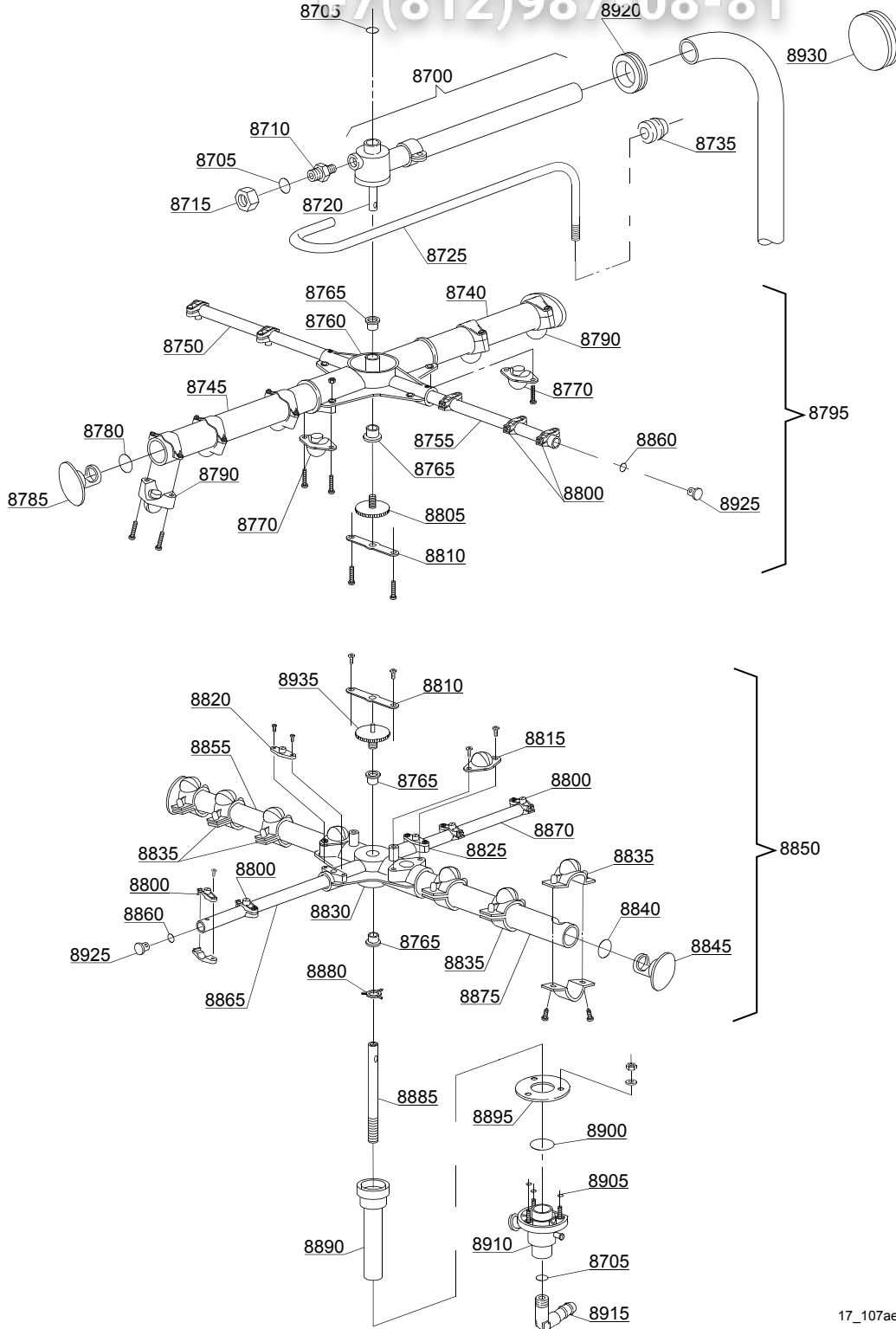
7U=7U

bt=BREAK TANK, bp=BOOSTER PUMP, dvgw=DVGW, cr=COLD RINSE, ws=WATER SOFTNER, dd=DETERGENT DISPENSER, dp=DRAIN PUMP

A=3/N/PE~380-400V 50-60Hz, D=3/PE~200-210V 50-60Hz, F=2/PE~220-240V 50-60Hz, G=3/N/PE~415V 50-60Hz, H=3/PE~220-230V 50-60Hz, K=3/PE~380-400V 50-60Hz, L=3/PE~415V 50-60Hz, M=3/PE~440V 60Hz, P=1/N/PE~220-230V 50-60Hz, R=2/PE~220-240V 50-60Hz, U=1/N/PE~240V 50-60Hz, V=3/PE~240V 50-60Hz, W=1/N/PE~100-110V 50-60Hz

vsezip.ru

+7(812)987-08-81



17_107ae

| ID | P-code | SN from | SN to | Mod. | Acces. | Volt | Description |
|---|---------|----------|----------|------|--------|------|---|
| Module:Turret group with rotating arms | | | | | | | |
| 8700 | 26911 | | 5022569 | uw | | | Top wash/rinse distributor group |
| 8700 | 26911/A | 5022570 | - | uw | | | Top wash/rinse distributor group |
| 8705 | 13003 | | - | uw | | | OR 112 NBR O-ring (minimum 10 pieces) |
| 8710 | 12006 | | - | uw | | | Ø10 rinse pipe fitting |
| 8715 | 12006/A | | - | uw | | | Ø10 pipe fitting 3/8x3,5 nut 19 hexagonal |
| 8720 | 15300 | | - | uw | | | Ø10x51 lower/top rinse axle |
| 8725 | 26971 | 3019192 | - | uw | | | Complete rinse ramp |
| 8735 | 13304 | | - | uw | | | Pipe-pass O-ring |
| 8740 | 15571 | | - | uw | | | Ø28 right wash pipe |
| 8745 | 15572 | | - | uw | | | Ø28 left wash pipe |
| 8750 | 15575 | | - | uw | | | Right rinse pipe |
| 8755 | 15576 | | - | uw | | | Left rinse pipe |
| 8760 | 10209 | | 20041202 | uw | | | 4 ways big rotor |
| 8760 | 10259 | 20041203 | - | uw | | | 4 ways big rotor |
| 8765 | 13319 | | - | uw | | | Sliding washer (minimum 2 pieces) |
| 8770 | 10218 | | 20041202 | uw | | | Ø28 opened plane nozzle (minimum 2 pieces) |
| 8770 | 10268 | 20041203 | - | uw | | | Ø28 opened plane nozzle (minimum 2 pieces) |
| 8780 | 13018 | | - | uw | | | OR 2087 NBR O-ring (minimum 10 pieces) |
| 8785 | 10257 | | - | uw | | | Ø28 plastic plug (minimum 3 pieces) |
| 8790 | 10211 | | 20041202 | uw | | | Ø28 raised nozzle (minimum 2 pieces) |
| 8790 | 10261 | 20041203 | - | uw | | | Ø28 raised nozzle (minimum 2 pieces) |
| 8795 | 15956 | | 20041202 | uw | | | Ø28 wash/rinse group |
| 8795 | 15958 | 20041203 | - | uw | | | Ø28 wash/rinse group |
| 8800 | 12528 | | 20041202 | uw | | | Ø10 complet rinse nozzle (minimum 2 pieces) |
| 8800 | 10262 | 20041203 | - | uw | | | Ø10 complet rinse nozzle (minimum 2 pieces) |
| 8805 | 11101/I | | - | uw | | | Stainless steel group fixing screw |
| 8810 | 10210 | | 20041202 | uw | | | Blocking ring nut rotor plaque |
| 8810 | 10260 | 20041203 | - | uw | | | Blocking ring nut rotor plaque |

em=ELECTROMECHANICAL SWITCHES, uw=LOWER AND UPPER WASHING

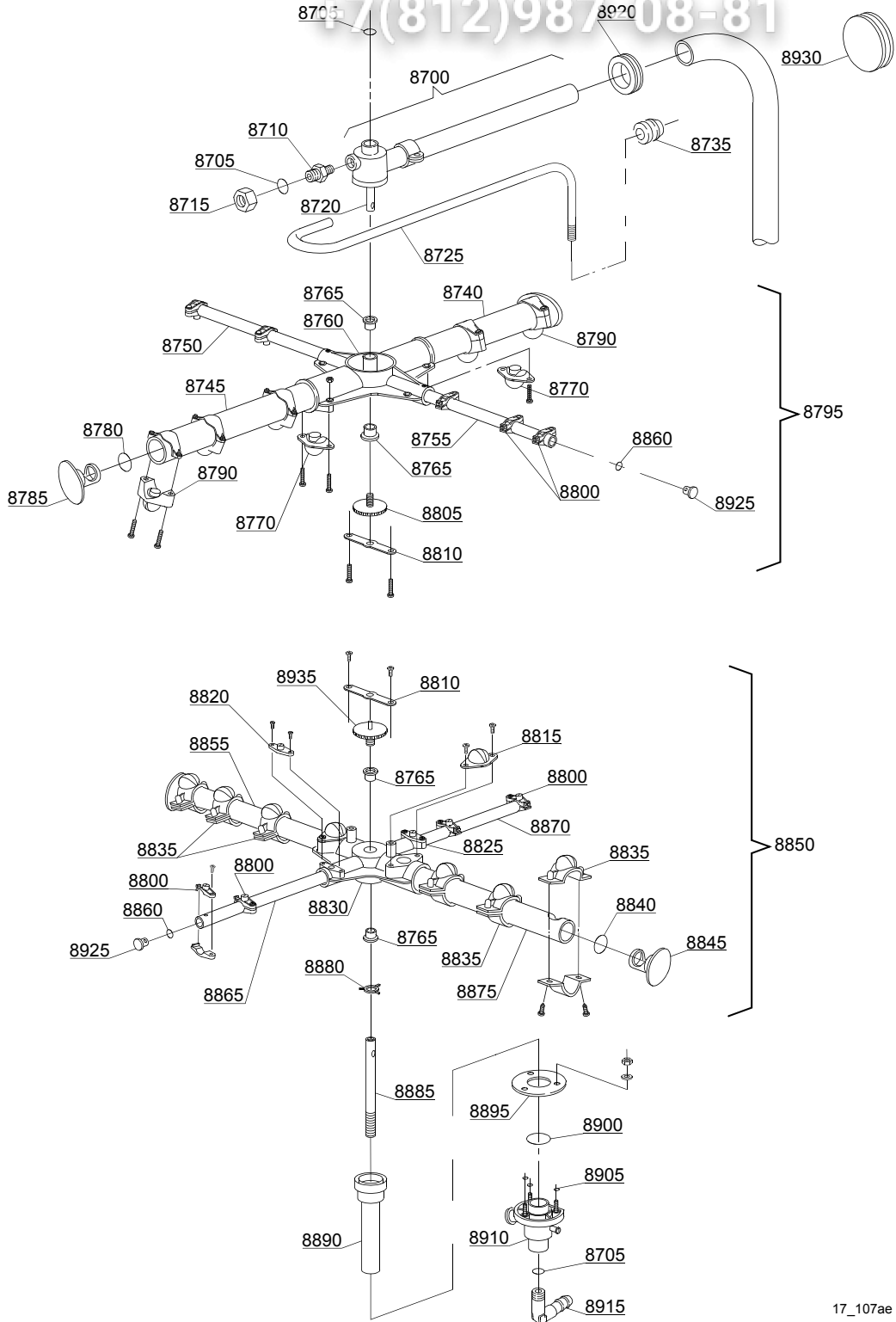
7U=7U

bt=BREAK TANK, bp=BOOSTER PUMP, dvgw=DVGW, cr=COLD RINSE, ws=WATER SOFTNER, dd=DETERGENT DISPENSER, dp=DRAIN PUMP

A=3/N/PE~380-400V 50-60Hz, D=3/PE~200-210V 50-60Hz, F=2/PE~220-240V 50-60Hz, G=3/N/PE~415V 50-60Hz, H=3/PE~220-230V 50-60Hz, K=3/PE~380-400V 50-60Hz, L=3/PE~415V 50-60Hz, M=3/PE~440V 60Hz, P=1/N/PE~220-230V 50-60Hz, R=2/PE~220-240V 50-60Hz, U=1/N/PE~240V 50-60Hz, V=3/PE~240V 50-60Hz, W=1/N/PE~100-110V 50-60Hz

vsezip.ru

17(812)987-08-81



17_107ae

| ID | P-code | SN from | SN to | Mod. | Acces. | Volt | Description |
|---|---------|----------|----------|------|--------|------|---|
| Module:Turret group with rotating arms | | | | | | | |
| 8815 | 10212 | | - | uw | | | Ø18 opened plane nozzle (minimum 2 pieces) |
| 8820 | 10213 | | 20041202 | uw | | | Ø10 opened plane nozzle (minimum 2 pieces) |
| 8820 | 10263 | 20041203 | - | uw | | | Ø10 opened plane nozzle (minimum 2 pieces) |
| 8825 | 10217 | | 20041202 | uw | | | Ø10 closed plane nozzle (minimum 2 pieces) |
| 8825 | 10267 | 20041203 | - | uw | | | Ø10 closed plane nozzle (minimum 2 pieces) |
| 8830 | 10208 | | - | uw | | | 4 ways small rotor |
| 8835 | 10746 | | - | uw | | | Nozzle with horizontal fissure (minimum 3 pieces) |
| 8840 | 13009 | | - | uw | | | OR 2050 NBR O-ring (minimum 40 pieces) |
| 8845 | 10256 | | - | uw | | | Ø18 plastic plug (minimum 2 pieces) |
| 8850 | 26957 | | - | uw | | | Wash/rinse group |
| 8855 | 26152 | | - | uw | | | Left wash pipe |
| 8860 | 13016 | | - | uw | | | 2018 OR 103 NBR O-ring (minimum 10 pieces) |
| 8865 | 26153 | | - | uw | | | Right rinse pipe |
| 8870 | 26154 | | - | uw | | | Left rinse pipe |
| 8875 | 26151 | | - | uw | | | Right wash pipe |
| 8880 | 10203 | | - | uw | | | Guide pipe |
| 8885 | 19003 | | - | uw | | | 10x1x190 stainless steel ground axle |
| 8890 | 19250 | | - | uw | | | Bell-shape assembly with pipe coupling |
| 8895 | 16038 | | - | uw | | | Ø60 stainless steel disk |
| 8900 | 13000 | | - | uw | | | OR 3125 NBR O-ring (minimum 5 pieces) |
| 8905 | 13001 | | - | uw | | | OR 104 NBR O-ring (minimum 10 pieces) |
| 8910 | 10205 | | - | uw | | | Lower wash turret |
| 8915 | 12030 | | - | uw | | | 3/8M Ø12 elbow pipe fitting |
| 8920 | 13306/A | | - | uw | | | Top wash ramp O-ring |
| 8925 | 12532 | | - | uw | | | Ø10 plastic plug (minimum 3 pieces) |
| 8930 | 13316/A | | - | uw | | | DVGW hole O-ring |
| 8935 | 11101/A | | - | uw | | | Stainless steel group fixing screw |

em=ELECTROMECHANICAL SWITCHES, uw=LOWER AND UPPER WASHING

7U=7U

bt=BREAK TANK, bp=BOOSTER PUMP, dvgw=DVGW, cr=COLD RINSE, ws=WATER SOFTNER, dd=DETERGENT DISPENSER, dp=DRAIN PUMP

A=3/N/PE~380-400V 50-60Hz, D=3/PE~200-210V 50-60Hz, F=2/PE~220-240V 50-60Hz, G=3/N/PE~415V 50-60Hz, H=3/PE~220-230V 50-60Hz, K=3/PE~380-400V 50-60Hz, L=3/PE~415V 50-60Hz, M=3/PE~440V 60Hz, P=1/N/PE~220-230V 50-60Hz, R=2/PE~220-240V 50-60Hz, U=1/N/PE~240V 50-60Hz, V=3/PE~240V 50-60Hz, W=1/N/PE~100-110V 50-60Hz