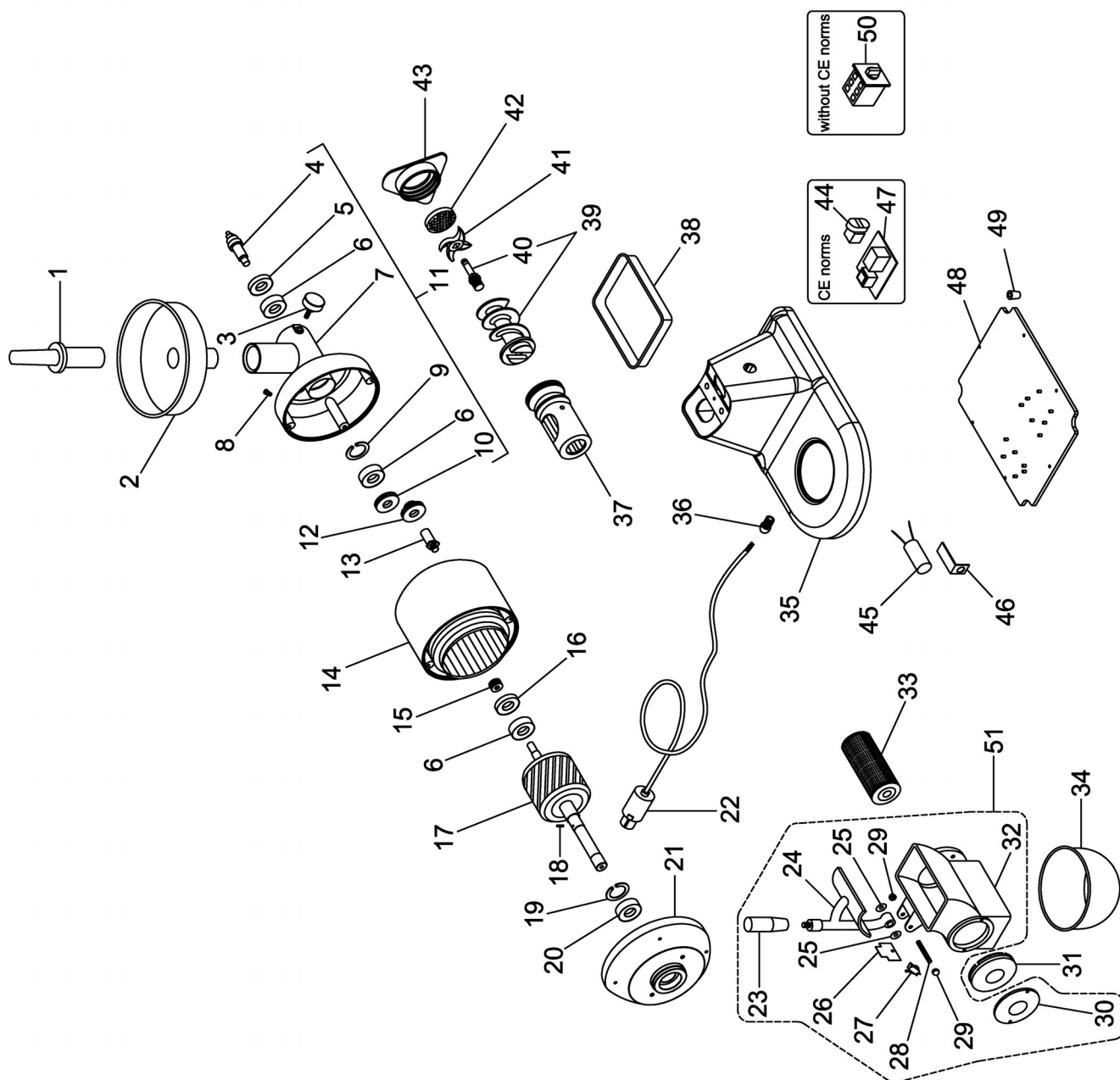


AB12T-LQ0

Зип Ощепит

vsezip.ru

+7(812)987-08-81



AB12T-LQ0

Pos. Ref.	Codice Code	Caratteristiche Features	Description	Description
1	SL0134	●	Pestello	Pusher
2	SL0136	(AB12T)	Tramoggia	Hopper
2	SL0135	(AB12L)	Tramoggia	Hopper
3	SL0138	●	Pomello	Knob
4	SL0140		Albero	Shaft
5	SL0139	∅25x∅40x7	Paraolio	Oil seal
6	SL0131	6203 2RS	Cuscinetto	Bearing
7	SL3980		Bocchettone	Sleeve
8	SL2917	●	Tappo	Tap
9	SL0132	∅40	Seeger	Seeger
10	SL0130		Ingranaggio	Gear
11	SA3710	Assembly	Bocchettone	Sleeve
12	SL0125		Ingranaggio	Gear
13	SL0124		Albero	Shaft
14	SA1014	400V/1Ph/50Hz	Statore	Stator
14	SA1015	230V/1Ph/50Hz	Statore	Stator
15	SL0128		Ingranaggio	Gear
16	SL0127	∅17x∅40x7	Paraolio	Oil seal
17	SA6700	400V/1Ph/50Hz	Rotore	Rotor
17	SA6600	230V/1Ph/50Hz	Rotore	Rotor
18	SL0121	∅5x10	Spina	Pin
19	SL0119	∅52	Seeger	Seeger
20	SL0118	6205 2RS	Cuscinetto	Bearing
21	SL0117		Calotta	Calotte
22	SL1841	3Ph+Gnd	Cavo elettrico	Electric cable
22	SL1671	1Ph+N+Gnd	Cavo elettrico	Electric cable
23	SL0106	●	Impugnatura	Grip
24	SA1113		Pressore	Lever press
25	SL3140		Rosetta	Washer
26	SL3138		Copertura	Covering
27	SL0885	●	Microinterruttore	Microswitch
28	SL0258		Prigioniero	Stud
29	SL0108		Dado	Nut
30	SL2833		Coperchio	Cover
31	SL2573		Tappo	Tap
32	SA1012	Assembly	Bocca	Casing
33	SA2800		Rullo	Roller
34	SL0174	(AB12T)	Recipiente	Container
34	SL0175	(AB12L)	Recipiente	Container
35	SL2988	(AB12T)	Base	Base
35	SL0179	(AB12L)	Base	Base
36	SL1668	PG11	Pressacavo	Cable clamp
37	SL0142	Stainless-steel	Bocchettone	Sleeve
37	SL3078	Food stuff treated steel	Bocchettone	Sleeve
38	SL0180	(AB12T)	Recipiente	Container
38	SL0175	(AB12L)	Recipiente	Container
39	SA5300	● Stainless-steel	Elica	Screw shaft
39	SA5350	Food stuff treated cast-iron	Elica	Screw shaft
40	SL2521		Perno	Pivot
41	//////	●	Coltello	Cutter
42	//////	●	Piastra	Plate
43	SL0171	Stainless-steel	Volantino	Handwheel
43	SL3327R0	Aluminium	Volantino	Handwheel
44	SL0891	● Start-stop	Pulsante	Push button
45	SL0177	16µF	Condensatore	Condenser
46	SL0176		Staffa	Bracket
47	SL0883	●	Scheda elettronica	Electronic card
48	SL2651	(AB12T)	Fondo	Bottom
48	SL0226	(AB12L)	Fondo	Bottom
49	SL0235		Piedino	Foot
50	SL0054		Interruttore	Switch
51	SA1119	Assembly	Bocca	Casing

(*) : fuori produzione / out of production

● : ricambio consigliato / spare part suggested