

Зип Ощепит

vsezip.ru

DESPIECE TECNICO  
LISTE DE PIÈCES DÉTACHÉES  
SPARE PARTS LIST

Julio - 1997

LAVAVAJILLAS  
LAVEVAISSELLES  
DISH WASHING MACHINE

Modelos:  
FI-30



Proyectos e Instalaciones y S.A.T.  
Oñati, 26 de Agosto de 1997

Hostelería, Frío Comercial y Lavandería Industrial  
Grandes Cuisines, Froid Commercial et Buanderie  
Catering, Commercial Refrigeration and Laundry Equipment

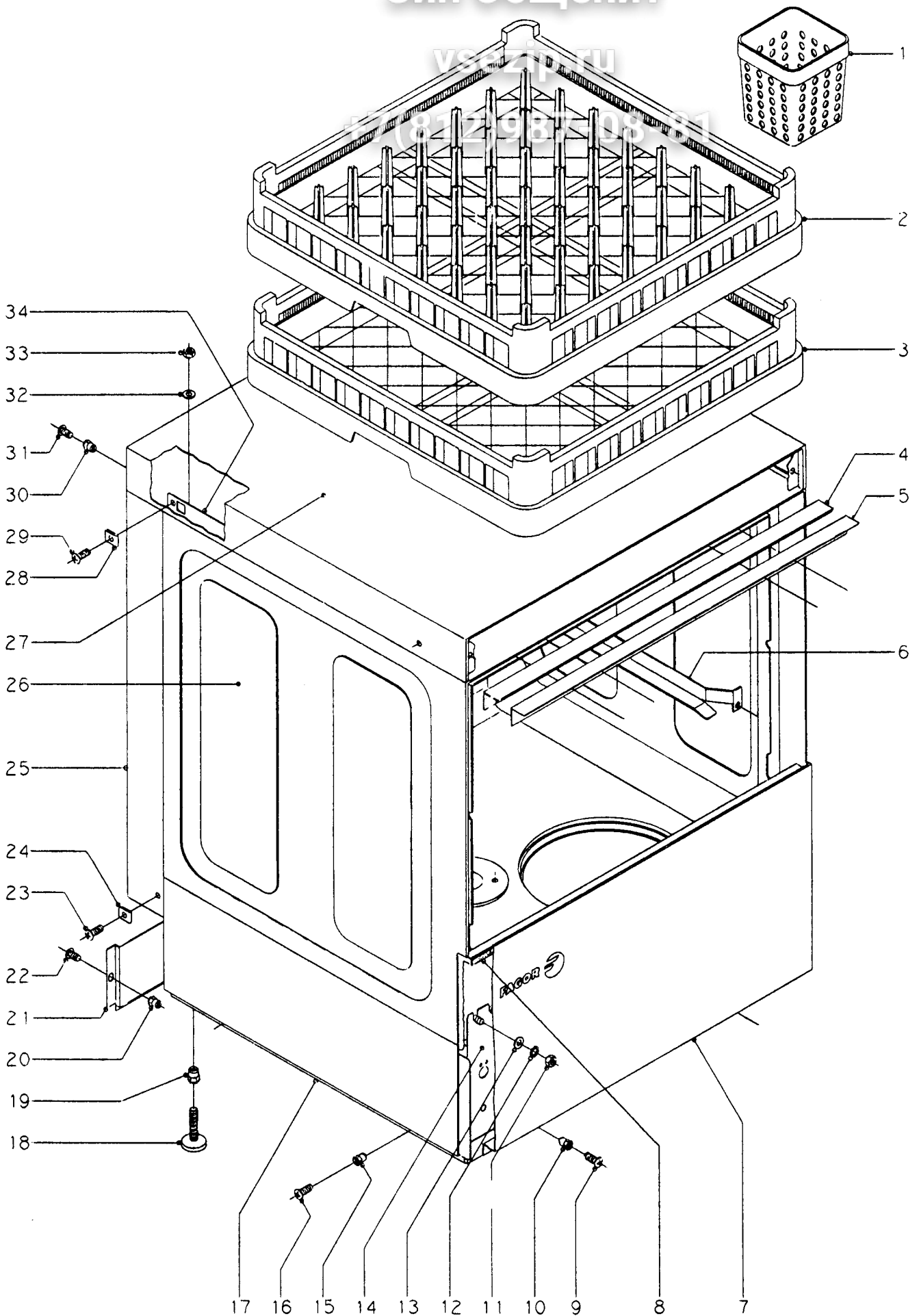
**Fagor Industrial, S. Coop.**  
20560 - Oñati - España



# Зип Общепит

VSE ZP TU

81219870801



N plano  
C-460

Firma  
*D. [Signature]*

Fecha  
7-97

Aparato

LAVAVAJILLAS FI-30

Lamina  
1

Fagor Industrial S. Coop. **FAGOR**  
Dibute

# Зип Ощепит

vsezip.ru

+7(812)987-08-81

**CONCEPTO:** MUEBLE EXTERIOR  
**SUJET:** MEUBLE EXTERIEUR  
**CONCEPT:** EXTERNAL CABINET

LAMINAN°  
 VUE N°  
 ILUSTR. N.

1

**APARATO - APPAREIL - APPLIANCE:** LAVAVAJILLAS - LAVEVAISSELLES - DISH WASHING MACHINE

**MODELO Y CANTIDAD - MOD. I**

| Nº  | CODIGO  | DENOMINACION              | DENOMINATION                 | DESCRIPTION          | FI-30 |  |  |
|-----|---------|---------------------------|------------------------------|----------------------|-------|--|--|
| 1   | Z655314 | Cestillo cubiertos        | Panier                       | Basket               | 1     |  |  |
| 2   | Z655302 | Cestillo platos CP-16/18  | Panier                       | Basket               | 1     |  |  |
| 3   | Z655301 | Cestillo base CT-10       | Panier base CT - 10          | Base basquet CT - 10 | 1     |  |  |
| 4   | Z200315 | Perfil caja               | Profil                       | Profile              | 1     |  |  |
| 5   | Z200309 | Escuadra sujeción perfil  | Equerre fixation profil      | Fastening plate      | 1     |  |  |
| 6   | Z200305 | Guía cestillo derecha     | Guide panier droite          | Right basket guide   | 1     |  |  |
| s/n | Z200306 | Guía cestillo izquierda   | Guide panier gauche          | Left basket guide    | 1     |  |  |
|     | Q232040 | Arandela plana A.6        | Rondelle A.6                 | Washer A.6           | 4     |  |  |
|     | Q162040 | Tuerca exagonal M.6       | Ecrou M.6                    | Nut M.6              | 4     |  |  |
| 7   | Z202901 | Panel frontal             | Panneau frontal              | Front panel          | 1     |  |  |
| 8   | Z200313 | Perfil goma esponjosa     | Profil mousseux              | Spongy profile       | 1     |  |  |
| 9   | Q152004 | Tornillo aplastado M.5x13 | Vis M.5x13                   | Bolt M.5x13          | 2     |  |  |
| 10  | Q221342 | Remache exagonal M.5      | Rivet M.5                    | Rivet M.5            | 2     |  |  |
| 11  | Q162040 | Tuerca exagonal M.6       | Ecrou M.6                    | Nut M.6              | 8     |  |  |
| 12  | Q262040 | Arandela muelle A.6       | Rondelle A.6                 | Washer A.6           | 8     |  |  |
| 13  | Q232040 | Arandela plana A.6        | Rondelle A.6                 | Washer A.6           | 8     |  |  |
| 14  | Z200101 | Armazón completo          | Châssis                      | Complete frame       | 1     |  |  |
| 15  | Q221342 | Remache exagonal M.5      | Rivet M.5                    | Rivet M.5            | 4     |  |  |
| 16  | Q152004 | Tornillo aplastado M.5x13 | Vis M.5x13                   | Bolt M.5x13          | 4     |  |  |
| 17  | Z202903 | Panel lateral izquierdo   | Panneau lateral gauche       | Side left panel      | 1     |  |  |
| s/n | Z202902 | Panel lateral derecho     | Panneau lateral droit        | Side right panel     | 1     |  |  |
| 18  | Z200105 | Pata regulable            | Pied réglable                | Adjustable leg       | 4     |  |  |
| 19  | Q221345 | Remache exagonal M.10     | Rivet M.10                   | Rivet M.10           | 4     |  |  |
| 20  | Q221342 | Remache exagonal M.5      | Rivet M.5                    | Rivet M.5            | 2     |  |  |
| 21  | Z202912 | Panel posterior inferior  | Panneau posterieur inferieur | Low rear panel       | 1     |  |  |
| 22  | Q152004 | Tornillo aplastado M.5x13 | Vis M.5x13                   | Bolt M 5.13          | 2     |  |  |
| 23  | Q152004 | Tornillo aplastado M.5x13 | Vis M.5x13                   | Bolt M.5x13          | 2     |  |  |
| 24  | Q221012 | Tuerca rápida M.5         | Ecrou M.5                    | Nut M.5              | 2     |  |  |
| 25  | Z202904 | Panel posterior           | Panneau posterieur           | Rear panel           | 1     |  |  |
| 26  | Z200301 | Caja soldada              | Boîte complete               | Compleat case        | 1     |  |  |
| 27  | Z202906 | Tapa                      | Couvercle                    | Cover                | 1     |  |  |

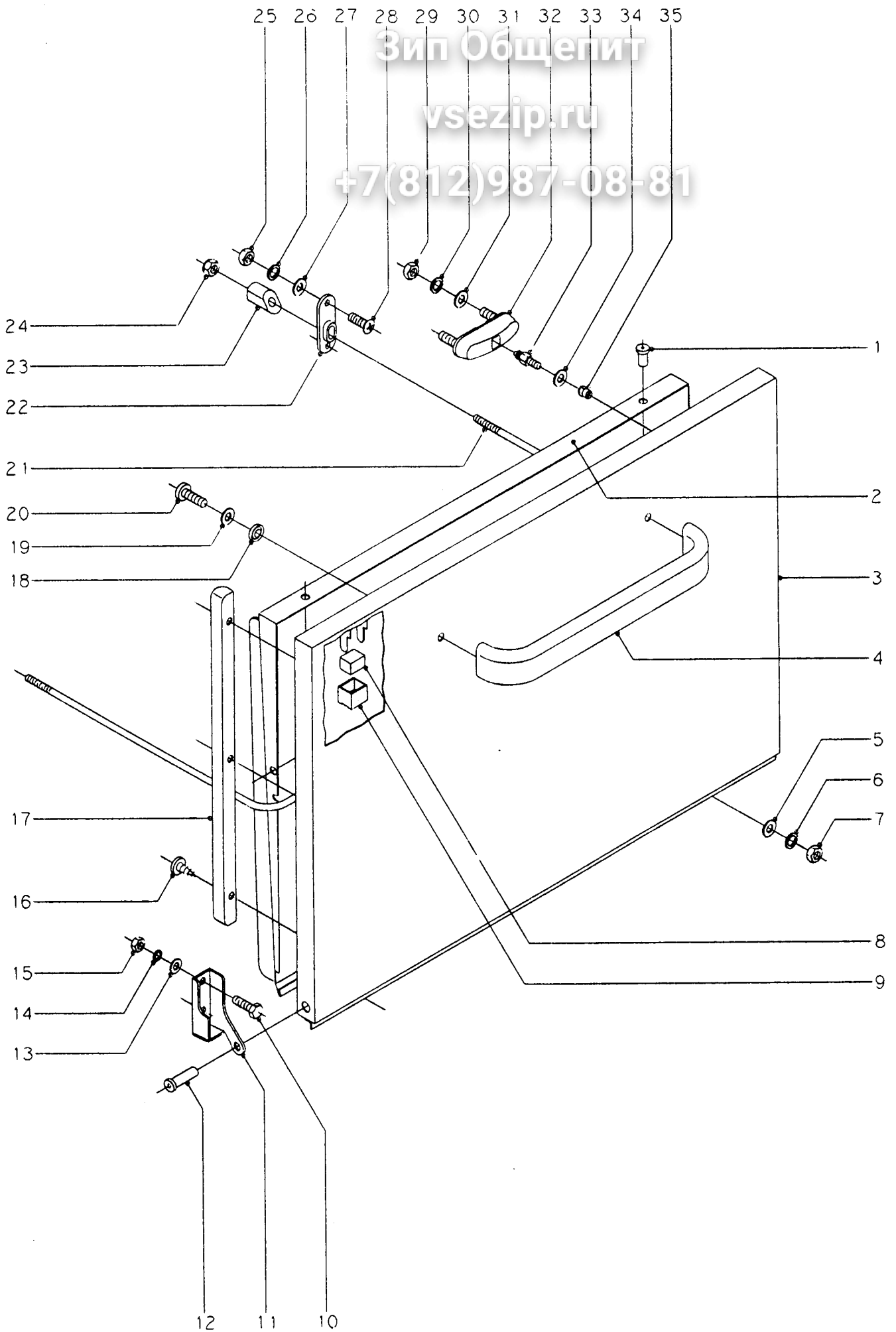


25 26 27 28 29 30 31 32 33 34 35

Зип Общепит

vsezip.ru

+7(812)987-08-81



|         |       |       |                    |        |                                       |
|---------|-------|-------|--------------------|--------|---------------------------------------|
| N plano | Firma | Fecha | Aprobado           | Lamina | Fagor Industrial S Coop. <b>FAGOR</b> |
| C-461   |       | 7-97  | LAVAVAJILLAS FI-30 | 2      | Onote                                 |

# Зип Ощепит

vsezip.ru

+7(812)987-08-81

CONCEPTO: PUERTA  
SUJET: PORTE  
CONCEPT: DOOR

LAMINAN°  
VUE N°  
ILUSTR. N.

2

APARATO - APPAREIL - APPLIANCE: LAVAVAJILLAS - LAVEVAISSELLES - DISH WASHING MACHINE

MODELO Y CANTIDAD - MOD. I

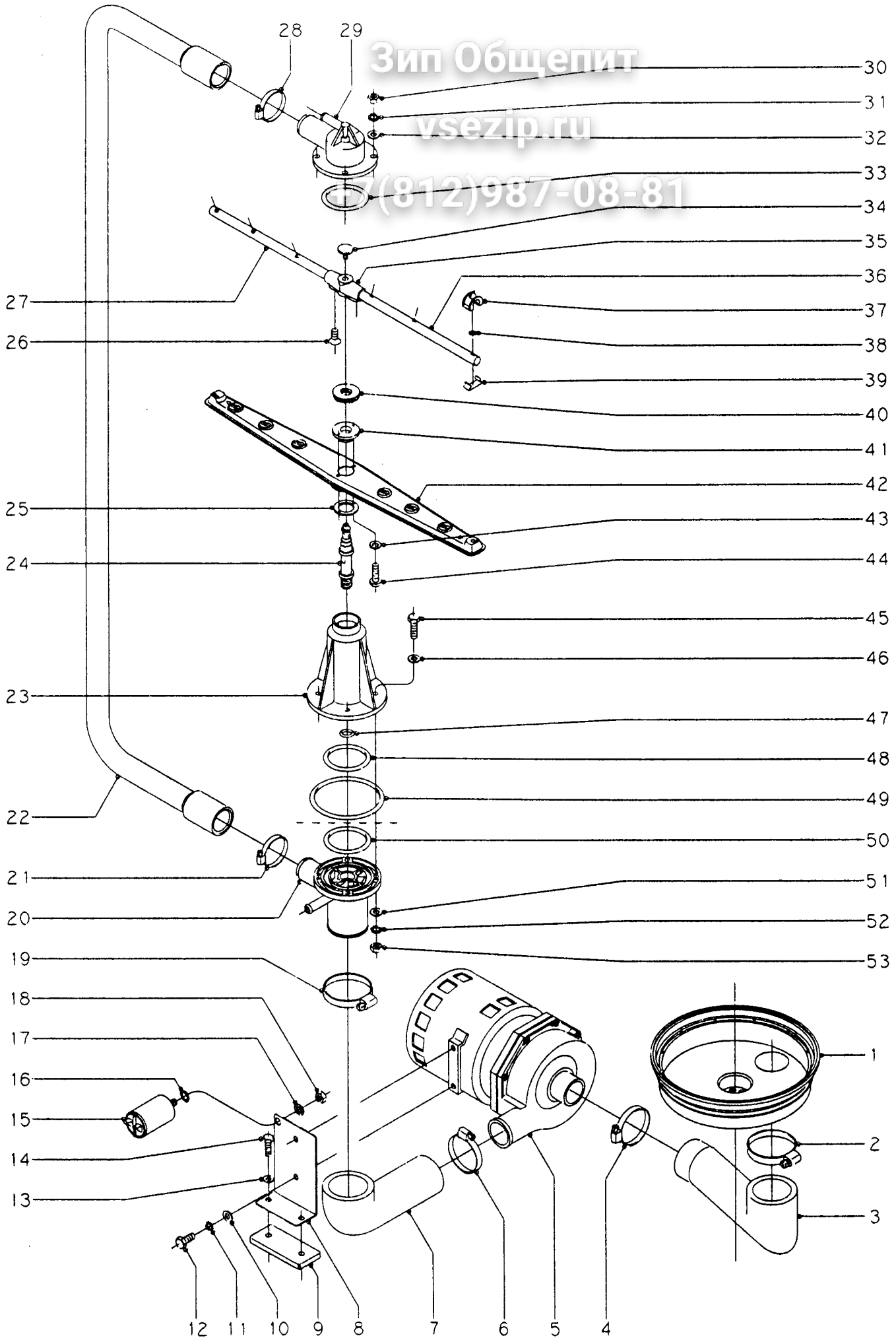
| N°  | CODIGO  | DENOMINACION              | DENOMINATION        | DESCRIPTION             | FI-30 |  |  |
|-----|---------|---------------------------|---------------------|-------------------------|-------|--|--|
| 1   | Q412000 | Remache tubular Ø 4x8     | Rivet Ø 4x8         | Rivet Ø 4x8             | 4     |  |  |
| 2   | Z200545 | Contrapuerta soldada      | Contreporte         | Inner panel for door    | 1     |  |  |
| 3   | Z200541 | Puerta soldada            | Panneau de porte    | External panel for door | 1     |  |  |
| 4   | Z200512 | Asa puerta                | Poignée             | Door handle             | 1     |  |  |
| 5   | Q232030 | Arandela plana A.5        | Rondelle A.5        | Washer A.5              | 2     |  |  |
| 6   | Q262030 | Arandela muelle A.5       | Rondelle A.5        | Washer A.5              | 2     |  |  |
| 7   | Q162030 | Tuerca exagonal M.5       | Ecrou M.5           | Nut M.5                 | 2     |  |  |
| 8   | Z200506 | Imán                      | Aimant              | Magnet                  | 1     |  |  |
| 9   | Z200507 | Protector imán            | Protection d'aimant | Magnet protection       | 1     |  |  |
| 10  | Q012042 | Tornillo exagonal M.6x15  | Vis M.6x15          | Bolt M.6x15             | 4     |  |  |
| 11  | Z400514 | Bisagra izquierda         | Charnière gauche    | Left hinge              | 1     |  |  |
| s/n | Z400515 | Bisagra derecha           | Charnière droite    | Right hinge             | 1     |  |  |
| 12  | Z400516 | Eje puerta                | Axe de porte        | Axle of door            | 2     |  |  |
| 13  | Q232040 | Arandela plana A.6        | Rondelle A.6        | Washer A.6              | 4     |  |  |
| 14  | Q262040 | Arandela muelle A.6       | Rondelle A.6        | Washer A.6              | 4     |  |  |
| 15  | Q162040 | Tuerca exagonal M.6       | Ecrou M.6           | Nut M.6                 | 4     |  |  |
| 16  | Q152005 | Tornillo alomado 4,2x13   | Vis 4,2x13          | Bolt 4,2x13             | 6     |  |  |
| 17  | Z200524 | Macro puerta              | Cadre de porte      | Frame of door           | 2     |  |  |
| 18  | Q308002 | Arandela dubo A.6         | Rondelle A.6        | Washer A.6              | 2     |  |  |
| 19  | Q232040 | Arandela plana A.6        | Rondelle A.6        | Washer A.6              | 2     |  |  |
| 20  | Q062041 | Tornillo alomado M.6x10   | Vis M.6x10          | Bolt M.6x10             | 2     |  |  |
| 21  | Z200521 | Varilla tensor            | Baguette            | Rod                     | 1     |  |  |
| 22  | Z200310 | Soporte tensor            | Support             | Support                 | 2     |  |  |
| 23  | Z200522 | Tensor de puerta          | Tendeur de porte    | Tightener               | 2     |  |  |
| 24  | Q222012 | Tuerca autoblocante M.6   | Ecrou M.6           | Nut M.6                 | 2     |  |  |
| 25  | Q162030 | Tuerca exagonal M.5       | Ecrou M.5           | Nut M.5                 | 4     |  |  |
| 26  | Q262030 | Arandela muelle A.5       | Rondelle A.5        | Washer A.5              | 4     |  |  |
| 27  | Q232030 | Arandela plana A.5        | Rondelle A.5        | Washer A.5              | 4     |  |  |
| 28  | Q152004 | Tornillo aplastado M.5x13 | Vis M.5x13          | Bolt M.5x13             | 4     |  |  |
| 29  | Q162040 | Tuerca exagonal M.6       | Ecrou M.6           | Nut M.6                 | 4     |  |  |
| 30  | Q262040 | Arandela muelle A.6       | Rondelle A.6        | Washer A.6              | 4     |  |  |



Зип Общепит

vsezip.ru

(812)987-08-81



|         |       |       |                    |        |                                 |
|---------|-------|-------|--------------------|--------|---------------------------------|
| N plano | Firma | Fecha | Aparato            | Lamina | Fagor Industrial S. Coop. FAGOR |
| C-462   |       | 7-97  | LAVAVAJILLAS FI-30 | 3      |                                 |



# Зип Ощепит

vsezip.ru

+7(812)987-08-81

**CONCEPTO:** PARTE FUNCIONAL DE LAVADO  
**SUJET:** SYSTEME DE LAVAGE  
**CONCEPT:** WASHING SYSTEM

**LAMINAN°**  
**VUE N°**  
**ILUSTR. N.**

3

**APARATO - APPAREIL - APPLIANCE:** LAVAVAJILLAS - LAVEVAISSELLES - DISH WASHING MACHINE

**MODELO Y CANTIDAD - MOD. I**

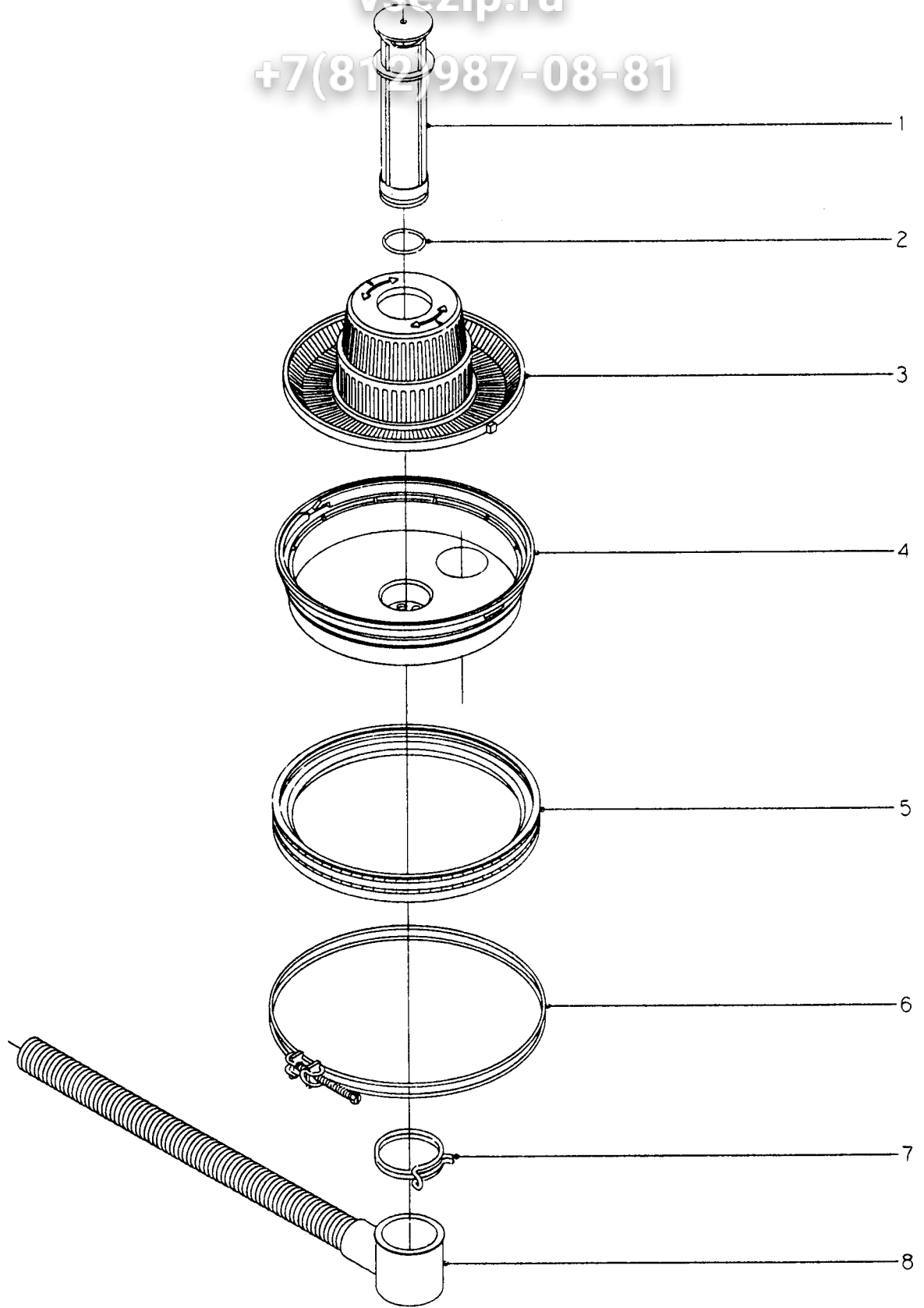
| N°  | CODIGO  | DENOMINACION                  | DENOMINATION                     | DESCRIPTION              | FI-30 |  |  |
|-----|---------|-------------------------------|----------------------------------|--------------------------|-------|--|--|
| 1   | Z200906 | Cubeta                        | Cuve                             | Tank                     | 1     |  |  |
| 2   | Q881324 | Abrazadera 50-70              | Collier 50-70                    | Worm clamp 50-70         | 1     |  |  |
| 3   | Z200904 | Codo aspiración               | Coude aspiration                 | Suction elbow            | 1     |  |  |
| 4   | Q881307 | Abrazadera 40-60              | Collier 40-60                    | Worm clamp 40-60         | 1     |  |  |
| 5   | Z201011 | Bomba de lavado (230V 50Hz)   | Pompe de lavage (230V 50Hz)      | Washing pump (230V 50Hz) | 1     |  |  |
| 5   | Z203511 | Bomba de lavado (230V 60Hz)   | Pompe de lavage (230V 60Hz)      | Washing pump (230V 60Hz) | 1     |  |  |
| s/n | Z201081 | Conjunto junta y retén        | Ensemble joint-bague d'étanchéi. | Joint-retainer           | 1     |  |  |
| s/n | Z201082 | Turbina 50 Hz. (Ø 88 mm)      | Turbine 50 Hz. (Ø 88 mm)         | Turbine 50 Hz. (Ø 88 mm) | 1     |  |  |
| s/n | Z203571 | Turbina 60 Hz. (Ø 77 mm)      | Turbine 60 Hz. (Ø 77 mm)         | Turbine 60 Hz. (Ø 77 mm) | 1     |  |  |
| 6   | Q881307 | Abrazadera 40-60              | Collier 40-60                    | Worm clamp 40-60         | 1     |  |  |
| 7   | Z200905 | Codo impulsión                | Coude d'impulsion                | Impulsion elbow          | 1     |  |  |
| 8   | Z201002 | SopORTE motobomba             | Support de pompe                 | Pump support             | 1     |  |  |
| 9   | Z201003 | Base bomba lavado             | Base de pompe                    | Pump base                | 1     |  |  |
| 10  | Q232040 | Arandela plana A.6            | Rondelle A.6                     | Washer A.6               | 2     |  |  |
| 11  | Q262040 | Arandela muelle A.6           | Rondelle A.6                     | Washer A.6               | 2     |  |  |
| 12  | Q012041 | Tornillo exagonal M.6x10      | Vis M.6x10                       | Bolt M.6x10              | 2     |  |  |
| 13  | Q232030 | Arandela plana A.5            | Rondelle A.5                     | Washer A.5               | 2     |  |  |
| 14  | Q012033 | Tornillo exagonal M.5x20      | Vis M.5x20                       | Bolt M.5x20              | 2     |  |  |
| 15  | V321300 | Condensador 10 uF             | Condensateur                     | Condenser                | 1     |  |  |
| 16  | Q307048 | Junta tórica                  | Joint                            | Joint                    | 1     |  |  |
| 17  | Q242050 | Arandela abanico A.8          | Rondelle A.8                     | Washer A.8               | 1     |  |  |
| 18  | Q162050 | Tuerca exagonal M.8           | Ecrou M.8                        | Nut M.8                  | 1     |  |  |
| 19  | Q881324 | Abrazadera 50-70              | Collier 50-70                    | Worm clamp 50-70         | 1     |  |  |
| 20  | Z200703 | Pasamuros                     | Passe-murs                       | Support                  | 1     |  |  |
| 21  | Q881305 | Abrazadera 25-40              | Collier 25-40                    | Worm clamp 25-40         | 1     |  |  |
| 22  | Z200706 | Arbol de lavado               | Conduite de lavage               | Washing conduit          | 1     |  |  |
| 23  | Z200701 | SopORTE distribuidor inferior | Support                          | Support                  | 1     |  |  |
| 24  | Z200704 | Eje central                   | Axe                              | Axle                     | 2     |  |  |
| 25  | Z650711 | Amarre enganche distribuidor  | Rondelle de fixation             | Fastening washer         | 2     |  |  |
| 26  | Q152024 | Tornillo avellanado M.4x8     | Vis M.4x8                        | Bolt M.4x8               | 4     |  |  |
| 27  | Z201902 | Rama aclarado izquierda       | Branche de rinçage gauche        | Left rinsing branch      | 2     |  |  |



Зип Общепит

vsezip.ru

+7(812)987-08-81



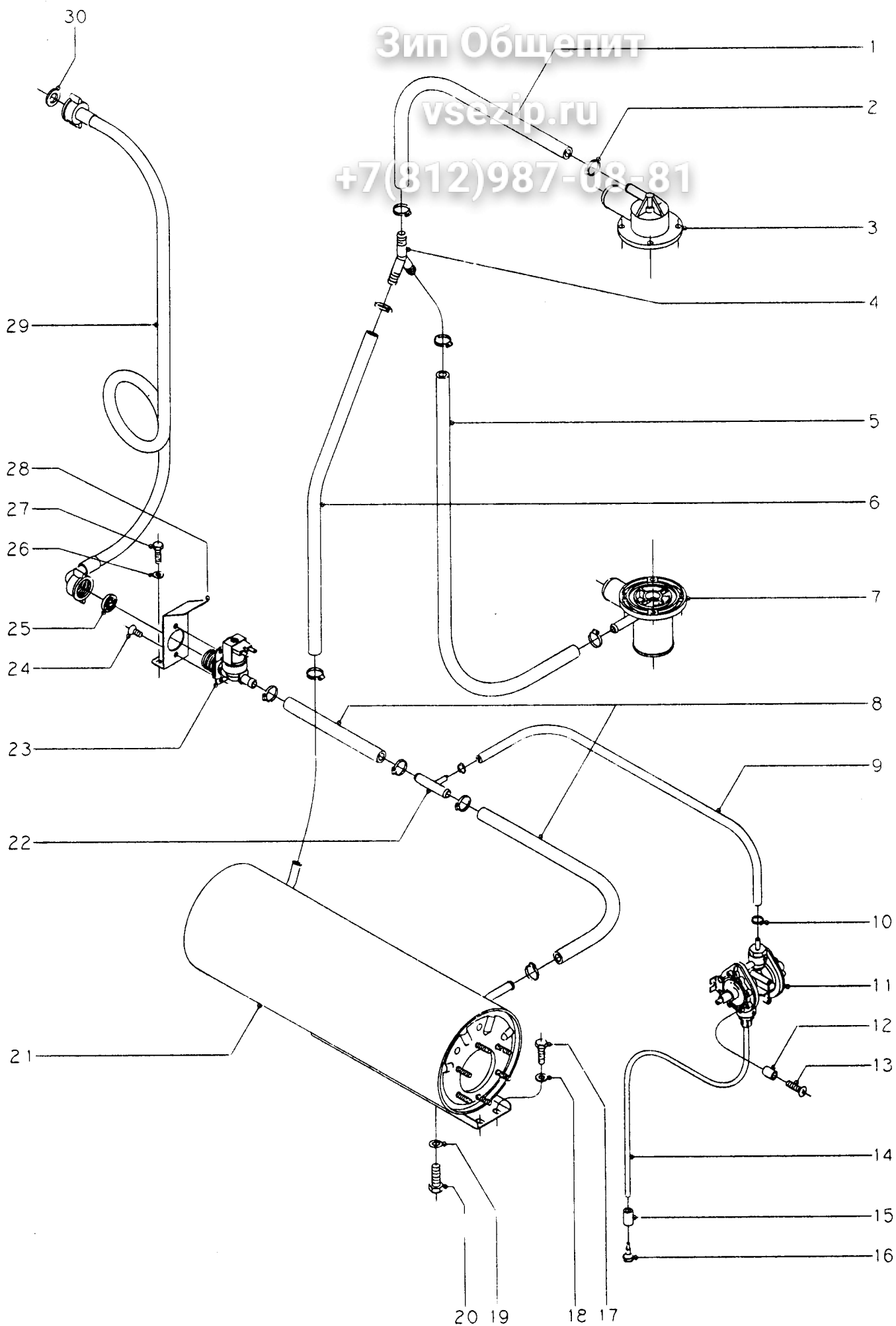
|         |       |       |                    |         |                         |
|---------|-------|-------|--------------------|---------|-------------------------|
| N plano | Firma | Fecha | Aparato            | Laminas | Fagor Industrial S Coop |
| C-463   |       | 7-97  | LAVAVAJILLAS FI-30 | 4       | <b>FAGOR</b>            |
|         |       |       |                    |         | Orate                   |



Зип Общепит

vsezip.ru

+7(812)987-08-81



|         |       |       |                    |        |                                       |
|---------|-------|-------|--------------------|--------|---------------------------------------|
| N plano | Firma | Fecha | Aprobado           | Lamina | Fagor Industrial S.Coop. <b>FAGOR</b> |
| C-464   |       | 7-97  | LAVAVAJILLAS FI-30 | 5      | Дата                                  |

# Зип Общепит

vsezip.ru

+7(812)987-08-81

**CONCEPTO:** PARTE FUNCIONAL DEL ACLARADO  
**SUJET:** SYSTEME DE RINÇAGE  
**CONCEPT:** RINSING SYSTEM

**LAMINAN°**  
**VUE N°**  
**ILUSTR. N.**

5

**APARATO - APPAREIL - APPLIANCE:** LAVAVAJILLAS - LAVEVAISSELLES - DISH WASING MACHINE

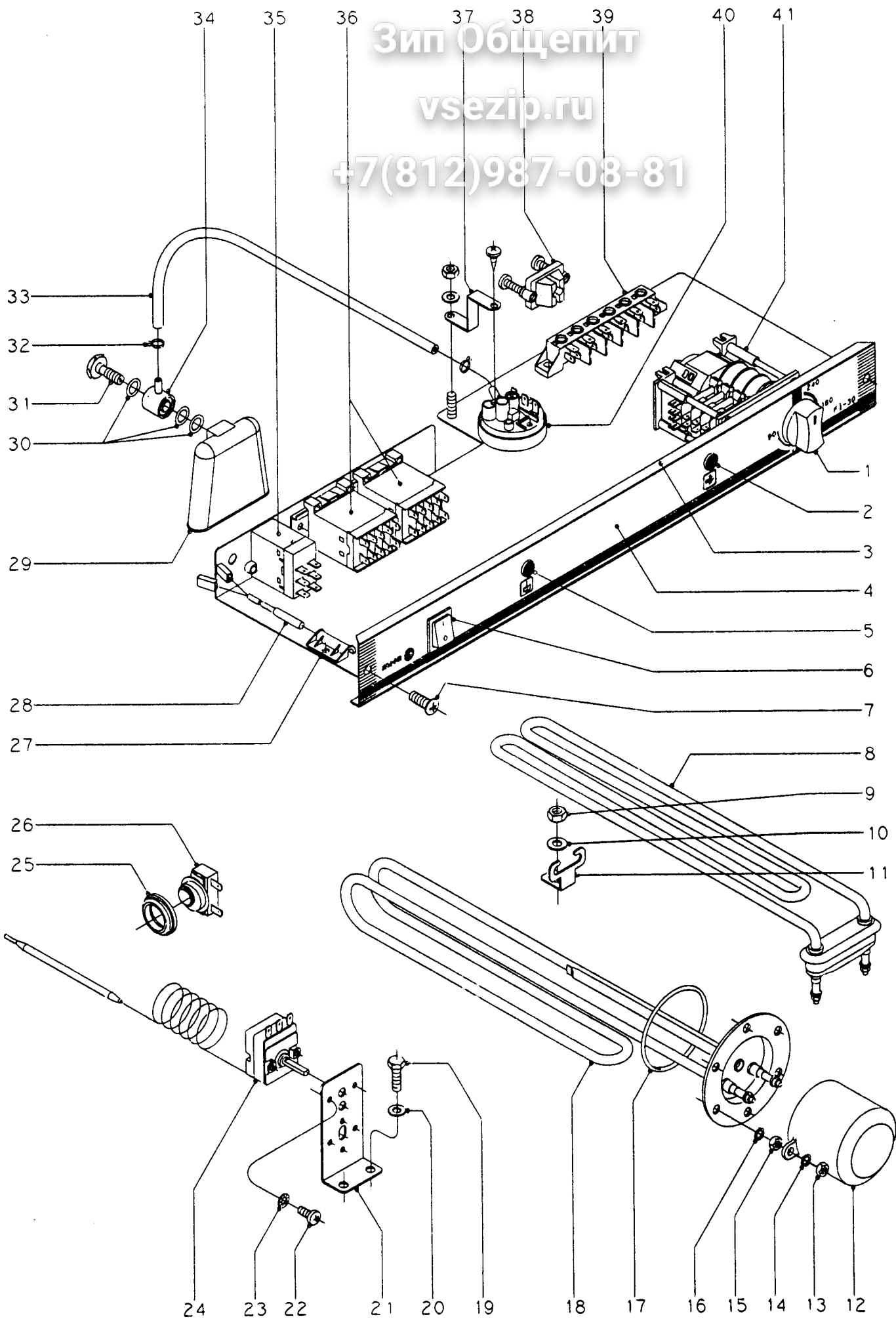
**MODELO Y CANTIDAD - MOD. I**

| N° | CODIGO  | DENOMINACION                    | DENOMINATION                  | DESCRIPTION                    | FI-30 |  |  |
|----|---------|---------------------------------|-------------------------------|--------------------------------|-------|--|--|
| 1  | Z201105 | Tubo de goma Ø10xØ17x360        | Tube caoutchouc Ø10xØ17x360   | Rubber tube Ø10xØ17x360        | 1     |  |  |
| 2  | Q881302 | Abrazadera 12-20                | Collier 12-20                 | Worm clamp 12-20               | 10    |  |  |
| 3  | Z200707 | Soporte distribuidor superior   | Support distributeursuperieur | Upper distributor support      | 1     |  |  |
| 4  | Z201106 | Racord en Y                     | Raccord en Y                  | Union Y                        | 1     |  |  |
| 5  | Z201103 | Tubo de goma Ø10xØ17x780        | Tube caoutchouc Ø10xØ17x780   | Rubber tube Ø10xØ17x780        | 1     |  |  |
| 6  | Z201104 | Tubo de goma Ø10xØ17x560        | Tube caoutchouc Ø10xØ17x560   | Rubber tube Ø10xØ17x560        | 1     |  |  |
| 7  | Z200703 | Pasamuros                       | Passe-murs                    | Cross part                     | 1     |  |  |
| 8  | Z201102 | Tubo de goma Ø10xØ17x80         | Tube caoutchouc Ø10xØ17x80    | Rubber tube Ø10xØ17x80         | 2     |  |  |
| 9  | Z201109 | Tubo termaprés Ø5xØ10,5x450     | Tube caoutchouc Ø5xØ10,5x450  | Rubber tube Ø5xØ10,5x450       | 1     |  |  |
| 10 | Q881308 | Abrazadera 8-14                 | Collier 8-14                  | Worm clamp 8-14                | 2     |  |  |
| 11 | Z651123 | Dosificador tensoactivo         | Dosseur liquide tensio-actif  | Doser of capillary activator   | 1     |  |  |
| 12 | Z203007 | Casquillo                       | Douille                       | Collar                         | 2     |  |  |
| 13 | Q041324 | Tornillo avellanado M.4x25      | Vis M.4x25                    | Bolt M.4x25                    | 2     |  |  |
| 14 | Z230903 | Conducto tensoactivo Ø6xØ4x1500 | Conduit liq.tens.Ø6xØ4x1500   | Capil.activ.ductØ6xØ4x1500     | 1     |  |  |
| 15 | Z701152 | Peso filtro                     | Poids filtre                  | Filter weight                  | 1     |  |  |
| 16 | Z601153 | Filtro aspiración tensoactivo   | Filtre                        | Filter                         | 1     |  |  |
| 17 | Q012031 | Tornillo exagonal M.5x10        | Vis M.5x10                    | Bolt M.5x10                    | 2     |  |  |
| 18 | Q232030 | Arandela plana A.5              | Rondelle A.5                  | Washer A.5                     | 2     |  |  |
| 19 | Q307048 | Junta tórica Ø9,12xØ16,18x3,53  | JointØ9,12xØ16,18x3,53        | JointØ9,12xØ16,18x3,53         | 1     |  |  |
| 20 | Q012063 | Tornillo exagonal M.10x20       | Vis M.10x20                   | Bolt M.10x20                   | 1     |  |  |
| 21 | Z201701 | Cuerpo calderín                 | Corps chaudière               | Boiler body                    | 1     |  |  |
| 22 | Z601157 | Toma presión                    | Prise de pression             | Pressure tap                   | 1     |  |  |
| 23 | Z701135 | Electroválvula entrada agua     | Electrovanne entrée eau       | Electric valve for water entry | 1     |  |  |
| 24 | Q152024 | Tornillo avellanado M.4x8       | Vis M.4x8                     | Bolt M.4x8                     | 2     |  |  |
| 25 | Z701132 | Filtro junta                    | Filtre                        | Filter                         | 1     |  |  |
| 26 | Q232030 | Arandela plana A.5              | Rondelle A.5                  | Washer A.5                     | 2     |  |  |
| 27 | Q012031 | Tornillo exagonal M.5x10        | Vis M.5x10                    | Bolt M.5x10                    | 2     |  |  |
| 28 | Z201101 | Escuadra amarre electroválvula  | Equerre fixation electrovanne | Electric valve fastening frame | 1     |  |  |
| 29 | Z602121 | Manguera entrada agua           | Entrée d'eau                  | Pipe                           | 1     |  |  |
| 30 | Q307031 | Arandela junta                  | Rondelle joint                | Joint washer                   | 1     |  |  |

Зип Общепит

vsezip.ru

+7(812)987-08-81



|                  |                         |               |                               |             |   |
|------------------|-------------------------|---------------|-------------------------------|-------------|---|
| N plano<br>C-465 | Firma<br><i>Dimitry</i> | Fecha<br>7-97 | Aparato<br>LAVAVAJILLAS FI-30 | Lamina<br>6 | Fagor Industrial S. Coop. <b>FAGOR</b><br>Okate |
|------------------|-------------------------|---------------|-------------------------------|-------------|---|

# Зип Общепит

vsezip.ru

+7(812)987-08-81

**CONCEPTO:** PARTE FUNCIONAL ELECTRICA  
**SUJET:** SYSTEME ELECTRIQUE  
**CONCEPT:** ELECTRICAL SYSTEM

**LAMINAN°**  
**VUE N°**  
**ILUSTR. N.**

6

**APARATO - APPAREIL - APPLIANCE:** LAVAVAJILLAS - LAVEVAISSELLES - DISH WASHING MACHINE

**MODELO Y CANTIDAD - MOD. I**

| N° | CODIGO  | DENOMINACION                    | DENOMINATION                  | DESCRIPTION                  | FI-30 |  |  |
|----|---------|---------------------------------|-------------------------------|------------------------------|-------|--|--|
| 1  | R663062 | Botón de mando                  | Bouton de commutateur         | Knob                         | 1     |  |  |
| 2  | Z203005 | Piloto ambar                    | Témoin ambar                  | Lamp ambar                   | 1     |  |  |
| 3  | Z202907 | Frente extraible                | Front                         | Front                        | 1     |  |  |
| 4  | Z202909 | Embelledor adhesivo             | Plaque adhesive               | Adhesive plate               | 1     |  |  |
| 5  | Z203004 | Piloto verde                    | Témoin vert                   | Green lamp                   | 1     |  |  |
| 6  | Z203033 | Interruptor general             | Interrupteur                  | Switch                       | 1     |  |  |
| 7  | Q152004 | Tornillo aplastado M.5x13       | Vis M.5x13                    | Bolt M.5x13                  | 2     |  |  |
| 8  | Z203601 | Resistencia tanque              | Résistance cuve               | Tank heating element         | 1     |  |  |
| 9  | Q162040 | Tuerca exagonal M.6             | Ecrou M.6                     | Nut M.6                      | 1     |  |  |
| 10 | Q232040 | Arandela plana A.6              | Rondelle A.6                  | Washer A.6                   | 1     |  |  |
| 11 | Z603602 | Soporte resistencia tanque      | Support résistance cuve       | Tank heating element support | 1     |  |  |
| 12 | Z651731 | Caperuza resistencia calderín   | Chapeau résistance chaudière  | Boiler resistance hood       | 1     |  |  |
| 13 | Q162040 | Tuerca exagonal M.6             | Ecrou M.6                     | Nut M.6                      | 2     |  |  |
| 14 | Q262040 | Arandela muelle A.6             | Rondelle A.6                  | Washer A.6                   | 2     |  |  |
| 15 | Q162040 | Tuerca exagonal M.6             | Ecrou M.6                     | Nut M.6                      | 6     |  |  |
| 16 | Q262040 | Arandela muelle A.6             | Rondelle A.6                  | Washer A.6                   | 6     |  |  |
| 17 | Q307035 | Junta tórica AN-36              | Joint torique AN-36           | O-ring seal AN-36            | 1     |  |  |
| 18 | Z201706 | Resistencia calderín            | Résistance chaudière          | Boiler resistance            | 1     |  |  |
| 19 | Q012031 | Tornillo exagonal M.5x10        | Vis M.5x10                    | Bolt M.5x10                  | 2     |  |  |
| 20 | Q232030 | Arandela plana A.5              | Rondelle A.5                  | Washer A.5                   | 2     |  |  |
| 21 | Z203016 | Soporte termostato              | Support thermostat            | Thermostat support           | 1     |  |  |
| 22 | Q153111 | Tornillo alomado M.4x8          | Vis M.4x8                     | Bolt M.4x8                   | 2     |  |  |
| 23 | Q242020 | Arandela abanico A.4            | Rondelle A.4                  | Washer A.4                   | 2     |  |  |
| 24 | Z203014 | Termostato calderín             | Thermostat chaudière          | Thermostat boiler            | 1     |  |  |
| 25 | N503017 | Soporte termostato              | Support thermostat            | Thermostat support           | 1     |  |  |
| 26 | Z653013 | Termostato doble ( tanque )     | Thermostat cuve               | Tank thermostat              | 1     |  |  |
| 27 | Z203010 | Amarre interruptor magnético    | Fixation interrupteur magnet. | Fastening for magnet switch  | 1     |  |  |
| 28 | Z203009 | Interruptor magnético           | Interrupteur magnetique       | Magnet switch                | 1     |  |  |
| 29 | Z203011 | Cámara presostato               | Chambre pressostat            | Presostat chamber            | 1     |  |  |
| 30 | Q307003 | Junta tórica Ø16,01xØ10,77x2,62 | JointØ16,01xØ10,77x2,62       | JointØ16,01xØ10,77x2,62      | 3     |  |  |
| 31 | Z203013 | Tornillo presostato             | Vis presostat                 | Pressostat bolt              | 1     |  |  |

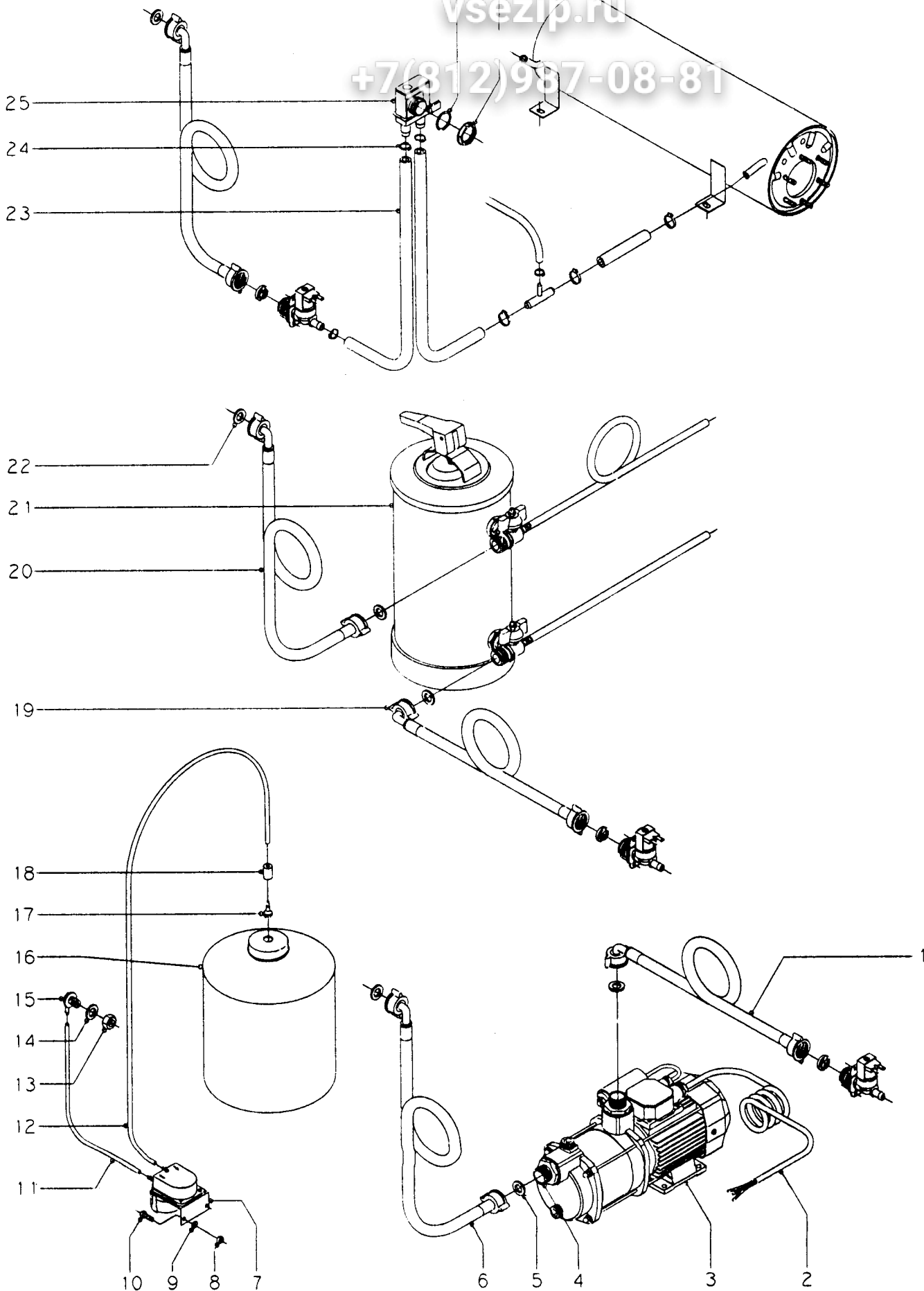




26 27  
Зип Общепит

vsezip.ru

+7(812)987-08-81



|                  |                             |               |                                    |             |   |
|------------------|-----------------------------|---------------|------------------------------------|-------------|---|
| N plano<br>C-466 | Firno<br><i>[Signature]</i> | Fecha<br>7-97 | Aparato<br>ACCESORIOS LAVAVAJILLAS | Lamina<br>— | Fagor Industrial S.Coop. <b>FAGOR</b><br>Date |
|------------------|-----------------------------|---------------|------------------------------------|-------------|---|









