

LAVASTOVIGLIE A CARICA FRONTALE
FRONT LOADING DISHWASHER**LU7 / WTU40**

| Code | Type | Ref. | Pagina/ Page |
|------|------|------|-----------------|
|------|------|------|-----------------|

PRESSIONE

| | | | |
|--------|----------|---|---------|
| 503020 | LU7PDP | a | 2 3 6 8 |
| 503023 | WTU40PDP | b | 2 3 6 8 |
| 698033 | LU700PDP | c | 2 3 6 8 |

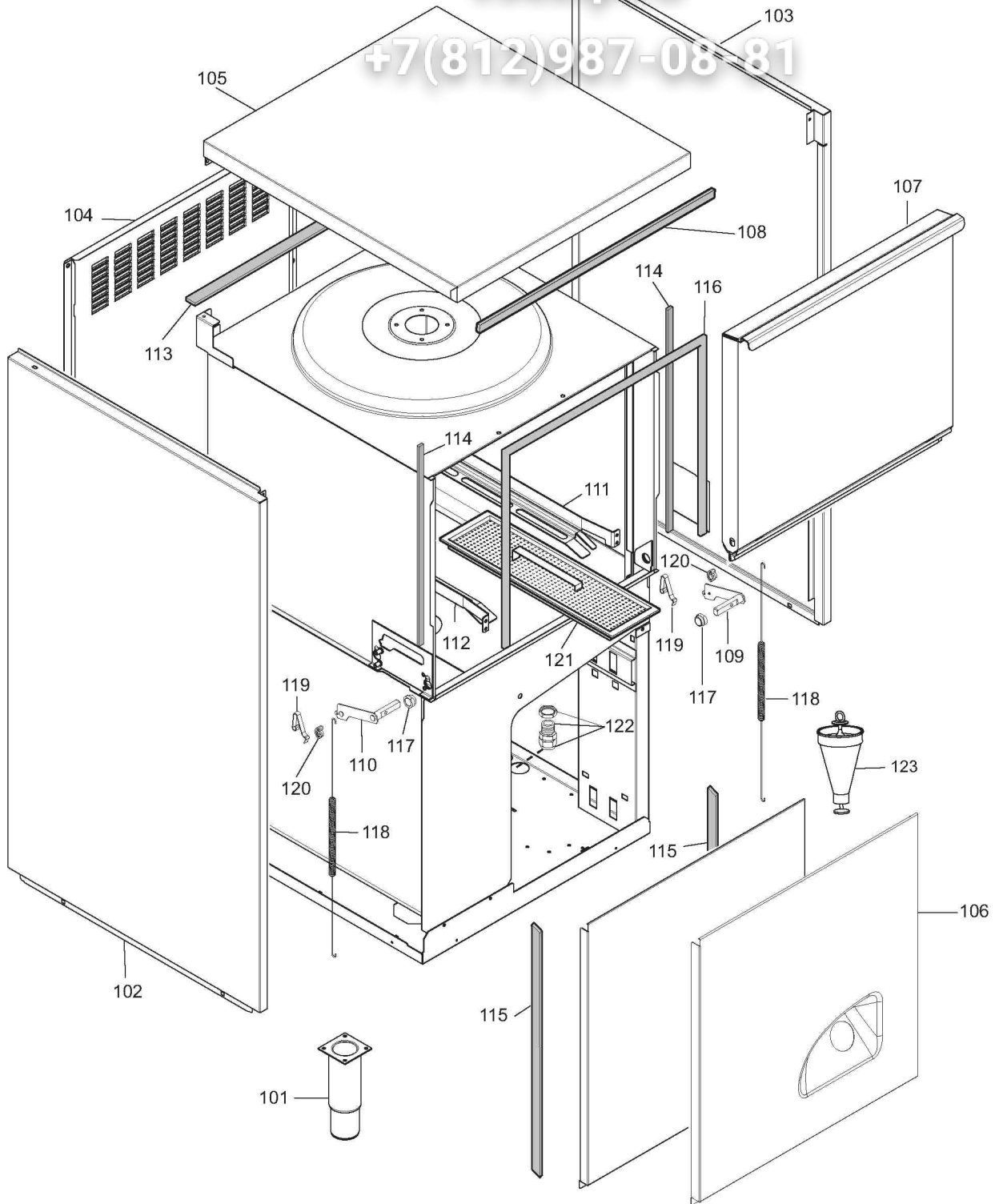
ATMOSFERICA

| | | | |
|--------|------------|---|---------|
| 503021 | LU7ADP | d | 2 3 5 8 |
| 503022 | LU7ADPWS | i | 2 4 7 8 |
| 503024 | WTU40ADP | e | 2 3 5 8 |
| 503025 | WTU40ADPWS | l | 2 4 7 8 |
| 503026 | WTU40ADPD | g | 2 3 5 8 |
| 698019 | ET7ADP | h | 2 3 5 8 |
| 698034 | LU700ADP | f | 2 3 5 8 |
| 698037 | LU700ADPWS | m | 2 4 7 8 |

Pagina/ Page**Indice/ index**

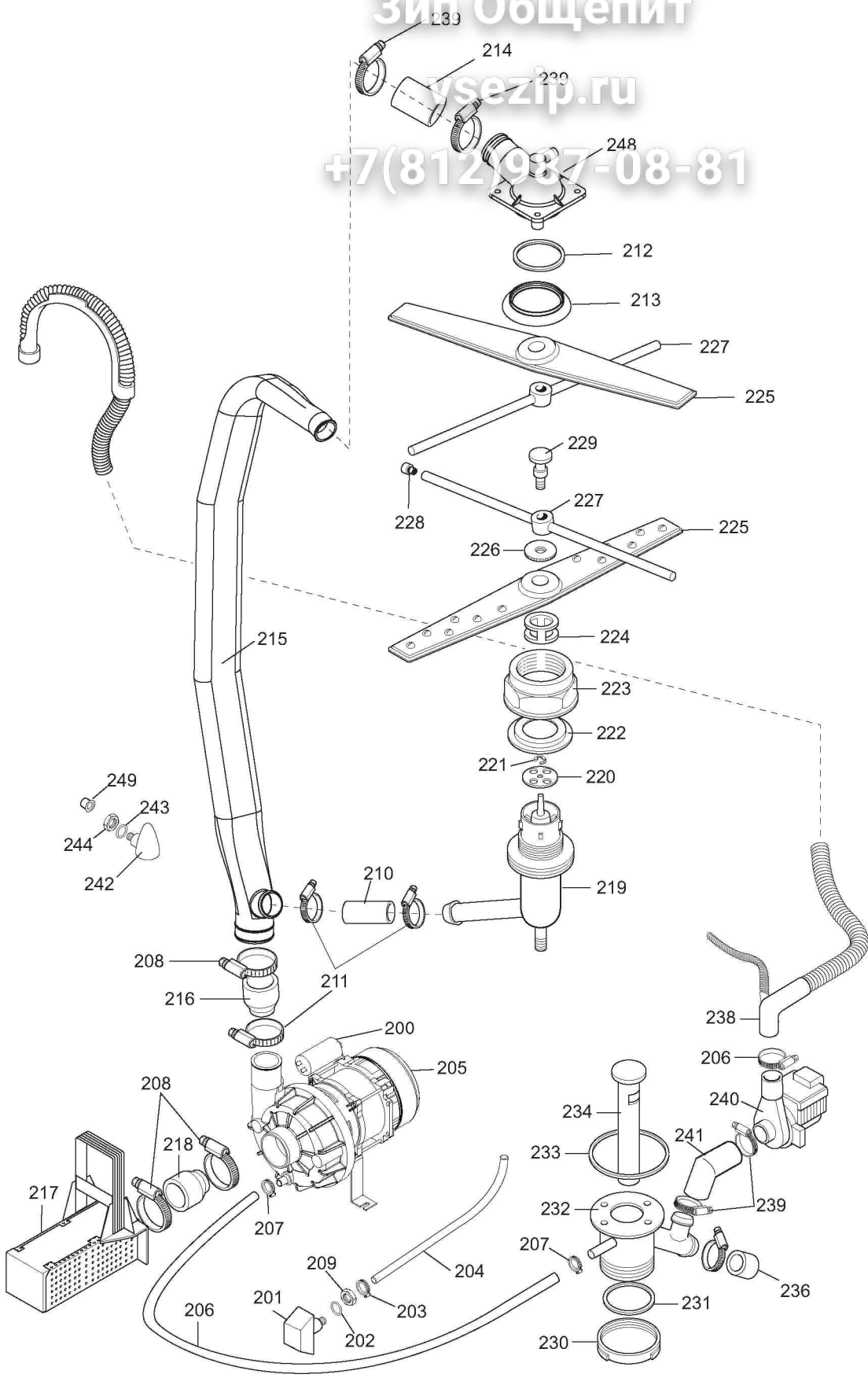
| | |
|--------|--|
| 2 | Vista generale / Main view |
| 3 | Componenti idraulici (non per "i,l,m") / Hydraulic components (not for "i,l,m") |
| 4 | Componenti idraulici (solo per "i,l,m") / Hydraulic components (only for "i,l,m") |
| 5 | Circuito idraulico atmosferico / Atmospheric plumbing circuit |
| 6 | Circuito idraulico a pressione / Pressurized plumbing circuit |
| 7 | Circuito idraulico WS (solo per "i,l,m") / Hydraulic circuit WS (only for "i,l,m") |
| 8 | Componenti elettrici / Electrical components |
| 9 - 17 | Lista ricambi / Spare parts list |

Marchio/ Brand: Z - A - E**Paese/ Country: Tutti/ All**

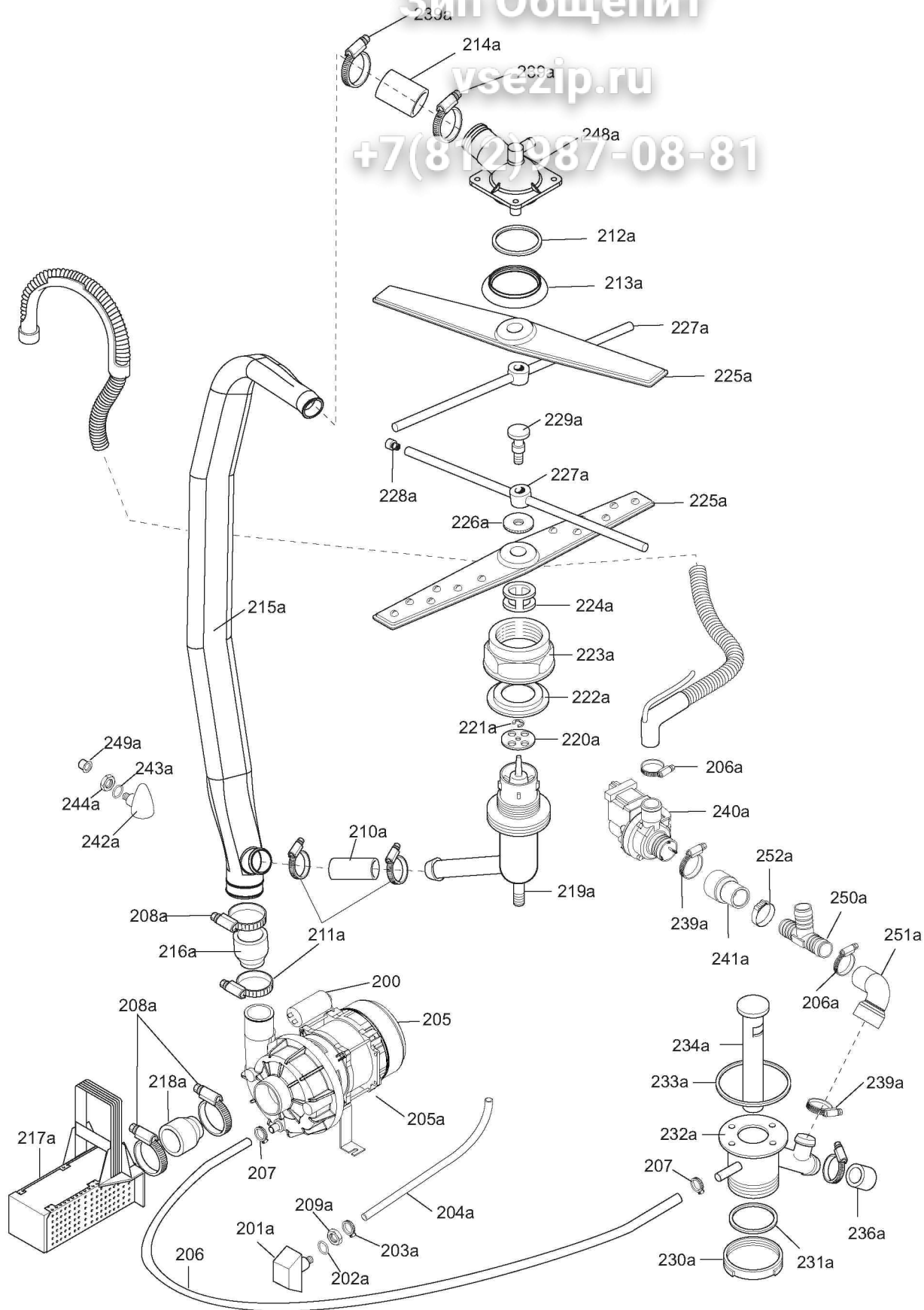


ill. 622001p1

Vista generale / Main view

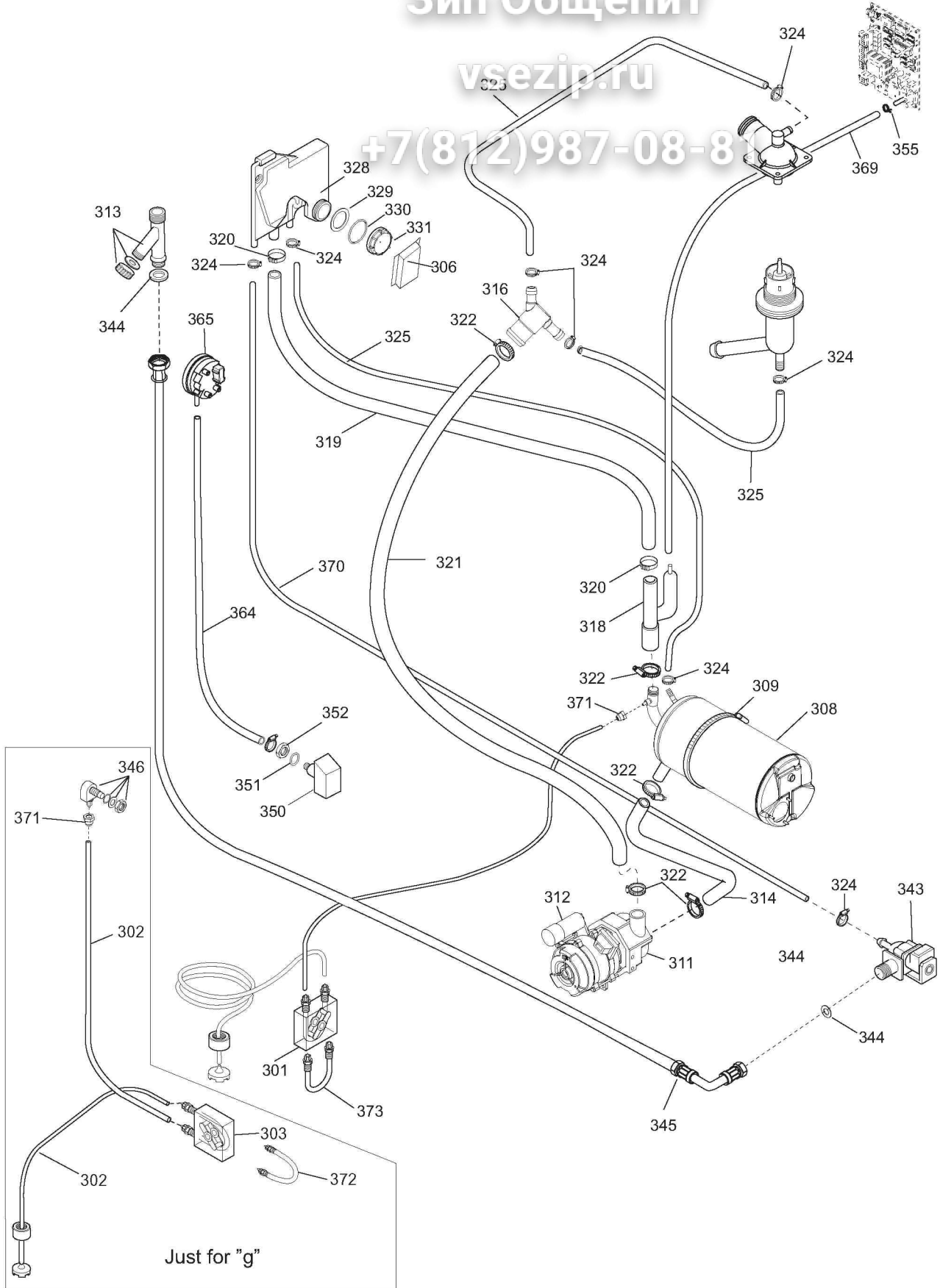


ill. 622001p2
Componenti idraulici (non per "i,l,m") / Hydraulic components (not for "i,l,m")



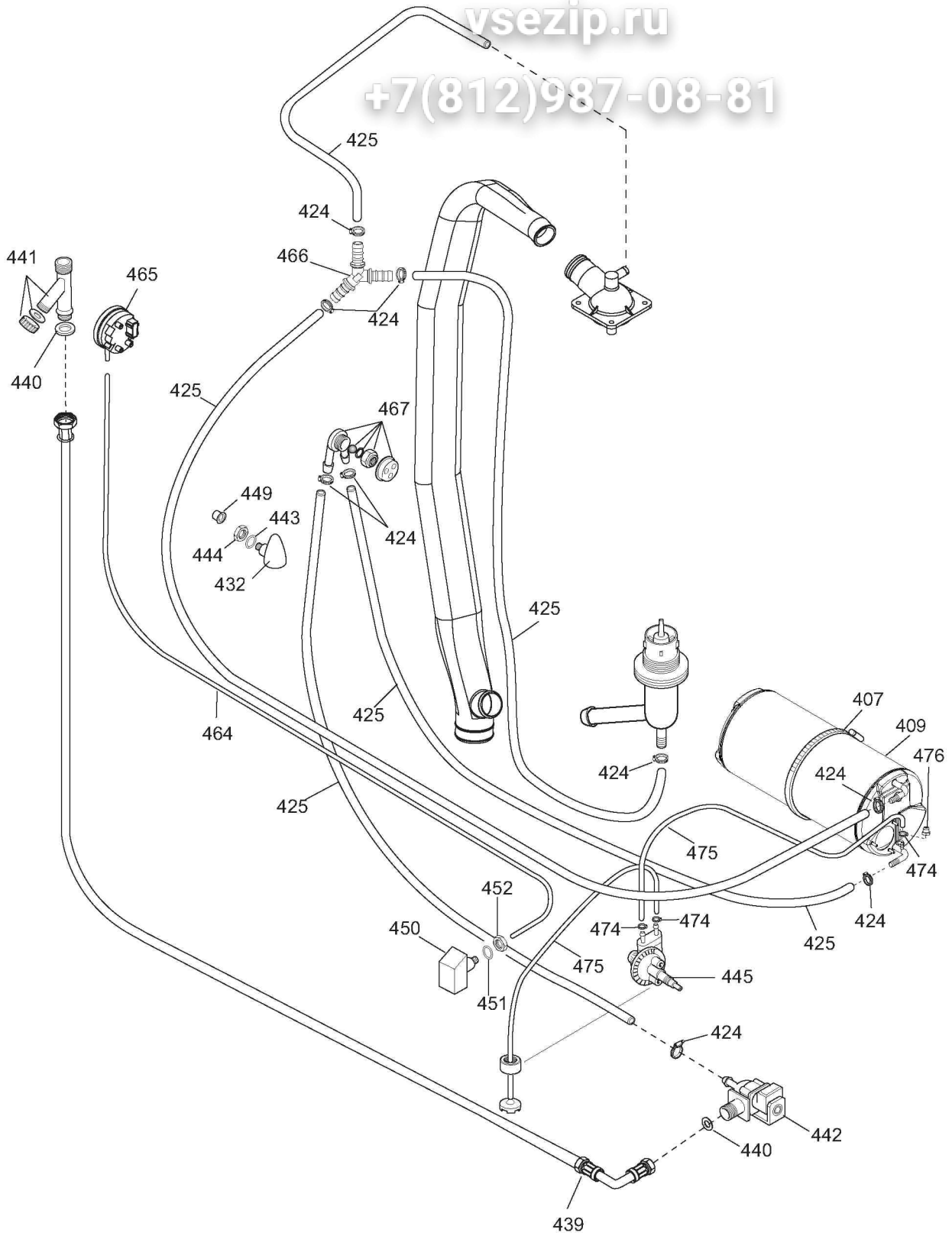
ill. 622001p2WS

Componenti idraulici (solo per "i,l,m") / Hydraulic components (only for "i,l,m")



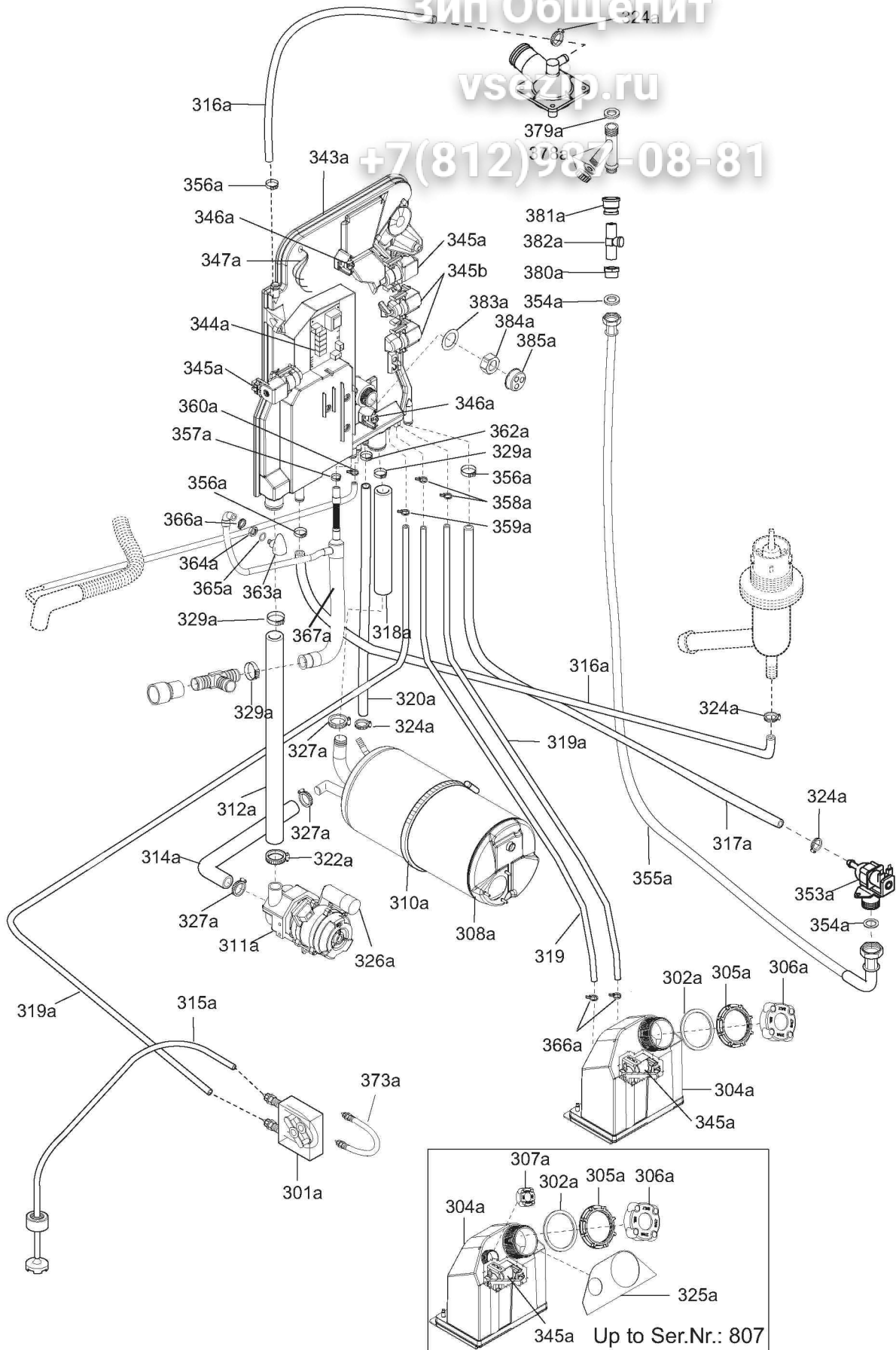
ill. 622001p3

Circuito idraulico atmosferico / Atmospheric plumbing circuit



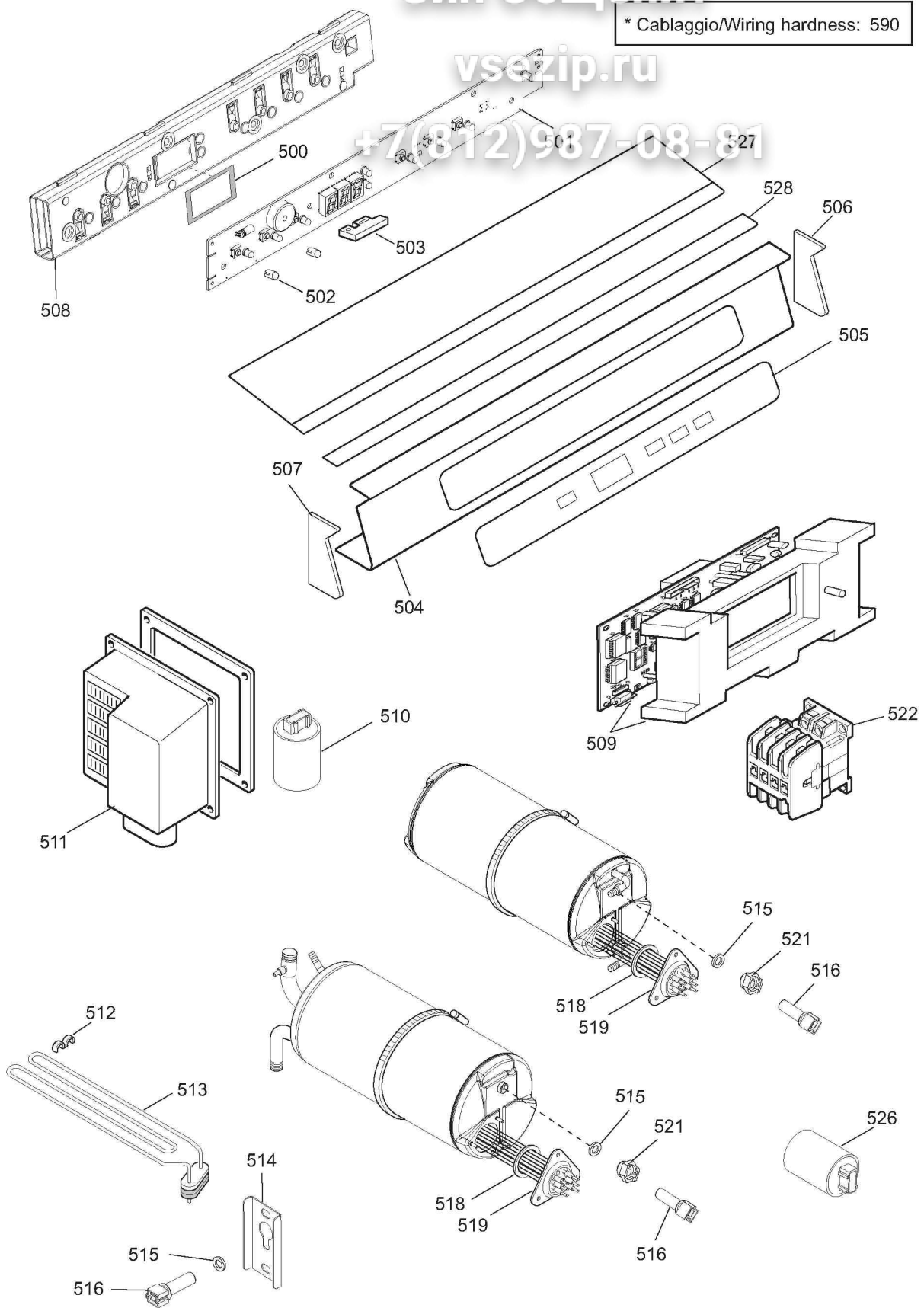
ill. 622001p4

Circuito idraulico a pressione / Pressurized plumbing circuit



ill. 622001p3WS

Circuito idraulico WS (solo per "i,l,m") / Hydraulic circuit WS (only for "i,l,m")



ill. 622001Ap5
Componenti elettrici / Electrical components