

 ADAFP-1602 T RI / 19029005

 ADAEP-1602 T RI / 19030763

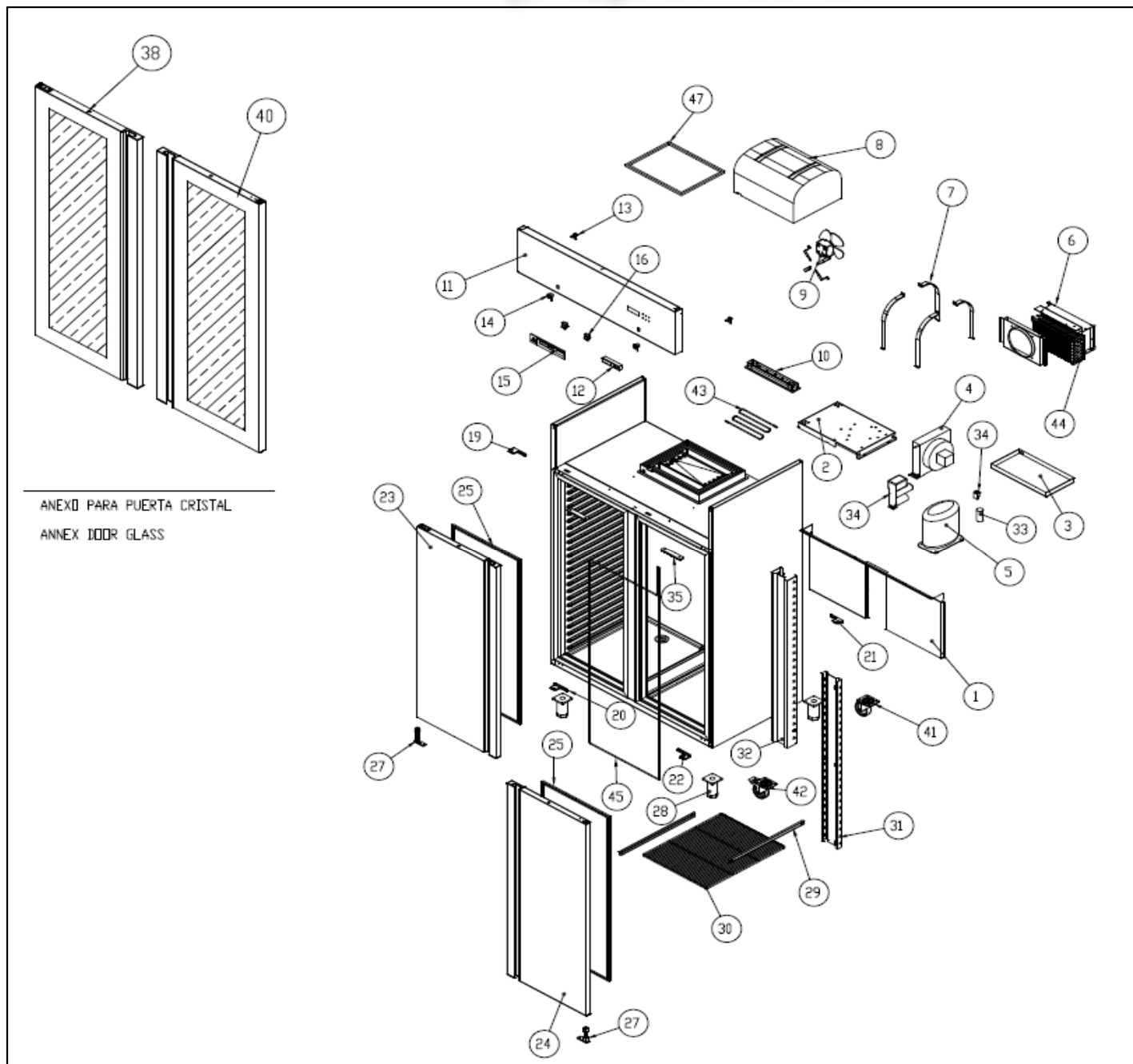
 ADAFN-1602 T RI / 19029006

Зип Ощепит

vsezip.ru

+7(812)987-08-81

Versión 2014-06



ANEXO PARA PUERTA CRISTAL  
ANNEX DOOR GLASS

 ADAFP-1602 T RI / 19029005

 ADAEP-1602 T RI / 19030763

 ADAFN-1602 T RI / 19029006

Versión 2014-06

| Nº  | CODE<br>CÓDIGO | RECOM. | DESCRIPTION                            | DESCRIPCIÓN                          | +7(812)987-08-81 |            |            |
|-----|----------------|--------|--|--------------------------------------|------------------|------------|------------|
|     |                |        |  |                                      | ADAFP-1602       | ADAEP-1602 | ADAFN-1602 |
| 1   | 12069770       |        | DEFLECTOR DE AIRE DERECHO              | RIGHT AIR DEFLECTOR                  | 1                | 1          | 1          |
| 1   | 12069771       |        | DEFLECTOR DE AIRE IZQUIERDO            | AIR DEFLECTOR LEFT                   | 1                | 1          | 1          |
| 2   | 12035524       |        | BANCADA UNIDAD CONDENSADORA            | BANCADA CONDENSING UNIT              | 1                | 1          |            |
| 2   | 12088042       |        | BANCADA UNIDAD CONDENSADORA            | BANCADA CONDENSING UNIT              |                  |            | 1          |
| 3   | 12035462       |        | BANDEJA EVAPORACIÓN AUTOMÁTICA         | AUTO PAN EVAPORATION                 | 1                | 1          |            |
| 3   | 12088077       |        | BANDEJA EVAPORACIÓN AUTOMÁTICA         | AUTO PAN EVAPORATION                 |                  |            | 1          |
| 4   | 12030332       |        | CONDENSADOR DOS CUERPOS POSITIVO       | CAPACITOR POSITIVE TWO BODIES        | 1                | 1          |            |
| 4   | 12030739       |        | CONDENSADOR DOS CUERPOS NEGATIVO       | CAPACITOR NEGATIVE TWO BODIES        |                  |            | 1          |
| 5   | 12059135       |        | COMPRESOR POSITIVO DOS CUERPOS R-290   | POSITIVE TWO BODIES COMPRESSOR R-290 | 1                | 1          |            |
| 5   | 12025931       |        | COMPRESOR DOS CUERPOS NEGATIVO R-404 a | NEGATIVE TWO BODIES COMPRESSOR R-404 |                  |            | 1          |
| 6   | 12083705       |        | UND. EVAPORADORA DOS CUERPOS POSITIVO  | UND. EVAPORATOR POSITIVE TWO BODIES  | 1                | 1          |            |
| 6   | 12083718       |        | UND. EVAPORADORA DOS CUERPOS NEGATIVO  | UND. EVAPORATOR NEGATIVE TWO BODIES  |                  |            | 1          |
| 7   | 12084281       |        | CONJUNTO FIJACIÓN ENVOLVENTE           | SURROUND FIXING SET                  | 1                | 1          | 1          |
| 8   | 12067447       |        | ENVOLVENTE UNIDAD EVAPORADORA          | EVAPORATOR HOUSING UNIT              | 1                | 1          | 1          |
| 9   | 12034545       |        | VENTILADOR 5w                          | FAN 5w                               | 1                | 1          |            |
| 9   | 12038161       |        | VENTILADOR 10 w                        | FAN 10w                              |                  |            | 1          |
| 9*  | 12058694       |        | ASPA VENTILADOR EVAPORADOR             | ASPA EVAPORATOR FAN                  | 1                | 1          |            |
| 10  | 12037035       |        | REJILLA ENTRADA AIRE                   | AIR INLET GRILLE                     | 1                | 1          | 1          |
| 11  | 12110147       |        | CABEZA ARMARIO DOS CUERPOS             | HEAD CABINET TWO BODIES              | 1                | 1          | 1          |
| 12  | 12045172       |        | TERMOSTATO DE REFRIGERACIÓN            | COOLING THERMOSTAT                   | 1                | 1          |            |
| 12  | 12045173       |        | TERMOSTATO DE CONGELACIÓN              | FREEZE THERMOSTAT                    |                  |            | 1          |
| 12* | 12045530       |        | SONDA TERMOSTATO                       | THERMOSTAT PROBE                     | 3                | 3          | 3          |
| 13  | 12036331       |        | BISAGRA CABEZA                         | HEAD HINGE                           | 2                | 2          | 2          |
| 14  | 12036724       |        | CERRADURA CABEZA                       | HEAD LOCK                            | 2                | 2          | 2          |
| 15  | 12104754       |        | ADHESIVO CUADRO DE MANDOS              | ADHESIVE DASHBOARD                   | 1                | 1          | 1          |
| 16  | 12036888       |        | MICRO PUERTA                           | MICRO DOOR                           | 2                | 2          | 2          |
| 19  | 12041474       |        | SOPORTE BISAGRA SUPERIOR IZQUIERDO     | TOP LEFT HINGE SUPPORT               | 1                | 1          | 1          |
| 20  | 12036986       |        | SOPORTE BISAGRA INFERIOR IZQUIERDO     | BOTTOM LEFT HINGE SUPPORT            | 1                | 1          | 1          |
| 21  | 12041472       |        | SOPORTE BISAGRA SUPERIOR DERECHO       | TOP RIGHT HINGE BRACKET              | 1                | 1          | 1          |
| 22  | 12037017       |        | SOPORTE BISAGRA INFERIOR DERECHO       | BOTTOM RIGHT HINGE BRACKET           | 1                | 1          | 1          |
| 23  | 12110194       |        | PUERTA ARMARIO CARNICERA IZQUIERDA     | CABINET DOOR LEFT BUTCHER            | 1                |            | 1          |
| 24  | 12110195       |        | PUERTA ARMARIO CARNICERA DERECHA       | RIGHT CABINET DOOR BUTCHER           | 1                |            | 1          |
| 25  | 12034433       |        | BURLETE PUERTA ARMARIO CARNICERA       | GASKET DOOR CABINET BUTCHER          | 2                | 2          | 2          |
| 27  | 12038130       |        | BISAGRA DOBLE MUELLE                   | DOUBLE HINGE SPRING                  | 2                | 2          | 2          |
| 28  | 12033566       |        | PATAS DE ARMARIO                       | FOOT LOCKER                          | 4                | 4          | 4          |
| 29  | 12037936       |        | GUIAS EN U                             | GUIDES U                             | 6                | 6          | 6          |
| 30  | 12037958       |        | PARRILLAS GASTRO                       | GASTRO GRILL                         | 6                | 6          | 6          |
| 31  | 12069731       |        | CREMALLERA INTERIOR CONTRAFRONTI       | INTERIOR ZIPPER CONTRAFRONTI         | 1                | 1          | 1          |
| 32  | 12069732       |        | CREMALLERA INTERIOR RESPALDO           | INTERIOR ZIPPER BACK                 | 1                | 1          | 1          |
| 33  | 12067515       |        | CONDENSADOR ARRANQUE COM. POSITIVO 2C  | CAPACITOR START COM. POSITIVE 2C     | 1                | 1          |            |
| 34  | 12067516       |        | RELÉ ARRANQUE COMP. POSITIVO 2C        | STARTER RELAY COMP. POSITIVE 2C      | 1                | 1          |            |
| 34  | 12088807       |        | BLOQUE ARRANQUE COMP. NEGATIVO 2C      | STARTING BLOCK COMP. NEGATIVE 2C     |                  |            | 1          |
| 35  | 12067609       |        | ILUMINACIÓN INTERIOR 2C                | INTERIOR LIGHTING 2C                 | 2                | 2          |            |
| 38  | 12113925       |        | PUERTA CARNICERA CRISLTAL DERECHA      | RIGHT DOOR BUTCHER CRISLTAL          |                  | 1          |            |
| 39  | 12113926       |        | PUERTA CARNICERA CRISLTAL IZQUIERDA    | LEFT DOOR BUTCHER CRISLTAL           |                  | 1          |            |
| 43  | 12036313       |        | RESISTENCIA SILICONA BANDEJA           | RESISTOR SILICONE TRAY               |                  |            | 1          |
| 44  | 12036014       |        | RESISTENCIA EVAPORADOR                 | RESISTANCE EVAPORADOR                |                  |            | 1          |
| 45  | 12045816       |        | RESISTENCIA MARCO EXTERIOR             | RESISTANCE EXTERIOR FRAME            | 2                | 2          | 2          |
| 47  | 12068586       |        | BURLETE ENVOLVENTE EVAPORADOR          | EVAPORATOR HOUSING GASKET            | 1                | 1          | 1          |
| 48  | 12045174       |        | EVAPORADOR REFERIGERACIÓN              | EVAPORADOR REFERIGERACIÓN            | 1                | 1          |            |
| 48  | 12068190       |        | EVAPORADOR CONGELACIÓN                 | EVAPORATOR FREEZING                  |                  |            | 1          |